

Converting Colors

YIQ(136.5120, 30.6730, 0.2810)

Have a look what the booklet for
YIQ(136.5120, 30.6730, 0.2810)
contains.

YIQ(136.5120, 30.6730, 0.2810)	3
<i>Conversions</i>	4
<i>Details</i>	6
<i>Harmonies</i>	12
<i>Previews</i>	24
<i>Color Blindness Simulation</i>	28
<i>CSS Examples</i>	31

Color

**YIQ(136.5120, 30.6730,
0.2810)**

Conversions

Conversions Part 1

Format	Color
Hex	A68067
RGB	166, 128, 103
RGB Percent	65%, 50%, 40%
CMY	0.3489, 0.4981, 0.5959
CMYK	0.00, 0.23, 0.38, 0.35
HSL	24°, 26%, 53%
HSV	24°, 38%, 65%
XYZ	25.8970, 24.5232, 16.2100
YIQ	136.5120, 30.6730, 0.2810

Conversions

Conversions Part 2

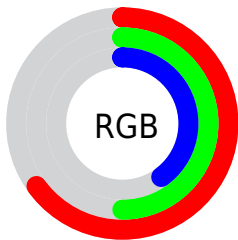
Format	Color
R_{YB}	166, 144, 103
Decimal	10911847
CIE _{Lab}	56.61, 11.18, 19.19
CIE _{LCh}	57, 22.206, 59.769
Yxy	24.5232, 0.3887, 0.3680
Android (android.graphics.Color)	4289101927 (0xFFA68067)
YUV	136.5120, -16.5214, 25.8610
Hunter-Lab	49.5209, 6.6850, 15.2569

Details

The YIQ color $136.5120, 30.6730, 0.2810$ is a dark color, and the websafe version is hex 996666 . A complement of this color would be $132.4880, -30.6730, -0.2810$, and the grayscale version is $137.0000, -0.0000, 0.0000$.

A 20% lighter version of the original color is $190.1810, 33.1030, 0.2950$, and $86.5440, 27.6470, 0.0550$ is the 20% darker color. If you saturate the color by 10%, you get $128.7040, 38.8800, 0.2240$, and if you desaturate by 10%, it is $144.3200, 22.4660, 0.3380$.

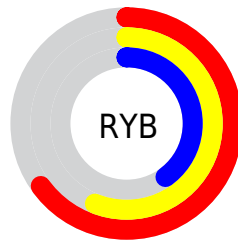
Distribution



Red (65%)

Green (50%)

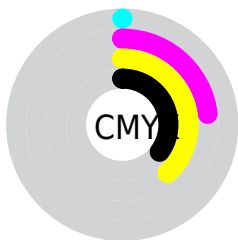
Blue (40%)



Red (65%)

Yellow (56%)

Blue (40%)

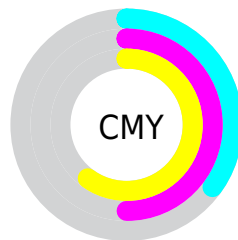


Cyan (0%)

Magenta (23%)

Yellow (38%)

Black (35%)



Cyan (35%)


Magenta (50%)


Yellow (60%)

Brightness & Saturation Gradients


These gradients show how the YIQ color 136.5120, 30.6730, 0.2810 changes by changing the brightness by 10 percent. The first figure shows a shift by +10% for each color and the second figure -10%.


Similar to the brightness gradients but the following saturation gradients show a change of the YIQ color 136.5120, 30.6730, 0.2810 by changing the saturation by 10% instead.


 136.5120, 30.6730,
0.2810


 136.5120, 30.6730,
0.2810


255.0000, -0.0000,
-0.0000


 111.0280, 29.1600,
0.1680


 190.1810, 33.1030,
0.2950


 86.5440, 27.6470,
0.0550


 217.7790, 34.2950,
0.7190

 62.7610, 25.5380,
-0.2700

 239.1900, 19.7160,
-4.8920

 39.9780, 23.4290,
-0.5950

 252.9480, 5.7780,
-5.5980

 19.8790, 19.3940,
0.9460

 0.0000, 0.0000,
0.0000

■ 136.5120, 30.6730,
0.2810

■ 136.5120, 30.6730,
0.2810

■ 128.7040, 38.8800,
0.2240

■ 144.3200, 22.4660,
0.3380

■ 121.0100, 46.7660,
0.4780

■ 152.0140, 14.5800,
0.0840

■ 113.2020, 54.9730,
0.4210

■ 159.8220, 6.3730,
0.1410

■ 105.5080, 62.8590,
0.6750

■ 167.5160, -1.5130,
-0.1130

■ 97.7000, 71.0660,
0.6180

■ 175.3240, -9.7200,
-0.0560

■ 89.8920, 79.2730,
0.5610

■ 183.1320,
-17.9270, 0.0010

■ 88.3760, 80.7860,
0.6740

■ 190.8260,
-25.8130, -0.2530

■ 198.6340,

-34.0200, -0.1960

■ 206.3280,
-41.9060, -0.4500

Harmonies

Analogous

The Analogous color harmony consists of three colors that are next to each other on the color wheel.



137.6790, 32.0010, 9.2570



136.5120, 30.6730, 0.2810



134.5660, 21.4130, -8.1150

Triad

The Triadic color harmony groups three colors that are evenly spaced from another and form a triangle on the color wheel.



136.5120, 30.6730, 0.2810



127.6920, -31.9080, -16.4520



137.7240, -7.4300, 13.5140

Complementary

The Complementary color scheme is a pair of colors which are on the opposite of each other on the color wheel.



136.5120, 30.6730, 0.2810



132.4880, -30.6730, -0.2810

Split Complementary

Split-complementary colors differ from the complementary color scheme. The scheme consists of three colors, the original color and two neighbors of the complement color.



134.0310, -27.6480, 5.4720



136.5120, 30.6730, 0.2810



126.5800, -43.0960, -11.9280

Square

The Square scheme is like the rectangle color scheme, but the four colors are evenly spaced on the color wheel.



136.5120, 30.6730, 0.2810



130.3320, -13.3390, -17.0750



129.2200, -41.7220, -3.7860



138.9990, 10.9090, 17.0610

Rectangle

The Rectangle color scheme consists of four colors that form a rectangle on the color wheel.



136.5120, 30.6730, 0.2810



133.8420, 11.6480, -12.8640



129.2200, -41.7220, -3.7860



136.5490, -14.3070, 11.4930

Sweetspot

The Sweet Spot groups the original color and five complimentary colors.



136.5120, 30.6730, 0.2810



205.4590, 11.8290, 0.3810



126.2830, 25.0290, 25.4850



103.0070, 7.2900, 0.0420



237.0000, -0.0000, -0.0000



110.0000, 0.0000, 0.0000

Same Dimension

The Same Dimension uses a secret algorithm to generate beautiful new colors.



136.5120, 30.6730, 0.2810



170.3800, 48.6000, 0.2800



154.7090, 22.1480, -15.9320



80.1530, 3.9430, 0.1270



78.8850, 71.9830, 0.5190



10.6760, 9.7200, 0.0560

Inverse Universe

The Inverse Universe completely reimagines the original color for something new.



132.4880, -30.6730, -0.2810



163.6200, -48.6000, -0.2800



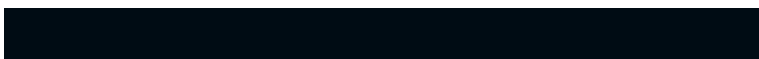
114.2910, -22.1480, 15.9320



79.8470, -3.9430, -0.1270



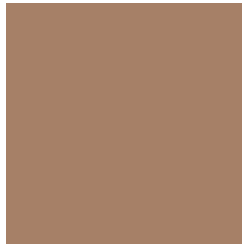
69.1150, -71.9830, -0.5190



9.3240, -9.7200, -0.0560

Previews

White Background



This preview shows how the YIQ color 136.5120, 30.6730, 0.2810 looks on a white background.

Color Contrast Check

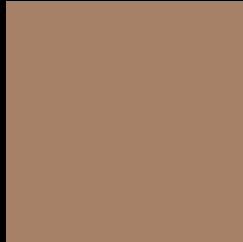
Large Text (above 18pt) WCAG AA ✓ Pass

Any Text WCAG AA × Fail

Large Text (above 18pt) WCAG AAA × Fail

Any Text WCAG AAA × Fail

Black Background



This preview shows how the YIQ color 136.5120, 30.6730, 0.2810 looks on a black background.

Color Contrast Check

Large Text (above 18pt) WCAG AA ✓ Pass

Any Text WCAG AA ✓ Pass

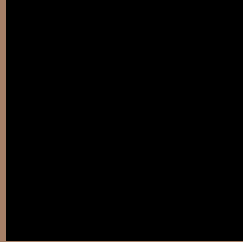
Large Text (above 18pt) WCAG AAA ✓ Pass

Any Text WCAG AAA × Fail

If you want to check with other color combinations, try the [Color Contrast Checker](#).

YIQ 136.5120, 30.6730, 0.2810

Background



This preview shows how black text looks on a background with the YIQ color 136.5120, 30.6730, 0.2810.



This preview shows how white text looks on a background with the YIQ color 136.5120, 30.6730,

0.2810.

Color Blindness Simulation

Color vision deficiency is a very complex topic, and I could not describe the different causes any better than Wikipedia does, so if you want to learn more, you should check out their [article about color blindness](#).

Dichromacy



Original Color

136.5120, 30.6730, 0.2810

Protanopia

135.3850, 14.6730, -7.1110

Deuteranopia

135.8920, 26.5470, -2.0370



Tritanopia

138.4810, 23.9310, 12.3390

Trichromacy



Original Color

136.5120, 30.6730, 0.2810

Protanomaly

135.9020, 20.5870, -4.1570

Deuteranomaly

135.9030, 28.0140, -1.0900

Tritanomaly

137.5150, 26.5910, 8.1830

Monochromacy



Original Color

136.5120, 30.6730, 0.2810

Achromatopsia

137.0000, -0.0000, 0.0000

Achromatomaly

137.1600, 11.2330, 0.1690

CSS Examples

Text

The CSS property to change the color of the text to YIQ 136.5120, 30.6730, 0.2810 is called "color". The color property can be set on classes, ids or directly on the HTML element.

This example shows how text in the color `rgb(166, 128, 103)` looks like.

```
.text, #text, p{  
    color:rgb(166, 128, 103)  
}
```

If you want to add a text shadow in that color use the text-shadow property, you can generate a text shadow directly with our [CSS Text Shadow Generator](#).

Here you see how black text with a 4 pixel rgb(166, 128, 103) colored shadow looks like.

```
.shadow{ text-shadow: 4px 4px 2px rgb(166, 128, 103) }
```

Border

The CSS property to change the border of an element to YIQ 136.5120, 30.6730, 0.2810 is called "border". The border property can be set on classes, ids or directly on the HTML element.

This example shows the color as border, it can be applied via the CSS property "border" or "border-color".

```
.border, #border, table{ border:4px solid rgb(166, 128, 103) }
```


If only the border color should be changed use the property `border-color`.

```
.border{ border-color:rgb(166, 128, 103) }
```

If you want to add a box shadow in that color use:

Here you see how a box with a 4 pixel `rgb(166, 128, 103)` colored shadow looks like.

```
.boxshadow{ -moz-box-shadow:4px 4px 4px  
4px rgb(166, 128, 103); -webkit-box-  
shadow:4px 4px 4px 4px rgb(166, 128, 103);  
box-shadow:4px 4px 4px 4px rgb(166, 128,  
103) }
```

Background

The CSS property to change the background color of an element to YIQ 136.5120, 30.6730, 0.2810 is called "background". The background property can be set on classes, ids or directly on the HTML element.

```
.background, #background, body{  
background: rgb(166, 128, 103) }
```

If only the background color should be changed can be used:

```
.background{ background-color: rgb(166,  
128, 103) }
```

This example shows the color as background, it is applied via the CSS property "background".

To optimize and compress your CSS code, you can use our [online CSS compressor and optimizer](#) based on csstidy. If you want to create a linear or radial gradient as background or border, check our [CSS Gradient Generator](#).

Hey! You found this booklet interesting? Support Converting Colors with the new Membership Option!

The pro membership hides all ads, plus gives you double the colors in the color bucket, and more awesome pro features!

[Learn more, Memberships starting at \\$2.50/m!](#)

**Follow me
on Twitter!**

@ConvertingColor