

Converting Colors

YIQ(136.7660, 44.3370, -5.0630)

Have a look what the booklet for
YIQ(136.7660, 44.3370, -5.0630)
contains.

| | |
|--|----|
| YIQ(136.7660, 44.3370, -5.0630) | 3 |
| <i>Conversions</i> | 4 |
| <i>Details</i> | 6 |
| <i>Harmonies</i> | 12 |
| <i>Previews</i> | 24 |
| <i>Color Blindness Simulation</i> | 28 |
| <i>CSS Examples</i> | 31 |

Color

**YIQ(136.7660, 44.3370,
-5.0630)**

Conversions

Conversions Part 1

| Format | Color |
|---------------|----------------------------|
| Hex | B0804F |
| RGB | 176, 128, 79 |
| RGB Percent | 69%, 50%, 31% |
| CMY | 0.3097, 0.4981, 0.6900 |
| CMYK | 0.00, 0.27, 0.55, 0.31 |
| HSL | 30°, 38%, 50% |
| HSV | 30°, 55%, 69% |
| XYZ | 27.0391, 25.2309, 10.8525 |
| YIQ | 136.7660, 44.3370, -5.0630 |

Conversions

Conversions Part 2

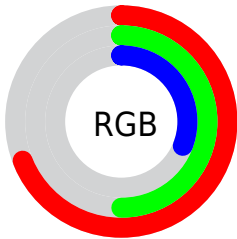
| Format | Color |
|-------------------------------------|--------------------------------|
| RYB | 174, 176, 79 |
| Decimal | 11567183 |
| CIELab | 57.30, 12.90, 33.65 |
| CIElCh | 57, 36.035, 69.032 |
| Yxy | 25.2309, 0.4284, 0.3997 |
| Android (android.graphics.Color) | 4289757263 (0xFFB0804F) |
| YUV | 136.7660, -28.4786, 34.4082 |
| Hunter-Lab | 50.2304, 8.1836, 22.3514 |

Details

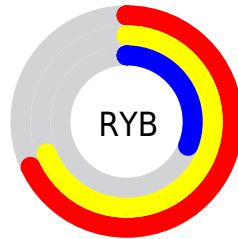
The YIQ color $136.7660, 44.3370, -5.0630$ is a dark color, and the websafe version is hex $CC9966$. A complement of this color would be $118.2340, -44.3370, 5.0630$, and the grayscale version is $137.0000, -0.0000, 0.0000$.

A 20% lighter version of the original color is $190.9190, 48.2800, -4.9360$, and $85.9010, 39.5230, -5.9250$ is the 20% darker color. If you saturate the color by 10%, you get $129.4310, 52.5900, -5.9540$, and if you desaturate by 10%, it is $144.1010, 36.0840, -4.1720$.

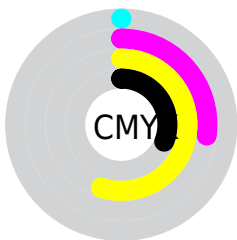
Distribution



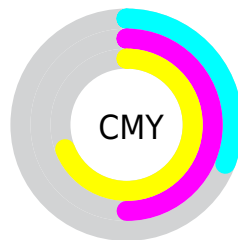
- Red (69%)
- Green (50%)
- Blue (31%)



- Red (68%)
- Yellow (69%)
- Blue (31%)



- Cyan (0%)
- Magenta (27%)
- Yellow (55%)
- Black (31%)



- Cyan (31%)
- Magenta (50%)
- Yellow (69%)

Brightness & Saturation Gradients

These gradients show how the YIQ color 136.7660, 44.3370, -5.0630 changes by changing the brightness by 10 percent. The first figure shows a shift by +10% for each color and the second figure -10%.

Similar to the brightness gradients but the following saturation gradients show a change of the YIQ color 136.7660, 44.3370, -5.0630 by changing the saturation by 10% instead.

■ 136.7660, 44.3370,
-5.0630

■ 136.7660, 44.3370,
-5.0630

■ 255.0000, -0.0000,
-0.0000

■ 110.9830, 42.2280,
-5.3880

■ 190.9190, 48.2800,
-4.9360

■ 85.9010, 39.5230,
-5.9250

■ 216.1250, 44.7040,
-6.2080

■ 62.0040, 37.7350,
-6.5610

■ 236.2260, 28.0620,
-12.9780

■ 40.2900, 31.1780,
-3.3660

■ 249.8700, 14.4450,
-13.9950

■ 20.7760, 21.1820,
1.5820

■ 253.1760, 5.1360,
-4.9760

■ 0.8970, 1.7880,
0.6360

■ 0.0000, 0.0000,

0.0000

■ 136.7660, 44.3370,
-5.0630

■ 136.7660, 44.3370,
-5.0630

■ 129.4310, 52.5900,
-5.9540

■ 144.1010, 36.0840,
-4.1720

■ 122.7970, 60.2470,
-7.0570

■ 150.7350, 28.4270,
-3.0690

■ 115.4620, 68.5000,
-7.9480

■ 158.0700, 20.1740,
-2.1780

■ 108.2410, 76.4320,
-8.5280

■ 165.2910, 12.2420,
-1.5980

■ 104.8670, 80.4210,
-9.2350

■ 172.6260, 3.9890,
-0.7070

■ 179.3740, -3.9890,
0.7070

■ 186.5950,
-11.9210, 1.2870

■ 193.9300,
-20.1740, 2.1780

■ 200.5640,
-27.8310, 3.2810

Harmonies

Analogous

The Analogous color harmony consists of three colors that are next to each other on the color wheel.



138.6720, 51.0740, 10.5140



136.7660, 44.3370, -5.0630



134.2810, 26.2290, -18.3070

Triad

The Triadic color harmony groups three colors that are evenly spaced from another and form a triangle on the color wheel.



136.7660, 44.3370, -5.0630



107.0420, -89.2160, -35.1360



141.0270, -3.4890, 24.6950

Complementary

The Complementary color scheme is a pair of colors which are on the opposite of each other on the color wheel.



136.7660, 44.3370, -5.0630



118.2340, -44.3370, 5.0630

Split Complementary

Split-complementary colors differ from the complementary color scheme. The scheme consists of three colors, the original color and two neighbors of the complement color.



135.3860, -38.6530, 12.1870



136.7660, 44.3370, -5.0630



109.2880, -98.2960, -24.7600

Square

The Square scheme is like the rectangle color scheme, but the four colors are evenly spaced on the color wheel.



136.7660, 44.3370, -5.0630



124.0470, -34.8860, -28.5660



120.2940, -80.0970, -7.6570



141.4620, 26.0830, 28.4110

Rectangle

The Rectangle color scheme consists of four colors that form a rectangle on the color wheel.



136.7660, 44.3370, -5.0630



132.0230, 9.2200, -23.9320



120.2940, -80.0970, -7.6570



139.8730, -14.8590, 21.5010

Sweetspot

The Sweet Spot groups the original color and five complimentary colors.



136.7660, 44.3370, -5.0630



213.7000, 18.3400, -1.9800



113.5890, 42.0830, 35.8030



105.3340, 10.6830, -0.8770



242.0000, -0.0000, 0.0000



115.0000, -0.0000, 0.0000

Same Dimension

The Same Dimension uses a secret algorithm to generate beautiful new colors.



136.7660, 44.3370, -5.0630



168.0600, 69.6920, -7.5240



164.9420, 31.1370, -30.1670



85.6260, 3.9890, -0.7070



90.9460, 70.0130, -7.8350



15.4050, 11.9210, -1.2870

Inverse Universe

The Inverse Universe completely reimagines the original color for something new.



118.2340, -44.3370, 5.0630



139.3530, -69.4170, 8.0470



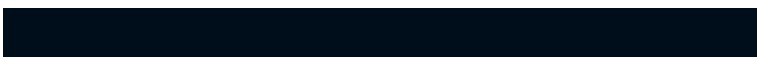
90.0580, -31.1370, 30.1670



83.9610, -4.2640, 0.1840



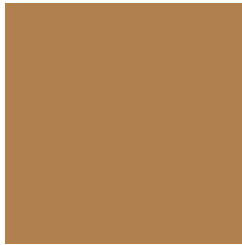
62.0540, -70.0130, 7.8350



10.5950, -11.9210, 1.2870

Previews

White Background



This preview shows how the YIQ color 136.7660, 44.3370, -5.0630 looks on a white background.

Color Contrast Check

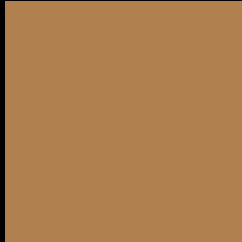
Large Text (above 18pt) WCAG AA ✓ Pass

Any Text WCAG AA × Fail

Large Text (above 18pt) WCAG AAA × Fail

Any Text WCAG AAA × Fail

Black Background



This preview shows how the YIQ color 136.7660, 44.3370, -5.0630 looks on a black background.

Color Contrast Check

Large Text (above 18pt) WCAG AA ✓ Pass

Any Text WCAG AA ✓ Pass

Large Text (above 18pt) WCAG AAA ✓ Pass

Any Text WCAG AAA × Fail

If you want to check with other color combinations, try the [Color Contrast Checker](#).

YIQ 136.7660, 44.3370, -5.0630

Background



This preview shows how black text looks on a background with the YIQ color 136.7660, 44.3370, -5.0630.



This preview shows how white text looks on a background with the YIQ color 136.7660, 44.3370, -5.0630.

-5.0630.

Color Blindness Simulation

Color vision deficiency is a very complex topic, and I could not describe the different causes any better than Wikipedia does, so if you want to learn more, you should check out their [article about color blindness](#).

Dichromacy



Original Color

136.7660, 44.3370, -5.0630

Protanopia

135.6170, 25.4030, -14.3490

Deuteranopia

136.6080, 38.7900, -9.1620



Tritanopia

140.3680, 31.6790, 15.0950

Trichromacy



Original Color

136.7660, 44.3370, -5.0630

Protanomaly

135.8460, 32.1880, -10.6600

Deuteranomaly

136.9180, 40.8530, -8.0030

Tritanomaly

139.0770, 36.6320, 7.9280

Monochromacy



Original Color

136.7660, 44.3370, -5.0630

Achromatopsia

137.0000, -0.0000, 0.0000

Achromatomaly

137.0310, 15.9100, -1.9940

CSS Examples

Text

The CSS property to change the color of the text to YIQ 136.7660, 44.3370, -5.0630 is called "color". The color property can be set on classes, ids or directly on the HTML element.

This example shows how text in the color `rgb(176, 128, 79)` looks like.

```
.text, #text, p{  
    color:rgb(176, 128, 79)  
}
```

If you want to add a text shadow in that color use the text-shadow property, you can generate a text shadow directly with our [CSS Text Shadow Generator](#).

Here you see how black text with a 4 pixel rgb(176, 128, 79) colored shadow looks like.

```
.shadow{ text-shadow: 4px 4px 2px rgb(176, 128, 79) }
```

Border

The CSS property to change the border of an element to YIQ 136.7660, 44.3370, -5.0630 is called "border". The border property can be set on classes, ids or directly on the HTML element.

This example shows the color as border, it can be applied via the CSS property "border" or "border-color".

```
.border, #border, table{ border:4px solid rgb(176, 128, 79) }
```


If only the border color should be changed use the property `border-color`.

```
.border{ border-color:rgb(176, 128, 79) }
```

If you want to add a box shadow in that color use:

Here you see how a box with a 4 pixel `rgb(176, 128, 79)` colored shadow looks like.

```
.boxshadow{ -moz-box-shadow:4px 4px 4px  
4px rgb(176, 128, 79); -webkit-box-  
shadow:4px 4px 4px 4px rgb(176, 128, 79);  
box-shadow:4px 4px 4px 4px rgb(176, 128,  
79) }
```

Background

The CSS property to change the background color of an element to YIQ 136.7660, 44.3370, -5.0630 is called "background". The background property can be set on classes, ids or directly on the HTML element.

```
.background, #background, body{  
background: rgb(176, 128, 79) }
```

If only the background color should be changed can be used:

```
.background{ background-color: rgb(176,  
128, 79) }
```

This example shows the color as background, it is applied via the CSS property "background".

To optimize and compress your CSS code, you can use our [online CSS compressor and optimizer](#) based on csstidy. If you want to create a linear or radial gradient as background or border, check our [CSS Gradient Generator](#).

Hey! You found this booklet interesting? Support Converting Colors with the new Membership Option!

The pro membership hides all ads, plus gives you double the colors in the color bucket, and more awesome pro features!

[Learn more, Memberships starting at \\$2.50/m!](#)

**Follow me
on Twitter!**

@ConvertingColor