

Converting Colors

YIQ(137.2510, 72.7540, 47.1380)

Have a look what the booklet for
YIQ(137.2510, 72.7540, 47.1380)
contains.

YIQ(137.2510, 72.7540, 47.1380)	3
<i>Conversions</i>	4
<i>Details</i>	6
<i>Harmonies</i>	12
<i>Previews</i>	24
<i>Color Blindness Simulation</i>	28
<i>CSS Examples</i>	31

Color

**YIQ(137.2510, 72.7540,
47.1380)**

Conversions

Conversions Part 1

Format	Color
Hex	EC5789
RGB	236, 87, 137
RGB Percent	93%, 34%, 54%
CMY	0.0741, 0.6590, 0.4625
CMYK	0.00, 0.63, 0.42, 0.07
HSL	340°, 80%, 63%
HSV	340°, 63%, 93%
XYZ	42.5478, 26.4640, 26.5564
YIQ	137.2510, 72.7540, 47.1380

Conversions

Conversions Part 2

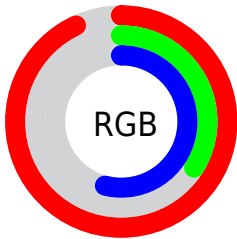
Format	Color
R_{YB}	236, 87, 137
Decimal	15488905
CIE _{Lab}	58.47, 61.47, 3.45
CIE _{LCh}	58, 61.571, 3.209
Yxy	26.4640, 0.4452, 0.2769
Android (android.graphics.Color)	4293678985 (0xFFEC5789)
YUV	137.2510, -0.1237, 86.6029
Hunter-Lab	51.4431, 57.6091, 5.4030

Details

The YIQ color **137.2510, 72.7540, 47.1380** is a light color, and the websafe version is hex **FF6699**. The color can be described as light muted rose. A complement of this color would be **185.7490, -72.7540, -47.1380**, and the grayscale version is **137.0000, -0.0000, 0.0000**.

A 20% lighter version of the original color is **182.4330, 51.3900, 37.8380**, and **73.9830, 70.8730, 53.6970** is the 20% darker color. If you saturate the color by 10%, you get **121.3390, 84.4900, 54.7140**, and if you desaturate by 10%, it is **153.1630, 61.0180, 39.5620**.

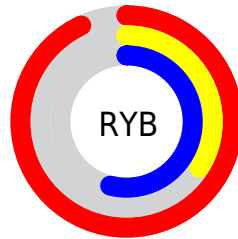
Distribution



Red (93%)

Green (34%)

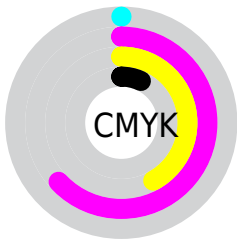
Blue (54%)



Red (93%)

Yellow (34%)

Blue (54%)

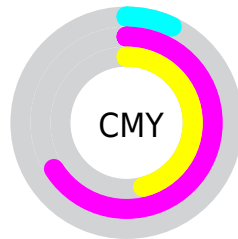


Cyan (0%)

Magenta (63%)

Yellow (42%)

Black (7%)



Cyan (7%)

Magenta (66%)

Yellow (46%)

Brightness & Saturation Gradients

These gradients show how the YIQ color 137.2510, 72.7540, 47.1380 changes by changing the brightness by 10 percent. The first figure shows a shift by +10% for each color and the second figure -10%.

Similar to the brightness gradients but the following saturation gradients show a change of the YIQ color 137.2510, 72.7540, 47.1380 by changing the saturation by 10% instead.

■ 137.2510, 72.7540,
47.1380

■ 137.2510, 72.7540,
47.1380

■ 255.0000, -0.0000,
-0.0000

■ 107.8210, 71.1490,
48.6930

■ 182.4330, 51.3900,
37.8380

■ 73.9830, 70.8730,
53.6970

■ 202.0610, 34.7020,
31.9020

■ 50.9500, 66.4720,
50.8560

■ 222.2760, 17.7390,
25.4430

■ 39.5860, 55.3330,
37.9650

■ 240.9120, 6.6000,
12.5520

■ 28.6350, 44.4690,
25.5970

■ 18.5810, 35.3930,
13.8650

■ 7.2900, 13.9830,

5.3990

■ 0.0000, 0.0000,
0.0000

■ 137.2510, 72.7540,
47.1380

■ 137.2510, 72.7540,
47.1380

■ 121.3390, 84.4900,
54.7140

■ 153.1630, 61.0180,
39.5620

■ 106.1280, 95.6300,
62.0780

■ 168.3740, 49.8780,
32.1980

■ 90.2160, 107.3660,
69.6540

■ 184.2860, 38.1420,
24.6220

■ 79.5700, 115.2970,
74.6010

■ 199.6110, 26.6810,
17.5690

■ 215.4090, 15.2660,
9.6820

■ 231.3210, 3.5300,
2.1060

■ 246.6460, -7.9310,
-4.9470

■ 249.3190,
-11.3240, -4.0280

Harmonies

Analogous

The Analogous color harmony consists of three colors that are next to each other on the color wheel.



143.1500, 36.6700, 51.3100



137.2510, 72.7540, 47.1380



135.9970, 84.3120, 24.8880

Triad

The Triadic color harmony groups three colors that are evenly spaced from another and form a triangle on the color wheel.



137.2510, 72.7540, 47.1380



126.9510, 8.5820, -45.4180



120.3510, -119.8020, -9.4500

Complementary

The Complementary color scheme is a pair of colors which are on the opposite of each other on the color wheel.



137.2510, 72.7540, 47.1380



185.7490, -72.7540, -47.1380

Split Complementary

Split-complementary colors differ from the complementary color scheme. The scheme consists of three colors, the original color and two neighbors of the complement color.



119.4270, -108.9330, -24.7170



137.2510, 72.7540, 47.1380



105.2400, -73.1190, -57.0470

Square

The Square scheme is like the rectangle color scheme, but the four colors are evenly spaced on the color wheel.



137.2510, 72.7540, 47.1380



131.6440, 55.1630, -36.0770



113.9720, -92.1950, -41.7230



113.5010, -119.8040, 1.6040

Rectangle

The Rectangle color scheme consists of four colors that form a rectangle on the color wheel.



137.2510, 72.7540, 47.1380



136.4840, 80.6020, 4.0100



113.9720, -92.1950, -41.7230



120.8580, -117.0960, -14.4400

Sweetspot

The Sweet Spot groups the original color and five complimentary colors.



137.2510, 72.7540, 47.1380



223.1760, 23.4720, 15.1520



132.9890, 9.9830, 66.9030



108.1100, 14.6700, 9.4700



0.0000, 0.0000, 0.0000



128.0000, -0.0000, -0.0000

Same Dimension

The Same Dimension uses a secret algorithm to generate beautiful new colors.



137.2510, 72.7540, 47.1380



126.4160, 94.7590, 61.3430



144.4650, 82.7540, 20.0820



109.7450, 5.2720, 3.5760



61.0730, 88.2950, 57.3430



18.1980, 26.4060, 17.0460

Inverse Universe

The Inverse Universe completely reimagines the original color for something new.



137.2510, 72.7540, 47.1380



126.4160, 94.7590, 61.3430



178.5350, -82.7540, -20.0820



109.7450, 5.2720, 3.5760



61.0730, 88.2950, 57.3430



18.1980, 26.4060, 17.0460

Previews

White Background



This preview shows how the YIQ color 137.2510, 72.7540, 47.1380 looks on a white background.

Color Contrast Check

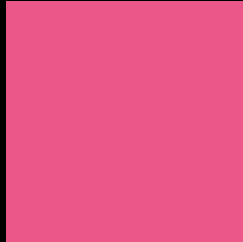
Large Text (above 18pt) WCAG AA ✓ Pass

Any Text WCAG AA × Fail

Large Text (above 18pt) WCAG AAA × Fail

Any Text WCAG AAA × Fail

Black Background



This preview shows how the YIQ color 137.2510, 72.7540, 47.1380 looks on a black background.

Color Contrast Check

Large Text (above 18pt) WCAG AA ✓ Pass

Any Text WCAG AA ✓ Pass

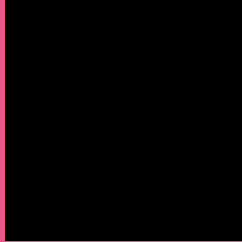
Large Text (above 18pt) WCAG AAA ✓ Pass

Any Text WCAG AAA × Fail

If you want to check with other color combinations, try the [Color Contrast Checker](#).

YIQ 137.2510, 72.7540, 47.1380

Background



This preview shows how black text looks on a background with the YIQ color 137.2510, 72.7540, 47.1380.



This preview shows how white text looks on a background with the YIQ color 137.2510, 72.7540,

47.1380.

Color Blindness Simulation

Color vision deficiency is a very complex topic, and I could not describe the different causes any better than Wikipedia does, so if you want to learn more, you should check out their [article about color blindness](#).

Dichromacy



Original Color

137.2510, 72.7540, 47.1380

Protanopia

141.6970, -11.9680, 7.6480

Deuteranopia

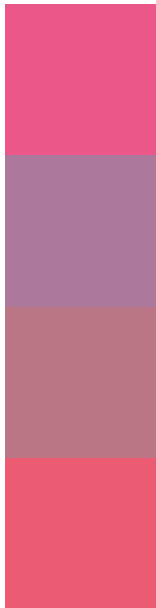
142.1930, 15.6340, 3.0100



Tritanopia

137.2450, 80.9180, 31.3340

Trichromacy



Original Color

137.2510, 72.7540, 47.1380

Protanomaly

140.3530, 18.8400, 22.0080

Deuteranomaly

140.3410, 36.3090, 19.2930

Tritanomaly

137.2650, 78.1660, 37.1580

Monochromacy



Original Color

137.2510, 72.7540, 47.1380

Achromatopsia

137.0000, -0.0000, 0.0000

Achromatomaly

137.1980, 26.4060, 17.0460

CSS Examples

Text

The CSS property to change the color of the text to YIQ 137.2510, 72.7540, 47.1380 is called "color". The color property can be set on classes, ids or directly on the HTML element.

This example shows how text in the color `rgb(236, 87, 137)` looks like.

```
.text, #text, p{  
    color:rgb(236, 87, 137)  
}
```

If you want to add a text shadow in that color use the text-shadow property, you can generate a text shadow directly with our [CSS Text Shadow Generator](#).

Here you see how black text with a 4 pixel rgb(236, 87, 137) colored shadow looks like.

```
.shadow{ text-shadow: 4px 4px 2px rgb(236, 87, 137) }
```

Border

The CSS property to change the border of an element to YIQ 137.2510, 72.7540, 47.1380 is called "border". The border property can be set on classes, ids or directly on the HTML element.

This example shows the color as border, it can be applied via the CSS property "border" or "border-color".

```
.border, #border, table{ border:4px solid rgb(236, 87, 137) }
```


If only the border color should be changed use the property border-color.

```
.border{ border-color:rgb(236, 87, 137) }
```

If you want to add a box shadow in that color use:

Here you see how a box with a 4 pixel rgb(236, 87, 137) colored shadow looks like.

```
.boxshadow{ -moz-box-shadow:4px 4px 4px  
4px rgb(236, 87, 137); -webkit-box-  
shadow:4px 4px 4px 4px rgb(236, 87, 137);  
box-shadow:4px 4px 4px 4px rgb(236, 87,  
137) }
```

Background

The CSS property to change the background color of an element to YIQ 137.2510, 72.7540, 47.1380 is called "background". The background property can be set on classes, ids or directly on the HTML element.

```
.background, #background, body{  
background: rgb(236, 87, 137) }
```

If only the background color should be changed can be used:

```
.background{ background-color: rgb(236, 87,  
137) }
```

This example shows the color as background, it is applied via the CSS property "background".

To optimize and compress your CSS code, you can use our [online CSS compressor and optimizer](#) based on csstidy. If you want to create a linear or radial gradient as background or border, check our [CSS Gradient Generator](#).

Hey! You found this booklet interesting? Support Converting Colors with the new Membership Option!

The pro membership hides all ads, plus gives you double the colors in the color bucket, and more awesome pro features!

[Learn more, Memberships starting at \\$2.50/m!](#)

**Follow me
on Twitter!**

@ConvertingColor