

Converting Colors

YIQ(137.3050, 26.8220, -1.5140)

Have a look what the booklet for
YIQ(137.3050, 26.8220, -1.5140)
contains.

YIQ(137.3050, 26.8220, -1.5140)	3
<i>Conversions</i>	4
<i>Details</i>	6
<i>Harmonies</i>	12
<i>Previews</i>	24
<i>Color Blindness Simulation</i>	28
<i>CSS Examples</i>	31

Color

**YIQ(137.3050, 26.8220,
-1.5140)**

Conversions

Conversions Part 1

Format	Color
Hex	A28369
RGB	162, 131, 105
RGB Percent	64%, 51%, 41%
CMY	0.3646, 0.4863, 0.5881
CMYK	0.00, 0.19, 0.35, 0.36
HSL	27°, 23%, 52%
HSV	27°, 35%, 64%
XYZ	25.5693, 24.9326, 16.8381
YIQ	137.3050, 26.8220, -1.5140

Conversions

Conversions Part 2

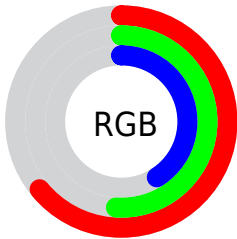
Format	Color
R_{YB}	162, 153, 105
Decimal	10650473
CIE _{Lab}	57.01, 8.08, 18.53
CIE _{LCh}	57, 20.211, 66.448
Yxy	24.9326, 0.3797, 0.3702
Android (android.graphics.Color)	4288840553 (0xFFA28369)
YUV	137.3050, -15.9264, 21.6575
Hunter-Lab	49.9325, 4.0237, 14.9592

Details

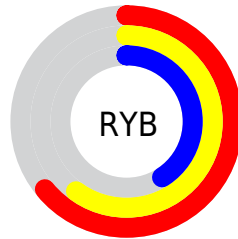
The YIQ color $137.3050, 26.8220, -1.5140$ is a dark color, and the websafe version is hex 996666 . A complement of this color would be $129.6950, -26.8220, 1.5140$, and the grayscale version is $137.0000, -0.0000, 0.0000$.

A 20% lighter version of the original color is $190.9740, 29.2520, -1.5000$, and $87.3370, 23.7960, -1.7400$ is the 20% darker color. If you saturate the color by 10%, you get $130.1980, 34.4330, -1.7830$, and if you desaturate by 10%, it is $144.4120, 19.2110, -1.2450$.

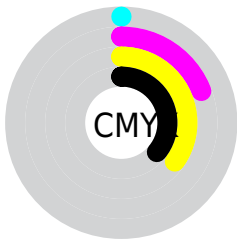
Distribution



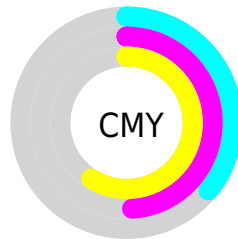
- Red (64%)
- Green (51%)
- Blue (41%)



- Red (64%)
- Yellow (60%)
- Blue (41%)



- Cyan (0%)
- Magenta (19%)
- Yellow (35%)
- Black (36%)



- Cyan (36%)
- Magenta (49%)
- Yellow (59%)

Brightness & Saturation Gradients

These gradients show how the YIQ color 137.3050, 26.8220, -1.5140 changes by changing the brightness by 10 percent. The first figure shows a shift by +10% for each color and the second figure -10%.

Similar to the brightness gradients but the following saturation gradients show a change of the YIQ color 137.3050, 26.8220, -1.5140 by changing the saturation by 10% instead.

■ 137.3050, 26.8220,
-1.5140

■ 137.3050, 26.8220,
-1.5140

■ 255.0000, -0.0000,
-0.0000

■ 111.8210, 25.3090,
-1.6270

■ 190.9740, 29.2520,
-1.5000

■ 87.3370, 23.7960,
-1.7400

■ 219.1590, 30.1690,
-1.5990

■ 63.8530, 22.2830,
-1.8530

■ 241.1790, 18.2490,
-5.8390

■ 41.3690, 20.7700,
-1.9660

■ 253.1760, 5.1360,
-4.9760

■ 21.0420, 17.3770,
-1.0470

■ 0.0000, 0.0000,
0.0000

■ 137.3050, 26.8220,
-1.5140

■ 137.3050, 26.8220,
-1.5140

■ 130.1980, 34.4330,
-1.7830

■ 144.4120, 19.2110,
-1.2450

■ 123.0910, 42.0440,
-2.0520

■ 151.5190, 11.6000,
-0.9760

■ 116.4570, 49.7010,
-3.1550

■ 158.1530, 3.9430,
0.1270

■ 109.3500, 57.3120,
-3.4240

■ 165.2600, -3.6680,
0.3960

■ 102.2430, 64.9230,
-3.6930

■ 172.3670,
-11.2790, 0.6650

■ 95.1360, 72.5340,
-3.9620

■ 179.4740,
-18.8900, 0.9340

■ 91.8760, 76.2020,
-4.3580

■ 186.5810,
-26.5010, 1.2030

■ 193.8020,

-34.4330, 1.7830

■ 200.3220,
-41.7690, 2.5750

Harmonies

Analogous

The Analogous color harmony consists of three colors that are next to each other on the color wheel.



138.4290, 29.7090, 6.7410



137.3050, 26.8220, -1.5140



135.7010, 16.5990, -8.9770

Triad

The Triadic color harmony groups three colors that are evenly spaced from another and form a triangle on the color wheel.



137.3050, 26.8220, -1.5140



129.4580, -31.1290, -14.0490



139.0620, -2.5700, 13.5420

Complementary

The Complementary color scheme is a pair of colors which are on the opposite of each other on the color wheel.



137.3050, 26.8220, -1.5140



129.6950, -26.8220, 1.5140

Split Complementary

Split-complementary colors differ from the complementary color scheme. The scheme consists of three colors, the original color and two neighbors of the complement color.



136.2060, -20.7710, 7.4930



137.3050, 26.8220, -1.5140



129.3140, -39.2910, -9.2990

Square

The Square scheme is like the rectangle color scheme, but the four colors are evenly spaced on the color wheel.



137.3050, 26.8220, -1.5140



131.6030, -15.5400, -15.7320



131.9220, -34.8910, -0.9310



139.9130, 14.0270, 15.6190

Rectangle

The Rectangle color scheme consists of four colors that form a rectangle on the color wheel.



137.3050, 26.8220, -1.5140



133.9170, 7.0630, -12.3690



131.9220, -34.8910, -0.9310



138.1860, -8.8510, 11.7330

Sweetspot

The Sweet Spot groups the original color and five complimentary colors.



137.3050, 26.8220, -1.5140



201.6330, 11.2790, -0.6650



125.5770, 24.0210, 21.7250



101.2950, 6.4190, -0.6930



235.0000, 0.0000, -0.0000



107.0000, -0.0000, 0.0000

Same Dimension

The Same Dimension uses a secret algorithm to generate beautiful new colors.



137.3050, 26.8220, -1.5140



173.0910, 42.0440, -2.0520



153.7410, 19.1220, -16.1580



78.0390, 4.2640, -0.1840



82.0970, 68.2700, -3.7780



10.0780, 8.5280, -0.3680

Inverse Universe

The Inverse Universe completely reimagines the original color for something new.



129.6950, -26.8220, 1.5140



161.3220, -41.7690, 2.5750



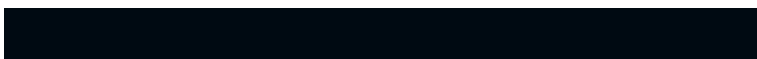
113.2590, -19.1220, 16.1580



76.9610, -4.2640, 0.1840



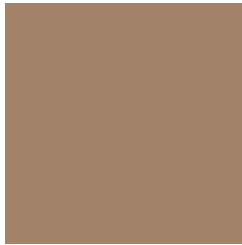
62.9030, -68.2700, 3.7780



7.9220, -8.5280, 0.3680

Previews

White Background



This preview shows how the YIQ color 137.3050, 26.8220, -1.5140 looks on a white background.

Color Contrast Check

Large Text (above 18pt) WCAG AA ✓ Pass

Any Text WCAG AA × Fail

Large Text (above 18pt) WCAG AAA × Fail

Any Text WCAG AAA × Fail

Black Background



This preview shows how the YIQ color 137.3050, 26.8220, -1.5140 looks on a black background.

Color Contrast Check

Large Text (above 18pt) WCAG AA ✓ Pass

Any Text WCAG AA ✓ Pass

Large Text (above 18pt) WCAG AAA ✓ Pass

Any Text WCAG AAA × Fail

If you want to check with other color combinations, try the [Color Contrast Checker](#).

YIQ 137.3050, 26.8220, -1.5140

Background



This preview shows how black text looks on a background with the YIQ color 137.3050, 26.8220, -1.5140.



This preview shows how white text looks on a background with the YIQ color 137.3050, 26.8220,

-1.5140.

Color Blindness Simulation

Color vision deficiency is a very complex topic, and I could not describe the different causes any better than Wikipedia does, so if you want to learn more, you should check out their [article about color blindness](#).

Dichromacy



Original Color

137.3050, 26.8220, -1.5140

Protanopia

136.3850, 14.6730, -7.1110

Deuteranopia

137.0060, 26.2260, -1.7260



Tritanopia

139.3880, 19.7590, 10.8550

Trichromacy



Original Color

137.3050, 26.8220, -1.5140

Protanomaly

136.8910, 19.1200, -5.1040

Deuteranomaly

137.0060, 26.2260, -1.7260

Tritanomaly

138.4220, 22.4190, 6.6990

Monochromacy



Original Color

137.3050, 26.8220, -1.5140

Achromatopsia

137.0000, -0.0000, 0.0000

Achromatomaly

137.1490, 9.7660, -0.7780

CSS Examples

Text

The CSS property to change the color of the text to YIQ 137.3050, 26.8220, -1.5140 is called "color". The color property can be set on classes, ids or directly on the HTML element.

This example shows how text in the color `rgb(162, 131, 105)` looks like.

```
.text, #text, p{  
    color:rgb(162, 131, 105)  
}
```

If you want to add a text shadow in that color use the text-shadow property, you can generate a text shadow directly with our [CSS Text Shadow Generator](#).

Here you see how black text with a 4 pixel rgb(162, 131, 105) colored shadow looks like.

```
.shadow{ text-shadow: 4px 4px 2px rgb(162, 131, 105) }
```

Border

The CSS property to change the border of an element to YIQ 137.3050, 26.8220, -1.5140 is called "border". The border property can be set on classes, ids or directly on the HTML element.

This example shows the color as border, it can be applied via the CSS property "border" or "border-color".

```
.border, #border, table{ border:4px solid rgb(162, 131, 105) }
```


If only the border color should be changed use the property `border-color`.

```
.border{ border-color:rgb(162, 131, 105) }
```

If you want to add a box shadow in that color use:

Here you see how a box with a 4 pixel `rgb(162, 131, 105)` colored shadow looks like.

```
.boxshadow{ -moz-box-shadow:4px 4px 4px  
4px rgb(162, 131, 105); -webkit-box-  
shadow:4px 4px 4px 4px rgb(162, 131, 105);  
box-shadow:4px 4px 4px 4px rgb(162, 131,  
105) }
```

Background

The CSS property to change the background color of an element to YIQ 137.3050, 26.8220, -1.5140 is called "background". The background property can be set on classes, ids or directly on the HTML element.

```
.background, #background, body{  
background: rgb(162, 131, 105) }
```

If only the background color should be changed can be used:

```
.background{ background-color: rgb(162,  
131, 105) }
```

This example shows the color as background, it is applied via the CSS property "background".

To optimize and compress your CSS code, you can use our [online CSS compressor and optimizer](#) based on csstidy. If you want to create a linear or radial gradient as background or border, check our [CSS Gradient Generator](#).

Hey! You found this booklet interesting? Support Converting Colors with the new Membership Option!

The pro membership hides all ads, plus gives you double the colors in the color bucket, and more awesome pro features!

[Learn more, Memberships starting at \\$2.50/m!](#)

**Follow me
on Twitter!**

@ConvertingColor