

Converting Colors

YIQ(137.3370, 23.7960, -1.7400)

Have a look what the booklet for
YIQ(137.3370, 23.7960, -1.7400)
contains.

YIQ(137.3370, 23.7960, -1.7400)	3
<i>Conversions</i>	4
<i>Details</i>	6
<i>Harmonies</i>	12
<i>Previews</i>	24
<i>Color Blindness Simulation</i>	28
<i>CSS Examples</i>	31

Color

**YIQ(137.3370, 23.7960,
-1.7400)**

Conversions

Conversions Part 1

Format	Color
Hex	9F846C
RGB	159, 132, 108
RGB Percent	62%, 52%, 42%
CMY	0.3764, 0.4824, 0.5764
CMYK	0.00, 0.17, 0.32, 0.38
HSL	28°, 21%, 52%
HSV	28°, 32%, 62%
XYZ	25.2586, 24.9550, 17.6809
YIQ	137.3370, 23.7960, -1.7400

Conversions

Conversions Part 2

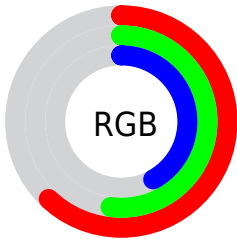
Format	Color
R_{YB}	159, 153, 108
Decimal	10454124
CIE _{Lab}	57.03, 6.67, 16.80
CIE _{LCh}	57, 18.078, 68.352
Yxy	24.9550, 0.3720, 0.3676
Android (android.graphics.Color)	4288644204 (0xFF9F846C)
YUV	137.3370, -14.4631, 18.9985
Hunter-Lab	49.9549, 2.8333, 13.9835

Details

The YIQ color $137.3370, 23.7960, -1.7400$ is a dark color, and the websafe version is hex 996666 . A complement of this color would be $129.6630, -23.7960, 1.7400$, and the grayscale version is $137.0000, -0.0000, 0.0000$.

A 20% lighter version of the original color is $190.8210, 25.3090, -1.6270$, and $87.5540, 21.6870, -2.0650$ is the 20% darker color. If you saturate the color by 10%, you get $130.8170, 31.1320, -2.5320$, and if you desaturate by 10%, it is $143.8570, 16.4600, -0.9480$.

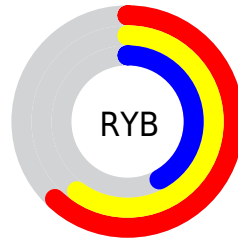
Distribution



Red (62%)

Green (52%)

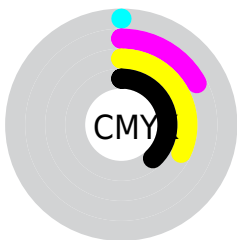
Blue (42%)



Red (62%)

Yellow (60%)

Blue (42%)

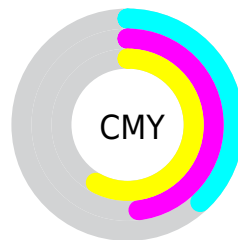


Cyan (0%)

Magenta (17%)

Yellow (32%)

Black (38%)



Cyan (38%)

Magenta (48%)

Yellow (58%)

Brightness & Saturation Gradients

These gradients show how the YIQ color 137.3370, 23.7960, -1.7400 changes by changing the brightness by 10 percent. The first figure shows a shift by +10% for each color and the second figure -10%.

Similar to the brightness gradients but the following saturation gradients show a change of the YIQ color 137.3370, 23.7960, -1.7400 by changing the saturation by 10% instead.

■ 137.3370, 23.7960,
-1.7400

■ 137.3370, 23.7960,
-1.7400

■ 255.0000, -0.0000,
-0.0000

■ 111.8530, 22.2830,
-1.8530

■ 190.8210, 25.3090,
-1.6270

■ 87.5540, 21.6870,
-2.0650

■ 219.0060, 26.2260,
-1.7260

■ 64.0700, 20.1740,
-2.1780

■ 242.1080, 17.0110,
-5.4290

■ 41.7000, 18.3400,
-1.9800

■ 253.6320, 3.8520,
-3.7320

■ 21.3300, 16.5060,
-1.7820

■ 0.0000, 0.0000,
0.0000

■ 137.3370, 23.7960,
-1.7400

■ 137.3370, 23.7960,
-1.7400

■ 130.8170, 31.1320,
-2.5320

■ 143.8570, 16.4600,
-0.9480

■ 123.7100, 38.7430,
-2.8010

■ 150.9640, 8.8490,
-0.6790

■ 117.1900, 46.0790,
-3.5930

■ 157.4840, 1.5130,
0.1130

■ 110.0830, 53.6900,
-3.8620

■ 164.5910, -6.0980,
0.3820

■ 103.6770, 60.7050,
-4.3430

■ 171.1110,
-13.4340, 1.1740

■ 96.5700, 68.3160,
-4.6120

■ 178.1040,
-20.7240, 1.1320

■ 91.5660, 74.1390,
-5.5170

■ 184.6240,
-28.0600, 1.9240

■ 191.1440,

-35.3960, 2.7160

■ 198.2510,
-43.0070, 2.9850

Harmonies

Analogous

The Analogous color harmony consists of three colors that are next to each other on the color wheel.



138.8200, 27.0500, 5.3700



137.3370, 23.7960, -1.7400



135.5590, 14.1230, -8.1570

Triad

The Triadic color harmony groups three colors that are evenly spaced from another and form a triangle on the color wheel.



137.3370, 23.7960, -1.7400



130.4800, -28.1950, -12.1550



138.7200, -1.6070, 12.6090

Complementary

The Complementary color scheme is a pair of colors which are on the opposite of each other on the color wheel.



137.3370, 23.7960, -1.7400



129.6630, -23.7960, 1.7400

Split Complementary

Split-complementary colors differ from the complementary color scheme. The scheme consists of three colors, the original color and two neighbors of the complement color.



136.6470, -17.6990, 6.8850



137.3370, 23.7960, -1.7400



131.0050, -33.9270, -7.3910

Square

The Square scheme is like the rectangle color scheme, but the four colors are evenly spaced on the color wheel.



137.3370, 23.7960, -1.7400



131.9560, -15.0360, -13.8520



133.6730, -29.7560, -0.3800



139.6740, 13.2020, 14.0500

Rectangle

The Rectangle color scheme consists of four colors that form a rectangle on the color wheel.



137.3370, 23.7960, -1.7400



134.3730, 5.7790, -11.1250



133.6730, -29.7560, -0.3800



138.1430, -7.2920, 11.0120

Sweetspot

The Sweet Spot groups the original color and five complimentary colors.



137.3370, 23.7960, -1.7400



198.1490, 9.7660, -0.7780



126.3270, 21.7290, 19.2090



99.4090, 6.0980, -0.3820



232.0000, -0.0000, 0.0000



105.0000, 0.0000, 0.0000

Same Dimension

The Same Dimension uses a secret algorithm to generate beautiful new colors.



137.3370, 23.7960, -1.7400



173.3400, 36.9090, -2.6030



152.0120, 16.9210, -14.8150



75.7400, 3.6680, -0.3960



82.0860, 66.8030, -4.7250



8.5940, 7.0150, -0.4810

Inverse Universe

The Inverse Universe completely reimagines the original color for something new.



129.6630, -23.7960, 1.7400



161.6600, -36.9090, 2.6030



114.9880, -16.9210, 14.8150



74.2600, -3.6680, 0.3960



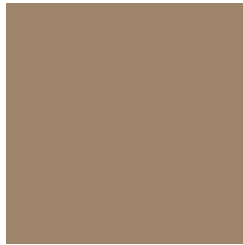
60.9140, -66.8030, 4.7250



6.4060, -7.0150, 0.4810

Previews

White Background



This preview shows how the YIQ color 137.3370, 23.7960, -1.7400 looks on a white background.

Color Contrast Check

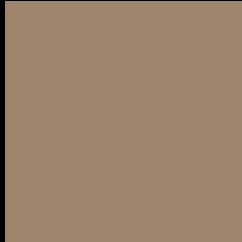
Large Text (above 18pt) WCAG AA ✓ Pass

Any Text WCAG AA × Fail

Large Text (above 18pt) WCAG AAA × Fail

Any Text WCAG AAA × Fail

Black Background



This preview shows how the YIQ color 137.3370, 23.7960, -1.7400 looks on a black background.

Color Contrast Check

Large Text (above 18pt) WCAG AA ✓ Pass

Any Text WCAG AA ✓ Pass

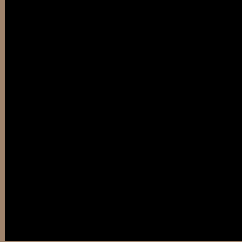
Large Text (above 18pt) WCAG AAA ✓ Pass

Any Text WCAG AAA × Fail

If you want to check with other color combinations, try the [Color Contrast Checker](#).

YIQ 137.3370, 23.7960, -1.7400

Background



This preview shows how black text looks on a background with the YIQ color 137.3370, 23.7960, -1.7400.



This preview shows how white text looks on a background with the YIQ color 137.3370, 23.7960,

-1.7400.

Color Blindness Simulation

Color vision deficiency is a very complex topic, and I could not describe the different causes any better than Wikipedia does, so if you want to learn more, you should check out their [article about color blindness](#).

Dichromacy



Original Color

137.3370, 23.7960, -1.7400

Protanopia

136.3140, 13.4350, -6.7010

Deuteranopia

137.6360, 24.3920, -1.5280



Tritanopia

139.3060, 17.0540, 10.3180

Trichromacy



Original Color

137.3370, 23.7960, -1.7400

Protanomaly

136.5210, 17.2860, -4.9060

Deuteranomaly

137.6360, 24.3920, -1.5280

Tritanomaly

138.3400, 19.7140, 6.1620

Monochromacy



Original Color

137.3370, 23.7960, -1.7400

Achromatopsia

137.0000, -0.0000, 0.0000

Achromatomaly

136.9640, 8.8490, -0.6790

CSS Examples

Text

The CSS property to change the color of the text to YIQ 137.3370, 23.7960, -1.7400 is called "color". The color property can be set on classes, ids or directly on the HTML element.

This example shows how text in the color `rgb(159, 132, 108)` looks like.

```
.text, #text, p{  
    color:rgb(159, 132, 108)  
}
```

If you want to add a text shadow in that color use the text-shadow property, you can generate a text shadow directly with our [CSS Text Shadow Generator](#).

Here you see how black text with a 4 pixel rgb(159, 132, 108) colored shadow looks like.

```
.shadow{ text-shadow: 4px 4px 2px rgb(159, 132, 108) }
```

Border

The CSS property to change the border of an element to YIQ 137.3370, 23.7960, -1.7400 is called "border". The border property can be set on classes, ids or directly on the HTML element.

This example shows the color as border, it can be applied via the CSS property "border" or "border-color".

```
.border, #border, table{ border:4px solid rgb(159, 132, 108) }
```


If only the border color should be changed use the property border-color.

```
.border{ border-color:rgb(159, 132, 108) }
```

If you want to add a box shadow in that color use:

Here you see how a box with a 4 pixel rgb(159, 132, 108) colored shadow looks like.

```
.boxshadow{ -moz-box-shadow:4px 4px 4px  
4px rgb(159, 132, 108); -webkit-box-  
shadow:4px 4px 4px 4px rgb(159, 132, 108);  
box-shadow:4px 4px 4px 4px rgb(159, 132,  
108) }
```

Background

The CSS property to change the background color of an element to YIQ 137.3370, 23.7960, -1.7400 is called "background". The background property can be set on classes, ids or directly on the HTML element.

```
.background, #background, body{  
background: rgb(159, 132, 108) }
```

If only the background color should be changed can be used:

```
.background{ background-color: rgb(159,  
132, 108) }
```

This example shows the color as background, it is applied via the CSS property "background".

To optimize and compress your CSS code, you can use our [online CSS compressor and optimizer](#) based on csstidy. If you want to create a linear or radial gradient as background or border, check our [CSS Gradient Generator](#).

Hey! You found this booklet interesting? Support Converting Colors with the new Membership Option!

The pro membership hides all ads, plus gives you double the colors in the color bucket, and more awesome pro features!

[Learn more, Memberships starting at \\$2.50/m!](#)

**Follow me
on Twitter!**

@ConvertingColor