

Converting Colors

YIQ(137.4850, 35.3030, 4.4790)

Have a look what the booklet for
YIQ(137.4850, 35.3030, 4.4790)
contains.

YIQ(137.4850, 35.3030, 4.4790)	3
<i>Conversions</i>	4
<i>Details</i>	6
<i>Harmonies</i>	12
<i>Previews</i>	24
<i>Color Blindness Simulation</i>	28
<i>CSS Examples</i>	31

Color

**YIQ(137.4850, 35.3030,
4.4790)**

Conversions

Conversions Part 1

Format	Color
Hex	AE7D6A
RGB	174, 125, 106
RGB Percent	68%, 49%, 42%
CMY	0.3175, 0.5099, 0.5842
CMYK	0.00, 0.28, 0.39, 0.32
HSL	17°, 30%, 55%
HSV	17°, 39%, 68%
XYZ	27.3961, 24.7052, 16.9711
YIQ	137.4850, 35.3030, 4.4790

Conversions

Conversions Part 2

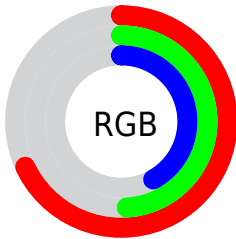
Format	Color
RYB	174, 132, 106
Decimal	11435370
CIELab	56.79, 16.55, 17.86
CIELCh	57, 24.348, 47.189
Yxy	24.7052, 0.3966, 0.3577
Android (android.graphics.Color)	4289625450 (0xFFAE7D6A)
YUV	137.4850, -15.5221, 32.0237
Hunter-Lab	49.7043, 11.4034, 14.5490

Details

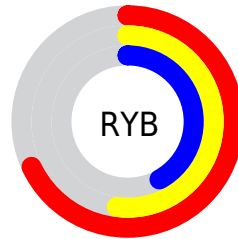
The YIQ color **137.4850, 35.3030, 4.4790** is a dark color, and the websafe version is hex **996666**. A complement of this color would be **142.5150, -35.3030, -4.4790**, and the grayscale version is **138.0000, -0.0000, -0.0000**.

A 20% lighter version of the original color is **191.4530, 38.3290, 4.7050**, and **87.2180, 31.6810, 4.0410** is the 20% darker color. If you saturate the color by 10%, you get **127.9160, 44.3350, 5.9910**, and if you desaturate by 10%, it is **147.0540, 26.2710, 2.9670**.

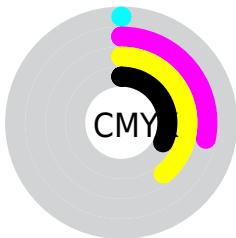
Distribution



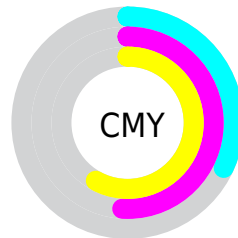
- Red (68%)
- Green (49%)
- Blue (42%)



- Red (68%)
- Yellow (52%)
- Blue (42%)



- Cyan (0%)
- Magenta (28%)
- Yellow (39%)
- Black (32%)



- Cyan (32%)
- Magenta (51%)
- Yellow (58%)

Brightness & Saturation Gradients

These gradients show how the YIQ color 137.4850, 35.3030, 4.4790 changes by changing the brightness by 10 percent. The first figure shows a shift by +10% for each color and the second figure -10%.

Similar to the brightness gradients but the following saturation gradients show a change of the YIQ color 137.4850, 35.3030, 4.4790 by changing the saturation by 10% instead.

■ 137.4850, 35.3030,
4.4790

■ 137.4850, 35.3030,
4.4790

■ 255.0000, -0.0000,
-0.0000

■ 112.0010, 33.7900,
4.3660

■ 191.4530, 38.3290,
4.7050

■ 87.2180, 31.6810,
4.0410

■ 217.5560, 36.5410,
4.0690

■ 63.4350, 29.5720,
3.7160

■ 237.7710, 19.5780,
-2.3900

■ 40.3530, 26.8670,
3.1790

■ 253.2900, 4.8150,
-4.6650

■ 19.0260, 23.4740,
4.0980

■ 2.0930, 4.1720,
1.4840

■ 0.0000, 0.0000,

0.0000

■ 137.4850, 35.3030,
4.4790

■ 137.4850, 35.3030,
4.4790

■ 127.9160, 44.3350,
5.9910

■ 147.0540, 26.2710,
2.9670

■ 118.8200, 53.4130,
6.6690

■ 156.1500, 17.1930,
2.2890

■ 109.2510, 62.4450,
8.1810

■ 165.7190, 8.1610,
0.7770

■ 100.1550, 71.5230,
8.8590

■ 174.8150, -0.9170,
0.0990

■ 90.5860, 80.5550,
10.3710

■ 184.3840, -9.9490,
-1.4130

■ 81.6040, 89.3120,
11.3600

■ 193.3660,
-18.7060, -2.4020

■ 80.2020, 90.5040,
11.7840

■ 203.0490,
-28.0590, -3.6030

■ 212.0310,
-36.8160, -4.5920

■ 220.8020,
-43.6010, -8.2810

Harmonies

Analogous

The Analogous color harmony consists of three colors that are next to each other on the color wheel.



138.7980, 33.2840, 13.5400



137.4850, 35.3030, 4.4790



136.1540, 28.5650, -5.5710

Triad

The Triadic color harmony groups three colors that are evenly spaced from another and form a triangle on the color wheel.



137.4850, 35.3030, 4.4790



127.8620, -26.6350, -18.4030



136.8090, -17.9750, 11.8890

Complementary

The Complementary color scheme is a pair of colors which are on the opposite of each other on the color wheel.



137.4850, 35.3030, 4.4790



142.5150, -35.3030, -4.4790

Split Complementary

Split-complementary colors differ from the complementary color scheme. The scheme consists of three colors, the original color and two neighbors of the complement color.



131.6490, -38.3760, 1.6560



137.4850, 35.3030, 4.4790



125.2760, -45.2960, -16.1120

Square

The Square scheme is like the rectangle color scheme, but the four colors are evenly spaced on the color wheel.



137.4850, 35.3030, 4.4790



131.1110, -5.4070, -17.6550



126.5670, -50.2490, -8.9450



139.4050, 3.8940, 17.5420

Rectangle

The Rectangle color scheme consists of four colors that form a rectangle on the color wheel.



137.4850, 35.3030, 4.4790



134.7890, 19.1670, -11.4650



126.5670, -50.2490, -8.9450



134.8080, -25.4020, 8.8220

Sweetspot

The Sweet Spot groups the original color and five complimentary colors.



137.4850, 35.3030, 4.4790



212.1820, 14.1670, 2.0630



132.0320, 24.4780, 29.9660



106.1320, 8.4360, 1.3000



242.0000, -0.0000, 0.0000



115.0000, -0.0000, 0.0000

Same Dimension

The Same Dimension uses a secret algorithm to generate beautiful new colors.



137.4850, 35.3030, 4.4790



169.6030, 55.5220, 6.9940



156.8560, 26.2280, -12.7800



81.8650, 4.8140, 0.8620



69.5040, 77.8500, 9.8340



10.3990, 12.0580, 1.7380

Inverse Universe

The Inverse Universe completely reimagines the original color for something new.



142.5150, -35.3030, -4.4790



177.3970, -55.5220, -6.9940



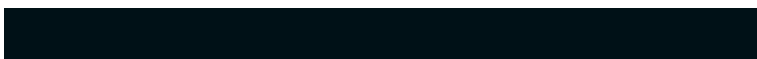
123.1440, -26.2280, 12.7800



82.5480, -4.5390, -0.3390



81.0830, -78.1250, -10.3570



12.6010, -12.0580, -1.7380

Previews

White Background



This preview shows how the YIQ color 137.4850, 35.3030, 4.4790 looks on a white background.

Color Contrast Check

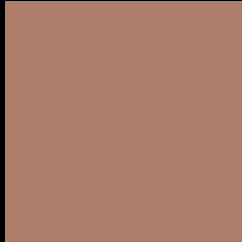
Large Text (above 18pt) WCAG AA ✓ Pass

Any Text WCAG AA × Fail

Large Text (above 18pt) WCAG AAA × Fail

Any Text WCAG AAA × Fail

Black Background



This preview shows how the YIQ color 137.4850, 35.3030, 4.4790 looks on a black background.

Color Contrast Check

Large Text (above 18pt) WCAG AA ✓ Pass

Any Text WCAG AA ✓ Pass

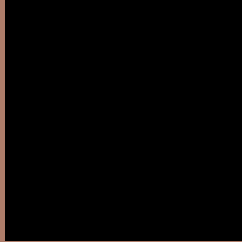
Large Text (above 18pt) WCAG AAA ✓ Pass

Any Text WCAG AAA × Fail

If you want to check with other color combinations, try the [Color Contrast Checker](#).

YIQ 137.4850, 35.3030, 4.4790

Background



This preview shows how black text looks on a background with the YIQ color 137.4850, 35.3030, 4.4790.



This preview shows how white text looks on a background with the YIQ color 137.4850, 35.3030,

Color Blindness Simulation

Color vision deficiency is a very complex topic, and I could not describe the different causes any better than Wikipedia does, so if you want to learn more, you should check out their [article about color blindness](#).

Dichromacy



Original Color

137.4850, 35.3030, 4.4790

Protanopia

135.8410, 13.3890, -5.8670

Deuteranopia

136.7070, 25.6300, -1.9380



Tritanopia

138.5850, 29.5700, 14.7700

Trichromacy



Original Color

137.4850, 35.3030, 4.4790

Protanomaly

136.5540, 21.6870, -2.0650

Deuteranomaly

137.0280, 29.1600, 0.1680

Tritanomaly

137.8470, 31.5880, 11.2360

Monochromacy



Original Color

137.4850, 35.3030, 4.4790

Achromatopsia

137.0000, -0.0000, 0.0000

Achromatomaly

137.2850, 12.3790, 1.4270

CSS Examples

Text

The CSS property to change the color of the text to YIQ 137.4850, 35.3030, 4.4790 is called "color". The color property can be set on classes, ids or directly on the HTML element.

This example shows how text in the color `rgb(174, 125, 106)` looks like.

```
.text, #text, p{  
    color:rgb(174, 125, 106)  
}
```

If you want to add a text shadow in that color use the text-shadow property, you can generate a text shadow directly with our [CSS Text Shadow Generator](#).

Here you see how black text with a 4 pixel rgb(174, 125, 106) colored shadow looks like.

```
.shadow{ text-shadow: 4px 4px 2px rgb(174, 125, 106) }
```

Border

The CSS property to change the border of an element to YIQ 137.4850, 35.3030, 4.4790 is called "border". The border property can be set on classes, ids or directly on the HTML element.

This example shows the color as border, it can be applied via the CSS property "border" or "border-color".

```
.border, #border, table{ border:4px solid rgb(174, 125, 106) }
```


If only the border color should be changed use the property `border-color`.

```
.border{ border-color:rgb(174, 125, 106) }
```

If you want to add a box shadow in that color use:

Here you see how a box with a 4 pixel `rgb(174, 125, 106)` colored shadow looks like.

```
.boxshadow{ -moz-box-shadow:4px 4px 4px  
4px rgb(174, 125, 106); -webkit-box-  
shadow:4px 4px 4px 4px rgb(174, 125, 106);  
box-shadow:4px 4px 4px 4px rgb(174, 125,  
106) }
```

Background

The CSS property to change the background color of an element to YIQ 137.4850, 35.3030, 4.4790 is called "background". The background property can be set on classes, ids or directly on the HTML element.

```
.background, #background, body{  
background: rgb(174, 125, 106) }
```

If only the background color should be changed can be used:

```
.background{ background-color: rgb(174,  
125, 106) }
```

This example shows the color as background, it is applied via the CSS property "background".

To optimize and compress your CSS code, you can use our [online CSS compressor and optimizer](#) based on csstidy. If you want to create a linear or radial gradient as background or border, check our [CSS Gradient Generator](#).

Hey! You found this booklet interesting? Support Converting Colors with the new Membership Option!

The pro membership hides all ads, plus gives you double the colors in the color bucket, and more awesome pro features!

[Learn more, Memberships starting at \\$2.50/m!](#)

**Follow me
on Twitter!**

@ConvertingColor