

Converting Colors

YIQ(138.6300, 41.7240, -7.2680)

Have a look what the booklet for
YIQ(138.6300, 41.7240, -7.2680)
contains.

YIQ(138.6300, 41.7240, -7.2680)	3
<i>Conversions</i>	4
<i>Details</i>	6
<i>Harmonies</i>	12
<i>Previews</i>	24
<i>Color Blindness Simulation</i>	28
<i>CSS Examples</i>	31

Color

**YIQ(138.6300, 41.7240,
-7.2680)**

Conversions

Conversions Part 1

Format	Color
Hex	AE8450
RGB	174, 132, 80
RGB Percent	68%, 52%, 31%
CMY	0.3176, 0.4824, 0.6861
CMYK	0.00, 0.24, 0.54, 0.32
HSL	33°, 37%, 50%
HSV	33°, 54%, 68%
XYZ	27.1582, 26.0783, 11.2018
YIQ	138.6300, 41.7240, -7.2680

Conversions

Conversions Part 2

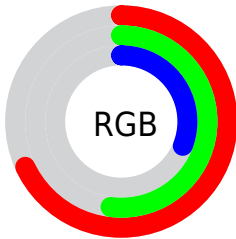
Format	Color
RYB	156, 174, 80
Decimal	11437136
CIELab	58.11, 9.88, 34.06
CIELCh	58, 35.467, 73.827
Yxy	26.0783, 0.4215, 0.4047
Android (android.graphics.Color)	4289627216 (0xFFAE8450)
YUV	138.6300, -28.9046, 31.0195
Hunter-Lab	51.0669, 5.5618, 22.7413

Details

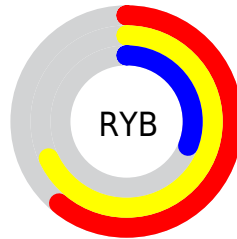
The YIQ color **138.6300, 41.7240, -7.2680** is a dark color, and the websafe version is hex **CC9966**. A complement of this color would be **115.3700, -41.7240, 7.2680**, and the grayscale version is **139.0000, -0.0000, 0.0000**.

A 20% lighter version of the original color is **192.7830, 45.6670, -7.1410**, and **88.0640, 37.5060, -7.9180** is the 20% darker color. If you saturate the color by 10%, you get **131.9960, 49.3810, -8.3710**, and if you desaturate by 10%, it is **145.2640, 34.0670, -6.1650**.

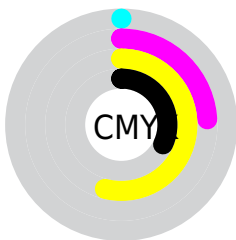
Distribution



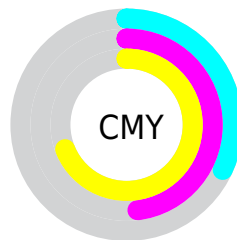
- Red (68%)
- Green (52%)
- Blue (31%)



- Red (61%)
- Yellow (68%)
- Blue (31%)



- Cyan (0%)
- Magenta (24%)
- Yellow (54%)
- Black (32%)



- Cyan (32%)
- Magenta (48%)
- Yellow (69%)

Brightness & Saturation Gradients

These gradients show how the YIQ color 138.6300, 41.7240, -7.2680 changes by changing the brightness by 10 percent. The first figure shows a shift by +10% for each color and the second figure -10%.

Similar to the brightness gradients but the following saturation gradients show a change of the YIQ color 138.6300, 41.7240, -7.2680 by changing the saturation by 10% instead.

■ 138.6300, 41.7240,
-7.2680

■ 138.6300, 41.7240,
-7.2680

■ 255.0000, -0.0000,
-0.0000

■ 112.8470, 39.6150,
-7.5930

■ 192.7830, 45.6670,
-7.1410

■ 88.0640, 37.5060,
-7.9180

■ 219.1740, 43.0080,
-8.5120

■ 63.7540, 35.4430,
-9.0770

■ 238.6880, 26.6410,
-14.7590

■ 42.3390, 29.4820,
-5.6700

■ 250.0980, 13.8030,
-13.3730

■ 22.8250, 19.4860,
-0.7220

■ 253.2900, 4.8150,
-4.6650

■ 1.4950, 2.9800,
1.0600

■ 0.0000, 0.0000,

0.0000

■ 138.6300, 41.7240,
-7.2680

■ 138.6300, 41.7240,
-7.2680

■ 131.9960, 49.3810,
-8.3710

■ 145.2640, 34.0670,
-6.1650

■ 125.2480, 57.3590,
-9.7850

■ 152.0120, 26.0890,
-4.7510

■ 119.2010, 64.7410,
-11.4110

■ 158.0590, 18.7070,
-3.1250

■ 112.4530, 72.7190,
-12.8250

■ 164.8070, 10.7290,
-1.7110

■ 108.3780, 77.3040,
-13.3200

■ 171.4410, 3.0720,
-0.6080

■ 178.0750, -4.5850,
0.4950

■ 184.2360,
-12.2880, 2.4320

■ 190.8700,
-19.9450, 3.5350

■ 197.6180,
-27.9230, 4.9490

Harmonies

Analogous

The Analogous color harmony consists of three colors that are next to each other on the color wheel.



140.2050, 50.8910, 8.3230



138.6300, 41.7240, -7.2680



135.6010, 22.3320, -19.2680

Triad

The Triadic color harmony groups three colors that are evenly spaced from another and form a triangle on the color wheel.



138.6300, 41.7240, -7.2680



109.0140, -92.0130, -34.0050



143.1910, 1.9210, 25.7690

Complementary

The Complementary color scheme is a pair of colors which are on the opposite of each other on the color wheel.



138.6300, 41.7240, -7.2680



115.3700, -41.7240, 7.2680

Split Complementary

Split-complementary colors differ from the complementary color scheme. The scheme consists of three colors, the original color and two neighbors of the complement color.



138.7890, -32.4180, 14.8300



138.6300, 41.7240, -7.2680



111.1460, -100.7720, -23.9400

Square

The Square scheme is like the rectangle color scheme, but the four colors are evenly spaced on the color wheel.



138.6300, 41.7240, -7.2680



125.7090, -39.7460, -28.5940



126.9040, -70.0110, -3.2190



143.2020, 29.7510, 28.0150

Rectangle

The Rectangle color scheme consists of four colors that form a rectangle on the color wheel.



138.6300, 41.7240, -7.2680



133.5710, 4.6810, -24.2710



126.9040, -70.0110, -3.2190



142.3360, -8.8530, 22.7870

Sweetspot

The Sweet Spot groups the original color and five complimentary colors.



138.6300, 41.7240, -7.2680



213.5040, 15.9560, -2.8280



112.8940, 42.5420, 32.9900



106.6220, 9.8120, -1.6120



242.0000, -0.0000, 0.0000



115.0000, -0.0000, 0.0000

Same Dimension

The Same Dimension uses a secret algorithm to generate beautiful new colors.



138.6300, 41.7240, -7.2680



171.3860, 65.6580, -11.5100



161.7890, 27.1940, -30.2940



83.6260, 3.9890, -0.7070



93.5710, 66.5750, -11.6090



14.5080, 10.1330, -1.9230

Inverse Universe

The Inverse Universe completely reimagines the original color for something new.



115.3700, -41.7240, 7.2680



134.6140, -65.6580, 11.5100



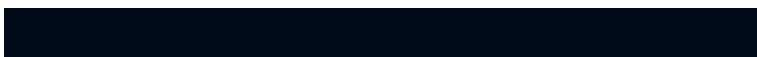
92.2110, -27.1940, 30.2940



81.3740, -3.9890, 0.7070



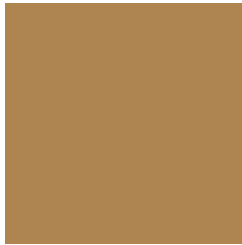
56.4290, -66.5750, 11.6090



8.4920, -10.1330, 1.9230

Previews

White Background



This preview shows how the YIQ color 138.6300, 41.7240, -7.2680 looks on a white background.

Color Contrast Check

Large Text (above 18pt) WCAG AA ✓ Pass

Any Text WCAG AA × Fail

Large Text (above 18pt) WCAG AAA × Fail

Any Text WCAG AAA × Fail

Black Background



This preview shows how the YIQ color 138.6300, 41.7240, -7.2680 looks on a black background.

Color Contrast Check

Large Text (above 18pt) WCAG AA ✓ Pass

Any Text WCAG AA ✓ Pass

Large Text (above 18pt) WCAG AAA ✓ Pass

Any Text WCAG AAA × Fail

If you want to check with other color combinations, try the [Color Contrast Checker](#).

YIQ 138.6300, 41.7240, -7.2680

Background



This preview shows how black text looks on a background with the YIQ color 138.6300, 41.7240, -7.2680.



This preview shows how white text looks on a background with the YIQ color 138.6300, 41.7240, -7.2680.

-7.2680.

Color Blindness Simulation

Color vision deficiency is a very complex topic, and I could not describe the different causes any better than Wikipedia does, so if you want to learn more, you should check out their [article about color blindness](#).

Dichromacy



Original Color

138.6300, 41.7240, -7.2680

Protanopia

137.3890, 26.0450, -14.9710

Deuteranopia

138.3200, 39.6610, -8.4270



Tritanopia

142.2860, 28.9740, 14.5580

Trichromacy



Original Color

138.6300, 41.7240, -7.2680

Protanomaly

137.9060, 31.9590, -12.0170

Deuteranomaly

138.6190, 40.2570, -8.2150

Tritanomaly

141.1690, 33.3770, 6.3450

Monochromacy



Original Color

138.6300, 41.7240, -7.2680

Achromatopsia

139.0000, -0.0000, 0.0000

Achromatomaly

138.7320, 15.3140, -2.2060

CSS Examples

Text

The CSS property to change the color of the text to YIQ 138.6300, 41.7240, -7.2680 is called "color". The color property can be set on classes, ids or directly on the HTML element.

This example shows how text in the color `rgb(174, 132, 80)` looks like.

```
.text, #text, p{  
    color:rgb(174, 132, 80)  
}
```

If you want to add a text shadow in that color use the text-shadow property, you can generate a text shadow directly with our [CSS Text Shadow Generator](#).

Here you see how black text with a 4 pixel rgb(174, 132, 80) colored shadow looks like.

```
.shadow{ text-shadow: 4px 4px 2px rgb(174, 132, 80) }
```

Border

The CSS property to change the border of an element to YIQ 138.6300, 41.7240, -7.2680 is called "border". The border property can be set on classes, ids or directly on the HTML element.

This example shows the color as border, it can be applied via the CSS property "border" or "border-color".

```
.border, #border, table{ border:4px solid rgb(174, 132, 80) }
```


If only the border color should be changed use the property `border-color`.

```
.border{ border-color:rgb(174, 132, 80) }
```

If you want to add a box shadow in that color use:

Here you see how a box with a 4 pixel `rgb(174, 132, 80)` colored shadow looks like.

```
.boxshadow{ -moz-box-shadow:4px 4px 4px  
4px rgb(174, 132, 80); -webkit-box-  
shadow:4px 4px 4px 4px rgb(174, 132, 80);  
box-shadow:4px 4px 4px 4px rgb(174, 132,  
80) }
```

Background

The CSS property to change the background color of an element to YIQ 138.6300, 41.7240, -7.2680 is called "background". The background property can be set on classes, ids or directly on the HTML element.

```
.background, #background, body{  
background: rgb(174, 132, 80) }
```

If only the background color should be changed can be used:

```
.background{ background-color: rgb(174,  
132, 80) }
```

This example shows the color as background, it is applied via the CSS property "background".

To optimize and compress your CSS code, you can use our [online CSS compressor and optimizer](#) based on csstidy. If you want to create a linear or radial gradient as background or border, check our [CSS Gradient Generator](#).

Hey! You found this booklet interesting? Support Converting Colors with the new Membership Option!

The pro membership hides all ads, plus gives you double the colors in the color bucket, and more awesome pro features!

[Learn more, Memberships starting at \\$2.50/m!](#)

**Follow me
on Twitter!**

@ConvertingColor