

Converting Colors

YIQ(139.2340, 25.5840, -1.1040)

Have a look what the booklet for
YIQ(139.2340, 25.5840, -1.1040)
contains.

YIQ(139.2340, 25.5840, -1.1040)	3
<i>Conversions</i>	4
<i>Details</i>	6
<i>Harmonies</i>	12
<i>Previews</i>	24
<i>Color Blindness Simulation</i>	28
<i>CSS Examples</i>	31

Color

**YIQ(139.2340, 25.5840,
-1.1040)**

Conversions

Conversions Part 1

Format	Color
Hex	A3856D
RGB	163, 133, 109
RGB Percent	64%, 52%, 43%
CMY	0.3607, 0.4785, 0.5724
CMYK	0.00, 0.18, 0.33, 0.36
HSL	27°, 23%, 53%
HSV	27°, 33%, 64%
XYZ	26.2550, 25.6644, 18.0466
YIQ	139.2340, 25.5840, -1.1040

Conversions

Conversions Part 2

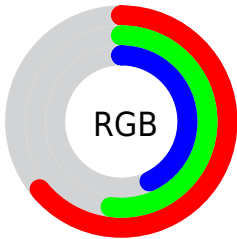
Format	Color
R_{YB}	163, 152, 109
Decimal	10716525
CIE _{Lab}	57.72, 7.89, 17.24
CIE _{LCh}	58, 18.956, 65.417
Yxy	25.6644, 0.3753, 0.3668
Android (android.graphics.Color)	4288906605 (0xFFA3856D)
YUV	139.2340, -14.9054, 20.8428
Hunter-Lab	50.6601, 3.8539, 14.3412

Details

The YIQ color $139.2340, 25.5840, -1.1040$ is a dark color, and the websafe version is hex 996666 . A complement of this color would be $132.7660, -25.5840, 1.1040$, and the grayscale version is $139.0000, -0.0000, 0.0000$.

A 20% lighter version of the original color is $193.0170, 27.6930, -0.7790$, and $89.1520, 22.8790, -1.6410$ is the 20% darker color. If you saturate the color by 10%, you get $132.1270, 33.1950, -1.3730$, and if you desaturate by 10%, it is $146.3410, 17.9730, -0.8350$.

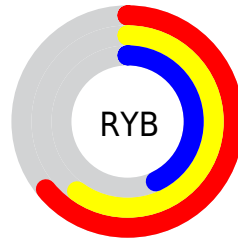
Distribution



Red (64%)

Green (52%)

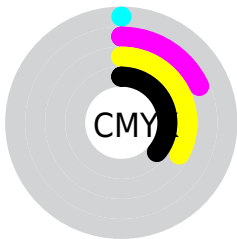
Blue (43%)



Red (64%)

Yellow (60%)

Blue (43%)

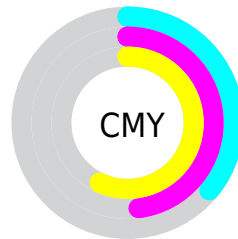


Cyan (0%)

Magenta (18%)

Yellow (33%)

Black (36%)



Cyan (36%)

Magenta (48%)

Yellow (57%)

Brightness & Saturation Gradients

These gradients show how the YIQ color 139.2340, 25.5840, -1.1040 changes by changing the brightness by 10 percent. The first figure shows a shift by +10% for each color and the second figure -10%.

Similar to the brightness gradients but the following saturation gradients show a change of the YIQ color 139.2340, 25.5840, -1.1040 by changing the saturation by 10% instead.

■ 139.2340, 25.5840,
-1.1040

■ 139.2340, 25.5840,
-1.1040

■ 255.0000, -0.0000,
-0.0000

■ 113.7500, 24.0710,
-1.2170

■ 193.0170, 27.6930,
-0.7790

■ 89.1520, 22.8790,
-1.6410

■ 221.2020, 28.6100,
-0.8780

■ 65.0810, 21.6410,
-1.2310

■ 242.8090, 16.4150,
-5.6410

■ 43.2980, 19.5320,
-1.5560

■ 253.7460, 3.5310,
-3.4210

■ 21.9280, 17.6980,
-1.3580

■ 0.0000, 0.0000,
0.0000

■ 139.2340, 25.5840,
-1.1040

■ 139.2340, 25.5840,
-1.1040

■ 132.1270, 33.1950,
-1.3730

■ 146.3410, 17.9730,
-0.8350

■ 124.9060, 41.1270,
-1.9530

■ 153.5620, 10.0410,
-0.2550

■ 117.7990, 48.7380,
-2.2220

■ 160.6690, 2.4300,
0.0140

■ 110.6920, 56.3490,
-2.4910

■ 167.7760, -5.1810,
0.2830

■ 103.5850, 63.9600,
-2.7600

■ 174.9970,
-13.1130, 0.8630

■ 96.3640, 71.8920,
-3.3400

■ 182.1040,
-20.7240, 1.1320

■ 91.0010, 77.3480,
-3.1000

■ 189.2110,
-28.3350, 1.4010

■ 196.9050,

-36.2210, 1.1470

■ 204.0120,
-43.8320, 1.4160

Harmonies

Analogous

The Analogous color harmony consists of three colors that are next to each other on the color wheel.



140.8310, 28.5170, 6.3170



139.2340, 25.5840, -1.1040



137.9290, 15.9570, -8.3550

Triad

The Triadic color harmony groups three colors that are evenly spaced from another and form a triangle on the color wheel.



139.2340, 25.5840, -1.1040



131.6540, -28.7450, -13.2010



140.3500, -3.4410, 12.8070

Complementary

The Complementary color scheme is a pair of colors which are on the opposite of each other on the color wheel.



139.2340, 25.5840, -1.1040



132.7660, -25.5840, 1.1040

Split Complementary

Split-complementary colors differ from the complementary color scheme. The scheme consists of three colors, the original color and two neighbors of the complement color.



137.8640, -19.8080, 6.5600



139.2340, 25.5840, -1.1040



131.6950, -35.9900, -8.5500

Square

The Square scheme is like the rectangle color scheme, but the four colors are evenly spaced on the color wheel.



139.2340, 25.5840, -1.1040



133.6140, -14.0730, -14.7850



134.4770, -32.1400, -1.2280



141.9020, 12.5600, 14.6720

Rectangle

The Rectangle color scheme consists of four colors that form a rectangle on the color wheel.



139.2340, 25.5840, -1.1040



136.4440, 7.0170, -11.5350



134.4770, -32.1400, -1.2280



139.6590, -8.8050, 10.8990

Sweetspot

The Sweet Spot groups the original color and five complimentary colors.



139.2340, 25.5840, -1.1040



202.4480, 10.3620, -0.5660



128.6800, 22.2330, 21.0890



101.4090, 6.0980, -0.3820



235.0000, 0.0000, -0.0000



107.0000, -0.0000, 0.0000

Same Dimension

The Same Dimension uses a secret algorithm to generate beautiful new colors.



139.2340, 25.5840, -1.1040



174.7210, 40.2100, -1.8540



154.4960, 18.4340, -14.7020



78.0390, 4.2640, -0.1840



81.5100, 68.5450, -3.2550



10.0780, 8.5280, -0.3680

Inverse Universe

The Inverse Universe completely reimagines the original color for something new.



132.7660, -25.5840, 1.1040



164.2790, -40.2100, 1.8540



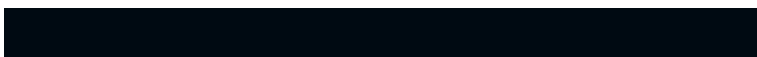
117.5040, -18.4340, 14.7020



76.9610, -4.2640, 0.1840



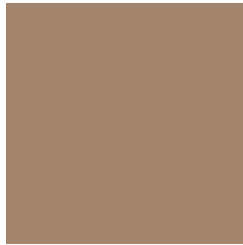
64.0770, -68.8200, 2.7320



7.9220, -8.5280, 0.3680

Previews

White Background



This preview shows how the YIQ color 139.2340, 25.5840, -1.1040 looks on a white background.

Color Contrast Check

Large Text (above 18pt) WCAG AA ✓ Pass

Any Text WCAG AA × Fail

Large Text (above 18pt) WCAG AAA × Fail

Any Text WCAG AAA × Fail

Black Background



This preview shows how the YIQ color 139.2340, 25.5840, -1.1040 looks on a black background.

Color Contrast Check

Large Text (above 18pt) WCAG AA ✓ Pass

Any Text WCAG AA ✓ Pass

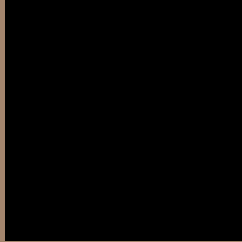
Large Text (above 18pt) WCAG AAA ✓ Pass

Any Text WCAG AAA × Fail

If you want to check with other color combinations, try the [Color Contrast Checker](#).

YIQ 139.2340, 25.5840, -1.1040

Background



This preview shows how black text looks on a background with the YIQ color 139.2340, 25.5840, -1.1040.



This preview shows how white text looks on a background with the YIQ color 139.2340, 25.5840,

-1.1040.

Color Blindness Simulation

Color vision deficiency is a very complex topic, and I could not describe the different causes any better than Wikipedia does, so if you want to learn more, you should check out their [article about color blindness](#).

Dichromacy



Original Color

139.2340, 25.5840, -1.1040

Protanopia

138.3140, 13.4350, -6.7010

Deuteranopia

138.9350, 24.9880, -1.3160



Tritanopia

141.2030, 18.8420, 10.9540

Trichromacy



Original Color

139.2340, 25.5840, -1.1040

Protanomaly

138.8200, 17.8820, -4.6940

Deuteranomaly

138.9350, 24.9880, -1.3160

Tritanomaly

140.2370, 21.5020, 6.7980

Monochromacy



Original Color

139.2340, 25.5840, -1.1040

Achromatopsia

139.0000, -0.0000, 0.0000

Achromatomaly

139.2630, 9.4450, -0.4670

CSS Examples

Text

The CSS property to change the color of the text to YIQ 139.2340, 25.5840, -1.1040 is called "color". The color property can be set on classes, ids or directly on the HTML element.

This example shows how text in the color `rgb(163, 133, 109)` looks like.

```
.text, #text, p{  
    color:rgb(163, 133, 109)  
}
```

If you want to add a text shadow in that color use the text-shadow property, you can generate a text shadow directly with our [CSS Text Shadow Generator](#).

Here you see how black text with a 4 pixel rgb(163, 133, 109) colored shadow looks like.

```
.shadow{ text-shadow: 4px 4px 2px rgb(163, 133, 109) }
```

Border

The CSS property to change the border of an element to YIQ 139.2340, 25.5840, -1.1040 is called "border". The border property can be set on classes, ids or directly on the HTML element.

This example shows the color as border, it can be applied via the CSS property "border" or "border-color".

```
.border, #border, table{ border:4px solid rgb(163, 133, 109) }
```


If only the border color should be changed use the property `border-color`.

```
.border{ border-color:rgb(163, 133, 109) }
```

If you want to add a box shadow in that color use:

Here you see how a box with a 4 pixel `rgb(163, 133, 109)` colored shadow looks like.

```
.boxshadow{ -moz-box-shadow:4px 4px 4px  
4px rgb(163, 133, 109); -webkit-box-  
shadow:4px 4px 4px 4px rgb(163, 133, 109);  
box-shadow:4px 4px 4px 4px rgb(163, 133,  
109) }
```

Background

The CSS property to change the background color of an element to YIQ 139.2340, 25.5840, -1.1040 is called "background". The background property can be set on classes, ids or directly on the HTML element.

```
.background, #background, body{  
background: rgb(163, 133, 109) }
```

If only the background color should be changed can be used:

```
.background{ background-color: rgb(163,  
133, 109) }
```

This example shows the color as background, it is applied via the CSS property "background".

To optimize and compress your CSS code, you can use our [online CSS compressor and optimizer](#) based on csstidy. If you want to create a linear or radial gradient as background or border, check our [CSS Gradient Generator](#).

Hey! You found this booklet interesting? Support Converting Colors with the new Membership Option!

The pro membership hides all ads, plus gives you double the colors in the color bucket, and more awesome pro features!

[Learn more, Memberships starting at \\$2.50/m!](#)

**Follow me
on Twitter!**

@ConvertingColor