

Converting Colors

YIQ(139.7340, 47.3630, -4.8370)

Have a look what the booklet for
YIQ(139.7340, 47.3630, -4.8370)
contains.

YIQ(139.7340, 47.3630, -4.8370)	3
<i>Conversions</i>	4
<i>Details</i>	6
<i>Harmonies</i>	12
<i>Previews</i>	24
<i>Color Blindness Simulation</i>	28
<i>CSS Examples</i>	31

Color

**YIQ(139.7340, 47.3630,
-4.8370)**

Conversions

Conversions Part 1

Format	Color
Hex	B6824F
RGB	182, 130, 79
RGB Percent	71%, 51%, 31%
CMY	0.2862, 0.4903, 0.6900
CMYK	0.00, 0.29, 0.57, 0.29
HSL	30°, 41%, 51%
HSV	30°, 57%, 71%
XYZ	28.6900, 26.4727, 11.0058
YIQ	139.7340, 47.3630, -4.8370

Conversions

Conversions Part 2

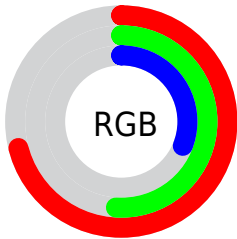
Format	Color
R_{YB}	182, 180, 79
Decimal	11960911
CIE _{Lab}	58.48, 14.36, 35.25
CIE _{LCh}	58, 38.065, 67.843
Yxy	26.4727, 0.4336, 0.4001
Android (android.graphics.Color)	4290150991 (0xFFB6824F)
YUV	139.7340, -29.9419, 37.0673
Hunter-Lab	51.4516, 9.4934, 23.3336

Details

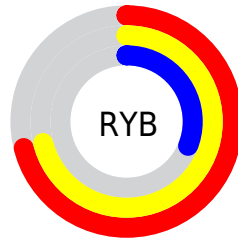
The YIQ color **139.7340, 47.3630, -4.8370** is a dark color, and the websafe version is hex **CC9966**. A complement of this color would be **121.2660, -47.3630, 4.8370**, and the grayscale version is **140.0000, 0.0000, 0.0000**.

A 20% lighter version of the original color is **193.8870, 51.3060, -4.7100**, and **88.8690, 42.5490, -5.6990** is the 20% darker color. If you saturate the color by 10%, you get **132.3990, 55.6160, -5.7280**, and if you desaturate by 10%, it is **147.0690, 39.1100, -3.9460**.

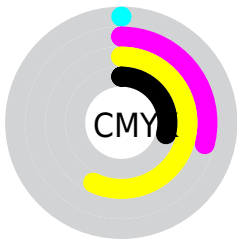
Distribution



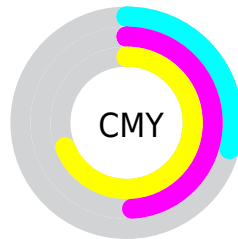
- Red (71%)
- Green (51%)
- Blue (31%)



- Red (71%)
- Yellow (71%)
- Blue (31%)



- Cyan (0%)
- Magenta (29%)
- Yellow (57%)
- Black (29%)



- Cyan (29%)
- Magenta (49%)
- Yellow (69%)

Brightness & Saturation Gradients

These gradients show how the YIQ color 139.7340, 47.3630, -4.8370 changes by changing the brightness by 10 percent. The first figure shows a shift by +10% for each color and the second figure -10%.

Similar to the brightness gradients but the following saturation gradients show a change of the YIQ color 139.7340, 47.3630, -4.8370 by changing the saturation by 10% instead.

■ 139.7340, 47.3630,
-4.8370

■ 139.7340, 47.3630,
-4.8370

■ 255.0000, -0.0000,
-0.0000

■ 113.9510, 45.2540,
-5.1620

■ 193.8870, 51.3060,
-4.7100

■ 88.8690, 42.5490,
-5.6990

■ 217.8860, 43.8790,
-7.7770

■ 64.5590, 40.4860,
-6.8580

■ 237.4000, 27.5120,
-14.0240

■ 42.9590, 33.6080,
-3.3520

■ 249.9840, 14.1240,
-13.6840

■ 22.8580, 23.8870,
2.1190

■ 253.1760, 5.1360,
-4.9760

■ 5.3820, 10.7280,
3.8160

■ 0.0000, 0.0000,

0.0000

■ 139.7340, 47.3630,
-4.8370

■ 139.7340, 47.3630,
-4.8370

■ 132.3990, 55.6160,
-5.7280

■ 147.0690, 39.1100,
-3.9460

■ 125.0640, 63.8690,
-6.6190

■ 154.4040, 30.8570,
-3.0550

■ 117.0280, 72.7180,
-7.2980

■ 162.4400, 22.0080,
-2.3760

■ 109.6930, 80.9710,
-8.1890

■ 169.7750, 13.7550,
-1.4850

■ 107.2480, 83.7220,
-8.4860

■ 177.1100, 5.5020,
-0.5940

■ 184.4450, -2.7510,
0.2970

■ 191.7800,
-11.0040, 1.1880

■ 199.8160,
-19.8530, 1.8670

■ 207.1510,
-28.1060, 2.7580

Harmonies

Analogous

The Analogous color harmony consists of three colors that are next to each other on the color wheel.



141.4660, 54.6500, 11.7860



139.7340, 47.3630, -4.8370



137.4230, 28.7050, -19.1270

Triad

The Triadic color harmony groups three colors that are evenly spaced from another and form a triangle on the color wheel.



139.7340, 47.3630, -4.8370



109.7320, -91.2790, -36.2950



144.0700, -5.0480, 25.4160

Complementary

The Complementary color scheme is a pair of colors which are on the opposite of each other on the color wheel.



139.7340, 47.3630, -4.8370



121.2660, -47.3630, 4.8370

Split Complementary

Split-complementary colors differ from the complementary color scheme. The scheme consists of three colors, the original color and two neighbors of the complement color.



137.3470, -42.9170, 12.3710



139.7340, 47.3630, -4.8370



112.2060, -101.0010, -25.2970

Square

The Square scheme is like the rectangle color scheme, but the four colors are evenly spaced on the color wheel.



139.7340, 47.3630, -4.8370



126.3950, -35.9860, -30.6580



117.3460, -95.0430, -12.1230



144.7010, 26.9080, 29.9800

Rectangle

The Rectangle color scheme consists of four colors that form a rectangle on the color wheel.



139.7340, 47.3630, -4.8370



134.8660, 11.1000, -24.9640



117.3460, -95.0430, -12.1230



142.7310, -17.3350, 22.3210

Sweetspot

The Sweet Spot groups the original color and five complimentary colors.



139.7340, 47.3630, -4.8370



220.7000, 18.3400, -1.9800



115.8390, 44.3750, 38.3190



110.2200, 11.0040, -1.1880



247.0000, -0.0000, -0.0000



120.0000, -0.0000, -0.0000

Same Dimension

The Same Dimension uses a secret algorithm to generate beautiful new colors.



139.7340, 47.3630, -4.8370



171.0990, 73.9560, -7.7080



169.0840, 33.6130, -30.9870



88.0390, 4.2640, -0.1840



91.8430, 71.8010, -7.1990



16.5900, 12.8380, -1.3860

Inverse Universe

The Inverse Universe completely reimagines the original color for something new.



121.2660, -47.3630, 4.8370



141.9010, -73.9560, 7.7080



91.9160, -33.6130, 30.9870



86.3740, -3.9890, 0.7070



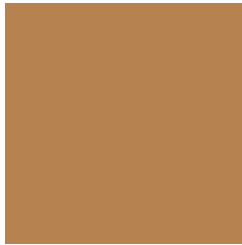
64.1570, -71.8010, 7.1990



11.4100, -12.8380, 1.3860

Previews

White Background



This preview shows how the YIQ color 139.7340, 47.3630, -4.8370 looks on a white background.

Color Contrast Check

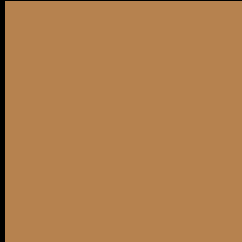
Large Text (above 18pt) WCAG AA ✓ Pass

Any Text WCAG AA × Fail

Large Text (above 18pt) WCAG AAA × Fail

Any Text WCAG AAA × Fail

Black Background



This preview shows how the YIQ color 139.7340, 47.3630, -4.8370 looks on a black background.

Color Contrast Check

Large Text (above 18pt) WCAG AA ✓ Pass

Any Text WCAG AA ✓ Pass

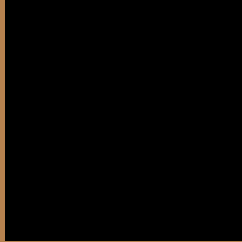
Large Text (above 18pt) WCAG AAA ✓ Pass

Any Text WCAG AAA × Fail

If you want to check with other color combinations, try the [Color Contrast Checker](#).

YIQ 139.7340, 47.3630, -4.8370

Background



This preview shows how black text looks on a background with the YIQ color 139.7340, 47.3630, -4.8370.



This preview shows how white text looks on a background with the YIQ color 139.7340, 47.3630, -4.8370.

-4.8370.

Color Blindness Simulation

Color vision deficiency is a very complex topic, and I could not describe the different causes any better than Wikipedia does, so if you want to learn more, you should check out their [article about color blindness](#).

Dichromacy



Original Color

139.7340, 47.3630, -4.8370

Protanopia

138.2750, 26.3660, -15.2820

Deuteranopia

138.9780, 40.6240, -9.3600



Tritanopia

143.5640, 34.0630, 15.9430

Trichromacy



Original Color

139.7340, 47.3630, -4.8370

Protanomaly

138.8030, 33.7470, -11.3810

Deuteranomaly

139.5870, 43.2830, -7.9890

Tritanomaly

142.1590, 39.3370, 8.4650

Monochromacy



Original Color

139.7340, 47.3630, -4.8370

Achromatopsia

140.0000, 0.0000, 0.0000

Achromatomaly

139.6290, 17.1020, -1.5700

CSS Examples

Text

The CSS property to change the color of the text to YIQ 139.7340, 47.3630, -4.8370 is called "color". The color property can be set on classes, ids or directly on the HTML element.

This example shows how text in the color `rgb(182, 130, 79)` looks like.

```
.text, #text, p{  
    color:rgb(182, 130, 79)  
}
```

If you want to add a text shadow in that color use the text-shadow property, you can generate a text shadow directly with our [CSS Text Shadow Generator](#).

Here you see how black text with a 4 pixel rgb(182, 130, 79) colored shadow looks like.

```
.shadow{ text-shadow: 4px 4px 2px rgb(182, 130, 79) }
```

Border

The CSS property to change the border of an element to YIQ 139.7340, 47.3630, -4.8370 is called "border". The border property can be set on classes, ids or directly on the HTML element.

This example shows the color as border, it can be applied via the CSS property "border" or "border-color".

```
.border, #border, table{ border:4px solid rgb(182, 130, 79) }
```


If only the border color should be changed use the property `border-color`.

```
.border{ border-color:rgb(182, 130, 79) }
```

If you want to add a box shadow in that color use:

Here you see how a box with a 4 pixel `rgb(182, 130, 79)` colored shadow looks like.

```
.boxshadow{ -moz-box-shadow:4px 4px 4px  
4px rgb(182, 130, 79); -webkit-box-  
shadow:4px 4px 4px 4px rgb(182, 130, 79);  
box-shadow:4px 4px 4px 4px rgb(182, 130,  
79) }
```

Background

The CSS property to change the background color of an element to YIQ 139.7340, 47.3630, -4.8370 is called "background". The background property can be set on classes, ids or directly on the HTML element.

```
.background, #background, body{  
background: rgb(182, 130, 79) }
```

If only the background color should be changed can be used:

```
.background{ background-color: rgb(182,  
130, 79) }
```

This example shows the color as background, it is applied via the CSS property "background".

To optimize and compress your CSS code, you can use our [online CSS compressor and optimizer](#) based on csstidy. If you want to create a linear or radial gradient as background or border, check our [CSS Gradient Generator](#).

Hey! You found this booklet interesting? Support Converting Colors with the new Membership Option!

The pro membership hides all ads, plus gives you double the colors in the color bucket, and more awesome pro features!

[Learn more, Memberships starting at \\$2.50/m!](#)

**Follow me
on Twitter!**

@ConvertingColor