

Converting Colors

YIQ(140.4340, 22.1450, 0.6490)

Have a look what the booklet for
YIQ(140.4340, 22.1450, 0.6490)
contains.

YIQ(140.4340, 22.1450, 0.6490)	3
<i>Conversions</i>	4
<i>Details</i>	6
<i>Harmonies</i>	12
<i>Previews</i>	24
<i>Color Blindness Simulation</i>	28
<i>CSS Examples</i>	31

Color

**YIQ(140.4340, 22.1450,
0.6490)**

Conversions

Conversions Part 1

Format	Color
Hex	A28675
RGB	162, 134, 117
RGB Percent	64%, 53%, 46%
CMY	0.3646, 0.4745, 0.5411
CMYK	0.00, 0.17, 0.28, 0.36
HSL	23°, 19%, 55%
HSV	23°, 28%, 64%
XYZ	26.6391, 26.0148, 20.4549
YIQ	140.4340, 22.1450, 0.6490

Conversions

Conversions Part 2

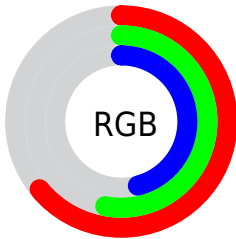
Format	Color
R_{YB}	162, 144, 117
Decimal	10651253
CIE _{Lab}	58.05, 8.03, 13.13
CIE _{LCh}	58, 15.389, 58.559
Yxy	26.0148, 0.3644, 0.3558
Android (android.graphics.Color)	4288841333 (0xFFA28675)
YUV	140.4340, -11.5530, 18.9134
Hunter-Lab	51.0047, 3.9700, 11.9256

Details

The YIQ color $140.4340, 22.1450, 0.6490$ is a dark color, and the websafe version is hex $CC9999$. A complement of this color would be $138.5660, -22.1450, -0.6490$, and the grayscale version is $141.0000, -0.0000, -0.0000$.

A 20% lighter version of the original color is $193.9180, 23.6580, 0.7620$, and $90.0640, 20.3110, 0.8470$ is the 20% darker color. If you saturate the color by 10%, you get $132.7400, 30.0310, 0.9030$, and if you desaturate by 10%, it is $148.1280, 14.2590, 0.3950$.

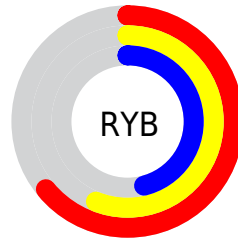
Distribution



Red (64%)

Green (53%)

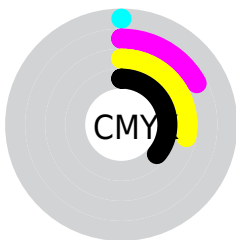
Blue (46%)



Red (64%)

Yellow (56%)

Blue (46%)

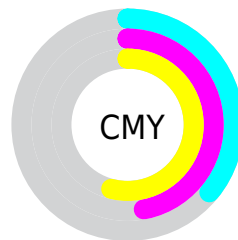


Cyan (0%)

Magenta (17%)

Yellow (28%)

Black (36%)



Cyan (36%)

Magenta (47%)

Yellow (54%)

Brightness & Saturation Gradients

These gradients show how the YIQ color 140.4340, 22.1450, 0.6490 changes by changing the brightness by 10 percent. The first figure shows a shift by +10% for each color and the second figure -10%.

Similar to the brightness gradients but the following saturation gradients show a change of the YIQ color 140.4340, 22.1450, 0.6490 by changing the saturation by 10% instead.

■ 140.4340, 22.1450,
0.6490

■ 140.4340, 22.1450,
0.6490

255.0000, -0.0000,
-0.0000

■ 114.8360, 20.9530,
0.2250

■ 193.9180, 23.6580,
0.7620

■ 90.0640, 20.3110,
0.8470

■ 222.1030, 24.5750,
0.6630

■ 66.4660, 19.1190,
0.4230

■ 244.4220, 13.2510,
-3.3650

■ 44.0960, 17.2850,
0.6210

254.7720, 0.6420,
-0.6220

■ 22.8140, 18.0190,
-1.6690

■ 0.0000, 0.0000,
0.0000

■ 140.4340, 22.1450,
0.6490

■ 140.4340, 22.1450,
0.6490

■ 132.7400, 30.0310,
0.9030

■ 148.1280, 14.2590,
0.3950

■ 125.0460, 37.9170,
1.1570

■ 155.8220, 6.3730,
0.1410

■ 117.2380, 46.1240,
1.1000

■ 163.6300, -1.8340,
0.1980

■ 109.5440, 54.0100,
1.3540

■ 171.3240, -9.7200,
-0.0560

■ 101.8500, 61.8960,
1.6080

■ 179.0180,
-17.6060, -0.3100

■ 93.5690, 70.0570,
2.3850

■ 187.2990,
-25.7670, -1.0870

■ 85.8750, 77.9430,
2.6390

■ 194.9930,
-33.6530, -1.3410

■ 84.2450, 79.7770,

■ 202.8010,

2.4410

-41.8600, -1.2840

■ 209.5830,
-47.1780, -4.0260

Harmonies

Analogous

The Analogous color harmony consists of three colors that are next to each other on the color wheel.



141.6070, 23.3360, 6.6000



140.4340, 22.1450, 0.6490



139.0370, 15.7730, -5.0190

Triad

The Triadic color harmony groups three colors that are evenly spaced from another and form a triangle on the color wheel.



140.4340, 22.1450, 0.6490



134.3130, -20.3550, -11.0670



140.5730, -5.6870, 9.4570

Complementary

The Complementary color scheme is a pair of colors which are on the opposite of each other on the color wheel.



140.4340, 22.1450, 0.6490



138.5660, -22.1450, -0.6490

Split Complementary

Split-complementary colors differ from the complementary color scheme. The scheme consists of three colors, the original color and two neighbors of the complement color.



138.4680, -18.7530, 3.9590



140.4340, 22.1450, 0.6490



134.4140, -27.8290, -7.7730

Square

The Square scheme is like the rectangle color scheme, but the four colors are evenly spaced on the color wheel.



140.4340, 22.1450, 0.6490



136.1310, -8.1590, -11.8310



136.1740, -26.9130, -2.3450



141.6840, 7.2420, 11.9300

Rectangle

The Rectangle color scheme consists of four colors that form a rectangle on the color wheel.



140.4340, 22.1450, 0.6490



137.9220, 8.6670, -8.3970



136.1740, -26.9130, -2.3450



140.1810, -10.4550, 7.7610

Sweetspot

The Sweet Spot groups the original color and five complimentary colors.



140.4340, 22.1450, 0.6490



203.6050, 8.4820, 0.4660



133.7610, 17.5110, 18.5590



101.6370, 5.4560, 0.2400



235.0000, 0.0000, -0.0000



107.0000, -0.0000, 0.0000

Same Dimension

The Same Dimension uses a secret algorithm to generate beautiful new colors.



140.4340, 22.1450, 0.6490



178.1920, 34.5700, 1.2420



153.3480, 16.0950, -10.8570



78.0390, 4.2640, -0.1840



75.6400, 71.2950, 1.9750



9.4910, 8.8030, 0.1550

Inverse Universe

The Inverse Universe completely reimagines the original color for something new.



138.5660, -22.1450, -0.6490



175.2210, -34.2950, -0.7190



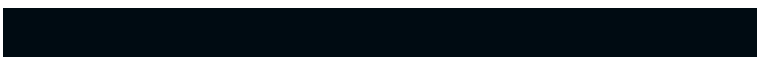
125.6520, -16.0950, 10.8570



77.5480, -4.5390, -0.3390



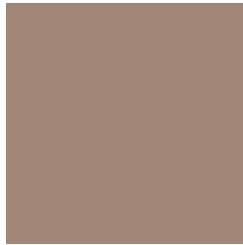
69.9470, -71.5700, -2.4980



8.5090, -8.8030, -0.1550

Previews

White Background



This preview shows how the YIQ color 140.4340, 22.1450, 0.6490 looks on a white background.

Color Contrast Check

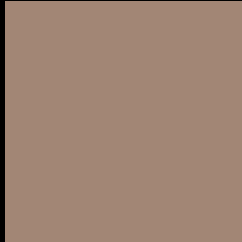
Large Text (above 18pt) WCAG AA ✓ Pass

Any Text WCAG AA × Fail

Large Text (above 18pt) WCAG AAA × Fail

Any Text WCAG AAA × Fail

Black Background



This preview shows how the YIQ color 140.4340, 22.1450, 0.6490 looks on a black background.

Color Contrast Check

Large Text (above 18pt) WCAG AA ✓ Pass

Any Text WCAG AA ✓ Pass

Large Text (above 18pt) WCAG AAA ✓ Pass

Any Text WCAG AAA × Fail

If you want to check with other color combinations, try the [Color Contrast Checker](#).

YIQ 140.4340, 22.1450, 0.6490

Background



This preview shows how black text looks on a background with the YIQ color 140.4340, 22.1450, 0.6490.



This preview shows how white text looks on a background with the YIQ color 140.4340, 22.1450,

0.6490.

Color Blindness Simulation

Color vision deficiency is a very complex topic, and I could not describe the different causes any better than Wikipedia does, so if you want to learn more, you should check out their [article about color blindness](#).

Dichromacy



Original Color

140.4340, 22.1450, 0.6490

Protanopia

139.2260, 10.8670, -4.2130

Deuteranopia

140.1350, 21.5490, 0.4370



Tritanopia

142.3060, 17.0540, 10.3180

Trichromacy



Original Color

140.4340, 22.1450, 0.6490

Protanomaly

139.4330, 14.7180, -2.4180

Deuteranomaly

140.1350, 21.5490, 0.4370

Tritanomaly

141.5680, 19.0720, 6.7840

Monochromacy



Original Color

140.4340, 22.1450, 0.6490

Achromatopsia

140.0000, 0.0000, 0.0000

Achromatomaly

140.3060, 7.8860, 0.2540

CSS Examples

Text

The CSS property to change the color of the text to YIQ 140.4340, 22.1450, 0.6490 is called "color". The color property can be set on classes, ids or directly on the HTML element.

This example shows how text in the color `rgb(162, 134, 117)` looks like.

```
.text, #text, p{  
    color:rgb(162, 134, 117)  
}
```

If you want to add a text shadow in that color use the text-shadow property, you can generate a text shadow directly with our [CSS Text Shadow Generator](#).

Here you see how black text with a 4 pixel rgb(162, 134, 117) colored shadow looks like.

```
.shadow{ text-shadow: 4px 4px 2px rgb(162, 134, 117) }
```

Border

The CSS property to change the border of an element to YIQ 140.4340, 22.1450, 0.6490 is called "border". The border property can be set on classes, ids or directly on the HTML element.

This example shows the color as border, it can be applied via the CSS property "border" or "border-color".

```
.border, #border, table{ border:4px solid rgb(162, 134, 117) }
```


If only the border color should be changed use the property `border-color`.

```
.border{ border-color:rgb(162, 134, 117) }
```

If you want to add a box shadow in that color use:

Here you see how a box with a 4 pixel `rgb(162, 134, 117)` colored shadow looks like.

```
.boxshadow{ -moz-box-shadow:4px 4px 4px  
4px rgb(162, 134, 117); -webkit-box-  
shadow:4px 4px 4px 4px rgb(162, 134, 117);  
box-shadow:4px 4px 4px 4px rgb(162, 134,  
117) }
```

Background

The CSS property to change the background color of an element to YIQ 140.4340, 22.1450, 0.6490 is called "background". The background property can be set on classes, ids or directly on the HTML element.

```
.background, #background, body{  
background: rgb(162, 134, 117) }
```

If only the background color should be changed can be used:

```
.background{ background-color: rgb(162,  
134, 117) }
```

This example shows the color as background, it is applied via the CSS property "background".

To optimize and compress your CSS code, you can use our [online CSS compressor and optimizer](#) based on csstidy. If you want to create a linear or radial gradient as background or border, check our [CSS Gradient Generator](#).

Hey! You found this booklet interesting? Support Converting Colors with the new Membership Option!

The pro membership hides all ads, plus gives you double the colors in the color bucket, and more awesome pro features!

[Learn more, Memberships starting at \\$2.50/m!](#)

**Follow me
on Twitter!**

@ConvertingColor