

Converting Colors

YIQ(141.2040, 26.2690, 14.0210)

Have a look what the booklet for
YIQ(141.2040, 26.2690, 14.0210)
contains.

YIQ(141.2040, 26.2690, 14.0210)	3
<i>Conversions</i>	4
<i>Details</i>	6
<i>Harmonies</i>	12
<i>Previews</i>	24
<i>Color Blindness Simulation</i>	28
<i>CSS Examples</i>	31

Color

**YIQ(141.2040, 26.2690,
14.0210)**

Conversions

Conversions Part 1

Format	Color
Hex	AF7D88
RGB	175, 125, 136
RGB Percent	69%, 49%, 53%
CMY	0.3136, 0.5099, 0.4666
CMYK	0.00, 0.29, 0.22, 0.31
HSL	347°, 24%, 59%
HSV	347°, 29%, 69%
XYZ	29.4630, 25.5579, 26.6819
YIQ	141.2040, 26.2690, 14.0210

Conversions

Conversions Part 2

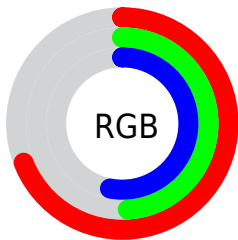
Format	Color
R _Y B	175, 125, 136
Decimal	11500936
CIE Lab	57.61, 21.08, 1.77
CIE LCh	58, 21.157, 4.791
Yxy	25.5579, 0.3606, 0.3128
Android (android.graphics.Color)	4289691016 (0xFFAF7D88)
YUV	141.2040, -2.5656, 29.6391
Hunter-Lab	50.5548, 15.5579, 4.0961

Details

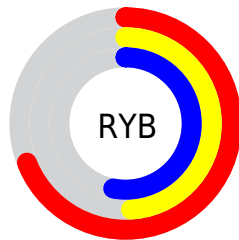
The YIQ color $141.2040, 26.2690, 14.0210$ is a dark color, and the websafe version is hex 996666 . A complement of this color would be $158.7960, -26.2690, -14.0210$, and the grayscale version is $141.0000, -0.0000, -0.0000$.

A 20% lighter version of the original color is $195.1010, 28.0570, 14.6570$, and $90.0080, 23.8850, 13.1730$ is the 20% darker color. If you saturate the color by 10%, you get $129.0420, 35.7130, 19.0810$, and if you desaturate by 10%, it is $152.7790, 17.1000, 9.4840$.

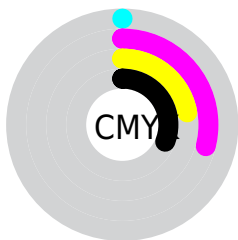
Distribution



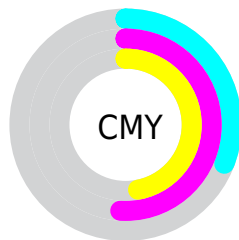
- Red (69%)
- Green (49%)
- Blue (53%)



- Red (69%)
- Yellow (49%)
- Blue (53%)



- Cyan (0%)
- Magenta (29%)
- Yellow (22%)
- Black (31%)



- Cyan (31%)
- Magenta (51%)
- Yellow (47%)

Brightness & Saturation Gradients

These gradients show how the YIQ color 141.2040, 26.2690, 14.0210 changes by changing the brightness by 10 percent. The first figure shows a shift by +10% for each color and the second figure -10%.

Similar to the brightness gradients but the following saturation gradients show a change of the YIQ color 141.2040, 26.2690, 14.0210 by changing the saturation by 10% instead.

■ 141.2040, 26.2690,
14.0210

■ 141.2040, 26.2690,
14.0210

■ 255.0000, -0.0000,
-0.0000

■ 115.6060, 25.0770,
13.5970

■ 195.1010, 28.0570,
14.6570

■ 90.0080, 23.8850,
13.1730

■ 221.9050, 25.6730,
13.8090

■ 66.4100, 22.6930,
12.7490

■ 241.5330, 8.9850,
7.8730

■ 43.5130, 20.9050,
12.1130

■ 21.1430, 19.0710,
12.3110

■ 6.8770, 13.7080,
4.8760

■ 0.0000, 0.0000,

0.0000

■ 141.2040, 26.2690,
14.0210

■ 141.2040, 26.2690,
14.0210

■ 129.0420, 35.7130,
19.0810

■ 152.7790, 17.1000,
9.4840

■ 117.5810, 44.5610,
23.9290

■ 164.8270, 7.9770,
4.1130

■ 105.4190, 54.0050,
28.9890

■ 176.4020, -1.1920,
-0.4240

■ 93.8440, 63.1740,
33.5260

■ 188.5640,
-10.6360, -5.4840

■ 81.7960, 72.2970,
38.8970

■ 200.0250,
-19.4840, -10.3320

■ 70.2210, 81.4660,
43.4340

■ 212.1870,
-28.9280, -15.3920

■ 58.1730, 90.5890,
48.8050

■ 224.3490,
-38.3720, -20.4520

■ 56.7710, 91.7810,
49.2290

■ 229.9400,
-44.4700, -20.0700

■ 231.0800,
-47.6800, -16.9600

Harmonies

Analogous

The Analogous color harmony consists of three colors that are next to each other on the color wheel.



141.4400, 13.9810, 16.4530



141.2040, 26.2690, 14.0210



140.3260, 31.4970, 7.3770

Triad

The Triadic color harmony groups three colors that are evenly spaced from another and form a triangle on the color wheel.



141.2040, 26.2690, 14.0210



135.4110, 2.6160, -14.3760



133.3130, -37.5500, -2.3020

Complementary

The Complementary color scheme is a pair of colors which are on the opposite of each other on the color wheel.



141.2040, 26.2690, 14.0210



158.7960, -26.2690, -14.0210

Split Complementary

Split-complementary colors differ from the complementary color scheme. The scheme consists of three colors, the original color and two neighbors of the complement color.



130.1180, -41.6750, -10.1470



141.2040, 26.2690, 14.0210



132.4890, -15.2190, -16.0430

Square

The Square scheme is like the rectangle color scheme, but the four colors are evenly spaced on the color wheel.



141.2040, 26.2690, 14.0210



137.1850, 18.1120, -8.8640



130.4470, -32.5960, -14.9960



137.4230, -22.8800, 7.1680

Rectangle

The Rectangle color scheme consists of four colors that form a rectangle on the color wheel.



141.2040, 26.2690, 14.0210



139.2670, 29.9850, 1.7370



130.4470, -32.5960, -14.9960



132.0630, -39.8420, -4.8180

Sweetspot

The Sweet Spot groups the original color and five complimentary colors.



141.2040, 26.2690, 14.0210



213.4360, 10.6360, 5.4840



142.0620, 6.5980, 23.6060



106.2290, 6.7850, 3.6890



242.0000, -0.0000, 0.0000



115.0000, -0.0000, 0.0000

Same Dimension

The Same Dimension uses a secret algorithm to generate beautiful new colors.



141.2040, 26.2690, 14.0210



174.9610, 40.4350, 21.6110



147.5810, 26.2250, 3.8010



80.9190, 4.7220, 2.5300



48.6120, 78.8070, 42.0630



7.4470, 12.1030, 6.4310

Inverse Universe

The Inverse Universe completely reimagines the original color for something new.



141.2040, 26.2690, 14.0210



174.9610, 40.4350, 21.6110



152.4190, -26.2250, -3.8010



80.9190, 4.7220, 2.5300



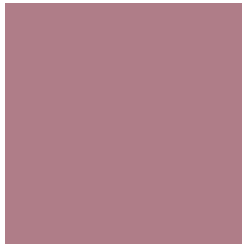
48.6120, 78.8070, 42.0630



7.4470, 12.1030, 6.4310

Previews

White Background



This preview shows how the YIQ color 141.2040, 26.2690, 14.0210 looks on a white background.

Color Contrast Check

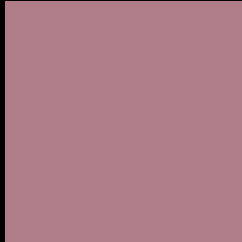
Large Text (above 18pt) WCAG AA ✓ Pass

Any Text WCAG AA × Fail

Large Text (above 18pt) WCAG AAA × Fail

Any Text WCAG AAA × Fail

Black Background



This preview shows how the YIQ color 141.2040, 26.2690, 14.0210 looks on a black background.

Color Contrast Check

Large Text (above 18pt) WCAG AA ✓ Pass

Any Text WCAG AA ✓ Pass

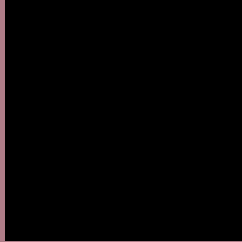
Large Text (above 18pt) WCAG AAA ✓ Pass

Any Text WCAG AAA × Fail

If you want to check with other color combinations, try the [Color Contrast Checker](#).

YIQ 141.2040, 26.2690, 14.0210

Background



This preview shows how black text looks on a background with the YIQ color 141.2040, 26.2690, 14.0210.



This preview shows how white text looks on a background with the YIQ color 141.2040, 26.2690,

Color Blindness Simulation

Color vision deficiency is a very complex topic, and I could not describe the different causes any better than Wikipedia does, so if you want to learn more, you should check out their [article about color blindness](#).

Dichromacy



Original Color

141.2040, 26.2690, 14.0210

Protanopia

139.1680, -0.4130, 1.9790

Deuteranopia

139.9800, 11.9200, 4.2400



Tritanopia

141.0900, 26.5900, 13.7100

Trichromacy



Original Color

141.2040, 26.2690, 14.0210

Protanomaly

139.7780, 9.6730, 6.4170

Deuteranomaly

140.7250, 17.1920, 7.8160

Tritanomaly

141.0900, 26.5900, 13.7100

Monochromacy



Original Color

141.2040, 26.2690, 14.0210

Achromatopsia

141.0000, -0.0000, -0.0000

Achromatomaly

140.8380, 9.4440, 5.0600

CSS Examples

Text

The CSS property to change the color of the text to YIQ 141.2040, 26.2690, 14.0210 is called "color". The color property can be set on classes, ids or directly on the HTML element.

This example shows how text in the color `rgb(175, 125, 136)` looks like.

```
.text, #text, p{  
    color:rgb(175, 125, 136)  
}
```

If you want to add a text shadow in that color use the text-shadow property, you can generate a text shadow directly with our [CSS Text Shadow Generator](#).

Here you see how black text with a 4 pixel rgb(175, 125, 136) colored shadow looks like.

```
.shadow{ text-shadow: 4px 4px 2px rgb(175, 125, 136) }
```

Border

The CSS property to change the border of an element to YIQ 141.2040, 26.2690, 14.0210 is called "border". The border property can be set on classes, ids or directly on the HTML element.

This example shows the color as border, it can be applied via the CSS property "border" or "border-color".

```
.border, #border, table{ border:4px solid rgb(175, 125, 136) }
```


If only the border color should be changed use the property `border-color`.

```
.border{ border-color:rgb(175, 125, 136) }
```

If you want to add a box shadow in that color use:

Here you see how a box with a 4 pixel `rgb(175, 125, 136)` colored shadow looks like.

```
.boxshadow{ -moz-box-shadow:4px 4px 4px  
4px rgb(175, 125, 136); -webkit-box-  
shadow:4px 4px 4px 4px rgb(175, 125, 136);  
box-shadow:4px 4px 4px 4px rgb(175, 125,  
136) }
```

Background

The CSS property to change the background color of an element to YIQ 141.2040, 26.2690, 14.0210 is called "background". The background property can be set on classes, ids or directly on the HTML element.

```
.background, #background, body{  
background: rgb(175, 125, 136) }
```

If only the background color should be changed can be used:

```
.background{ background-color: rgb(175,  
125, 136) }
```

This example shows the color as background, it is applied via the CSS property "background".

To optimize and compress your CSS code, you can use our [online CSS compressor and optimizer](#) based on csstidy. If you want to create a linear or radial gradient as background or border, check our [CSS Gradient Generator](#).

Hey! You found this booklet interesting? Support Converting Colors with the new Membership Option!

The pro membership hides all ads, plus gives you double the colors in the color bucket, and more awesome pro features!

[Learn more, Memberships starting at \\$2.50/m!](#)

**Follow me
on Twitter!**

@ConvertingColor