

# Converting Colors

YIQ(141.2450, 36.2190, 9.9070)

Have a look what the booklet for  
YIQ(141.2450, 36.2190, 9.9070)  
contains.

<b>YIQ(141.2450, 36.2190, 9.9070)</b> .....	3
<b><i>Conversions</i></b> .....	4
<b><i>Details</i></b> .....	6
<b><i>Harmonies</i></b> .....	12
<b><i>Previews</i></b> .....	24
<b><i>Color Blindness Simulation</i></b> .....	28
<b><i>CSS Examples</i></b> .....	31

# Color

**YIQ(141.2450, 36.2190,  
9.9070)**

# Conversions

## Conversions Part 1

<b>Format</b>	<b>Color</b>
Hex	B67D76
RGB	182, 125, 118
RGB Percent	71%, 49%, 46%
CMY	0.2861, 0.5099, 0.5371
CMYK	0.00, 0.31, 0.35, 0.29
HSL	7°, 30%, 59%
HSV	7°, 35%, 71%
XYZ	29.9022, 25.9192, 20.5783
YIQ	141.2450, 36.2190, 9.9070

# Conversions

## Conversions Part 2

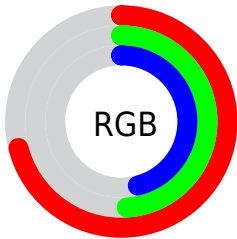
<b>Format</b>	<b>Color</b>
<b>R<sub>YB</sub></b>	182, 126, 118
Decimal	11959670
CIE <sub>Lab</sub>	57.96, 21.27, 12.74
CIE <sub>LCh</sub>	58, 24.793, 30.929
Yxy	25.9192, 0.3914, 0.3393
Android (android.graphics.Color)	4290149750 (0xFFB67D76)
YUV	141.2450, -11.4598, 35.7421
Hunter-Lab	50.9109, 15.7466, 11.6725

# Details

The YIQ color **141.2450, 36.2190, 9.9070** is a dark color, and the websafe version is hex **996666**. A complement of this color would be **158.7550, -36.2190, -9.9070**, and the grayscale version is **141.0000, -0.0000, -0.0000**.

A 20% lighter version of the original color is **195.3270, 38.9240, 10.4440**, and **89.9780, 32.5970, 9.4690** is the 20% darker color. If you saturate the color by 10%, you get **129.8010, 46.3970, 12.6770**, and if you desaturate by 10%, it is **152.6890, 26.0410, 7.1370**.

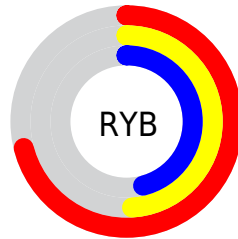
# Distribution



Red (71%)

Green (49%)

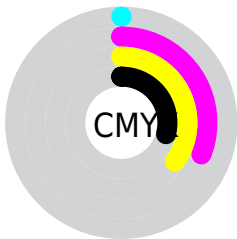
Blue (46%)



Red (71%)

Yellow (49%)

Blue (46%)

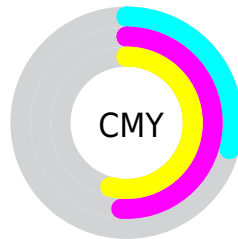


Cyan (0%)

Magenta (31%)

Yellow (35%)

Black (29%)



Cyan (29%)

Magenta (51%)


Yellow (54%)

# Brightness & Saturation Gradients

These gradients show how the YIQ color 141.2450, 36.2190, 9.9070 changes by changing the brightness by 10 percent. The first figure shows a shift by +10% for each color and the second figure -10%.


Similar to the brightness gradients but the following saturation gradients show a change of the YIQ color 141.2450, 36.2190, 9.9070 by changing the saturation by 10% instead.





 141.2450, 36.2190,  
9.9070


 141.2450, 36.2190,  
9.9070


255.0000, -0.0000,  
-0.0000


 115.3480, 34.4310,  
9.2710


 195.3270, 38.9240,  
10.4440

 89.9780, 32.5970,  
9.4690


 219.6250, 32.0930,  
7.5890


 66.0810, 30.8090,  
8.8330

 239.2530, 15.4050,  
1.6530

 43.1130, 27.7830,  
8.6070

254.8860, 0.3210,  
-0.3110

 19.9450, 28.1960,  
6.6280

 7.5890, 14.5790,  
5.6110

 0.0000, 0.0000,

0.0000

■ 141.2450, 36.2190,  
9.9070

■ 141.2450, 36.2190,  
9.9070

■ 129.8010, 46.3970,  
12.6770

■ 152.6890, 26.0410,  
7.1370

■ 118.3570, 56.5750,  
15.4470

■ 164.1330, 15.8630,  
4.3670

■ 106.2120, 67.3490,  
18.4290

■ 176.2780, 5.0890,  
1.3850

■ 94.7680, 77.5270,  
21.1990

■ 187.7220, -5.0890,  
-1.3850

■ 83.3240, 87.7050,  
23.9690

■ 199.1660,  
-15.2670, -4.1550

■ 71.8800, 97.8830,  
26.7390

■ 210.6100,  
-25.4450, -6.9250

■ 66.1580, 102.9720,  
28.1240

■ 222.6410,  
-35.8980, -10.2180

■ 233.1730,  
-43.5080, -15.4760

# Harmonies

## Analogous

The Analogous color harmony consists of three colors that are next to each other on the color wheel.



142.1660, 29.4320, 17.2720



141.2450, 36.2190, 9.9070



139.9530, 33.7450, -0.3270

# Triad

The Triadic color harmony groups three colors that are evenly spaced from another and form a triangle on the color wheel.



141.2450, 36.2190, 9.9070



132.6090, -15.6770, -18.7570



137.0030, -30.4450, 6.6030

# Complementary

The Complementary color scheme is a pair of colors which are on the opposite of each other on the color wheel.



141.2450, 36.2190, 9.9070



158.7550, -36.2190, -9.9070

# Split Complementary

Split-complementary colors differ from the complementary color scheme. The scheme consists of three colors, the original color and two neighbors of the complement color.



131.2840, -47.7740, -4.2380



141.2450, 36.2190, 9.9070



129.3000, -36.6760, -18.1480

# Square

The Square scheme is like the rectangle color scheme, but the four colors are evenly spaced on the color wheel.



141.2450, 36.2190, 9.9070



135.9120, 5.4590, -16.3410



128.2200, -50.8900, -13.8500



140.8920, -7.8430, 15.4930



# Rectangle

The Rectangle color scheme consists of four colors that form a rectangle on the color wheel.



141.2450, 36.2190, 9.9070



139.0290, 27.4190, -6.8290



128.2200, -50.8900, -13.8500



135.1870, -36.9550, 3.4370

# Sweetspot

The Sweet Spot groups the original color and five complimentary colors.



141.2450, 36.2190, 9.9070



220.5350, 14.6710, 3.9430



143.7480, 19.5260, 31.6060



109.9580, 8.9860, 2.3460



247.0000, -0.0000, -0.0000



120.0000, -0.0000, -0.0000



# Same Dimension

The Same Dimension uses a secret algorithm to generate beautiful new colors.



141.2450, 36.2190, 9.9070



173.4710, 56.2540, 15.7580



159.4420, 27.6940, -6.3060



86.2780, 5.0890, 1.3850



56.6230, 88.3010, 24.1810



10.1330, 15.8630, 4.3670



# Inverse Universe

The Inverse Universe completely reimagines the original color for something new.



158.7550, -36.2190, -9.9070



200.9420, -55.9790, -15.2350



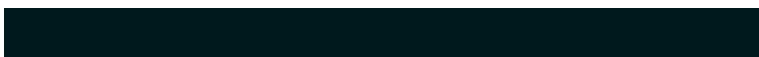
140.5580, -27.6940, 6.3060



88.7220, -5.0890, -1.3850



99.3770, -88.3010, -24.1810

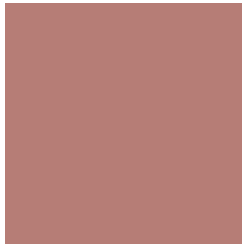


17.8670, -15.8630, -4.3670



# Previews

## White Background



This preview shows how the YIQ color 141.2450, 36.2190, 9.9070 looks on a white background.

## Color Contrast Check

Large Text (above 18pt) WCAG AA ✓ Pass

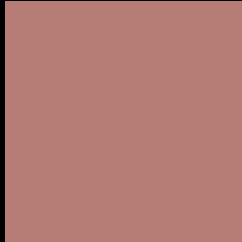
Any Text WCAG AA × Fail

Large Text (above 18pt) WCAG AAA × Fail

Any Text WCAG AAA × Fail



# Black Background



This preview shows how the YIQ color 141.2450, 36.2190, 9.9070 looks on a black background.

## Color Contrast Check

Large Text (above 18pt) WCAG AA ✓ Pass

Any Text WCAG AA ✓ Pass

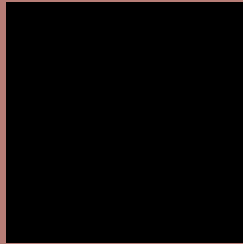
Large Text (above 18pt) WCAG AAA ✓ Pass

Any Text WCAG AAA × Fail

If you want to check with other color combinations, try the [Color Contrast Checker](#).

**YIQ 141.2450, 36.2190, 9.9070**

## **Background**



This preview shows how black text looks on a background with the YIQ color 141.2450, 36.2190, 9.9070.



This preview shows how white text looks on a background with the YIQ color 141.2450, 36.2190,

9.9070.

# Color Blindness Simulation

Color vision deficiency is a very complex topic, and I could not describe the different causes any better than Wikipedia does, so if you want to learn more, you should check out their [article about color blindness](#).

## Dichromacy



### Original Color

141.2450, 36.2190, 9.9070

### Protanopia

139.1980, 8.0700, -3.0820

### Deuteranopia

140.0210, 21.8700, 0.1260



## Tritanopia

141.9660, 32.8710, 15.5190

# Trichromacy



## Original Color

141.2450, 36.2190, 9.9070

## Protanomaly

139.8080, 18.1560, 1.3560

## Deuteranomaly

140.7660, 27.1420, 3.7020

## Tritanomaly

141.9830, 34.2010, 13.4410

# Monochromacy



## Original Color

141.2450, 36.2190, 9.9070

## Achromatopsia

141.0000, -0.0000, -0.0000

## Achromatomaly

141.0510, 13.1580, 3.8300

# CSS Examples

## Text

The CSS property to change the color of the text to YIQ 141.2450, 36.2190, 9.9070 is called "color". The color property can be set on classes, ids or directly on the HTML element.

This example shows how text in the color `rgb(182, 125, 118)` looks like.

```
.text, #text, p{  
    color:rgb(182, 125, 118)  
}
```

If you want to add a text shadow in that color use the text-shadow property, you can generate a text shadow directly with our [CSS Text Shadow Generator](#).

Here you see how black text with a 4 pixel rgb(182, 125, 118) colored shadow looks like.

```
.shadow{ text-shadow: 4px 4px 2px rgb(182, 125, 118) }
```

## Border

The CSS property to change the border of an element to YIQ 141.2450, 36.2190, 9.9070 is called "border". The border property can be set on classes, ids or directly on the HTML element.

This example shows the color as border, it can be applied via the CSS property "border" or "border-color".

```
.border, #border, table{ border:4px solid rgb(182, 125, 118) }
```



If only the border color should be changed use the property `border-color`.

```
.border{ border-color:rgb(182, 125, 118) }
```

If you want to add a box shadow in that color use:

Here you see how a box with a 4 pixel `rgb(182, 125, 118)` colored shadow looks like.

```
.boxshadow{ -moz-box-shadow:4px 4px 4px  
4px rgb(182, 125, 118); -webkit-box-  
shadow:4px 4px 4px 4px rgb(182, 125, 118);  
box-shadow:4px 4px 4px 4px rgb(182, 125,  
118) }
```

# Background

The CSS property to change the background color of an element to YIQ 141.2450, 36.2190, 9.9070 is called "background". The background property can be set on classes, ids or directly on the HTML element.

```
.background, #background, body{  
background: rgb(182, 125, 118) }
```

If only the background color should be changed can be used:

```
.background{ background-color: rgb(182,  
125, 118) }
```

This example shows the color as background, it is applied via the CSS property "background".

To optimize and compress your CSS code, you can use our [online CSS compressor and optimizer](#) based on csstidy. If you want to create a linear or radial gradient as background or border, check our [CSS Gradient Generator](#).

Hey! You found this booklet interesting? Support Converting Colors with the new Membership Option!

The pro membership hides all ads, plus gives you double the colors in the color bucket, and more awesome pro features!

**[Learn more, Memberships starting at \\$2.50/m!](#)**

**Follow me  
on Twitter!**

@ConvertingColor