

Converting Colors

YIQ(141.2590, 51.9400, 38.8840)

Have a look what the booklet for
YIQ(141.2590, 51.9400, 38.8840)
contains.

YIQ(141.2590, 51.9400, 38.8840)	3
<i>Conversions</i>	4
<i>Details</i>	6
<i>Harmonies</i>	12
<i>Previews</i>	24
<i>Color Blindness Simulation</i>	28
<i>CSS Examples</i>	31

Color

**YIQ(141.2590, 51.9400,
38.8840)**

Conversions

Conversions Part 1

Format	Color
Hex	D76696
RGB	215, 102, 150
RGB Percent	84%, 40%, 59%
CMY	0.1566, 0.6002, 0.4116
CMYK	0.00, 0.53, 0.30, 0.16
HSL	334°, 59%, 62%
HSV	334°, 53%, 84%
XYZ	38.3019, 26.1554, 31.9021
YIQ	141.2590, 51.9400, 38.8840

Conversions

Conversions Part 2

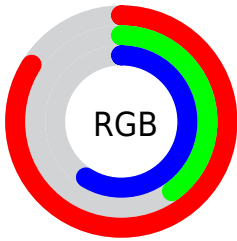
Format	Color
R _Y B	215, 102, 150
Decimal	14116502
CIE Lab	58.18, 49.56, -4.93
CIE LCh	58, 49.800, 354.316
Yxy	26.1554, 0.3975, 0.2714
Android (android.graphics.Color)	4292306582 (0xFFD76696)
YUV	141.2590, 4.3093, 64.6709
Hunter-Lab	51.1424, 44.1843, -1.1849

Details

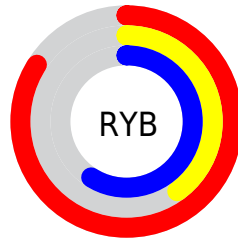
The YIQ color **141.2590, 51.9400, 38.8840** is a light color, and the websafe version is hex **CC6699**. A complement of this color would be **175.7410, -51.9400, -38.8840**, and the grayscale version is **141.0000, -0.0000, -0.0000**.

A 20% lighter version of the original color is **191.0730, 43.5960, 35.9160**, and **86.4050, 48.5930, 38.9690** is the 20% darker color. If you saturate the color by 10%, you get **126.9770, 61.8420, 46.6580**, and if you desaturate by 10%, it is **154.9540, 42.3130, 31.6330**.

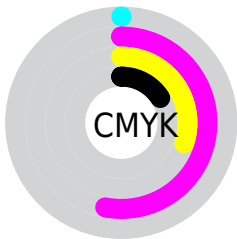
Distribution



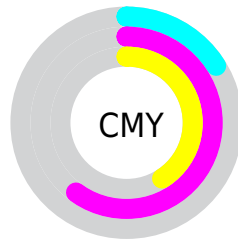
- Red (84%)
- Green (40%)
- Blue (59%)



- Red (84%)
- Yellow (40%)
- Blue (59%)



- Cyan (0%)
- Magenta (53%)
- Yellow (30%)
- Black (16%)



- Cyan (16%)
- Magenta (60%)
- Yellow (41%)

Brightness & Saturation Gradients

These gradients show how the YIQ color 141.2590, 51.9400, 38.8840 changes by changing the brightness by 10 percent. The first figure shows a shift by +10% for each color and the second figure -10%.

Similar to the brightness gradients but the following saturation gradients show a change of the YIQ color 141.2590, 51.9400, 38.8840 by changing the saturation by 10% instead.

■ 141.2590, 51.9400,
38.8840

■ 141.2590, 51.9400,
38.8840

255.0000, -0.0000,
-0.0000

■ 113.7750, 50.4270,
38.7710

■ 191.0730, 43.5960,
35.9160

■ 86.4050, 48.5930,
38.9690

■ 210.7010, 26.9080,
29.9800

■ 56.0400, 48.3630,
43.1390

■ 230.3460, 11.5500,
21.9660

■ 36.2410, 43.1830,
37.8950

■ 247.3690, 3.5750,
6.7990

■ 25.7740, 33.8320,
25.6400

■ 15.9330, 28.4700,
12.6780

■ 0.0000, 0.0000,

0.0000

■ 141.2590, 51.9400,
38.8840

■ 141.2590, 51.9400,
38.8840

■ 126.9770, 61.8420,
46.6580

■ 154.9540, 42.3130,
31.6330

■ 113.1680, 71.7900,
53.5980

■ 169.3500, 32.0900,
24.1700

■ 98.8860, 81.6920,
61.3720

■ 183.0450, 22.4630,
16.9190

■ 85.1910, 91.3190,
68.6230

■ 197.4410, 12.2400,
9.4560

■ 74.6590, 98.9290,
73.8810

■ 211.1360, 2.6130,
2.2050

■ 225.4180, -7.2890,
-5.5690

■ 239.8140,
-17.5120, -13.0320

■ 242.3560,
-21.9140, -10.3460

■ 243.0400,
-23.8400, -8.4800

Harmonies

Analogous

The Analogous color harmony consists of three colors that are next to each other on the color wheel.



144.0070, 17.5990, 38.9990



141.2590, 51.9400, 38.8840



138.9120, 68.4940, 25.2140

Triad

The Triadic color harmony groups three colors that are evenly spaced from another and form a triangle on the color wheel.



141.2590, 51.9400, 38.8840



131.7170, 18.5290, -32.9510



116.0990, -110.5850, -16.8010

Complementary

The Complementary color scheme is a pair of colors which are on the opposite of each other on the color wheel.



141.2590, 51.9400, 38.8840



175.7410, -51.9400, -38.8840

Split Complementary

Split-complementary colors differ from the complementary color scheme. The scheme consists of three colors, the original color and two neighbors of the complement color.



114.3430, -100.1290, -30.0890



141.2590, 51.9400, 38.8840



124.2030, -26.9980, -39.3660

Square

The Square scheme is like the rectangle color scheme, but the four colors are evenly spaced on the color wheel.



141.2590, 51.9400, 38.8840



135.9600, 49.0620, -19.1140



109.3270, -86.0050, -43.7730



112.0530, -112.9710, -6.5950

Rectangle

The Rectangle color scheme consists of four colors that form a rectangle on the color wheel.



141.2590, 51.9400, 38.8840



138.6540, 68.6800, 10.8240



109.3270, -86.0050, -43.7730



116.1330, -107.9250, -20.9570

Sweetspot

The Sweet Spot groups the original color and five complimentary colors.



141.2590, 51.9400, 38.8840



228.3110, 18.6580, 14.2900



134.0180, 1.8710, 48.7110



111.7290, 11.3690, 8.7210



0.0000, 0.0000, 0.0000



128.0000, -0.0000, -0.0000

Same Dimension

The Same Dimension uses a secret algorithm to generate beautiful new colors.



141.2590, 51.9400, 38.8840



150.0050, 73.8070, 55.5910



140.4830, 65.1480, 19.7720



99.8590, 4.9510, 3.8870



59.4510, 78.4830, 58.9550



14.9090, 19.8500, 14.7140

Inverse Universe

The Inverse Universe completely reimagines the original color for something new.



141.2590, 51.9400, 38.8840



150.0050, 73.8070, 55.5910



177.1040, -65.4230, -20.2950



99.8590, 4.9510, 3.8870



59.4510, 78.4830, 58.9550



14.9090, 19.8500, 14.7140

Previews

White Background



This preview shows how the YIQ color 141.2590, 51.9400, 38.8840 looks on a white background.

Color Contrast Check

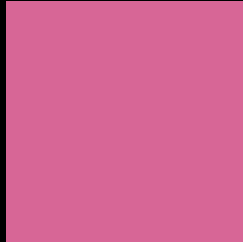
Large Text (above 18pt) WCAG AA ✓ Pass

Any Text WCAG AA × Fail

Large Text (above 18pt) WCAG AAA × Fail

Any Text WCAG AAA × Fail

Black Background



This preview shows how the YIQ color 141.2590, 51.9400, 38.8840 looks on a black background.

Color Contrast Check

Large Text (above 18pt) WCAG AA ✓ Pass

Any Text WCAG AA ✓ Pass

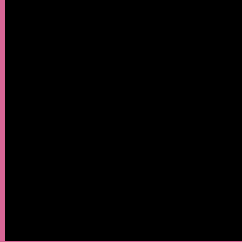
Large Text (above 18pt) WCAG AAA ✓ Pass

Any Text WCAG AAA × Fail

If you want to check with other color combinations, try the [Color Contrast Checker](#).

YIQ 141.2590, 51.9400, 38.8840

Background



This preview shows how black text looks on a background with the YIQ color 141.2590, 51.9400, 38.8840.



This preview shows how white text looks on a background with the YIQ color 141.2590, 51.9400,

Color Blindness Simulation

Color vision deficiency is a very complex topic, and I could not describe the different causes any better than Wikipedia does, so if you want to learn more, you should check out their [article about color blindness](#).

Dichromacy



Original Color

141.2590, 51.9400, 38.8840

Protanopia

140.8970, -15.4070, 9.4010

Deuteranopia

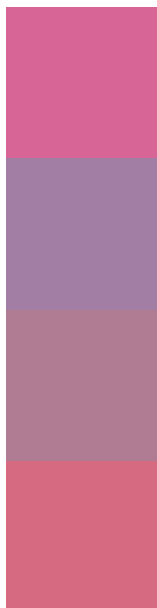
141.8100, 6.6470, 6.1910



Tritanopia

140.5950, 59.1410, 24.0130

Trichromacy



Original Color

141.2590, 51.9400, 38.8840

Protanomaly

141.2100, 8.9370, 19.7610

Deuteranomaly

141.8710, 23.0130, 17.9650

Tritanomaly

140.5010, 56.7100, 29.5260

Monochromacy



Original Color

141.2590, 51.9400, 38.8840

Achromatopsia

141.0000, -0.0000, -0.0000

Achromatomaly

141.1970, 18.9790, 13.9790

CSS Examples

Text

The CSS property to change the color of the text to YIQ 141.2590, 51.9400, 38.8840 is called "color". The color property can be set on classes, ids or directly on the HTML element.

This example shows how text in the color `rgb(215, 102, 150)` looks like.

```
.text, #text, p{  
    color:rgb(215, 102, 150)  
}
```

If you want to add a text shadow in that color use the text-shadow property, you can generate a text shadow directly with our [CSS Text Shadow Generator](#).

Here you see how black text with a 4 pixel rgb(215, 102, 150) colored shadow looks like.

```
.shadow{ text-shadow: 4px 4px 2px rgb(215, 102, 150) }
```

Border

The CSS property to change the border of an element to YIQ 141.2590, 51.9400, 38.8840 is called "border". The border property can be set on classes, ids or directly on the HTML element.

This example shows the color as border, it can be applied via the CSS property "border" or "border-color".

```
.border, #border, table{ border:4px solid rgb(215, 102, 150) }
```


If only the border color should be changed use the property `border-color`.

```
.border{ border-color:rgb(215, 102, 150) }
```

If you want to add a box shadow in that color use:

Here you see how a box with a 4 pixel `rgb(215, 102, 150)` colored shadow looks like.

```
.boxshadow{ -moz-box-shadow:4px 4px 4px 4px rgb(215, 102, 150); -webkit-box-shadow:4px 4px 4px 4px rgb(215, 102, 150); box-shadow:4px 4px 4px 4px rgb(215, 102, 150) }
```

Background

The CSS property to change the background color of an element to YIQ 141.2590, 51.9400, 38.8840 is called "background". The background property can be set on classes, ids or directly on the HTML element.

```
.background, #background, body{  
background: rgb(215, 102, 150) }
```

If only the background color should be changed can be used:

```
.background{ background-color: rgb(215,  
102, 150) }
```

This example shows the color as background, it is applied via the CSS property "background".

To optimize and compress your CSS code, you can use our [online CSS compressor and optimizer](#) based on csstidy. If you want to create a linear or radial gradient as background or border, check our [CSS Gradient Generator](#).

Hey! You found this booklet interesting? Support Converting Colors with the new Membership Option!

The pro membership hides all ads, plus gives you double the colors in the color bucket, and more awesome pro features!

[Learn more, Memberships starting at \\$2.50/m!](#)

**Follow me
on Twitter!**

@ConvertingColor