

Converting Colors

YIQ(141.4810, 41.1260, 3.5740)

Have a look what the booklet for
YIQ(141.4810, 41.1260, 3.5740)
contains.

YIQ(141.4810, 41.1260, 3.5740)	3
<i>Conversions</i>	4
<i>Details</i>	6
<i>Harmonies</i>	12
<i>Previews</i>	24
<i>Color Blindness Simulation</i>	28
<i>CSS Examples</i>	31

Color

**YIQ(141.4810, 41.1260,
3.5740)**

Conversions

Conversions Part 1

Format	Color
Hex	B78066
RGB	183, 128, 102
RGB Percent	72%, 50%, 40%
CMY	0.2822, 0.4981, 0.5998
CMYK	0.00, 0.30, 0.44, 0.28
HSL	19°, 36%, 56%
HSV	19°, 44%, 72%
XYZ	29.6521, 26.4634, 16.1276
YIQ	141.4810, 41.1260, 3.5740

Conversions

Conversions Part 2

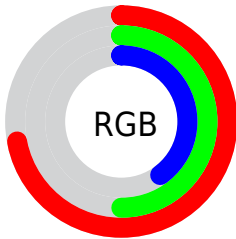
Format	Color
R_{YB}	183, 140, 102
Decimal	12025958
CIE _{Lab}	58.47, 18.10, 22.58
CIE _{LCh}	58, 28.943, 51.287
Yxy	26.4634, 0.4104, 0.3663
Android (android.graphics.Color)	4290216038 (0xFFB78066)
YUV	141.4810, -19.4641, 36.4122
Hunter-Lab	51.4426, 12.8651, 17.4219

Details

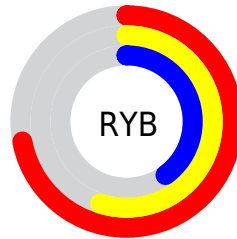
The YIQ color **141.4810, 41.1260, 3.5740** is a dark color, and the websafe version is hex **CC9966**. A complement of this color would be **143.5190, -41.1260, -3.5740**, and the grayscale version is **142.0000, -0.0000, -0.0000**.

A 20% lighter version of the original color is **195.7480, 44.7480, 4.0120**, and **90.9150, 36.9080, 2.9240** is the 20% darker color. If you saturate the color by 10%, you get **132.3850, 50.2040, 4.2520**, and if you desaturate by 10%, it is **150.5770, 32.0480, 2.8960**.

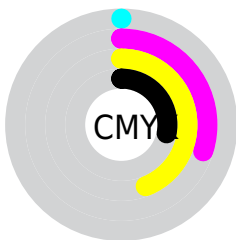
Distribution



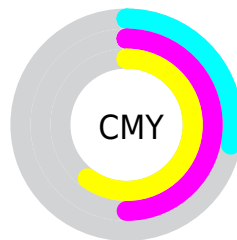
- Red (72%)
- Green (50%)
- Blue (40%)



- Red (72%)
- Yellow (55%)
- Blue (40%)



- Cyan (0%)
- Magenta (30%)
- Yellow (44%)
- Black (28%)



- Cyan (28%)
- Magenta (50%)
- Yellow (60%)

Brightness & Saturation Gradients

These gradients show how the YIQ color 141.4810, 41.1260, 3.5740 changes by changing the brightness by 10 percent. The first figure shows a shift by +10% for each color and the second figure -10%.

Similar to the brightness gradients but the following saturation gradients show a change of the YIQ color 141.4810, 41.1260, 3.5740 by changing the saturation by 10% instead.

■ 141.4810, 41.1260,
3.5740

■ 141.4810, 41.1260,
3.5740

■ 255.0000, -0.0000,
-0.0000

■ 115.6980, 39.0170,
3.2490

■ 195.7480, 44.7480,
4.0120

■ 90.3280, 37.1830,
3.4470

■ 219.4480, 36.7250,
0.7330

■ 66.2460, 34.4780,
2.9100

■ 239.0760, 20.0370,
-5.2030

■ 43.0500, 32.0940,
2.0620

■ 252.8340, 6.0990,
-5.9090

■ 21.9940, 26.5000,
4.3240

■ 7.2900, 13.9830,
5.3990

■ 0.0000, 0.0000,

0.0000

■ 141.4810, 41.1260,
3.5740

■ 141.4810, 41.1260,
3.5740

■ 132.3850, 50.2040,
4.2520

■ 150.5770, 32.0480,
2.8960

■ 122.5880, 59.8780,
5.1420

■ 160.3740, 22.3740,
2.0060

■ 113.4920, 68.9560,
5.8200

■ 169.4700, 13.2960,
1.3280

■ 103.8090, 78.3090,
7.0210

■ 179.1530, 3.9430,
0.1270

■ 94.7130, 87.3870,
7.6990

■ 188.3630, -5.4560,
-0.2400

■ 89.3500, 92.8430,
7.9390

■ 198.0460,
-14.8090, -1.4410

■ 207.1420,
-23.8870, -2.1190

■ 216.8250,
-33.2400, -3.3200

■ 224.6670,
-38.7870, -7.4190

Harmonies

Analogous

The Analogous color harmony consists of three colors that are next to each other on the color wheel.



142.7450, 40.8030, 14.9390



141.4810, 41.1260, 3.5740



140.1280, 31.4540, -8.3700

Triad

The Triadic color harmony groups three colors that are evenly spaced from another and form a triangle on the color wheel.



141.4810, 41.1260, 3.5740



129.3660, -37.0420, -22.5300



141.6180, -18.7550, 15.0130

Complementary

The Complementary color scheme is a pair of colors which are on the opposite of each other on the color wheel.



141.4810, 41.1260, 3.5740



143.5190, -41.1260, -3.5740

Split Complementary

Split-complementary colors differ from the complementary color scheme. The scheme consists of three colors, the original color and two neighbors of the complement color.



134.8810, -44.8410, 3.1830



141.4810, 41.1260, 3.5740



124.8550, -60.2880, -19.7440

Square

The Square scheme is like the rectangle color scheme, but the four colors are evenly spaced on the color wheel.



141.4810, 41.1260, 3.5740



133.8390, -10.6330, -22.0650



126.6840, -63.8200, -10.7960



144.4920, 8.2030, 22.0510

Rectangle

The Rectangle color scheme consists of four colors that form a rectangle on the color wheel.



141.4810, 41.1260, 3.5740



137.8660, 20.2680, -14.9000



126.6840, -63.8200, -10.7960



140.0190, -27.3740, 11.5220

Sweetspot

The Sweet Spot groups the original color and five complimentary colors.



141.4810, 41.1260, 3.5740



221.1390, 15.7260, 1.3420



132.4890, 30.6210, 34.2770



110.2030, 9.6740, 0.8900



247.0000, -0.0000, -0.0000



120.0000, -0.0000, -0.0000

Same Dimension

The Same Dimension uses a secret algorithm to generate beautiful new colors.



141.4810, 41.1260, 3.5740



172.7410, 63.8210, 5.2690



164.9610, 30.1260, -17.3460



87.4520, 4.5390, 0.3390



75.9940, 79.2260, 6.9220



13.6550, 14.2130, 1.2290

Inverse Universe

The Inverse Universe completely reimagines the original color for something new.



143.5190, -41.1260, -3.5740



175.8460, -64.0960, -5.7920



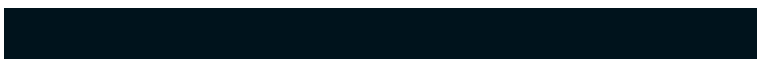
120.0390, -30.1260, 17.3460



87.5480, -4.5390, -0.3390



80.0060, -79.2260, -6.9220



14.3450, -14.2130, -1.2290

Previews

White Background



This preview shows how the YIQ color 141.4810, 41.1260, 3.5740 looks on a white background.

Color Contrast Check

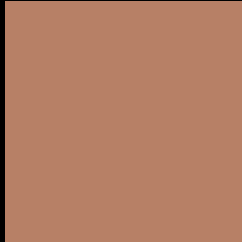
Large Text (above 18pt) WCAG AA ✓ Pass

Any Text WCAG AA × Fail

Large Text (above 18pt) WCAG AAA × Fail

Any Text WCAG AAA × Fail

Black Background



This preview shows how the YIQ color 141.4810, 41.1260, 3.5740 looks on a black background.

Color Contrast Check

Large Text (above 18pt) WCAG AA ✓ Pass

Any Text WCAG AA ✓ Pass

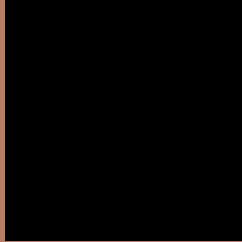
Large Text (above 18pt) WCAG AAA ✓ Pass

Any Text WCAG AAA × Fail

If you want to check with other color combinations, try the [Color Contrast Checker](#).

YIQ 141.4810, 41.1260, 3.5740

Background



This preview shows how black text looks on a background with the YIQ color 141.4810, 41.1260, 3.5740.



This preview shows how white text looks on a background with the YIQ color 141.4810, 41.1260,

3.5740.

Color Blindness Simulation

Color vision deficiency is a very complex topic, and I could not describe the different causes any better than Wikipedia does, so if you want to learn more, you should check out their [article about color blindness](#).

Dichromacy



Original Color

141.4810, 41.1260, 3.5740

Protanopia

140.2280, 16.5530, -8.1430

Deuteranopia

140.6920, 29.9860, -3.7900



Tritanopia

143.5640, 34.0630, 15.9430

Trichromacy



Original Color

141.4810, 41.1260, 3.5740

Protanomaly

140.6530, 25.7220, -3.6060

Deuteranomaly

140.7250, 34.3870, -0.9490

Tritanomaly

142.5980, 36.7230, 11.7870

Monochromacy



Original Color

141.4810, 41.1260, 3.5740

Achromatopsia

141.0000, -0.0000, -0.0000

Achromatomaly

140.9540, 14.8090, 1.4410

CSS Examples

Text

The CSS property to change the color of the text to YIQ 141.4810, 41.1260, 3.5740 is called "color". The color property can be set on classes, ids or directly on the HTML element.

This example shows how text in the color `rgb(183, 128, 102)` looks like.

```
.text, #text, p{  
    color:rgb(183, 128, 102)  
}
```

If you want to add a text shadow in that color use the text-shadow property, you can generate a text shadow directly with our [CSS Text Shadow Generator](#).

Here you see how black text with a 4 pixel rgb(183, 128, 102) colored shadow looks like.

```
.shadow{ text-shadow: 4px 4px 2px rgb(183, 128, 102) }
```

Border

The CSS property to change the border of an element to YIQ 141.4810, 41.1260, 3.5740 is called "border". The border property can be set on classes, ids or directly on the HTML element.

This example shows the color as border, it can be applied via the CSS property "border" or "border-color".

```
.border, #border, table{ border:4px solid rgb(183, 128, 102) }
```


If only the border color should be changed use the property `border-color`.

```
.border{ border-color:rgb(183, 128, 102) }
```

If you want to add a box shadow in that color use:

Here you see how a box with a 4 pixel `rgb(183, 128, 102)` colored shadow looks like.

```
.boxshadow{ -moz-box-shadow:4px 4px 4px 4px rgb(183, 128, 102); -webkit-box-shadow:4px 4px 4px 4px rgb(183, 128, 102); box-shadow:4px 4px 4px 4px rgb(183, 128, 102) }
```

Background

The CSS property to change the background color of an element to YIQ 141.4810, 41.1260, 3.5740 is called "background". The background property can be set on classes, ids or directly on the HTML element.

```
.background, #background, body{  
background: rgb(183, 128, 102) }
```

If only the background color should be changed can be used:

```
.background{ background-color: rgb(183,  
128, 102) }
```

This example shows the color as background, it is applied via the CSS property "background".

To optimize and compress your CSS code, you can use our [online CSS compressor and optimizer](#) based on csstidy. If you want to create a linear or radial gradient as background or border, check our [CSS Gradient Generator](#).

Hey! You found this booklet interesting? Support Converting Colors with the new Membership Option!

The pro membership hides all ads, plus gives you double the colors in the color bucket, and more awesome pro features!

[Learn more, Memberships starting at \\$2.50/m!](#)

**Follow me
on Twitter!**

@ConvertingColor