

Converting Colors

YIQ(141.7770, 45.8040, -4.1160)

Have a look what the booklet for
YIQ(141.7770, 45.8040, -4.1160)
contains.

YIQ(141.7770, 45.8040, -4.1160)	3
<i>Conversions</i>	4
<i>Details</i>	6
<i>Harmonies</i>	12
<i>Previews</i>	24
<i>Color Blindness Simulation</i>	28
<i>CSS Examples</i>	31

Color

**YIQ(141.7770, 45.8040,
-4.1160)**

Conversions

Conversions Part 1

Format	Color
Hex	B78454
RGB	183, 132, 84
RGB Percent	72%, 52%, 33%
CMY	0.2823, 0.4824, 0.6704
CMYK	0.00, 0.28, 0.54, 0.28
HSL	29°, 41%, 52%
HSV	29°, 54%, 72%
XYZ	29.3848, 27.2078, 12.1019
YIQ	141.7770, 45.8040, -4.1160

Conversions

Conversions Part 2

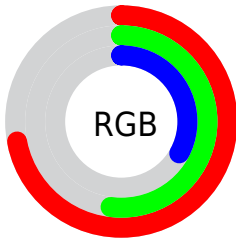
Format	Color
R_{YB}	183, 177, 84
Decimal	12026964
CIE _{Lab}	59.17, 14.10, 33.44
CIE _{LCh}	59, 36.287, 67.140
Yxy	27.2078, 0.4278, 0.3961
Android (android.graphics.Color)	4290217044 (0xFFB78454)
YUV	141.7770, -28.4841, 36.1526
Hunter-Lab	52.1611, 9.2754, 22.7569

Details

The YIQ color **141.7770, 45.8040, -4.1160** is a dark color, and the websafe version is hex **CC9966**. A complement of this color would be **125.2230, -45.8040, 4.1160**, and the grayscale version is **142.0000, -0.0000, -0.0000**.

A 20% lighter version of the original color is **195.9300, 49.7470, -3.9890**, and **90.3250, 41.2650, -4.4550** is the 20% darker color. If you saturate the color by 10%, you get **134.4420, 54.0570, -5.0070**, and if you desaturate by 10%, it is **149.1120, 37.5510, -3.2250**.

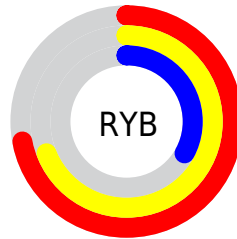
Distribution



Red (72%)

Green (52%)

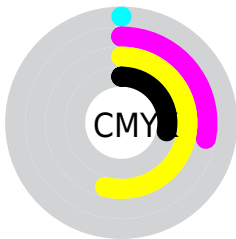
Blue (33%)



Red (72%)

Yellow (69%)

Blue (33%)

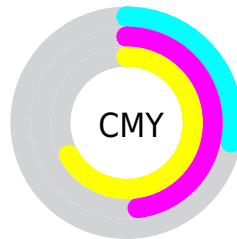


Cyan (0%)

Magenta (28%)

Yellow (54%)

Black (28%)



Cyan (28%)


Magenta (48%)

Yellow (67%)

Brightness & Saturation Gradients


These gradients show how the YIQ color 141.7770, 45.8040, -4.1160 changes by changing the brightness by 10 percent. The first figure shows a shift by +10% for each color and the second figure -10%.


Similar to the brightness gradients but the following saturation gradients show a change of the YIQ color 141.7770, 45.8040, -4.1160 by changing the saturation by 10% instead.


 141.7770, 45.8040,
-4.1160


 141.7770, 45.8040,
-4.1160


255.0000, -0.0000,
-0.0000

 115.9940, 43.6950,
-4.4410


 196.0440, 49.4260,
-3.6780

 90.3250, 41.2650,
-4.4550


 219.6300, 41.7240,
-7.2680


 66.1290, 38.8810,
-5.3030


 239.1440, 25.3570,
-13.5150

 43.8450, 33.9290,
-3.6630

 250.5540, 12.5190,
-12.1290

 24.3310, 23.9330,
1.2850

 253.8600, 3.2100,
-3.1100

 6.8770, 13.7080,
4.8760

 0.0000, 0.0000,

0.0000

■ 141.7770, 45.8040,
-4.1160

■ 141.7770, 45.8040,
-4.1160

■ 134.4420, 54.0570,
-5.0070

■ 149.1120, 37.5510,
-3.2250

■ 126.4060, 62.9060,
-5.6860

■ 157.1480, 28.7020,
-2.5460

■ 119.0710, 71.1590,
-6.5770

■ 164.4830, 20.4490,
-1.6550

■ 111.1490, 79.6870,
-6.9450

■ 172.4050, 11.9210,
-1.2870

■ 106.9600, 84.5930,
-7.7510

■ 179.8540, 3.3470,
-0.0850

■ 187.7760, -5.1810,
0.2830

■ 195.1110,
-13.4340, 1.1740

■ 202.4460,
-21.6870, 2.0650

■ 210.4820,
-30.5360, 2.7440

Harmonies

Analogous

The Analogous color harmony consists of three colors that are next to each other on the color wheel.



143.4980, 51.6240, 11.5600



141.7770, 45.8040, -4.1160



139.1780, 28.0170, -17.6710

Triad

The Triadic color harmony groups three colors that are evenly spaced from another and form a triangle on the color wheel.



141.7770, 45.8040, -4.1160



116.0000, -80.2300, -32.7900



145.5430, -5.0020, 24.5820

Complementary

The Complementary color scheme is a pair of colors which are on the opposite of each other on the color wheel.



141.7770, 45.8040, -4.1160



125.2230, -45.8040, 4.1160

Split Complementary

Split-complementary colors differ from the complementary color scheme. The scheme consists of three colors, the original color and two neighbors of the complement color.



139.3040, -41.3580, 11.6500



141.7770, 45.8040, -4.1160



113.2660, -101.2300, -26.6540

Square

The Square scheme is like the rectangle color scheme, but the four colors are evenly spaced on the color wheel.



141.7770, 45.8040, -4.1160



129.7160, -32.4560, -28.5520



123.9840, -82.1600, -8.8160



146.3910, 24.8450, 28.8210

Rectangle

The Rectangle color scheme consists of four colors that form a rectangle on the color wheel.



141.7770, 45.8040, -4.1160



136.8060, 11.3290, -23.6070



123.9840, -82.1600, -8.8160



144.0900, -16.9680, 21.1760

Sweetspot

The Sweet Spot groups the original color and five complimentary colors.



141.7770, 45.8040, -4.1160



221.5150, 17.4230, -1.8810



119.4150, 42.6330, 36.8490



110.3340, 10.6830, -0.8770



247.0000, -0.0000, -0.0000



120.0000, -0.0000, -0.0000

Same Dimension

The Same Dimension uses a secret algorithm to generate beautiful new colors.



141.7770, 45.8040, -4.1160



173.0710, 71.1590, -6.5770



170.5400, 32.3290, -29.7430



88.0390, 4.2640, -0.1840



90.6690, 72.3510, -6.1530



16.5900, 12.8380, -1.3860

Inverse Universe

The Inverse Universe completely reimagines the original color for something new.



125.2230, -45.8040, 4.1160



147.5160, -71.4340, 6.0540



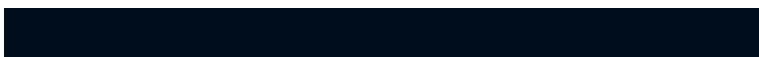
96.4600, -32.3290, 29.7430



86.3740, -3.9890, 0.7070



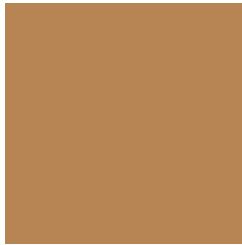
64.7440, -72.0760, 6.6760



11.4100, -12.8380, 1.3860

Previews

White Background



This preview shows how the YIQ color 141.7770, 45.8040, -4.1160 looks on a white background.

Color Contrast Check

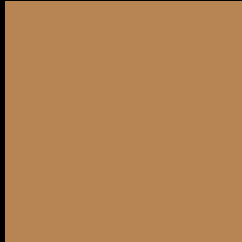
Large Text (above 18pt) WCAG AA ✓ Pass

Any Text WCAG AA × Fail

Large Text (above 18pt) WCAG AAA × Fail

Any Text WCAG AAA × Fail

Black Background



This preview shows how the YIQ color 141.7770, 45.8040, -4.1160 looks on a black background.

Color Contrast Check

Large Text (above 18pt) WCAG AA ✓ Pass

Any Text WCAG AA ✓ Pass

Large Text (above 18pt) WCAG AAA ✓ Pass

Any Text WCAG AAA × Fail

If you want to check with other color combinations, try the [Color Contrast Checker](#).

YIQ 141.7770, 45.8040, -4.1160

Background



This preview shows how black text looks on a background with the YIQ color 141.7770, 45.8040, -4.1160.



This preview shows how white text looks on a background with the YIQ color 141.7770, 45.8040,

-4.1160.

Color Blindness Simulation

Color vision deficiency is a very complex topic, and I could not describe the different causes any better than Wikipedia does, so if you want to learn more, you should check out their [article about color blindness](#).

Dichromacy



Original Color

141.7770, 45.8040, -4.1160

Protanopia

140.6170, 25.4030, -14.3490

Deuteranopia

141.3200, 39.6610, -8.4270



Tritanopia

145.2650, 33.4670, 15.7310

Trichromacy



Original Color

141.7770, 45.8040, -4.1160

Protanomaly

141.1450, 32.7840, -10.4480

Deuteranomaly

141.6300, 41.7240, -7.2680

Tritanomaly

143.9740, 38.4200, 8.5640

Monochromacy



Original Color

141.7770, 45.8040, -4.1160

Achromatopsia

142.0000, -0.0000, -0.0000

Achromatomaly

141.7430, 16.7810, -1.2590

CSS Examples

Text

The CSS property to change the color of the text to YIQ 141.7770, 45.8040, -4.1160 is called "color". The color property can be set on classes, ids or directly on the HTML element.

This example shows how text in the color `rgb(183, 132, 84)` looks like.

```
.text, #text, p{  
    color:rgb(183, 132, 84)  
}
```

If you want to add a text shadow in that color use the text-shadow property, you can generate a text shadow directly with our [CSS Text Shadow Generator](#).

Here you see how black text with a 4 pixel rgb(183, 132, 84) colored shadow looks like.

```
.shadow{ text-shadow: 4px 4px 2px rgb(183, 132, 84) }
```

Border

The CSS property to change the border of an element to YIQ 141.7770, 45.8040, -4.1160 is called "border". The border property can be set on classes, ids or directly on the HTML element.

This example shows the color as border, it can be applied via the CSS property "border" or "border-color".

```
.border, #border, table{ border:4px solid rgb(183, 132, 84) }
```


If only the border color should be changed use the property `border-color`.

```
.border{ border-color:rgb(183, 132, 84) }
```

If you want to add a box shadow in that color use:

Here you see how a box with a 4 pixel `rgb(183, 132, 84)` colored shadow looks like.

```
.boxshadow{ -moz-box-shadow:4px 4px 4px  
4px rgb(183, 132, 84); -webkit-box-  
shadow:4px 4px 4px 4px rgb(183, 132, 84);  
box-shadow:4px 4px 4px 4px rgb(183, 132,  
84) }
```

Background

The CSS property to change the background color of an element to YIQ 141.7770, 45.8040, -4.1160 is called "background". The background property can be set on classes, ids or directly on the HTML element.

```
.background, #background, body{  
background: rgb(183, 132, 84) }
```

If only the background color should be changed can be used:

```
.background{ background-color: rgb(183,  
132, 84) }
```

This example shows the color as background, it is applied via the CSS property "background".

To optimize and compress your CSS code, you can use our [online CSS compressor and optimizer](#) based on csstidy. If you want to create a linear or radial gradient as background or border, check our [CSS Gradient Generator](#).

Hey! You found this booklet interesting? Support Converting Colors with the new Membership Option!

The pro membership hides all ads, plus gives you double the colors in the color bucket, and more awesome pro features!

[Learn more, Memberships starting at \\$2.50/m!](#)

**Follow me
on Twitter!**

@ConvertingColor