

Converting Colors

YIQ(142.0880, 65.6030, 39.0670)

Have a look what the booklet for
YIQ(142.0880, 65.6030, 39.0670)
contains.

YIQ(142.0880, 65.6030, 39.0670)	3
<i>Conversions</i>	4
<i>Details</i>	6
<i>Harmonies</i>	12
<i>Previews</i>	24
<i>Color Blindness Simulation</i>	28
<i>CSS Examples</i>	31

Color

**YIQ(142.0880, 65.6030,
39.0670)**

Conversions

Conversions Part 1

Format	Color
Hex	E56388
RGB	229, 99, 136
RGB Percent	90%, 39%, 53%
CMY	0.1016, 0.6119, 0.4664
CMYK	0.00, 0.57, 0.41, 0.10
HSL	343°, 72%, 64%
HSV	343°, 57%, 90%
XYZ	41.2450, 27.3646, 26.4226
YIQ	142.0880, 65.6030, 39.0670

Conversions

Conversions Part 2

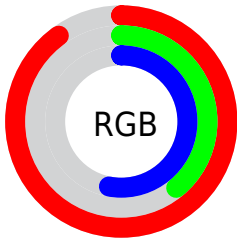
Format	Color
R _Y B	229, 99, 136
Decimal	15033224
CIE Lab	59.31, 53.93, 5.10
CIE LCh	59, 54.169, 5.399
Yxy	27.3646, 0.4340, 0.2880
Android (android.graphics.Color)	4293223304 (0xFFE56388)
YUV	142.0880, -3.0014, 76.2218
Hunter-Lab	52.3111, 49.1946, 6.6701

Details

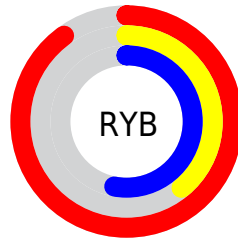
The YIQ color **142.0880, 65.6030, 39.0670** is a light color, and the websafe version is hex **FF6699**. A complement of this color would be **185.9120, -65.6030, -39.0670**, and the grayscale version is **142.0000, -0.0000, -0.0000**.

A 20% lighter version of the original color is **188.1890, 48.9610, 32.2970**, and **84.9890, 61.5680, 40.6080** is the 20% darker color. If you saturate the color by 10%, you get **126.7630, 77.0640, 46.1200**, and if you desaturate by 10%, it is **157.4130, 54.1420, 32.0140**.

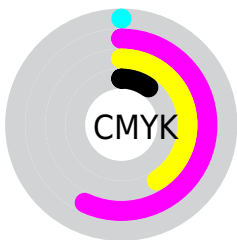
Distribution



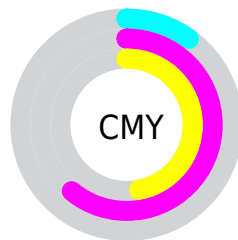
- Red (90%)
- Green (39%)
- Blue (53%)



- Red (90%)
- Yellow (39%)
- Blue (53%)



- Cyan (0%)
- Magenta (57%)
- Yellow (41%)
- Black (10%)



- Cyan (10%)
- Magenta (61%)
- Yellow (47%)

Brightness & Saturation Gradients

These gradients show how the YIQ color 142.0880, 65.6030, 39.0670 changes by changing the brightness by 10 percent. The first figure shows a shift by +10% for each color and the second figure -10%.

Similar to the brightness gradients but the following saturation gradients show a change of the YIQ color 142.0880, 65.6030, 39.0670 by changing the saturation by 10% instead.

142.0880, 65.6030,
39.0670

142.0880, 65.6030,
39.0670

255.0000, -0.0000,
-0.0000

113.8320, 63.4480,
39.5760

188.1890, 48.9610,
32.2970

85.1030, 61.2470,
40.9190

207.8170, 32.2730,
26.3610

49.0420, 63.2170,
49.2730

228.0320, 15.3100,
19.9020

38.2760, 53.2700,
36.8060

246.1950, 4.1250,
7.8450

27.3250, 42.4060,
24.4380

17.5700, 33.9260,
12.9180

5.3820, 10.7280,

3.8160

■ 0.0000, 0.0000,
0.0000

■ 142.0880, 65.6030,
39.0670

■ 142.0880, 65.6030,
39.0670

■ 126.7630, 77.0640,
46.1200

■ 157.4130, 54.1420,
32.0140

■ 111.3240, 88.8460,
52.8620

■ 172.8520, 42.3600,
25.2720

■ 95.9990, 100.3070,
59.9150

■ 188.1770, 30.8990,
18.2190

■ 80.6740, 111.7680,
66.9680

■ 203.6160, 19.1170,
11.4770

■ 75.8810, 115.6190,
68.7630

■ 218.3540, 7.9310,
4.9470

■ 233.6790, -3.5300,
-2.1060

■ 246.7700,
-14.2120, -6.7560

■ 247.2260,
-15.4960, -5.5120

Harmonies

Analogous

The Analogous color harmony consists of three colors that are next to each other on the color wheel.



145.5640, 35.2040, 44.8360



142.0880, 65.6030, 39.0670



140.9310, 75.5100, 19.2060

Triad

The Triadic color harmony groups three colors that are evenly spaced from another and form a triangle on the color wheel.



142.0880, 65.6030, 39.0670



131.6010, 3.9960, -39.3960



118.8520, -116.9590, -11.4150

Complementary

The Complementary color scheme is a pair of colors which are on the opposite of each other on the color wheel.



142.0880, 65.6030, 39.0670



185.9120, -65.6030, -39.0670

Split Complementary

Split-complementary colors differ from the complementary color scheme. The scheme consists of three colors, the original color and two neighbors of the complement color.



119.3130, -108.6120, -25.0280



142.0880, 65.6030, 39.0670



114.6700, -62.3460, -48.5380

Square

The Square scheme is like the rectangle color scheme, but the four colors are evenly spaced on the color wheel.



142.0880, 65.6030, 39.0670



136.3410, 43.1950, -28.4290



114.5420, -93.8000, -40.1680



129.2900, -82.3010, 10.2670

Rectangle

The Rectangle color scheme consists of four colors that form a rectangle on the color wheel.



142.0880, 65.6030, 39.0670



140.6400, 71.2950, 1.9750



114.5420, -93.8000, -40.1680



119.5870, -114.8950, -15.7830

Sweetspot

The Sweet Spot groups the original color and five complimentary colors.



142.0880, 65.6030, 39.0670



226.2250, 21.7760, 12.8480



141.0290, 12.5060, 59.7220



110.5720, 13.2490, 7.6890



0.0000, 0.0000, 0.0000



128.0000, -0.0000, -0.0000

Same Dimension

The Same Dimension uses a secret algorithm to generate beautiful new colors.



142.0880, 65.6030, 39.0670



139.3130, 87.3790, 51.9150



153.1320, 70.3300, 13.9620



107.0440, 5.8680, 3.7880



59.3350, 90.3130, 53.8090



16.9590, 25.5810, 15.4770

Inverse Universe

The Inverse Universe completely reimagines the original color for something new.



142.0880, 65.6030, 39.0670



139.3130, 87.3790, 51.9150



174.8680, -70.3300, -13.9620



107.0440, 5.8680, 3.7880



59.3350, 90.3130, 53.8090



16.9590, 25.5810, 15.4770

Previews

White Background



This preview shows how the YIQ color 142.0880, 65.6030, 39.0670 looks on a white background.

Color Contrast Check

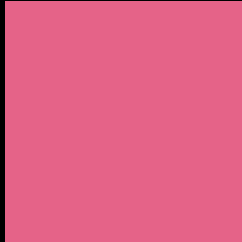
Large Text (above 18pt) WCAG AA ✓ Pass

Any Text WCAG AA × Fail

Large Text (above 18pt) WCAG AAA × Fail

Any Text WCAG AAA × Fail

Black Background



This preview shows how the YIQ color 142.0880, 65.6030, 39.0670 looks on a black background.

Color Contrast Check

Large Text (above 18pt) WCAG AA ✓ Pass

Any Text WCAG AA ✓ Pass

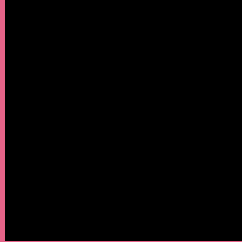
Large Text (above 18pt) WCAG AAA ✓ Pass

Any Text WCAG AAA × Fail

If you want to check with other color combinations, try the [Color Contrast Checker](#).

YIQ 142.0880, 65.6030, 39.0670

Background



This preview shows how black text looks on a background with the YIQ color 142.0880, 65.6030, 39.0670.



This preview shows how white text looks on a background with the YIQ color 142.0880, 65.6030,

Color Blindness Simulation

Color vision deficiency is a very complex topic, and I could not describe the different causes any better than Wikipedia does, so if you want to learn more, you should check out their [article about color blindness](#).

Dichromacy



Original Color

142.0880, 65.6030, 39.0670

Protanopia

143.8670, -6.6950, 5.6970

Deuteranopia

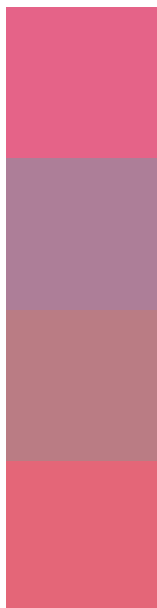
144.2640, 16.8720, 2.6000



Tritanopia

141.5750, 71.0610, 28.2530

Trichromacy



Original Color

142.0880, 65.6030, 39.0670

Protanomaly

143.0170, 19.6660, 18.0500

Deuteranomaly

143.4500, 34.3840, 15.6320

Tritanomaly

141.7260, 69.3180, 32.3100

Monochromacy



Original Color

142.0880, 65.6030, 39.0670

Achromatopsia

142.0000, -0.0000, -0.0000

Achromatomaly

141.9480, 24.1140, 14.5300

CSS Examples

Text

The CSS property to change the color of the text to YIQ 142.0880, 65.6030, 39.0670 is called "color". The color property can be set on classes, ids or directly on the HTML element.

This example shows how text in the color `rgb(229, 99, 136)` looks like.

```
.text, #text, p{  
    color:rgb(229, 99, 136)  
}
```

If you want to add a text shadow in that color use the text-shadow property, you can generate a text shadow directly with our [CSS Text Shadow Generator](#).

Here you see how black text with a 4 pixel rgb(229, 99, 136) colored shadow looks like.

```
.shadow{ text-shadow: 4px 4px 2px rgb(229, 99, 136) }
```

Border

The CSS property to change the border of an element to YIQ 142.0880, 65.6030, 39.0670 is called "border". The border property can be set on classes, ids or directly on the HTML element.

This example shows the color as border, it can be applied via the CSS property "border" or "border-color".

```
.border, #border, table{ border:4px solid rgb(229, 99, 136) }
```


If only the border color should be changed use the property border-color.

```
.border{ border-color:rgb(229, 99, 136) }
```

If you want to add a box shadow in that color use:

Here you see how a box with a 4 pixel rgb(229, 99, 136) colored shadow looks like.

```
.boxshadow{ -moz-box-shadow:4px 4px 4px  
4px rgb(229, 99, 136); -webkit-box-  
shadow:4px 4px 4px 4px rgb(229, 99, 136);  
box-shadow:4px 4px 4px 4px rgb(229, 99,  
136) }
```

Background

The CSS property to change the background color of an element to YIQ 142.0880, 65.6030, 39.0670 is called "background". The background property can be set on classes, ids or directly on the HTML element.

```
.background, #background, body{  
background: rgb(229, 99, 136) }
```

If only the background color should be changed can be used:

```
.background{ background-color: rgb(229, 99,  
136) }
```

This example shows the color as background, it is applied via the CSS property "background".

To optimize and compress your CSS code, you can use our [online CSS compressor and optimizer](#) based on csstidy. If you want to create a linear or radial gradient as background or border, check our [CSS Gradient Generator](#).

Hey! You found this booklet interesting? Support Converting Colors with the new Membership Option!

The pro membership hides all ads, plus gives you double the colors in the color bucket, and more awesome pro features!

[Learn more, Memberships starting at \\$2.50/m!](#)

**Follow me
on Twitter!**

@ConvertingColor