

Converting Colors

YIQ(142.2480, 86.0040, 49.3000)

Have a look what the booklet for
YIQ(142.2480, 86.0040, 49.3000)
contains.

YIQ(142.2480, 86.0040, 49.3000)	3
<i>Conversions</i>	4
<i>Details</i>	6
<i>Harmonies</i>	12
<i>Previews</i>	24
<i>Color Blindness Simulation</i>	28
<i>CSS Examples</i>	31

Color

**YIQ(142.2480, 86.0040,
49.3000)**

Conversions

Conversions Part 1

Format	Color
Hex	FF5783
RGB	255, 87, 131
RGB Percent	100%, 34%, 51%
CMY	0.0000, 0.6591, 0.4860
CMYK	0.00, 0.66, 0.49, 0.00
HSL	344°, 100%, 67%
HSV	344°, 66%, 100%
XYZ	48.7445, 29.7058, 24.6653
YIQ	142.2480, 86.0040, 49.3000

Conversions

Conversions Part 2

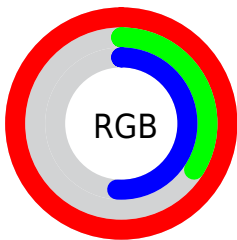
Format	Color
R _Y B	255, 87, 131
Decimal	16734083
CIE Lab	61.40, 66.60, 11.53
CIE LCh	61, 67.592, 9.820
Yxy	29.7058, 0.4727, 0.2881
Android (android.graphics.Color)	4294924163 (0xFFFF5783)
YUV	142.2480, -5.5453, 98.8835
Hunter-Lab	54.5030, 64.2604, 11.3205

Details

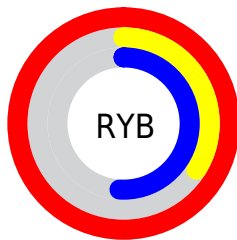
The YIQ color **142.2480, 86.0040, 49.3000** is a light color, and the websafe version is hex **FF6699**. The color can be described as light muted rose. A complement of this color would be **199.7520, -86.0040, -49.3000**, and the grayscale version is **142.0000, -0.0000, -0.0000**.

A 20% lighter version of the original color is **182.3360, 53.0410, 35.4490**, and **72.9250, 85.9560, 61.1880** is the 20% darker color. If you saturate the color by 10%, you get **124.8200, 99.2530, 56.9890**, and if you desaturate by 10%, it is **159.0890, 73.0300, 42.1340**.

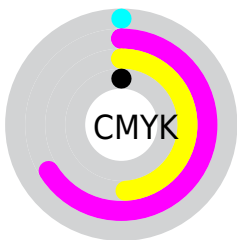
Distribution



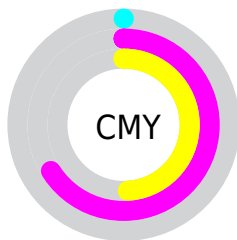
- Red (100%)
- Green (34%)
- Blue (51%)



- Red (100%)
- Yellow (34%)
- Blue (51%)



- Cyan (0%)
- Magenta (66%)
- Yellow (49%)
- Black (0%)



- Cyan (0%)
- Magenta (66%)
- Yellow (49%)

Brightness & Saturation Gradients

These gradients show how the YIQ color 142.2480, 86.0040, 49.3000 changes by changing the brightness by 10 percent. The first figure shows a shift by +10% for each color and the second figure -10%.

Similar to the brightness gradients but the following saturation gradients show a change of the YIQ color 142.2480, 86.0040, 49.3000 by changing the saturation by 10% instead.

142.2480, 86.0040,
49.3000

142.2480, 86.0040,
49.3000

255.0000, -0.0000,
-0.0000

111.9320, 84.0780,
51.1660

182.3360, 53.0410,
35.4490

72.9250, 85.9560,
61.1880

202.4370, 36.3990,
28.6790

55.1640, 77.6130,
52.6930

222.7660, 19.1150,
22.5310

43.8000, 66.4740,
39.8020

242.0860, 6.0500,
11.5060

32.5500, 55.0140,
27.2220

22.4680, 43.1410,
16.6210

12.6720, 24.7110,

9.2150

■ 0.0000, 0.0000,
0.0000

■ 142.2480, 86.0040,
49.3000

■ 142.2480, 86.0040,
49.3000

■ 124.8200, 99.2530,
56.9890

■ 159.0890, 73.0300,
42.1340

■ 107.9790,
112.2270, 64.1550

■ 176.5170, 59.7810,
34.4450

■ 90.6650, 125.1550,
72.1550

■ 193.2440, 47.1280,
26.9680

■ 83.8830, 130.4730,
74.8970

■ 210.6720, 33.8790,
19.2790

■ 227.5130, 20.9050,
12.1130

244.9410, 7.6560,
4.4240

255.0000, -0.0000,
-0.0000

Harmonies

Analogous

The Analogous color harmony consists of three colors that are next to each other on the color wheel.



148.0920, 51.7530, 58.8010



142.2480, 86.0040, 49.3000



142.4400, 93.0700, 20.3500

Triad

The Triadic color harmony groups three colors that are evenly spaced from another and form a triangle on the color wheel.



142.2480, 86.0040, 49.3000



130.4930, -4.9880, -52.7960



126.5120, -127.5050, -7.5130

Complementary

The Complementary color scheme is a pair of colors which are on the opposite of each other on the color wheel.



142.2480, 86.0040, 49.3000



199.7520, -86.0040, -49.3000

Split Complementary

Split-complementary colors differ from the complementary color scheme. The scheme consists of three colors, the original color and two neighbors of the complement color.



127.6740, -119.7540, -21.3380



142.2480, 86.0040, 49.3000



113.5210, -81.2800, -57.8240

Square

The Square scheme is like the rectangle color scheme, but the four colors are evenly spaced on the color wheel.



142.2480, 86.0040, 49.3000



136.7650, 52.9640, -45.7880



122.3500, -102.0070, -40.1110



125.5030, -104.9500, 7.7380

Rectangle

The Rectangle color scheme consists of four colors that form a rectangle on the color wheel.



142.2480, 86.0040, 49.3000



142.8510, 86.5180, -4.0900



122.3500, -102.0070, -40.1110



127.8170, -127.0460, -10.3260

Sweetspot

The Sweet Spot groups the original color and five complimentary colors.



142.2480, 86.0040, 49.3000



220.7310, 26.2230, 14.8550



142.9290, 19.3800, 78.3240



107.1810, 15.9080, 9.0600



0.0000, 0.0000, 0.0000



128.0000, -0.0000, -0.0000

Same Dimension

The Same Dimension uses a secret algorithm to generate beautiful new colors.



142.2480, 86.0040, 49.3000



120.0270, 103.1040, 58.7840



160.1250, 89.4030, 15.2190



119.2290, 6.7850, 3.6890



62.8090, 97.7860, 56.0420



21.0740, 32.6870, 18.8550

Inverse Universe

The Inverse Universe completely reimagines the original color for something new.



142.2480, 86.0040, 49.3000



120.0270, 103.1040, 58.7840



181.8750, -89.4030, -15.2190



119.2290, 6.7850, 3.6890



62.8090, 97.7860, 56.0420



21.0740, 32.6870, 18.8550

Previews

White Background



This preview shows how the YIQ color 142.2480, 86.0040, 49.3000 looks on a white background.

Color Contrast Check

Large Text (above 18pt) WCAG AA ✓ Pass

Any Text WCAG AA × Fail

Large Text (above 18pt) WCAG AAA × Fail

Any Text WCAG AAA × Fail

Black Background



This preview shows how the YIQ color 142.2480, 86.0040, 49.3000 looks on a black background.

Color Contrast Check

Large Text (above 18pt) WCAG AA ✓ Pass

Any Text WCAG AA ✓ Pass

Large Text (above 18pt) WCAG AAA ✓ Pass

Any Text WCAG AAA × Fail

If you want to check with other color combinations, try the [Color Contrast Checker](#).

YIQ 142.2480, 86.0040, 49.3000

Background



This preview shows how black text looks on a background with the YIQ color 142.2480, 86.0040, 49.3000.



This preview shows how white text looks on a background with the YIQ color 142.2480, 86.0040,

49.3000.

Color Blindness Simulation

Color vision deficiency is a very complex topic, and I could not describe the different causes any better than Wikipedia does, so if you want to learn more, you should check out their [article about color blindness](#).

Dichromacy



Original Color

142.2480, 86.0040, 49.3000

Protanopia

149.5250, -5.7320, 4.7640

Deuteranopia

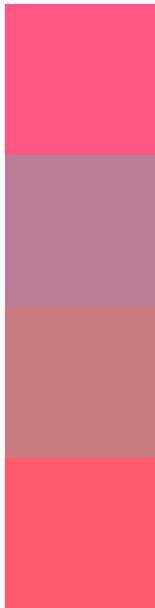
149.3910, 23.7040, -0.0720



Tritanopia

141.5240, 93.4340, 35.7860

Trichromacy



Original Color

142.2480, 86.0040, 49.3000

Protanomaly

146.9040, 27.4140, 20.8060

Deuteranomaly

146.9630, 46.1210, 17.6810

Tritanomaly

142.0170, 90.7280, 40.7760

Monochromacy



Original Color

142.2480, 86.0040, 49.3000

Achromatopsia

142.0000, -0.0000, -0.0000

Achromatomaly

142.0630, 31.2200, 17.9080

CSS Examples

Text

The CSS property to change the color of the text to YIQ 142.2480, 86.0040, 49.3000 is called "color". The color property can be set on classes, ids or directly on the HTML element.

This example shows how text in the color `rgb(255, 87, 131)` looks like.

```
.text, #text, p{  
    color:rgb(255, 87, 131)  
}
```

If you want to add a text shadow in that color use the text-shadow property, you can generate a text shadow directly with our [CSS Text Shadow Generator](#).

Here you see how black text with a 4 pixel rgb(255, 87, 131) colored shadow looks like.

```
.shadow{ text-shadow: 4px 4px 2px rgb(255, 87, 131) }
```

Border

The CSS property to change the border of an element to YIQ 142.2480, 86.0040, 49.3000 is called "border". The border property can be set on classes, ids or directly on the HTML element.

This example shows the color as border, it can be applied via the CSS property "border" or "border-color".

```
.border, #border, table{ border:4px solid rgb(255, 87, 131) }
```


If only the border color should be changed use the property `border-color`.

```
.border{ border-color:rgb(255, 87, 131) }
```

If you want to add a box shadow in that color use:

Here you see how a box with a 4 pixel `rgb(255, 87, 131)` colored shadow looks like.

```
.boxshadow{ -moz-box-shadow:4px 4px 4px  
4px rgb(255, 87, 131); -webkit-box-  
shadow:4px 4px 4px 4px rgb(255, 87, 131);  
box-shadow:4px 4px 4px 4px rgb(255, 87,  
131) }
```

Background

The CSS property to change the background color of an element to YIQ 142.2480, 86.0040, 49.3000 is called "background". The background property can be set on classes, ids or directly on the HTML element.

```
.background, #background, body{  
background: rgb(255, 87, 131) }
```

If only the background color should be changed can be used:

```
.background{ background-color: rgb(255, 87,  
131) }
```

This example shows the color as background, it is applied via the CSS property "background".

To optimize and compress your CSS code, you can use our [online CSS compressor and optimizer](#) based on csstidy. If you want to create a linear or radial gradient as background or border, check our [CSS Gradient Generator](#).

Hey! You found this booklet interesting? Support Converting Colors with the new Membership Option!

The pro membership hides all ads, plus gives you double the colors in the color bucket, and more awesome pro features!

[Learn more, Memberships starting at \\$2.50/m!](#)

**Follow me
on Twitter!**

@ConvertingColor