

Converting Colors

YIQ(142.2670, 29.9850, 1.7370)

Have a look what the booklet for
YIQ(142.2670, 29.9850, 1.7370)
contains.

YIQ(142.2670, 29.9850, 1.7370)	3
<i>Conversions</i>	4
<i>Details</i>	6
<i>Harmonies</i>	12
<i>Previews</i>	24
<i>Color Blindness Simulation</i>	28
<i>CSS Examples</i>	31

Color

**YIQ(142.2670, 29.9850,
1.7370)**

Conversions

Conversions Part 1

Format	Color
Hex	AC8570
RGB	172, 133, 112
RGB Percent	67%, 52%, 44%
CMY	0.3254, 0.4785, 0.5606
CMYK	0.00, 0.23, 0.35, 0.33
HSL	21°, 27%, 56%
HSV	21°, 35%, 67%
XYZ	28.3295, 26.7141, 19.0025
YIQ	142.2670, 29.9850, 1.7370

Conversions

Conversions Part 2

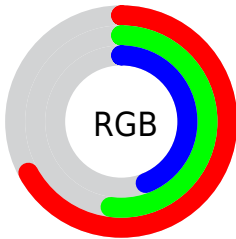
Format	Color
R_{YB}	172, 144, 112
Decimal	11306352
CIE _{Lab}	58.71, 11.97, 17.04
CIE _{LCh}	59, 20.826, 54.910
Yxy	26.7141, 0.3826, 0.3608
Android (android.graphics.Color)	4289496432 (0xFFAC8570)
YUV	142.2670, -14.9216, 26.0758
Hunter-Lab	51.6857, 7.3880, 14.3817

Details

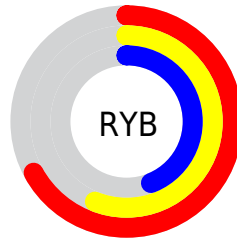
The YIQ color **142.2670, 29.9850, 1.7370** is a dark color, and the websafe version is hex **CC9999**. A complement of this color would be **141.7330, -29.9850, -1.7370**, and the grayscale version is **142.0000, -0.0000, -0.0000**.

A 20% lighter version of the original color is **196.0500, 32.0940, 2.0620**, and **91.2990, 26.9590, 1.5110** is the 20% darker color. If you saturate the color by 10%, you get **133.8720, 38.4670, 2.2030**, and if you desaturate by 10%, it is **150.6620, 21.5030, 1.2710**.

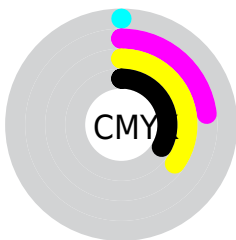
Distribution



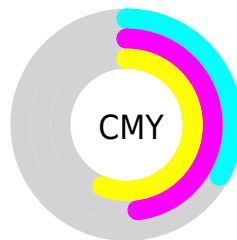
- Red (67%)
- Green (52%)
- Blue (44%)



- Red (67%)
- Yellow (56%)
- Blue (44%)



- Cyan (0%)
- Magenta (23%)
- Yellow (35%)
- Black (33%)




- Cyan (33%)
- Magenta (48%)
- Yellow (56%)

Brightness & Saturation Gradients

These gradients show how the YIQ color 142.2670, 29.9850, 1.7370 changes by changing the brightness by 10 percent. The first figure shows a shift by +10% for each color and the second figure -10%.


Similar to the brightness gradients but the following saturation gradients show a change of the YIQ color 142.2670, 29.9850, 1.7370 by changing the saturation by 10% instead.


 142.2670, 29.9850,
1.7370


 142.2670, 29.9850,
1.7370


255.0000, -0.0000,
-0.0000


 116.7830, 28.4720,
1.6240


 196.0500, 32.0940,
2.0620


 91.2990, 26.9590,
1.5110


 223.6370, 31.8190,
1.5390


 67.8150, 25.4460,
1.3980

 243.2650, 15.1310,
-4.3970

 45.0320, 23.3370,
1.0730

 254.0880, 2.5680,
-2.4880

 24.0210, 21.8700,
0.1260

 4.7840, 9.5360,
3.3920

 0.0000, 0.0000,

0.0000

■ 142.2670, 29.9850,
1.7370

■ 142.2670, 29.9850,
1.7370

■ 133.8720, 38.4670,
2.2030

■ 150.6620, 21.5030,
1.2710

■ 125.4770, 46.9490,
2.6690

■ 159.0570, 13.0210,
0.8050

■ 116.3810, 56.0270,
3.3470

■ 168.1530, 3.9430,
0.1270

■ 107.9860, 64.5090,
3.8130

■ 176.5480, -4.5390,
-0.3390

■ 99.5910, 72.9910,
4.2790

■ 184.9430,
-13.0210, -0.8050

■ 91.1960, 81.4730,
4.7450

■ 193.3380,
-21.5030, -1.2710

■ 86.6480, 86.0120,
5.0840

■ 201.7330,
-29.9850, -1.7370

■ 210.8290,
-39.0630, -2.4150

■ 217.8560,
-43.6930, -6.6130

Harmonies

Analogous

The Analogous color harmony consists of three colors that are next to each other on the color wheel.



143.7220, 30.4420, 9.9780



142.2670, 29.9850, 1.7370



140.8050, 22.2380, -6.5460

Triad

The Triadic color harmony groups three colors that are evenly spaced from another and form a triangle on the color wheel.



142.2670, 29.9850, 1.7370



133.8560, -26.4980, -15.3780



142.7020, -10.3640, 11.6200

Complementary

The Complementary color scheme is a pair of colors which are on the opposite of each other on the color wheel.



142.2670, 29.9850, 1.7370



141.7330, -29.9850, -1.7370

Split Complementary

Split-complementary colors differ from the complementary color scheme. The scheme consists of three colors, the original color and two neighbors of the complement color.



139.0910, -27.8770, 4.1150



142.2670, 29.9850, 1.7370



133.0320, -38.5570, -11.5890

Square

The Square scheme is like the rectangle color scheme, but the four colors are evenly spaced on the color wheel.



142.2670, 29.9850, 1.7370



136.4250, -9.1670, -15.5910



135.2480, -38.9250, -4.9170



144.3900, 8.2500, 15.6900

Rectangle

The Rectangle color scheme consists of four colors that form a rectangle on the color wheel.



142.2670, 29.9850, 1.7370



139.3800, 13.0690, -11.0830



135.2480, -38.9250, -4.9170



141.7120, -16.3240, 9.5000

Sweetspot

The Sweet Spot groups the original color and five complimentary colors.



142.2670, 29.9850, 1.7370



213.2740, 10.9120, 0.4800



134.5000, 22.9200, 25.1600



105.2350, 6.6480, 0.6640



240.0000, -0.0000, -0.0000



112.0000, -0.0000, 0.0000

Same Dimension

The Same Dimension uses a secret algorithm to generate beautiful new colors.



142.2670, 29.9850, 1.7370



177.4770, 46.9490, 2.6690



159.2900, 22.0100, -13.4300



82.4520, 4.5390, 0.3390



75.9610, 74.8250, 4.0810



11.5730, 11.5080, 0.6920

Inverse Universe

The Inverse Universe completely reimagines the original color for something new.



141.7330, -29.9850, -1.7370



176.5230, -46.9490, -2.6690



124.7100, -22.0100, 13.4300



82.5480, -4.5390, -0.3390



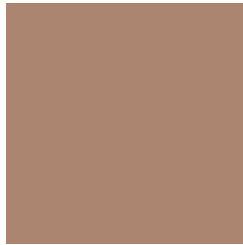
74.6260, -75.1000, -4.6040



11.4270, -11.5080, -0.6920

Previews

White Background



This preview shows how the YIQ color 142.2670, 29.9850, 1.7370 looks on a white background.

Color Contrast Check

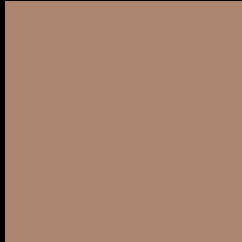
Large Text (above 18pt) WCAG AA ✓ Pass

Any Text WCAG AA × Fail

Large Text (above 18pt) WCAG AAA × Fail

Any Text WCAG AAA × Fail

Black Background



This preview shows how the YIQ color 142.2670, 29.9850, 1.7370 looks on a black background.

Color Contrast Check

Large Text (above 18pt) WCAG AA ✓ Pass

Any Text WCAG AA ✓ Pass

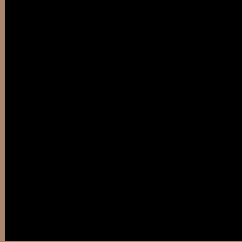
Large Text (above 18pt) WCAG AAA ✓ Pass

Any Text WCAG AAA × Fail

If you want to check with other color combinations, try the [Color Contrast Checker](#).

YIQ 142.2670, 29.9850, 1.7370

Background



This preview shows how black text looks on a background with the YIQ color 142.2670, 29.9850, 1.7370.



This preview shows how white text looks on a background with the YIQ color 142.2670, 29.9850,

Color Blindness Simulation

Color vision deficiency is a very complex topic, and I could not describe the different causes any better than Wikipedia does, so if you want to learn more, you should check out their [article about color blindness](#).

Dichromacy



Original Color

142.2670, 29.9850, 1.7370

Protanopia

140.8410, 13.3890, -5.8670

Deuteranopia

141.8210, 25.3090, -1.6270



Tritanopia

143.8940, 24.2060, 12.8620

Trichromacy



Original Color

142.2670, 29.9850, 1.7370

Protanomaly

141.3580, 19.3030, -2.9130

Deuteranomaly

142.1310, 27.3720, -0.4680

Tritanomaly

143.0420, 26.5450, 9.0170

Monochromacy



Original Color

142.2670, 29.9850, 1.7370

Achromatopsia

142.0000, -0.0000, -0.0000

Achromatomaly

142.2740, 10.9120, 0.4800

CSS Examples

Text

The CSS property to change the color of the text to YIQ 142.2670, 29.9850, 1.7370 is called "color". The color property can be set on classes, ids or directly on the HTML element.

This example shows how text in the color `rgb(172, 133, 112)` looks like.

```
.text, #text, p{  
    color:rgb(172, 133, 112)  
}
```

If you want to add a text shadow in that color use the text-shadow property, you can generate a text shadow directly with our [CSS Text Shadow Generator](#).

Here you see how black text with a 4 pixel rgb(172, 133, 112) colored shadow looks like.

```
.shadow{ text-shadow: 4px 4px 2px rgb(172, 133, 112) }
```

Border

The CSS property to change the border of an element to YIQ 142.2670, 29.9850, 1.7370 is called "border". The border property can be set on classes, ids or directly on the HTML element.

This example shows the color as border, it can be applied via the CSS property "border" or "border-color".

```
.border, #border, table{ border:4px solid rgb(172, 133, 112) }
```


If only the border color should be changed use the property `border-color`.

```
.border{ border-color:rgb(172, 133, 112) }
```

If you want to add a box shadow in that color use:

Here you see how a box with a 4 pixel `rgb(172, 133, 112)` colored shadow looks like.

```
.boxshadow{ -moz-box-shadow:4px 4px 4px  
4px rgb(172, 133, 112); -webkit-box-  
shadow:4px 4px 4px 4px rgb(172, 133, 112);  
box-shadow:4px 4px 4px 4px rgb(172, 133,  
112) }
```

Background

The CSS property to change the background color of an element to YIQ 142.2670, 29.9850, 1.7370 is called "background". The background property can be set on classes, ids or directly on the HTML element.

```
.background, #background, body{  
background: rgb(172, 133, 112) }
```

If only the background color should be changed can be used:

```
.background{ background-color: rgb(172,  
133, 112) }
```

This example shows the color as background, it is applied via the CSS property "background".

To optimize and compress your CSS code, you can use our [online CSS compressor and optimizer](#) based on csstidy. If you want to create a linear or radial gradient as background or border, check our [CSS Gradient Generator](#).

Hey! You found this booklet interesting? Support Converting Colors with the new Membership Option!

The pro membership hides all ads, plus gives you double the colors in the color bucket, and more awesome pro features!

[Learn more, Memberships starting at \\$2.50/m!](#)

**Follow me
on Twitter!**

@ConvertingColor