

Converting Colors

YIQ(142.3530, 36.0350, 13.2430)

Have a look what the booklet for
YIQ(142.3530, 36.0350, 13.2430)
contains.

YIQ(142.3530, 36.0350, 13.2430)	3
<i>Conversions</i>	4
<i>Details</i>	6
<i>Harmonies</i>	12
<i>Previews</i>	24
<i>Color Blindness Simulation</i>	28
<i>CSS Examples</i>	31

Color

**YIQ(142.3530, 36.0350,
13.2430)**

Conversions

Conversions Part 1

Format	Color
Hex	B97C7D
RGB	185, 124, 125
RGB Percent	73%, 49%, 49%
CMY	0.2744, 0.5138, 0.5097
CMYK	0.00, 0.33, 0.32, 0.27
HSL	359°, 30%, 61%
HSV	359°, 33%, 73%
XYZ	30.9250, 26.2094, 22.8432
YIQ	142.3530, 36.0350, 13.2430

Conversions

Conversions Part 2

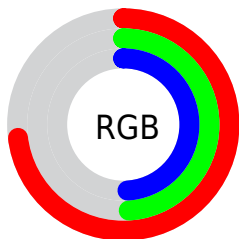
Format	Color
R _Y B	185, 124, 125
Decimal	12156029
CIE Lab	58.24, 23.92, 9.15
CIE LCh	58, 25.608, 20.940
Yxy	26.2094, 0.3867, 0.3277
Android (android.graphics.Color)	4290346109 (0xFFB97C7D)
YUV	142.3530, -8.5550, 37.4014
Hunter-Lab	51.1951, 18.2335, 9.3815

Details

The YIQ color **142.3530, 36.0350, 13.2430** is a dark color, and the websafe version is hex **996666**. A complement of this color would be **166.6470, -36.0350, -13.2430**, and the grayscale version is **142.0000, -0.0000, -0.0000**.

A 20% lighter version of the original color is **196.5490, 38.4190, 14.0910**, and **90.9720, 32.7340, 12.4940** is the 20% darker color. If you saturate the color by 10%, you get **129.1480, 47.0380, 17.5820**, and if you desaturate by 10%, it is **154.9710, 25.3070, 9.4270**.

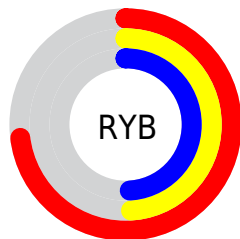
Distribution



Red (73%)

Green (49%)

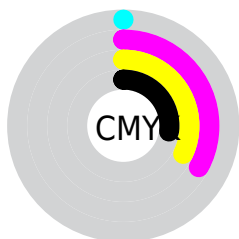
Blue (49%)



Red (73%)

Yellow (49%)

Blue (49%)

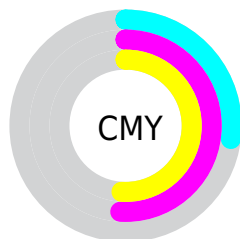


Cyan (0%)

Magenta (33%)

Yellow (32%)

Black (27%)



Cyan (27%)


Magenta (51%)


Yellow (51%)

Brightness & Saturation Gradients

These gradients show how the YIQ color 142.3530, 36.0350, 13.2430 changes by changing the brightness by 10 percent. The first figure shows a shift by +10% for each color and the second figure -10%.


Similar to the brightness gradients but the following saturation gradients show a change of the YIQ color 142.3530, 36.0350, 13.2430 by changing the saturation by 10% instead.


 142.3530, 36.0350,
13.2430


 142.3530, 36.0350,
13.2430


255.0000, -0.0000,
-0.0000


 116.4560, 34.2470,
12.6070


 196.5490, 38.4190,
14.0910


 90.9720, 32.7340,
12.4940


 219.9500, 29.8000,
10.6000

 67.1890, 30.6250,
12.1690

 239.5780, 13.1120,
4.6640

 43.4060, 28.5160,
11.8440

 20.1070, 27.9200,
11.6320

 9.0840, 17.5590,
6.6710

 0.0000, 0.0000,

0.0000

■ 142.3530, 36.0350,
13.2430

■ 142.3530, 36.0350,
13.2430

■ 129.1480, 47.0380,
17.5820

■ 154.9710, 25.3070,
9.4270

■ 116.5300, 57.7660,
21.3980

■ 168.1760, 14.3040,
5.0880

■ 103.2110, 69.0900,
25.4260

■ 180.9080, 3.2550,
1.5830

■ 90.5930, 79.8180,
29.2420

■ 194.1130, -7.7480,
-2.7560

■ 77.3880, 90.8210,
33.5810

■ 206.7310,
-18.4760, -6.5720

■ 64.7700, 101.5490,
37.3970

■ 219.9360,
-29.4790, -10.9110

■ 55.6570, 109.2970,
40.1530

■ 233.1410,
-40.4820, -15.2500

■ 234.0700,
-41.7200, -14.8400

Harmonies

Analogous

The Analogous color harmony consists of three colors that are next to each other on the color wheel.



143.4800, 25.6720, 19.3360



142.3530, 36.0350, 13.2430



141.0290, 36.5870, 3.2350

Triad

The Triadic color harmony groups three colors that are evenly spaced from another and form a triangle on the color wheel.



142.3530, 36.0350, 13.2430



134.2030, -8.6620, -19.2380



135.7030, -38.4680, 3.3240

Complementary

The Complementary color scheme is a pair of colors which are on the opposite of each other on the color wheel.



142.3530, 36.0350, 13.2430



166.6470, -36.0350, -13.2430

Split Complementary

Split-complementary colors differ from the complementary color scheme. The scheme consists of three colors, the original color and two neighbors of the complement color.



130.0120, -53.0000, -8.6480



142.3530, 36.0350, 13.2430



130.5840, -31.7240, -19.7880

Square

The Square scheme is like the rectangle color scheme, but the four colors are evenly spaced on the color wheel.



142.3530, 36.0350, 13.2430



136.9730, 12.6570, -14.6310



127.8240, -49.8350, -16.4510



141.2330, -16.2330, 13.3590

Rectangle

The Rectangle color scheme consists of four colors that form a rectangle on the color wheel.



142.3530, 36.0350, 13.2430



140.0620, 31.8200, -3.9880



127.8240, -49.8350, -16.4510



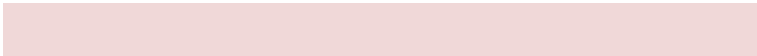
133.6590, -44.3360, -0.4640

Sweetspot

The Sweet Spot groups the original color and five complimentary colors.



142.3530, 36.0350, 13.2430



223.1760, 14.3040, 5.0880



148.5950, 15.5830, 31.4790



109.5990, 8.6190, 3.4910



247.0000, -0.0000, -0.0000



120.0000, -0.0000, -0.0000

Same Dimension

The Same Dimension uses a secret algorithm to generate beautiful new colors.



142.3530, 36.0350, 13.2430



172.8180, 56.8950, 20.6630



158.6750, 28.6560, -1.7120



85.6910, 5.3640, 1.9080



46.9860, 92.0130, 34.0050



8.3720, 16.6880, 5.9360

Inverse Universe

The Inverse Universe completely reimagines the original color for something new.



142.3530, 36.0350, 13.2430



172.8180, 56.8950, 20.6630



150.3250, -28.6560, 1.7120



85.6910, 5.3640, 1.9080



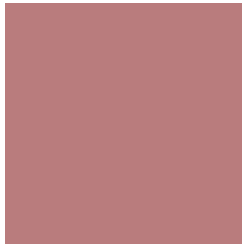
46.9860, 92.0130, 34.0050



8.3720, 16.6880, 5.9360

Previews

White Background



This preview shows how the YIQ color 142.3530, 36.0350, 13.2430 looks on a white background.

Color Contrast Check

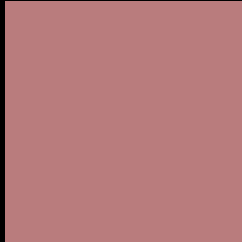
Large Text (above 18pt) WCAG AA ✓ Pass

Any Text WCAG AA ✗ Fail

Large Text (above 18pt) WCAG AAA ✗ Fail

Any Text WCAG AAA ✗ Fail

Black Background



This preview shows how the YIQ color 142.3530, 36.0350, 13.2430 looks on a black background.

Color Contrast Check

Large Text (above 18pt) WCAG AA ✓ Pass

Any Text WCAG AA ✓ Pass

Large Text (above 18pt) WCAG AAA ✓ Pass

Any Text WCAG AAA × Fail

If you want to check with other color combinations, try the [Color Contrast Checker](#).

YIQ 142.3530, 36.0350, 13.2430

Background



This preview shows how black text looks on a background with the YIQ color 142.3530, 36.0350, 13.2430.



This preview shows how white text looks on a background with the YIQ color 142.3530, 36.0350,

Color Blindness Simulation

Color vision deficiency is a very complex topic, and I could not describe the different causes any better than Wikipedia does, so if you want to learn more, you should check out their [article about color blindness](#).

Dichromacy



Original Color

142.3530, 36.0350, 13.2430

Protanopia

140.3980, 4.6310, -1.3290

Deuteranopia

141.1070, 18.7520, 1.5680



Tritanopia

142.8630, 34.6590, 16.1550

Trichromacy



Original Color

142.3530, 36.0350, 13.2430

Protanomaly

141.0190, 16.1840, 4.0560

Deuteranomaly

141.5640, 24.8950, 5.8790

Tritanomaly

142.5210, 35.6220, 15.2220

Monochromacy



Original Color

142.3530, 36.0350, 13.2430

Achromatopsia

142.0000, -0.0000, -0.0000

Achromatomaly

141.9910, 13.3870, 5.1870

CSS Examples

Text

The CSS property to change the color of the text to YIQ 142.3530, 36.0350, 13.2430 is called "color". The color property can be set on classes, ids or directly on the HTML element.

This example shows how text in the color `rgb(185, 124, 125)` looks like.

```
.text, #text, p{  
    color:rgb(185, 124, 125)  
}
```

If you want to add a text shadow in that color use the text-shadow property, you can generate a text shadow directly with our [CSS Text Shadow Generator](#).

Here you see how black text with a 4 pixel rgb(185, 124, 125) colored shadow looks like.

```
.shadow{ text-shadow: 4px 4px 2px rgb(185, 124, 125) }
```

Border

The CSS property to change the border of an element to YIQ 142.3530, 36.0350, 13.2430 is called "border". The border property can be set on classes, ids or directly on the HTML element.

This example shows the color as border, it can be applied via the CSS property "border" or "border-color".

```
.border, #border, table{ border:4px solid rgb(185, 124, 125) }
```


If only the border color should be changed use the property `border-color`.

```
.border{ border-color:rgb(185, 124, 125) }
```

If you want to add a box shadow in that color use:

Here you see how a box with a 4 pixel `rgb(185, 124, 125)` colored shadow looks like.

```
.boxshadow{ -moz-box-shadow:4px 4px 4px  
4px rgb(185, 124, 125); -webkit-box-  
shadow:4px 4px 4px 4px rgb(185, 124, 125);  
box-shadow:4px 4px 4px 4px rgb(185, 124,  
125) }
```

Background

The CSS property to change the background color of an element to YIQ 142.3530, 36.0350, 13.2430 is called "background". The background property can be set on classes, ids or directly on the HTML element.

```
.background, #background, body{  
background: rgb(185, 124, 125) }
```

If only the background color should be changed can be used:

```
.background{ background-color: rgb(185,  
124, 125) }
```

This example shows the color as background, it is applied via the CSS property "background".

To optimize and compress your CSS code, you can use our [online CSS compressor and optimizer](#) based on csstidy. If you want to create a linear or radial gradient as background or border, check our [CSS Gradient Generator](#).

Hey! You found this booklet interesting? Support Converting Colors with the new Membership Option!

The pro membership hides all ads, plus gives you double the colors in the color bucket, and more awesome pro features!

[Learn more, Memberships starting at \\$2.50/m!](#)

**Follow me
on Twitter!**

@ConvertingColor