

Converting Colors

YIQ(142.3840, 42.7770, 1.1850)

Have a look what the booklet for
YIQ(142.3840, 42.7770, 1.1850)
contains.

YIQ(142.3840, 42.7770, 1.1850)	3
<i>Conversions</i>	4
<i>Details</i>	6
<i>Harmonies</i>	12
<i>Previews</i>	24
<i>Color Blindness Simulation</i>	28
<i>CSS Examples</i>	31

Color

**YIQ(142.3840, 42.7770,
1.1850)**

Conversions

Conversions Part 1

Format	Color
Hex	B88261
RGB	184, 130, 97
RGB Percent	72%, 51%, 38%
CMY	0.2783, 0.4903, 0.6194
CMYK	0.00, 0.29, 0.47, 0.28
HSL	23°, 38%, 55%
HSV	23°, 47%, 72%
XYZ	29.9134, 27.0169, 14.9596
YIQ	142.3840, 42.7770, 1.1850

Conversions

Conversions Part 2

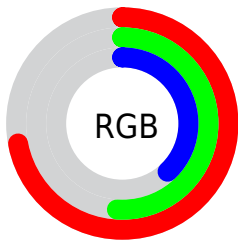
Format	Color
R_YB	184, 150, 97
Decimal	12092001
CIE Lab	58.99, 16.87, 26.09
CIE LCh	59, 31.072, 57.113
Yxy	27.0169, 0.4161, 0.3758
Android (android.graphics.Color)	4290282081 (0xFFB88261)
YUV	142.3840, -22.3743, 36.4972
Hunter-Lab	51.9778, 11.7659, 19.3203

Details

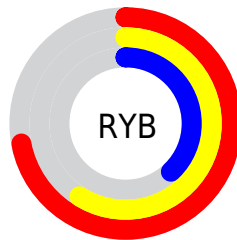
The YIQ color **142.3840, 42.7770, 1.1850** is a dark color, and the websafe version is hex **CC9966**. A complement of this color would be **138.6160, -42.7770, -1.1850**, and the grayscale version is **143.0000, -0.0000, 0.0000**.

A 20% lighter version of the original color is **196.6510, 46.3990, 1.6230**, and **90.9320, 38.2380, 0.8460** is the 20% darker color. If you saturate the color by 10%, you get **133.8750, 51.5800, 1.3400**, and if you desaturate by 10%, it is **150.8930, 33.9740, 1.0300**.

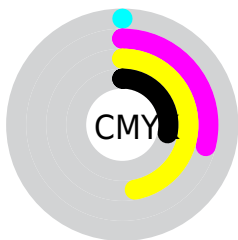
Distribution



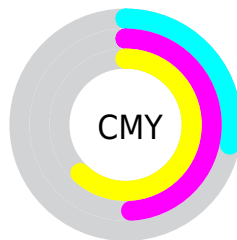
- Red (72%)
- Green (51%)
- Blue (38%)



- Red (72%)
- Yellow (59%)
- Blue (38%)



- Cyan (0%)
- Magenta (29%)
- Yellow (47%)
- Black (28%)



- Cyan (28%)
- Magenta (49%)
- Yellow (62%)

Brightness & Saturation Gradients

These gradients show how the YIQ color 142.3840, 42.7770, 1.1850 changes by changing the brightness by 10 percent. The first figure shows a shift by +10% for each color and the second figure -10%.

Similar to the brightness gradients but the following saturation gradients show a change of the YIQ color 142.3840, 42.7770, 1.1850 by changing the saturation by 10% instead.

■ 142.3840, 42.7770,
1.1850

■ 142.3840, 42.7770,
1.1850

■ 255.0000, -0.0000,
-0.0000

■ 116.6010, 40.6680,
0.8600

■ 196.6510, 46.3990,
1.6230

■ 90.9320, 38.2380,
0.8460

■ 220.0520, 37.7800,
-1.8680

■ 67.1490, 36.1290,
0.5210

■ 239.5660, 21.4130,
-8.1150

■ 43.7250, 34.3870,
-0.9490

■ 252.1500, 8.0250,
-7.7750

■ 23.1680, 25.9500,
3.2780

■ 7.5890, 14.5790,
5.6110

■ 0.0000, 0.0000,

0.0000

■ 142.3840, 42.7770,
1.1850

■ 142.3840, 42.7770,
1.1850

■ 133.8750, 51.5800,
1.3400

■ 150.8930, 33.9740,
1.0300

■ 124.6650, 60.9790,
1.7070

■ 160.1030, 24.5750,
0.6630

■ 116.1560, 69.7820,
1.8620

■ 168.6120, 15.7720,
0.5080

■ 106.9460, 79.1810,
2.2290

■ 177.8220, 6.3730,
0.1410

■ 98.4370, 87.9840,
2.3840

■ 186.3310, -2.4300,
-0.0140

■ 96.1060, 90.4140,
2.3980

■ 195.4270,
-11.5080, -0.6920

■ 204.0500,
-20.6320, -0.5360

■ 212.5590,
-29.4350, -0.6910

■ 220.8570,
-36.2660, -3.5460

Harmonies

Analogous

The Analogous color harmony consists of three colors that are next to each other on the color wheel.



143.9580, 44.5170, 13.7090



142.3840, 42.7770, 1.1850



140.2480, 30.9960, -11.0840

Triad

The Triadic color harmony groups three colors that are evenly spaced from another and form a triangle on the color wheel.



142.3840, 42.7770, 1.1850



127.6360, -46.6700, -24.2540



143.9500, -13.7580, 18.0660

Complementary

The Complementary color scheme is a pair of colors which are on the opposite of each other on the color wheel.



142.3840, 42.7770, 1.1850



138.6160, -42.7770, -1.1850

Split Complementary

Split-complementary colors differ from the complementary color scheme. The scheme consists of three colors, the original color and two neighbors of the complement color.



137.0600, -43.7870, 6.1090



142.3840, 42.7770, 1.1850



122.1570, -72.9420, -21.6940

Square

The Square scheme is like the rectangle color scheme, but the four colors are evenly spaced on the color wheel.



142.3840, 42.7770, 1.1850



133.8490, -16.5930, -24.1850



126.9870, -69.0470, -9.6790



145.5960, 13.8420, 24.4820

Rectangle

The Rectangle color scheme consists of four colors that form a rectangle on the color wheel.



142.3840, 42.7770, 1.1850



138.6160, 17.9760, -17.4160



126.9870, -69.0470, -9.6790



141.9810, -24.2110, 14.7730

Sweetspot

The Sweet Spot groups the original color and five complimentary colors.



142.3840, 42.7770, 1.1850



223.7970, 16.6890, 0.4090



129.2830, 34.1970, 35.5490



109.9750, 10.3160, 0.2680



247.0000, -0.0000, -0.0000



120.0000, -0.0000, -0.0000

Same Dimension

The Same Dimension uses a secret algorithm to generate beautiful new colors.



142.3840, 42.7770, 1.1850



174.4870, 67.3520, 1.8480



167.0380, 31.2270, -20.7810



87.4520, 4.5390, 0.3390



81.2770, 76.7510, 2.2150



14.8290, 13.6630, 0.1830

Inverse Universe

The Inverse Universe completely reimagines the original color for something new.



138.6160, -42.7770, -1.1850



168.5130, -67.3520, -1.8480



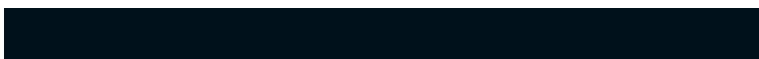
113.9620, -31.2270, 20.7810



86.9610, -4.2640, 0.1840



74.7230, -76.7510, -2.2150



13.1710, -13.6630, -0.1830

Previews

White Background



This preview shows how the YIQ color 142.3840, 42.7770, 1.1850 looks on a white background.

Color Contrast Check

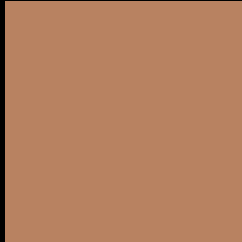
Large Text (above 18pt) WCAG AA ✓ Pass

Any Text WCAG AA × Fail

Large Text (above 18pt) WCAG AAA × Fail

Any Text WCAG AAA × Fail

Black Background



This preview shows how the YIQ color 142.3840, 42.7770, 1.1850 looks on a black background.

Color Contrast Check

Large Text (above 18pt) WCAG AA ✓ Pass

Any Text WCAG AA ✓ Pass

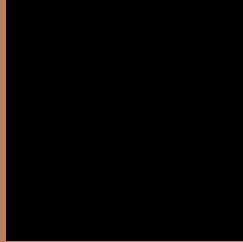
Large Text (above 18pt) WCAG AAA ✓ Pass

Any Text WCAG AAA × Fail

If you want to check with other color combinations, try the [Color Contrast Checker](#).

YIQ 142.3840, 42.7770, 1.1850

Background



This preview shows how black text looks on a background with the YIQ color 142.3840, 42.7770, 1.1850.



This preview shows how white text looks on a background with the YIQ color 142.3840, 42.7770,

1.1850.

Color Blindness Simulation

Color vision deficiency is a very complex topic, and I could not describe the different causes any better than Wikipedia does, so if you want to learn more, you should check out their [article about color blindness](#).

Dichromacy



Original Color

142.3840, 42.7770, 1.1850

Protanopia

140.7290, 19.3960, -10.1080

Deuteranopia

141.6060, 33.1040, -5.2320



Tritanopia

144.5640, 34.0630, 15.9430

Trichromacy



Original Color

142.3840, 42.7770, 1.1850

Protanomaly

141.4420, 27.6940, -6.3060

Deuteranomaly

141.9270, 36.6340, -3.1260

Tritanomaly

143.9570, 37.0900, 10.6420

Monochromacy



Original Color

142.3840, 42.7770, 1.1850

Achromatopsia

142.0000, -0.0000, -0.0000

Achromatomaly

142.3130, 15.1760, 0.2960

CSS Examples

Text

The CSS property to change the color of the text to YIQ 142.3840, 42.7770, 1.1850 is called "color". The color property can be set on classes, ids or directly on the HTML element.

This example shows how text in the color `rgb(184, 130, 97)` looks like.

```
.text, #text, p{  
    color:rgb(184, 130, 97)  
}
```

If you want to add a text shadow in that color use the text-shadow property, you can generate a text shadow directly with our [CSS Text Shadow Generator](#).

Here you see how black text with a 4 pixel rgb(184, 130, 97) colored shadow looks like.

```
.shadow{ text-shadow: 4px 4px 2px rgb(184, 130, 97) }
```

Border

The CSS property to change the border of an element to YIQ 142.3840, 42.7770, 1.1850 is called "border". The border property can be set on classes, ids or directly on the HTML element.

This example shows the color as border, it can be applied via the CSS property "border" or "border-color".

```
.border, #border, table{ border:4px solid rgb(184, 130, 97) }
```


If only the border color should be changed use the property border-color.

```
.border{ border-color:rgb(184, 130, 97) }
```

If you want to add a box shadow in that color use:

Here you see how a box with a 4 pixel rgb(184, 130, 97) colored shadow looks like.

```
.boxshadow{ -moz-box-shadow:4px 4px 4px  
4px rgb(184, 130, 97); -webkit-box-  
shadow:4px 4px 4px 4px rgb(184, 130, 97);  
box-shadow:4px 4px 4px 4px rgb(184, 130,  
97) }
```

Background

The CSS property to change the background color of an element to YIQ 142.3840, 42.7770, 1.1850 is called "background". The background property can be set on classes, ids or directly on the HTML element.

```
.background, #background, body{  
background: rgb(184, 130, 97) }
```

If only the background color should be changed can be used:

```
.background{ background-color: rgb(184,  
130, 97) }
```

This example shows the color as background, it is applied via the CSS property "background".

To optimize and compress your CSS code, you can use our [online CSS compressor and optimizer](#) based on csstidy. If you want to create a linear or radial gradient as background or border, check our [CSS Gradient Generator](#).

Hey! You found this booklet interesting? Support Converting Colors with the new Membership Option!

The pro membership hides all ads, plus gives you double the colors in the color bucket, and more awesome pro features!

[Learn more, Memberships starting at \\$2.50/m!](#)

**Follow me
on Twitter!**

@ConvertingColor