

Converting Colors

YIQ(143.4450, 23.6120, 1.5960)

Have a look what the booklet for
YIQ(143.4450, 23.6120, 1.5960)
contains.

YIQ(143.4450, 23.6120, 1.5960)	3
<i>Conversions</i>	4
<i>Details</i>	6
<i>Harmonies</i>	12
<i>Previews</i>	24
<i>Color Blindness Simulation</i>	28
<i>CSS Examples</i>	31

Color

**YIQ(143.4450, 23.6120,
1.5960)**

Conversions

Conversions Part 1

Format	Color
Hex	A78878
RGB	167, 136, 120
RGB Percent	65%, 53%, 47%
CMY	0.3450, 0.4667, 0.5293
CMYK	0.00, 0.19, 0.28, 0.35
HSL	20°, 21%, 56%
HSV	20°, 28%, 65%
XYZ	28.1339, 27.1786, 21.5411
YIQ	143.4450, 23.6120, 1.5960

Conversions

Conversions Part 2

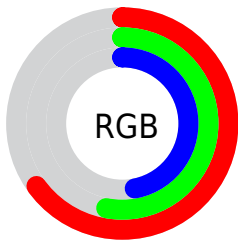
Format	Color
R_{YB}	167, 144, 120
Decimal	10979448
CIE Lab	59.14, 9.35, 13.01
CIE LCh	59, 16.021, 54.314
Yxy	27.1786, 0.3661, 0.3536
Android (android.graphics.Color)	4289169528 (0xFFA78878)
YUV	143.4450, -11.5584, 20.6577
Hunter-Lab	52.1331, 5.0955, 11.9949

Details

The YIQ color **143.4450, 23.6120, 1.5960** is a dark color, and the websafe version is hex **CC9999**. A complement of this color would be **143.5550, -23.6120, -1.5960**, and the grayscale version is **144.0000, -0.0000, 0.0000**.

A 20% lighter version of the original color is **197.2280, 25.7210, 1.9210**, and **92.7760, 21.1820, 1.5820** is the 20% darker color. If you saturate the color by 10%, you get **135.0500, 32.0940, 2.0620**, and if you desaturate by 10%, it is **151.8400, 15.1300, 1.1300**.

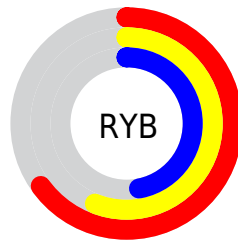
Distribution



Red (65%)

Green (53%)

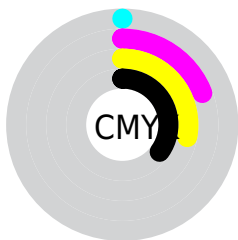
Blue (47%)



Red (65%)

Yellow (56%)

Blue (47%)

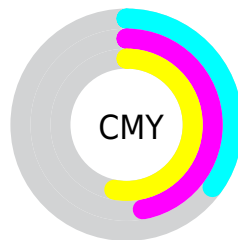


Cyan (0%)

Magenta (19%)

Yellow (28%)

Black (35%)



Cyan (35%)

Magenta (47%)

Yellow (53%)

Brightness & Saturation Gradients


These gradients show how the YIQ color 143.4450, 23.6120, 1.5960 changes by changing the brightness by 10 percent. The first figure shows a shift by +10% for each color and the second figure -10%.


Similar to the brightness gradients but the following saturation gradients show a change of the YIQ color 143.4450, 23.6120, 1.5960 by changing the saturation by 10% instead.


 143.4450, 23.6120,
1.5960


 143.4450, 23.6120,
1.5960


255.0000, -0.0000,
-0.0000


 117.8470, 22.4200,
1.1720


 197.2280, 25.7210,
1.9210


 92.7760, 21.1820,
1.5820


 225.5270, 26.3170,
2.1330

 69.1780, 19.9900,
1.1580

 246.6390, 11.1420,
-3.6900

 46.6940, 18.4770,
1.0450

 24.5260, 18.8900,
-0.9340

 4.1860, 8.3440,
2.9680

 0.0000, 0.0000,

0.0000

■ 143.4450, 23.6120,
1.5960

■ 143.4450, 23.6120,
1.5960

■ 135.0500, 32.0940,
2.0620

■ 151.8400, 15.1300,
1.1300

■ 126.7690, 40.2550,
2.8390

■ 160.1210, 6.9690,
0.3530

■ 118.3740, 48.7370,
3.3050

■ 168.5160, -1.5130,
-0.1130

■ 109.9790, 57.2190,
3.7710

■ 176.9110, -9.9950,
-0.5790

■ 101.6980, 65.3800,
4.5480

■ 185.3060,
-18.4770, -1.0450

■ 93.3030, 73.8620,
5.0140

■ 193.5870,
-26.6380, -1.8220

■ 84.9080, 82.3440,
5.4800

■ 201.9820,
-35.1200, -2.2880

■ 83.3920, 83.8570,
5.5930

■ 210.3770,
-43.6020, -2.7540

■ 216.9480,
-46.9480, -8.1960

Harmonies

Analogous

The Analogous color harmony consists of three colors that are next to each other on the color wheel.



144.4330, 23.8860, 7.6460



143.4450, 23.6120, 1.5960



141.9340, 17.5610, -4.3830

Triad

The Triadic color harmony groups three colors that are evenly spaced from another and form a triangle on the color wheel.



143.4450, 23.6120, 1.5960



137.0850, -19.7130, -11.6890



143.4910, -8.3920, 8.9200

Complementary

The Complementary color scheme is a pair of colors which are on the opposite of each other on the color wheel.



143.4450, 23.6120, 1.5960



143.5550, -23.6120, -1.5960

Split Complementary

Split-complementary colors differ from the complementary color scheme. The scheme consists of three colors, the original color and two neighbors of the complement color.



140.6850, -20.8620, 3.6340



143.4450, 23.6120, 1.5960



136.8870, -27.7830, -8.6070

Square

The Square scheme is like the rectangle color scheme, but the four colors are evenly spaced on the color wheel.



143.4450, 23.6120, 1.5960



138.6150, -6.6460, -11.7180



138.2770, -28.7010, -2.9810



144.6130, 6.0040, 12.3400

Rectangle

The Rectangle color scheme consists of four colors that form a rectangle on the color wheel.



143.4450, 23.6120, 1.5960



141.2920, 10.5010, -8.5950



138.2770, -28.7010, -2.9810



142.3980, -12.5640, 7.4360

Sweetspot

The Sweet Spot groups the original color and five complimentary colors.



143.4450, 23.6120, 1.5960



207.9040, 9.0780, 0.6780



137.5870, 18.0610, 19.6050



104.0500, 5.7310, 0.7630



237.0000, -0.0000, -0.0000



110.0000, 0.0000, 0.0000

Same Dimension

The Same Dimension uses a secret algorithm to generate beautiful new colors.



143.4450, 23.6120, 1.5960



179.8010, 37.2290, 2.6130



156.9460, 17.2870, -10.4330



80.1530, 3.9430, 0.1270



73.6020, 74.4580, 5.2260



10.0890, 9.9950, 0.5790

Inverse Universe

The Inverse Universe completely reimagines the original color for something new.



143.5550, -23.6120, -1.5960



180.1990, -37.2290, -2.6130



130.0540, -17.2870, 10.4330



79.8470, -3.9430, -0.1270



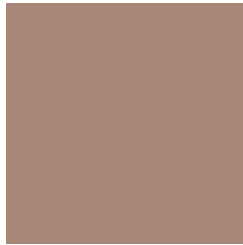
74.3980, -74.4580, -5.2260



9.9110, -9.9950, -0.5790

Previews

White Background



This preview shows how the YIQ color 143.4450, 23.6120, 1.5960 looks on a white background.

Color Contrast Check

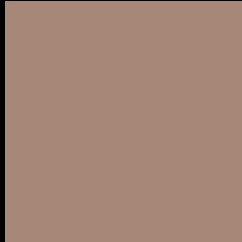
Large Text (above 18pt) WCAG AA ✓ Pass

Any Text WCAG AA × Fail

Large Text (above 18pt) WCAG AAA × Fail

Any Text WCAG AAA × Fail

Black Background



This preview shows how the YIQ color 143.4450, 23.6120, 1.5960 looks on a black background.

Color Contrast Check

Large Text (above 18pt) WCAG AA ✓ Pass

Any Text WCAG AA ✓ Pass

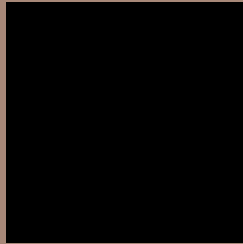
Large Text (above 18pt) WCAG AAA ✓ Pass

Any Text WCAG AAA × Fail

If you want to check with other color combinations, try the [Color Contrast Checker](#).

YIQ 143.4450, 23.6120, 1.5960

Background



This preview shows how black text looks on a background with the YIQ color 143.4450, 23.6120, 1.5960.



This preview shows how white text looks on a background with the YIQ color 143.4450, 23.6120,

1.5960.

Color Blindness Simulation

Color vision deficiency is a very complex topic, and I could not describe the different causes any better than Wikipedia does, so if you want to learn more, you should check out their [article about color blindness](#).

Dichromacy



Original Color

143.4450, 23.6120, 1.5960

Protanopia

142.2260, 10.8670, -4.2130

Deuteranopia

143.1350, 21.5490, 0.4370



Tritanopia

145.2030, 18.8420, 10.9540

Trichromacy



Original Color

143.4450, 23.6120, 1.5960

Protanomaly

142.7320, 15.3140, -2.2060

Deuteranomaly

143.4340, 22.1450, 0.6490

Tritanomaly

144.5790, 20.5390, 7.7310

Monochromacy



Original Color

143.4450, 23.6120, 1.5960

Achromatopsia

143.0000, -0.0000, 0.0000

Achromatomaly

143.0180, 8.7570, 0.9890

CSS Examples

Text

The CSS property to change the color of the text to YIQ 143.4450, 23.6120, 1.5960 is called "color". The color property can be set on classes, ids or directly on the HTML element.

This example shows how text in the color `rgb(167, 136, 120)` looks like.

```
.text, #text, p{  
    color:rgb(167, 136, 120)  
}
```

If you want to add a text shadow in that color use the text-shadow property, you can generate a text shadow directly with our [CSS Text Shadow Generator](#).

Here you see how black text with a 4 pixel rgb(167, 136, 120) colored shadow looks like.

```
.shadow{ text-shadow: 4px 4px 2px rgb(167, 136, 120) }
```

Border

The CSS property to change the border of an element to YIQ 143.4450, 23.6120, 1.5960 is called "border". The border property can be set on classes, ids or directly on the HTML element.

This example shows the color as border, it can be applied via the CSS property "border" or "border-color".

```
.border, #border, table{ border:4px solid rgb(167, 136, 120) }
```


If only the border color should be changed use the property `border-color`.

```
.border{ border-color:rgb(167, 136, 120) }
```

If you want to add a box shadow in that color use:

Here you see how a box with a 4 pixel `rgb(167, 136, 120)` colored shadow looks like.

```
.boxshadow{ -moz-box-shadow:4px 4px 4px  
4px rgb(167, 136, 120); -webkit-box-  
shadow:4px 4px 4px 4px rgb(167, 136, 120);  
box-shadow:4px 4px 4px 4px rgb(167, 136,  
120) }
```

Background

The CSS property to change the background color of an element to YIQ 143.4450, 23.6120, 1.5960 is called "background". The background property can be set on classes, ids or directly on the HTML element.

```
.background, #background, body{  
background: rgb(167, 136, 120) }
```

If only the background color should be changed can be used:

```
.background{ background-color: rgb(167,  
136, 120) }
```

This example shows the color as background, it is applied via the CSS property "background".

To optimize and compress your CSS code, you can use our [online CSS compressor and optimizer](#) based on csstidy. If you want to create a linear or radial gradient as background or border, check our [CSS Gradient Generator](#).

Hey! You found this booklet interesting? Support Converting Colors with the new Membership Option!

The pro membership hides all ads, plus gives you double the colors in the color bucket, and more awesome pro features!

[Learn more, Memberships starting at \\$2.50/m!](#)

**Follow me
on Twitter!**

@ConvertingColor