

# Converting Colors

YIQ(143.8550, 54.3320, -4.4840)

Have a look what the booklet for  
YIQ(143.8550, 54.3320, -4.4840)  
contains.

<b>YIQ(143.8550, 54.3320, -4.4840)</b> .....	3
<b><i>Conversions</i></b> .....	4
<b><i>Details</i></b> .....	6
<b><i>Harmonies</i></b> .....	12
<b><i>Previews</i></b> .....	24
<b><i>Color Blindness Simulation</i></b> .....	28
<b><i>CSS Examples</i></b> .....	31

# Color

**YIQ(143.8550, 54.3320,  
-4.4840)**

# Conversions

## Conversions Part 1

<b>Format</b>	<b>Color</b>
Hex	C1844C
RGB	193, 132, 76
RGB Percent	76%, 52%, 30%
CMY	0.2430, 0.4824, 0.7017
CMYK	0.00, 0.32, 0.61, 0.24
HSL	29°, 49%, 53%
HSV	29°, 61%, 76%
XYZ	31.5541, 28.3594, 10.6604
YIQ	143.8550, 54.3320, -4.4840

# Conversions

## Conversions Part 2

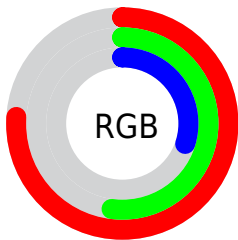
<b>Format</b>	<b>Color</b>
<b>RYB</b>	193, 183, 76
Decimal	12682316
CIELab	60.21, 17.71, 39.22
CIELCh	60, 43.035, 65.696
Yxy	28.3594, 0.4471, 0.4018
Android (android.graphics.Color)	4290872396 (0xFFC1844C)
YUV	143.8550, -33.4525, 43.1002
Hunter-Lab	53.2536, 12.5720, 25.4087

# Details

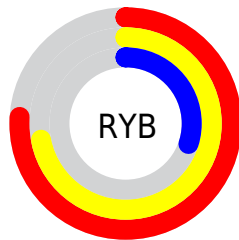
The YIQ color **143.8550, 54.3320, -4.4840** is a dark color, and the websafe version is hex **CC9966**. The color can be described as middle muted orange. A complement of this color would be **125.1450, -54.3320, 4.4840**, and the grayscale version is **144.0000, -0.0000, 0.0000**.

A 20% lighter version of the original color is **198.3070, 58.8710, -4.1450**, and **91.9900, 49.5180, -5.3460** is the 20% darker color. If you saturate the color by 10%, you get **135.8190, 63.1810, -5.1630**, and if you desaturate by 10%, it is **151.8910, 45.4830, -3.8050**.

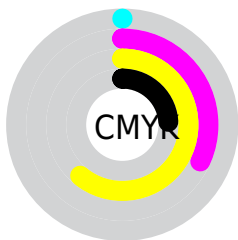
# Distribution



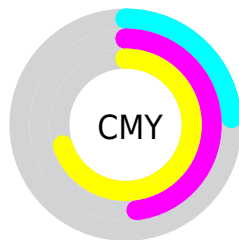
- Red (76%)
- Green (52%)
- Blue (30%)



- Red (76%)
- Yellow (72%)
- Blue (30%)



- Cyan (0%)
- Magenta (32%)
- Yellow (61%)
- Black (24%)



- Cyan (24%)
- Magenta (48%)
- Yellow (70%)

# Brightness & Saturation Gradients

These gradients show how the YIQ color 143.8550, 54.3320, -4.4840 changes by changing the brightness by 10 percent. The first figure shows a shift by +10% for each color and the second figure -10%.

Similar to the brightness gradients but the following saturation gradients show a change of the YIQ color 143.8550, 54.3320, -4.4840 by changing the saturation by 10% instead.



■ 143.8550, 54.3320,  
-4.4840

■ 143.8550, 54.3320,  
-4.4840

■ 255.0000, -0.0000,  
-0.0000

■ 117.7730, 51.6270,  
-5.0210

■ 198.3070, 58.8710,  
-4.1450

■ 91.9900, 49.5180,  
-5.3460

■ 218.7180, 44.2920,  
-9.7560

■ 67.2670, 47.1800,  
-7.0280

■ 238.2320, 27.9250,  
-16.0030

■ 45.9380, 38.1010,  
-2.1790

■ 249.6420, 15.0870,  
-14.6170

■ 25.5380, 27.7840,  
3.0800

■ 252.8340, 6.0990,  
-5.9090

■ 9.6820, 18.7510,  
7.0950

■ 0.0000, 0.0000,

0.0000

■ 143.8550, 54.3320,  
-4.4840

■ 143.8550, 54.3320,  
-4.4840

■ 135.8190, 63.1810,  
-5.1630

■ 151.8910, 45.4830,  
-3.8050

■ 127.6690, 72.3510,  
-6.1530

■ 160.0410, 36.3130,  
-2.8150

■ 119.6330, 81.2000,  
-6.8320

■ 168.0770, 27.4640,  
-2.1360

■ 111.7110, 89.7280,  
-7.2000

■ 176.1130, 18.6150,  
-1.4570

■ 184.2630, 9.4450,  
-0.4670

■ 192.2990, 0.5960,  
0.2120

■ 200.9220, -8.5280,  
0.3680

■ 208.9580,  
-17.3770, 1.0470

■ 217.1080,  
-26.5470, 2.0370

# Harmonies

## Analogous

The Analogous color harmony consists of three colors that are next to each other on the color wheel.



145.2820, 61.1600, 14.9520



143.8550, 54.3320, -4.4840



140.8920, 34.5740, -20.8660

# Triad

The Triadic color harmony groups three colors that are evenly spaced from another and form a triangle on the color wheel.



143.8550, 54.3320, -4.4840



114.0690, -93.8460, -39.3340



148.3240, -8.5790, 28.8370

# Complementary

The Complementary color scheme is a pair of colors which are on the opposite of each other on the color wheel.



143.8550, 54.3320, -4.4840



125.1450, -54.3320, 4.4840

# Split Complementary

Split-complementary colors differ from the complementary color scheme. The scheme consists of three colors, the original color and two neighbors of the complement color.



139.7740, -54.4250, 11.6790



143.8550, 54.3320, -4.4840



117.1130, -105.1730, -26.7810

# Square

The Square scheme is like the rectangle color scheme, but the four colors are evenly spaced on the color wheel.



143.8550, 54.3320, -4.4840



128.9060, -39.1030, -34.7430



116.5550, -111.8690, -15.5570



149.2330, 28.4660, 34.7860



# Rectangle

The Rectangle color scheme consists of four colors that form a rectangle on the color wheel.



143.8550, 54.3320, -4.4840



138.6120, 14.6310, -28.3850



116.5550, -111.8690, -15.5570



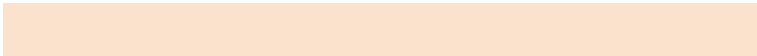
146.5610, -22.6080, 24.2720

# Sweetspot

The Sweet Spot groups the original color and five complimentary colors.



143.8550, 54.3320, -4.4840



230.7820, 21.0450, -1.4430



118.0510, 49.8300, 44.0860



113.5900, 12.8380, -1.3860



252.0000, 0.0000, 0.0000



125.0000, 0.0000, 0.0000



# Same Dimension

The Same Dimension uses a secret algorithm to generate beautiful new colors.



143.8550, 54.3320, -4.4840



173.3730, 84.8680, -7.2280



177.3140, 38.6570, -34.2950



92.9250, 4.5850, -0.4950



93.3380, 74.7810, -6.1390



19.2590, 15.2680, -1.3720



# Inverse Universe

The Inverse Universe completely reimagines the original color for something new.



125.1450, -54.3320, 4.4840



144.2140, -85.1430, 6.7050



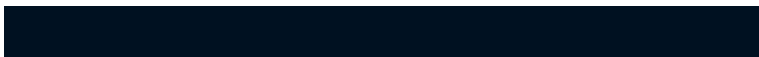
91.6860, -38.6570, 34.2950



91.0750, -4.5850, 0.4950



67.6620, -74.7810, 6.1390

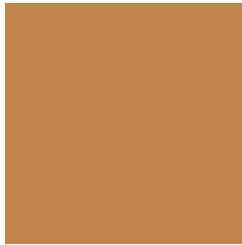


13.7410, -15.2680, 1.3720



# Previews

## White Background



This preview shows how the YIQ color 143.8550, 54.3320, -4.4840 looks on a white background.

## Color Contrast Check

Large Text (above 18pt) WCAG AA ✓ Pass

Any Text WCAG AA × Fail

Large Text (above 18pt) WCAG AAA × Fail

Any Text WCAG AAA × Fail



# Black Background



This preview shows how the YIQ color 143.8550, 54.3320, -4.4840 looks on a black background.

## Color Contrast Check

Large Text (above 18pt) WCAG AA ✓ Pass

Any Text WCAG AA ✓ Pass

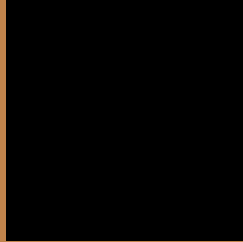
Large Text (above 18pt) WCAG AAA ✓ Pass

Any Text WCAG AAA × Fail

If you want to check with other color combinations, try the [Color Contrast Checker](#).

# YIQ 143.8550, 54.3320, -4.4840

## Background



This preview shows how black text looks on a background with the YIQ color 143.8550, 54.3320, -4.4840.



This preview shows how white text looks on a background with the YIQ color 143.8550, 54.3320, -4.4840.

-4.4840.

# Color Blindness Simulation

Color vision deficiency is a very complex topic, and I could not describe the different causes any better than Wikipedia does, so if you want to learn more, you should check out their [article about color blindness](#).

## Dichromacy



### Original Color

143.8550, 54.3320, -4.4840

### Protanopia

142.7760, 29.2090, -17.2470

### Deuteranopia

143.6640, 44.3840, -11.4240



## Tritanopia

147.5540, 40.0230, 18.0630

# Trichromacy



## Original Color

143.8550, 54.3320, -4.4840

## Protanomaly

143.2010, 38.3780, -12.7100

## Deuteranomaly

143.3980, 48.1890, -8.7950

## Tritanomaly

146.6220, 45.3430, 9.7510

# Monochromacy



## Original Color

143.8550, 54.3320, -4.4840

## Achromatopsia

144.0000, -0.0000, 0.0000

## Achromatomaly

144.1840, 19.8530, -1.8670

# CSS Examples

## Text

The CSS property to change the color of the text to YIQ 143.8550, 54.3320, -4.4840 is called "color". The color property can be set on classes, ids or directly on the HTML element.

This example shows how text in the color `rgb(193, 132, 76)` looks like.

```
.text, #text, p{  
    color:rgb(193, 132, 76)  
}
```

If you want to add a text shadow in that color use the text-shadow property, you can generate a text shadow directly with our [CSS Text Shadow Generator](#).

Here you see how black text with a 4 pixel rgb(193, 132, 76) colored shadow looks like.

```
.shadow{ text-shadow: 4px 4px 2px rgb(193, 132, 76) }
```

## Border

The CSS property to change the border of an element to YIQ 143.8550, 54.3320, -4.4840 is called "border". The border property can be set on classes, ids or directly on the HTML element.

This example shows the color as border, it can be applied via the CSS property "border" or "border-color".

```
.border, #border, table{ border:4px solid rgb(193, 132, 76) }
```



If only the border color should be changed use the property `border-color`.

```
.border{ border-color:rgb(193, 132, 76) }
```

If you want to add a box shadow in that color use:

Here you see how a box with a 4 pixel `rgb(193, 132, 76)` colored shadow looks like.

```
.boxshadow{ -moz-box-shadow:4px 4px 4px  
4px rgb(193, 132, 76); -webkit-box-  
shadow:4px 4px 4px 4px rgb(193, 132, 76);  
box-shadow:4px 4px 4px 4px rgb(193, 132,  
76) }
```

# Background

The CSS property to change the background color of an element to YIQ 143.8550, 54.3320, -4.4840 is called "background". The background property can be set on classes, ids or directly on the HTML element.

```
.background, #background, body{  
background: rgb(193, 132, 76) }
```

If only the background color should be changed can be used:

```
.background{ background-color: rgb(193,  
132, 76) }
```

This example shows the color as background, it is applied via the CSS property "background".

To optimize and compress your CSS code, you can use our [online CSS compressor and optimizer](#) based on csstidy. If you want to create a linear or radial gradient as background or border, check our [CSS Gradient Generator](#).

Hey! You found this booklet interesting? Support Converting Colors with the new Membership Option!

The pro membership hides all ads, plus gives you double the colors in the color bucket, and more awesome pro features!

**[Learn more, Memberships starting at \\$2.50/m!](#)**

**Follow me  
on Twitter!**

@ConvertingColor