

# Converting Colors

YIQ(144.5690, 26.4990, 9.8510)

Have a look what the booklet for  
YIQ(144.5690, 26.4990, 9.8510)  
contains.

<b>YIQ(144.5690, 26.4990, 9.8510)</b> .....	3
<b><i>Conversions</i></b> .....	4
<b><i>Details</i></b> .....	6
<b><i>Harmonies</i></b> .....	12
<b><i>Previews</i></b> .....	24
<b><i>Color Blindness Simulation</i></b> .....	28
<b><i>CSS Examples</i></b> .....	31

# Color

**YIQ(144.5690, 26.4990,  
9.8510)**

# Conversions

## Conversions Part 1

Format	Color
Hex	B08384
RGB	176, 131, 132
RGB Percent	69%, 51%, 52%
CMY	0.3097, 0.4863, 0.4822
CMYK	0.00, 0.26, 0.25, 0.31
HSL	359°, 22%, 60%
HSV	359°, 26%, 69%
XYZ	30.1911, 27.1275, 25.4842
YIQ	144.5690, 26.4990, 9.8510

# Conversions

## Conversions Part 2

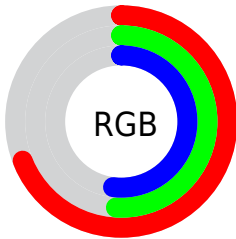
<b>Format</b>	<b>Color</b>
<b>RYB</b>	176, 131, 132
Decimal	11568004
CIELab	59.09, 17.48, 6.22
CIELCh	59, 18.553, 19.573
Yxy	27.1275, 0.3646, 0.3276
Android (android.graphics.Color)	4289758084 (0xFFB08384)
YUV	144.5690, -6.1965, 27.5650
Hunter-Lab	52.0841, 12.3225, 7.4488

# Details

The YIQ color **144.5690, 26.4990, 9.8510** is a light color, and the websafe version is hex **CC9999**. A complement of this color would be **162.4310, -26.4990, -9.8510**, and the grayscale version is **145.0000, 0.0000, -0.0000**.

A 20% lighter version of the original color is **198.4660, 28.2870, 10.4870**, and **93.4870, 23.7940, 9.3140** is the 20% darker color. If you saturate the color by 10%, you get **132.0650, 36.9060, 13.9780**, and if you desaturate by 10%, it is **157.0730, 16.0920, 5.7240**.

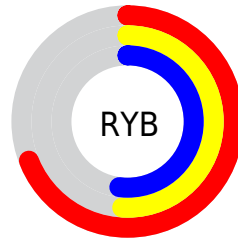
# Distribution



Red (69%)

Green (51%)

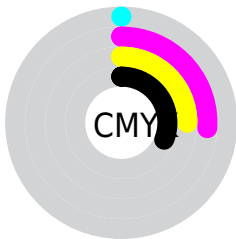
Blue (52%)



Red (69%)

Yellow (51%)

Blue (52%)

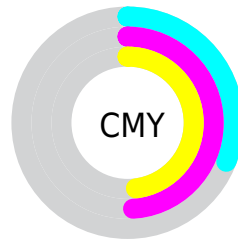


Cyan (0%)

Magenta (26%)

Yellow (25%)

Black (31%)



Cyan (31%)

Magenta (49%)

Yellow (48%)

# Brightness & Saturation Gradients

These gradients show how the YIQ color 144.5690, 26.4990, 9.8510 changes by changing the brightness by 10 percent. The first figure shows a shift by +10% for each color and the second figure -10%.

Similar to the brightness gradients but the following saturation gradients show a change of the YIQ color 144.5690, 26.4990, 9.8510 by changing the saturation by 10% instead.



■ 144.5690, 26.4990,  
9.8510

■ 144.5690, 26.4990,  
9.8510

255.0000, -0.0000,  
-0.0000

■ 118.9710, 25.3070,  
9.4270

■ 198.4660, 28.2870,  
10.4870

■ 93.4870, 23.7940,  
9.3140

■ 224.9710, 25.3070,  
9.4270

■ 69.8890, 22.6020,  
8.8900

■ 244.5990, 8.6190,  
3.4910

■ 46.9920, 20.8140,  
8.2540

■ 25.0950, 19.0260,  
7.6180

■ 8.1870, 15.7710,  
6.0350

■ 0.0000, 0.0000,

0.0000

144.5690, 26.4990,  
9.8510

144.5690, 26.4990,  
9.8510

132.0650, 36.9060,  
13.9780

157.0730, 16.0920,  
5.7240

120.1480, 47.0380,  
17.5820

168.9900, 5.9600,  
2.1200

107.5300, 57.7660,  
21.3980

181.6080, -4.7680,  
-1.6960

95.6130, 67.8980,  
25.0020

193.5250,  
-14.9000, -5.3000

83.1090, 78.3050,  
29.1290

206.0290,  
-25.3070, -9.4270

70.6050, 88.7120,  
33.2560

218.5330,  
-35.7140, -13.5540

■ 58.6880, 98.8440,  
36.8600

■ 230.4500,  
-45.8460, -17.1580

■ 53.0800, 103.6120,  
38.5560

■ 231.3790,  
-47.0840, -16.7480

# Harmonies

## Analogous

The Analogous color harmony consists of three colors that are next to each other on the color wheel.



145.0120, 18.0620, 14.0780



144.5690, 26.4990, 9.8510



143.5380, 27.7840, 3.0800

# Triad

The Triadic color harmony groups three colors that are evenly spaced from another and form a triangle on the color wheel.



144.5690, 26.4990, 9.8510



138.6320, -5.3160, -13.7960



139.6350, -26.5930, 2.8710

# Complementary

The Complementary color scheme is a pair of colors which are on the opposite of each other on the color wheel.



144.5690, 26.4990, 9.8510



162.4310, -26.4990, -9.8510

# Split Complementary

Split-complementary colors differ from the complementary color scheme. The scheme consists of three colors, the original color and two neighbors of the complement color.



136.2870, -34.6610, -5.1010



144.5690, 26.4990, 9.8510



136.4330, -20.8130, -13.7810

# Square

The Square scheme is like the rectangle color scheme, but the four colors are evenly spaced on the color wheel.



144.5690, 26.4990, 9.8510



140.5260, 9.7220, -10.9980



134.9680, -32.5050, -11.1370



143.1640, -11.7850, 9.8390



# Rectangle

The Rectangle color scheme consists of four colors that form a rectangle on the color wheel.



144.5690, 26.4990, 9.8510



142.5220, 24.7130, -1.8390



134.9680, -32.5050, -11.1370



138.7870, -30.0770, -0.0690

# Sweetspot

The Sweet Spot groups the original color and five complimentary colors.



144.5690, 26.4990, 9.8510



216.7950, 11.0030, 4.3390



149.2860, 11.7790, 23.3230



106.7020, 6.8310, 2.8550



242.0000, -0.0000, 0.0000



115.0000, -0.0000, 0.0000



# Same Dimension

The Same Dimension uses a secret algorithm to generate beautiful new colors.



144.5690, 26.4990, 9.8510



179.7560, 42.2700, 15.8860



156.7820, 21.0450, -1.4430



82.8050, 5.0430, 2.2190



46.2030, 89.9040, 33.6800



7.8880, 15.1750, 5.8230



# Inverse Universe

The Inverse Universe completely reimagines the original color for something new.



144.5690, 26.4990, 9.8510



179.7560, 42.2700, 15.8860



150.2180, -21.0450, 1.4430



82.8050, 5.0430, 2.2190



46.2030, 89.9040, 33.6800



7.8880, 15.1750, 5.8230



# Previews

## White Background



This preview shows how the YIQ color 144.5690, 26.4990, 9.8510 looks on a white background.

## Color Contrast Check

Large Text (above 18pt) WCAG AA ✓ Pass

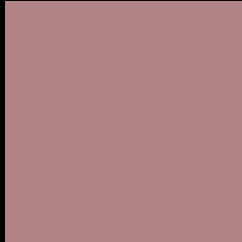
Any Text WCAG AA × Fail

Large Text (above 18pt) WCAG AAA × Fail

Any Text WCAG AAA × Fail



# Black Background



This preview shows how the YIQ color 144.5690, 26.4990, 9.8510 looks on a black background.

## Color Contrast Check

Large Text (above 18pt) WCAG AA ✓ Pass

Any Text WCAG AA ✓ Pass

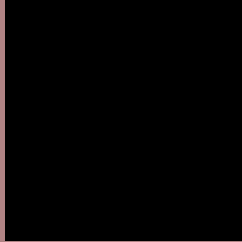
Large Text (above 18pt) WCAG AAA ✓ Pass

Any Text WCAG AAA × Fail

If you want to check with other color combinations, try the [Color Contrast Checker](#).

# YIQ 144.5690, 26.4990, 9.8510

## Background



This preview shows how black text looks on a background with the YIQ color 144.5690, 26.4990, 9.8510.



This preview shows how white text looks on a background with the YIQ color 144.5690, 26.4990,

9.8510.

# Color Blindness Simulation

Color vision deficiency is a very complex topic, and I could not describe the different causes any better than Wikipedia does, so if you want to learn more, you should check out their [article about color blindness](#).

## Dichromacy



### Original Color

144.5690, 26.4990, 9.8510

### Protanopia

142.7400, 3.6680, -0.3960

### Deuteranopia

143.4920, 16.2300, 3.2220



## Tritanopia

145.1930, 24.8020, 13.0740

# Trichromacy



## Original Color

144.5690, 26.4990, 9.8510

## Protanomaly

143.4530, 11.9660, 3.4060

## Deuteranomaly

143.8130, 19.7600, 5.3280

## Tritanomaly

144.8510, 25.7650, 12.1410

# Monochromacy



## Original Color

144.5690, 26.4990, 9.8510

## Achromatopsia

145.0000, 0.0000, -0.0000

## Achromatomaly

144.7840, 9.5360, 3.3920

# CSS Examples

## Text

The CSS property to change the color of the text to YIQ 144.5690, 26.4990, 9.8510 is called "color". The color property can be set on classes, ids or directly on the HTML element.

This example shows how text in the color `rgb(176, 131, 132)` looks like.

```
.text, #text, p{  
    color:rgb(176, 131, 132)  
}
```

If you want to add a text shadow in that color use the text-shadow property, you can generate a text shadow directly with our [CSS Text Shadow Generator](#).

Here you see how black text with a 4 pixel rgb(176, 131, 132) colored shadow looks like.

```
.shadow{ text-shadow: 4px 4px 2px rgb(176, 131, 132) }
```

## Border

The CSS property to change the border of an element to YIQ 144.5690, 26.4990, 9.8510 is called "border". The border property can be set on classes, ids or directly on the HTML element.

This example shows the color as border, it can be applied via the CSS property "border" or "border-color".

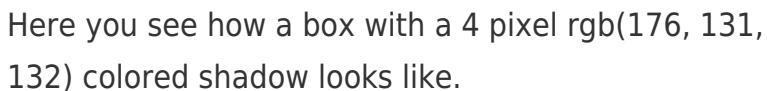
```
.border, #border, table{ border:4px solid rgb(176, 131, 132) }
```



If only the border color should be changed use the property `border-color`.

```
.border{ border-color:rgb(176, 131, 132) }
```

If you want to add a box shadow in that color use:



Here you see how a box with a 4 pixel `rgb(176, 131, 132)` colored shadow looks like.

```
.boxshadow{ -moz-box-shadow:4px 4px 4px  
4px rgb(176, 131, 132); -webkit-box-  
shadow:4px 4px 4px 4px rgb(176, 131, 132);  
box-shadow:4px 4px 4px 4px rgb(176, 131,  
132) }
```

# Background

The CSS property to change the background color of an element to YIQ 144.5690, 26.4990, 9.8510 is called "background". The background property can be set on classes, ids or directly on the HTML element.

```
.background, #background, body{  
background: rgb(176, 131, 132) }
```

If only the background color should be changed can be used:

```
.background{ background-color: rgb(176,  
131, 132) }
```

This example shows the color as background, it is applied via the CSS property "background".

To optimize and compress your CSS code, you can use our [online CSS compressor and optimizer](#) based on csstidy. If you want to create a linear or radial gradient as background or border, check our [CSS Gradient Generator](#).

Hey! You found this booklet interesting? Support Converting Colors with the new Membership Option!

The pro membership hides all ads, plus gives you double the colors in the color bucket, and more awesome pro features!

**[Learn more, Memberships starting at \\$2.50/m!](#)**

**Follow me  
on Twitter!**

@ConvertingColor