

Converting Colors

YIQ(145.4120, 47.8560, 57.8400)

Have a look what the booklet for
YIQ(145.4120, 47.8560, 57.8400)
contains.

YIQ(145.4120, 47.8560, 57.8400)	3
<i>Conversions</i>	4
<i>Details</i>	6
<i>Harmonies</i>	12
<i>Previews</i>	24
<i>Color Blindness Simulation</i>	28
<i>CSS Examples</i>	31

Color

**YIQ(145.4120, 47.8560,
57.8400)**

Conversions

Conversions Part 1

Format	Color
Hex	E35FBF
RGB	227, 95, 191
RGB Percent	89%, 37%, 75%
CMY	0.1094, 0.6276, 0.2509
CMYK	0.00, 0.58, 0.16, 0.11
HSL	316°, 70%, 63%
HSV	316°, 58%, 89%
XYZ	45.2031, 28.2838, 52.3841
YIQ	145.4120, 47.8560, 57.8400

Conversions

Conversions Part 2

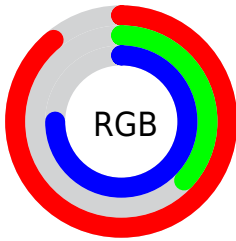
Format	Color
R _Y B	227, 95, 191
Decimal	14901183
CIE Lab	60.14, 62.08, -25.43
CIE LCh	60, 67.083, 337.722
Yxy	28.2838, 0.3591, 0.2247
Android (android.graphics.Color)	4293091263 (0xFFE35FBF)
YUV	145.4120, 22.4749, 71.5527
Hunter-Lab	53.1825, 58.6489, -21.1722

Details

The YIQ color **145.4120, 47.8560, 57.8400** is a light color, and the websafe version is hex **FF66CC**. The color can be described as light muted rose. A complement of this color would be **176.5880, -47.8560, -57.8400**, and the grayscale version is **145.0000, 0.0000, -0.0000**.

A 20% lighter version of the original color is **193.1540, 30.8470, 52.2150**, and **85.8080, 46.8010, 60.4410** is the 20% darker color. If you saturate the color by 10%, you get **131.2270, 56.1070, 68.0030**, and if you desaturate by 10%, it is **159.5970, 39.6050, 47.6770**.

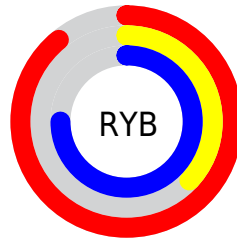
Distribution



Red (89%)

Green (37%)

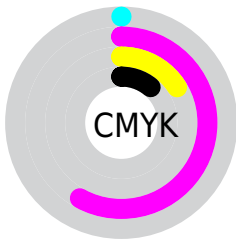
Blue (75%)



Red (89%)

Yellow (37%)

Blue (75%)

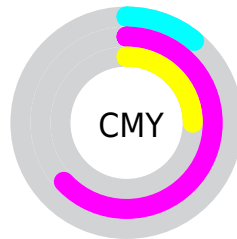


Cyan (0%)

Magenta (58%)

Yellow (16%)

Black (11%)



Cyan (11%)

Magenta (63%)

Yellow (25%)

Brightness & Saturation Gradients

These gradients show how the YIQ color 145.4120, 47.8560, 57.8400 changes by changing the brightness by 10 percent. The first figure shows a shift by +10% for each color and the second figure -10%.

Similar to the brightness gradients but the following saturation gradients show a change of the YIQ color 145.4120, 47.8560, 57.8400 by changing the saturation by 10% instead.

145.4120, 47.8560,
57.8400

145.4120, 47.8560,
57.8400

255.0000, -0.0000,
-0.0000

116.6400, 47.2140,
58.4620

193.1540, 30.8470,
52.2150

86.1070, 47.3970,
60.6530

210.9750, 20.6250,
39.2250

54.6280, 47.4880,
64.5120

227.9980, 12.6500,
24.0580

43.4060, 38.8250,
50.8010

245.0210, 4.6750,
8.8910

32.5970, 30.4370,
37.6130

22.7280, 22.2780,
25.7820

10.8370, 11.1850,

12.0570

■ 0.0000, 0.0000,
0.0000

■ 145.4120, 47.8560,
57.8400

■ 145.4120, 47.8560,
57.8400

■ 131.2270, 56.1070,
68.0030

■ 159.5970, 39.6050,
47.6770

■ 117.6290, 64.0830,
77.6430

■ 173.1950, 31.6290,
38.0370

■ 103.3300, 72.6550,
87.4950

■ 187.4940, 23.0570,
28.1850

■ 89.1450, 80.9060,
97.6580

■ 201.6790, 14.8060,
18.0220

■ 86.6830, 82.3270,
99.4390

■ 215.2770, 6.8300,
8.3820

■ 229.4620, -1.4210,
-1.7810

■ 243.6470, -9.6720,
-11.9440

■ 245.0320,
-12.1940, -10.2900

■ 245.7160,
-14.1200, -8.4240

Harmonies

Analogous

The Analogous color harmony consists of three colors that are next to each other on the color wheel.



148.4940, -11.3330, 45.7150



145.4120, 47.8560, 57.8400



139.1060, 83.5280, 50.1200

Triad

The Triadic color harmony groups three colors that are evenly spaced from another and form a triangle on the color wheel.



145.4120, 47.8560, 57.8400



133.8300, 54.3390, -43.1730



125.0010, -116.3610, -22.2570

Complementary

The Complementary color scheme is a pair of colors which are on the opposite of each other on the color wheel.



145.4120, 47.8560, 57.8400



176.5880, -47.8560, -57.8400

Split Complementary

Split-complementary colors differ from the complementary color scheme. The scheme consists of three colors, the original color and two neighbors of the complement color.



119.0900, -98.3390, -40.5070



145.4120, 47.8560, 57.8400



127.7710, 0.1010, -51.4110

Square

The Square scheme is like the rectangle color scheme, but the four colors are evenly spaced on the color wheel.



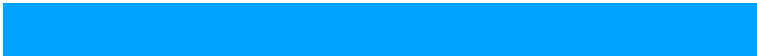
145.4120, 47.8560, 57.8400



138.1890, 82.2100, -14.1260



110.3750, -77.9330, -57.9090



124.6370, -126.3590, -6.2550

Rectangle

The Rectangle color scheme consists of four colors that form a rectangle on the color wheel.



145.4120, 47.8560, 57.8400



138.5730, 91.7380, 33.4820



110.3750, -77.9330, -57.9090



123.5360, -110.8580, -28.3780

Sweetspot

The Sweet Spot groups the original color and five complimentary colors.



145.4120, 47.8560, 57.8400



228.3910, 15.6770, 18.7570



120.5130, -21.5120, 48.4720



111.9400, 9.3970, 11.4210



0.0000, 0.0000, 0.0000



128.0000, -0.0000, -0.0000

Same Dimension

The Same Dimension uses a secret algorithm to generate beautiful new colors.



145.4120, 47.8560, 57.8400



144.9280, 64.6790, 77.8550



138.0020, 68.7210, 37.6250



107.6140, 4.2630, 5.3430



68.3410, 64.9540, 78.3780



19.4670, 18.5190, 22.3190

Inverse Universe

The Inverse Universe completely reimagines the original color for something new.



145.4120, 47.8560, 57.8400



144.9280, 64.6790, 77.8550



183.9980, -68.7210, -37.6250



107.6140, 4.2630, 5.3430



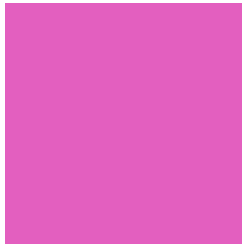
68.3410, 64.9540, 78.3780



19.4670, 18.5190, 22.3190

Previews

White Background



This preview shows how the YIQ color 145.4120, 47.8560, 57.8400 looks on a white background.

Color Contrast Check

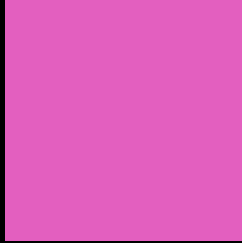
Large Text (above 18pt) WCAG AA ✓ Pass

Any Text WCAG AA × Fail

Large Text (above 18pt) WCAG AAA × Fail

Any Text WCAG AAA × Fail

Black Background



This preview shows how the YIQ color 145.4120, 47.8560, 57.8400 looks on a black background.

Color Contrast Check

Large Text (above 18pt) WCAG AA ✓ Pass

Any Text WCAG AA ✓ Pass

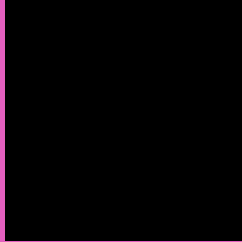
Large Text (above 18pt) WCAG AAA ✓ Pass

Any Text WCAG AAA × Fail

If you want to check with other color combinations, try the [Color Contrast Checker](#).

YIQ 145.4120, 47.8560, 57.8400

Background



This preview shows how black text looks on a background with the YIQ color 145.4120, 47.8560, 57.8400.



This preview shows how white text looks on a background with the YIQ color 145.4120, 47.8560,

57.8400.

Color Blindness Simulation

Color vision deficiency is a very complex topic, and I could not describe the different causes any better than Wikipedia does, so if you want to learn more, you should check out their [article about color blindness](#).

Dichromacy



Original Color

145.4120, 47.8560, 57.8400

Protanopia

144.0190, -44.5690, 20.2870

Deuteranopia

146.6630, -14.6280, 11.8040



Tritanopia

145.2040, 61.8000, 25.3840

Trichromacy



Original Color

145.4120, 47.8560, 57.8400



Protanomaly

144.8170, -11.2850, 33.8270



Deuteranomaly

146.5940, 8.1560, 28.4120



Tritanomaly

145.5430, 56.8920, 37.2440

Monochromacy



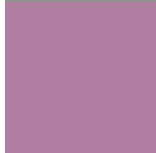
Original Color

145.4120, 47.8560, 57.8400



Achromatopsia

145.0000, 0.0000, -0.0000



Achromatomaly

145.3420, 17.3730, 21.0610

CSS Examples

Text

The CSS property to change the color of the text to YIQ 145.4120, 47.8560, 57.8400 is called "color". The color property can be set on classes, ids or directly on the HTML element.

This example shows how text in the color `rgb(227, 95, 191)` looks like.

```
.text, #text, p{  
    color:rgb(227, 95, 191)  
}
```

If you want to add a text shadow in that color use the text-shadow property, you can generate a text shadow directly with our [CSS Text Shadow Generator](#).

Here you see how black text with a 4 pixel rgb(227, 95, 191) colored shadow looks like.

```
.shadow{ text-shadow: 4px 4px 2px rgb(227, 95, 191) }
```

Border

The CSS property to change the border of an element to YIQ 145.4120, 47.8560, 57.8400 is called "border". The border property can be set on classes, ids or directly on the HTML element.

This example shows the color as border, it can be applied via the CSS property "border" or "border-color".

```
.border, #border, table{ border:4px solid rgb(227, 95, 191) }
```


If only the border color should be changed use the property `border-color`.

```
.border{ border-color:rgb(227, 95, 191) }
```

If you want to add a box shadow in that color use:

Here you see how a box with a 4 pixel `rgb(227, 95, 191)` colored shadow looks like.

```
.boxshadow{ -moz-box-shadow:4px 4px 4px  
4px rgb(227, 95, 191); -webkit-box-  
shadow:4px 4px 4px 4px rgb(227, 95, 191);  
box-shadow:4px 4px 4px 4px rgb(227, 95,  
191) }
```

Background

The CSS property to change the background color of an element to YIQ 145.4120, 47.8560, 57.8400 is called "background". The background property can be set on classes, ids or directly on the HTML element.

```
.background, #background, body{  
background: rgb(227, 95, 191) }
```

If only the background color should be changed can be used:

```
.background{ background-color: rgb(227, 95,  
191) }
```

This example shows the color as background, it is applied via the CSS property "background".

To optimize and compress your CSS code, you can use our [online CSS compressor and optimizer](#) based on csstidy. If you want to create a linear or radial gradient as background or border, check our [CSS Gradient Generator](#).

Hey! You found this booklet interesting? Support Converting Colors with the new Membership Option!

The pro membership hides all ads, plus gives you double the colors in the color bucket, and more awesome pro features!

[Learn more, Memberships starting at \\$2.50/m!](#)

**Follow me
on Twitter!**

@ConvertingColor