

Converting Colors

YIQ(145.4330, 41.0810, -1.1190)

Have a look what the booklet for
YIQ(145.4330, 41.0810, -1.1190)
contains.

YIQ(145.4330, 41.0810, -1.1190)	3
<i>Conversions</i>	4
<i>Details</i>	6
<i>Harmonies</i>	12
<i>Previews</i>	24
<i>Color Blindness Simulation</i>	28
<i>CSS Examples</i>	31

Color

**YIQ(145.4330, 41.0810,
-1.1190)**

Conversions

Conversions Part 1

Format	Color
Hex	B88762
RGB	184, 135, 98
RGB Percent	72%, 53%, 38%
CMY	0.2783, 0.4707, 0.6155
CMYK	0.00, 0.27, 0.47, 0.28
HSL	26°, 38%, 55%
HSV	26°, 47%, 72%
XYZ	30.6409, 28.3982, 15.4338
YIQ	145.4330, 41.0810, -1.1190

Conversions

Conversions Part 2

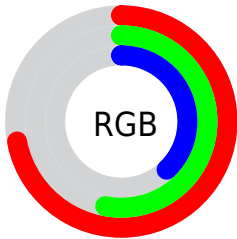
Format	Color
RYB	184, 163, 98
Decimal	12093282
CIELab	60.25, 14.19, 27.18
CIELCh	60, 30.661, 62.433
Yxy	28.3982, 0.4114, 0.3813
Android (android.graphics.Color)	4290283362 (0xFFB88762)
YUV	145.4330, -23.3845, 33.8233
Hunter-Lab	53.2900, 9.3771, 20.1314

Details

The YIQ color **145.4330, 41.0810, -1.1190** is a dark color, and the websafe version is hex **CC9966**. A complement of this color would be **136.5670, -41.0810, 1.1190**, and the grayscale version is **146.0000, -0.0000, -0.0000**.

A 20% lighter version of the original color is **199.7000, 44.7030, -0.6810**, and **94.2800, 37.1380, -1.2460** is the 20% darker color. If you saturate the color by 10%, you get **136.9240, 49.8840, -0.9640**, and if you desaturate by 10%, it is **153.3550, 32.5530, -0.7510**.

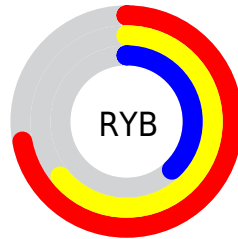
Distribution



Red (72%)

Green (53%)

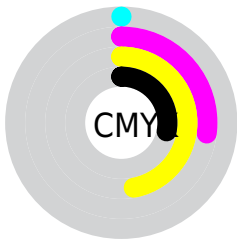
Blue (38%)



Red (72%)

Yellow (64%)

Blue (38%)

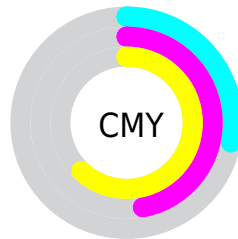


Cyan (0%)

Magenta (27%)

Yellow (47%)

Black (28%)



Cyan (28%)

Magenta (47%)

Yellow (62%)

Brightness & Saturation Gradients

These gradients show how the YIQ color 145.4330, 41.0810, -1.1190 changes by changing the brightness by 10 percent. The first figure shows a shift by +10% for each color and the second figure -10%.

Similar to the brightness gradients but the following saturation gradients show a change of the YIQ color 145.4330, 41.0810, -1.1190 by changing the saturation by 10% instead.

■ 145.4330, 41.0810,
-1.1190

■ 145.4330, 41.0810,
-1.1190

■ 255.0000, -0.0000,
-0.0000

■ 119.6500, 38.9720,
-1.4440

■ 199.7000, 44.7030,
-0.6810

■ 94.2800, 37.1380,
-1.2460

■ 223.1010, 36.0840,
-4.1720

■ 70.1980, 34.4330,
-1.7830

■ 243.3160, 19.1210,
-10.6310

■ 46.7740, 32.6910,
-3.2530

■ 252.3780, 7.3830,
-7.1530

■ 26.4020, 25.1710,
0.8750

■ 8.3720, 16.6880,
5.9360

■ 0.0000, 0.0000,

0.0000

■ 145.4330, 41.0810,
-1.1190

■ 145.4330, 41.0810,
-1.1190

■ 136.9240, 49.8840,
-0.9640

■ 153.3550, 32.5530,
-0.7510

■ 128.8880, 58.7330,
-1.6430

■ 161.9780, 23.4290,
-0.5950

■ 120.3790, 67.5360,
-1.4880

■ 169.9000, 14.9010,
-0.2270

■ 112.3430, 76.3850,
-2.1670

■ 178.5230, 5.7770,
-0.0710

■ 104.4210, 84.9130,
-2.5350

■ 186.4450, -2.7510,
0.2970

■ 101.3890, 87.9390,
-2.3090

■ 194.9540,
-11.5540, 0.1420

■ 202.9900,
-20.4030, 0.8210

■ 211.4990,
-29.2060, 0.6660

■ 218.5090,
-35.1660, -1.4540

Harmonies

Analogous

The Analogous color harmony consists of three colors that are next to each other on the color wheel.



146.9040, 44.6090, 12.0410



145.4330, 41.0810, -1.1190



143.0410, 27.1450, -12.8790

Triad

The Triadic color harmony groups three colors that are evenly spaced from another and form a triangle on the color wheel.



145.4330, 41.0810, -1.1190



130.7110, -51.2550, -23.7590



147.6410, -8.3940, 19.9740

Complementary

The Complementary color scheme is a pair of colors which are on the opposite of each other on the color wheel.



145.4330, 41.0810, -1.1190



136.5670, -41.0810, 1.1190

Split Complementary

Split-complementary colors differ from the complementary color scheme. The scheme consists of three colors, the original color and two neighbors of the complement color.



142.1640, -38.1480, 8.5400



145.4330, 41.0810, -1.1190



126.8090, -71.8420, -19.6020

Square

The Square scheme is like the rectangle color scheme, but the four colors are evenly spaced on the color wheel.



145.4330, 41.0810, -1.1190



136.5110, -21.4530, -24.2130



133.5040, -63.1330, -6.7250



149.3360, 17.5100, 24.0860

Rectangle

The Rectangle color scheme consists of four colors that form a rectangle on the color wheel.



145.4330, 41.0810, -1.1190



141.6370, 13.4830, -18.5890



133.5040, -63.1330, -6.7250



146.5580, -18.5260, 16.3700

Sweetspot

The Sweet Spot groups the original color and five complimentary colors.



145.4330, 41.0810, -1.1190



224.9710, 16.1390, -0.6370



129.4140, 35.2060, 33.7820



110.5620, 10.0410, -0.2550



247.0000, -0.0000, -0.0000



120.0000, -0.0000, -0.0000

Same Dimension

The Same Dimension uses a secret algorithm to generate beautiful new colors.



145.4330, 41.0810, -1.1190



179.4110, 64.5100, -1.7140



170.0870, 29.5310, -23.0850



88.0390, 4.2640, -0.1840



85.9730, 74.5510, -1.9690



15.4160, 13.3880, -0.3400

Inverse Universe

The Inverse Universe completely reimagines the original color for something new.



136.5670, -41.0810, 1.1190



165.5890, -64.5100, 1.7140



111.9130, -29.5310, 23.0850



86.9610, -4.2640, 0.1840



70.0270, -74.5510, 1.9690



12.5840, -13.3880, 0.3400

Previews

White Background



This preview shows how the YIQ color 145.4330, 41.0810, -1.1190 looks on a white background.

Color Contrast Check

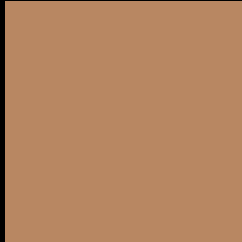
Large Text (above 18pt) WCAG AA ✓ Pass

Any Text WCAG AA × Fail

Large Text (above 18pt) WCAG AAA × Fail

Any Text WCAG AAA × Fail

Black Background



This preview shows how the YIQ color 145.4330, 41.0810, -1.1190 looks on a black background.

Color Contrast Check

Large Text (above 18pt) WCAG AA ✓ Pass

Any Text WCAG AA ✓ Pass

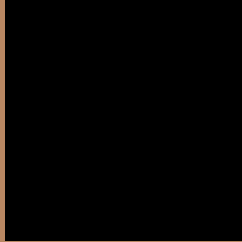
Large Text (above 18pt) WCAG AAA ✓ Pass

Any Text WCAG AAA × Fail

If you want to check with other color combinations, try the [Color Contrast Checker](#).

YIQ 145.4330, 41.0810, -1.1190

Background



This preview shows how black text looks on a background with the YIQ color 145.4330, 41.0810, -1.1190.



This preview shows how white text looks on a background with the YIQ color 145.4330, 41.0810, -1.1190.

-1.1190.

Color Blindness Simulation

Color vision deficiency is a very complex topic, and I could not describe the different causes any better than Wikipedia does, so if you want to learn more, you should check out their [article about color blindness](#).

Dichromacy



Original Color

145.4330, 41.0810, -1.1190

Protanopia

143.6860, 20.9550, -10.8290

Deuteranopia

144.6770, 34.3420, -5.6420



Tritanopia

148.3680, 31.6790, 15.0950

Trichromacy



Original Color

145.4330, 41.0810, -1.1190

Protanomaly

144.2140, 28.3360, -6.9280

Deuteranomaly

145.2860, 37.0010, -4.2710

Tritanomaly

147.5330, 35.3480, 9.1720

Monochromacy



Original Color

145.4330, 41.0810, -1.1190

Achromatopsia

145.0000, 0.0000, -0.0000

Achromatomaly

144.9000, 14.9010, -0.2270

CSS Examples

Text

The CSS property to change the color of the text to YIQ 145.4330, 41.0810, -1.1190 is called "color". The color property can be set on classes, ids or directly on the HTML element.

This example shows how text in the color `rgb(184, 135, 98)` looks like.

```
.text, #text, p{  
    color:rgb(184, 135, 98)  
}
```

If you want to add a text shadow in that color use the text-shadow property, you can generate a text shadow directly with our [CSS Text Shadow Generator](#).

Here you see how black text with a 4 pixel rgb(184, 135, 98) colored shadow looks like.

```
.shadow{ text-shadow: 4px 4px 2px rgb(184, 135, 98) }
```

Border

The CSS property to change the border of an element to YIQ 145.4330, 41.0810, -1.1190 is called "border". The border property can be set on classes, ids or directly on the HTML element.

This example shows the color as border, it can be applied via the CSS property "border" or "border-color".

```
.border, #border, table{ border:4px solid rgb(184, 135, 98) }
```


If only the border color should be changed use the property `border-color`.

```
.border{ border-color:rgb(184, 135, 98) }
```

If you want to add a box shadow in that color use:

Here you see how a box with a 4 pixel `rgb(184, 135, 98)` colored shadow looks like.

```
.boxshadow{ -moz-box-shadow:4px 4px 4px  
4px rgb(184, 135, 98); -webkit-box-  
shadow:4px 4px 4px 4px rgb(184, 135, 98);  
box-shadow:4px 4px 4px 4px rgb(184, 135,  
98) }
```

Background

The CSS property to change the background color of an element to YIQ 145.4330, 41.0810, -1.1190 is called "background". The background property can be set on classes, ids or directly on the HTML element.

```
.background, #background, body{  
background: rgb(184, 135, 98) }
```

If only the background color should be changed can be used:

```
.background{ background-color: rgb(184,  
135, 98) }
```

This example shows the color as background, it is applied via the CSS property "background".

To optimize and compress your CSS code, you can use our [online CSS compressor and optimizer](#) based on csstidy. If you want to create a linear or radial gradient as background or border, check our [CSS Gradient Generator](#).

Hey! You found this booklet interesting? Support Converting Colors with the new Membership Option!

The pro membership hides all ads, plus gives you double the colors in the color bucket, and more awesome pro features!

[Learn more, Memberships starting at \\$2.50/m!](#)

**Follow me
on Twitter!**

@ConvertingColor