

Converting Colors

YIQ(145.4960, 19.5750, 14.1910)

Have a look what the booklet for
YIQ(145.4960, 19.5750, 14.1910)
contains.

YIQ(145.4960, 19.5750, 14.1910)	3
<i>Conversions</i>	4
<i>Details</i>	6
<i>Harmonies</i>	12
<i>Previews</i>	24
<i>Color Blindness Simulation</i>	28
<i>CSS Examples</i>	31

Color

**YIQ(145.4960, 19.5750,
14.1910)**

Conversions

Conversions Part 1

Format	Color
Hex	AD8394
RGB	173, 131, 148
RGB Percent	68%, 51%, 58%
CMY	0.3215, 0.4863, 0.4195
CMYK	0.00, 0.24, 0.14, 0.32
HSL	336°, 20%, 60%
HSV	336°, 24%, 68%
XYZ	30.7003, 27.2540, 31.6663
YIQ	145.4960, 19.5750, 14.1910

Conversions

Conversions Part 2

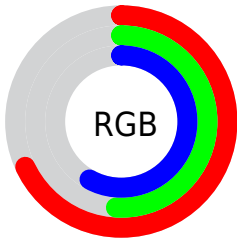
Format	Color
R_{YB}	173, 131, 148
Decimal	11371412
CIE _{Lab}	59.21, 18.89, -2.84
CIE _{LCh}	59, 19.098, 351.454
Yxy	27.2540, 0.3426, 0.3041
Android (android.graphics.Color)	4289561492 (0xFFAD8394)
YUV	145.4960, 1.2345, 24.1210
Hunter-Lab	52.2053, 13.6110, 0.5801

Details

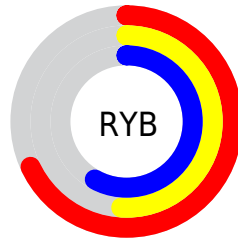
The YIQ color **145.4960, 19.5750, 14.1910** is a light color, and the websafe version is hex **CC9999**. A complement of this color would be **158.5040, -19.5750, -14.1910**, and the grayscale version is **145.0000, 0.0000, -0.0000**.

A 20% lighter version of the original color is **199.5070, 21.0420, 15.1380**, and **94.4850, 18.1080, 13.2440** is the 20% darker color. If you saturate the color by 10%, you get **134.3770, 27.4600, 19.9720**, and if you desaturate by 10%, it is **156.6150, 11.6900, 8.4100**.

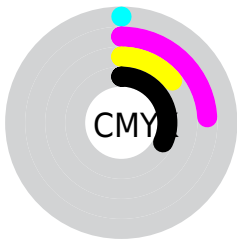
Distribution



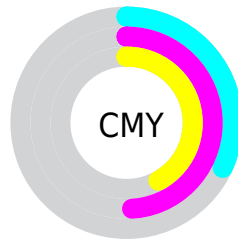
- Red (68%)
- Green (51%)
- Blue (58%)



- Red (68%)
- Yellow (51%)
- Blue (58%)



- Cyan (0%)
- Magenta (24%)
- Yellow (14%)
- Black (32%)



- Cyan (32%)
- Magenta (49%)
- Yellow (42%)

Brightness & Saturation Gradients

These gradients show how the YIQ color 145.4960, 19.5750, 14.1910 changes by changing the brightness by 10 percent. The first figure shows a shift by +10% for each color and the second figure -10%.

Similar to the brightness gradients but the following saturation gradients show a change of the YIQ color 145.4960, 19.5750, 14.1910 by changing the saturation by 10% instead.

■ 145.4960, 19.5750,
14.1910

■ 145.4960, 19.5750,
14.1910

■ 255.0000, -0.0000,
-0.0000

■ 119.7840, 18.7040,
13.4560

■ 199.5070, 21.0420,
15.1380

■ 94.4850, 18.1080,
13.2440

■ 226.9090, 19.8500,
14.7140

■ 70.8870, 16.9160,
12.8200

■ 246.1950, 4.1250,
7.8450

■ 47.8760, 15.4490,
11.8730

■ 25.6910, 14.5320,
11.9720

■ 8.8280, 15.4040,
7.1800

■ 0.0000, 0.0000,

0.0000

■ 145.4960, 19.5750,
14.1910

■ 145.4960, 19.5750,
14.1910

■ 134.3770, 27.4600,
19.9720

■ 156.6150, 11.6900,
8.4100

■ 122.5570, 35.9410,
25.9650

■ 168.4350, 3.2090,
2.4170

■ 111.4380, 43.8260,
31.7460

■ 179.5540, -4.6760,
-3.3640

■ 100.3190, 51.7110,
37.5270

■ 190.6730,
-12.5610, -9.1450

■ 88.6130, 59.8710,
43.8310

■ 202.3790,
-20.7210, -15.4490

■ 77.3800, 68.0770,
49.3010

■ 213.6120,
-28.9270, -20.9190

■ 66.2610, 75.9620,
55.0820

■ 224.7310,
-36.8120, -26.7000

■ 59.7070, 80.6380,
58.4460

■ 227.6320,
-40.8470, -25.1590

■ 228.8860,
-44.3780, -21.7380

Harmonies

Analogous

The Analogous color harmony consists of three colors that are next to each other on the color wheel.



145.1940, 5.8660, 14.8420



145.4960, 19.5750, 14.1910



144.7540, 27.4160, 9.7520

Triad

The Triadic color harmony groups three colors that are evenly spaced from another and form a triangle on the color wheel.



145.4960, 19.5750, 14.1910



140.2270, 9.1260, -11.2100



137.1020, -35.5780, -5.0020

Complementary

The Complementary color scheme is a pair of colors which are on the opposite of each other on the color wheel.



145.4960, 19.5750, 14.1910



158.5040, -19.5750, -14.1910

Split Complementary

Split-complementary colors differ from the complementary color scheme. The scheme consists of three colors, the original color and two neighbors of the complement color.



135.4840, -34.0180, -11.2500



145.4960, 19.5750, 14.1910



138.0340, -6.5080, -14.2200

Square

The Square scheme is like the rectangle color scheme, but the four colors are evenly spaced on the color wheel.



145.4960, 19.5750, 14.1910



142.5600, 21.5500, -5.0900



136.5360, -22.6010, -14.4170



140.3360, -27.1890, 2.6590

Rectangle

The Rectangle color scheme consists of four colors that form a rectangle on the color wheel.



145.4960, 19.5750, 14.1910



144.1900, 28.8840, 5.1720



136.5360, -22.6010, -14.4170



136.3360, -36.3570, -7.4050

Sweetspot

The Sweet Spot groups the original color and five complimentary colors.



145.4960, 19.5750, 14.1910



214.1690, 7.0140, 5.0460



143.2630, 1.4180, 18.3620



106.1470, 4.0800, 3.1520



240.0000, -0.0000, -0.0000



112.0000, -0.0000, 0.0000

Same Dimension

The Same Dimension uses a secret algorithm to generate beautiful new colors.



145.4960, 19.5750, 14.1910



181.5130, 30.0730, 22.1770



145.3190, 24.2070, 7.3350



81.1470, 4.0800, 3.1520



51.8040, 69.8190, 50.7710



7.9030, 10.8190, 7.6750

Inverse Universe

The Inverse Universe completely reimagines the original color for something new.



145.4960, 19.5750, 14.1910



181.5130, 30.0730, 22.1770



158.6810, -24.2070, -7.3350



81.1470, 4.0800, 3.1520



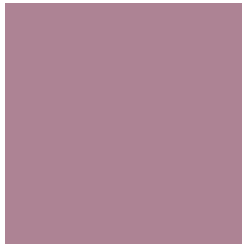
51.8040, 69.8190, 50.7710



7.9030, 10.8190, 7.6750

Previews

White Background



This preview shows how the YIQ color 145.4960, 19.5750, 14.1910 looks on a white background.

Color Contrast Check

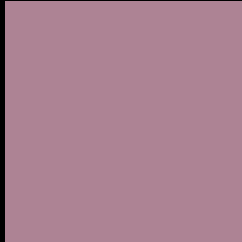
Large Text (above 18pt) WCAG AA ✓ Pass

Any Text WCAG AA ✗ Fail

Large Text (above 18pt) WCAG AAA ✗ Fail

Any Text WCAG AAA ✗ Fail

Black Background



This preview shows how the YIQ color 145.4960, 19.5750, 14.1910 looks on a black background.

Color Contrast Check

Large Text (above 18pt) WCAG AA ✓ Pass

Any Text WCAG AA ✓ Pass

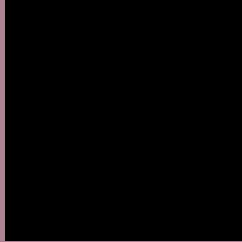
Large Text (above 18pt) WCAG AAA ✓ Pass

Any Text WCAG AAA × Fail

If you want to check with other color combinations, try the [Color Contrast Checker](#).

YIQ 145.4960, 19.5750, 14.1910

Background



This preview shows how black text looks on a background with the YIQ color 145.4960, 19.5750, 14.1910.



This preview shows how white text looks on a background with the YIQ color 145.4960, 19.5750,

Color Blindness Simulation

Color vision deficiency is a very complex topic, and I could not describe the different causes any better than Wikipedia does, so if you want to learn more, you should check out their [article about color blindness](#).

Dichromacy



Original Color

145.4960, 19.5750, 14.1910

Protanopia

143.4820, -4.1730, 4.0430

Deuteranopia

144.1090, 7.2430, 6.4030



Tritanopia

145.1000, 20.6300, 11.5900

Trichromacy



Original Color

145.4960, 19.5750, 14.1910

Protanomaly

144.0810, 4.4460, 7.5340

Deuteranomaly

144.4410, 12.2400, 9.4560

Tritanomaly

145.3280, 19.9880, 12.2120

Monochromacy



Original Color

145.4960, 19.5750, 14.1910

Achromatopsia

145.0000, 0.0000, -0.0000

Achromatomaly

145.1690, 7.0140, 5.0460

CSS Examples

Text

The CSS property to change the color of the text to YIQ 145.4960, 19.5750, 14.1910 is called "color". The color property can be set on classes, ids or directly on the HTML element.

This example shows how text in the color `rgb(173, 131, 148)` looks like.

```
.text, #text, p{  
    color:rgb(173, 131, 148)  
}
```

If you want to add a text shadow in that color use the text-shadow property, you can generate a text shadow directly with our [CSS Text Shadow Generator](#).

Here you see how black text with a 4 pixel rgb(173, 131, 148) colored shadow looks like.

```
.shadow{ text-shadow: 4px 4px 2px rgb(173, 131, 148) }
```

Border

The CSS property to change the border of an element to YIQ 145.4960, 19.5750, 14.1910 is called "border". The border property can be set on classes, ids or directly on the HTML element.

This example shows the color as border, it can be applied via the CSS property "border" or "border-color".

```
.border, #border, table{ border:4px solid rgb(173, 131, 148) }
```


If only the border color should be changed use the property `border-color`.

```
.border{ border-color:rgb(173, 131, 148) }
```

If you want to add a box shadow in that color use:

Here you see how a box with a 4 pixel `rgb(173, 131, 148)` colored shadow looks like.

```
.boxshadow{ -moz-box-shadow:4px 4px 4px  
4px rgb(173, 131, 148); -webkit-box-  
shadow:4px 4px 4px 4px rgb(173, 131, 148);  
box-shadow:4px 4px 4px 4px rgb(173, 131,  
148) }
```

Background

The CSS property to change the background color of an element to YIQ 145.4960, 19.5750, 14.1910 is called "background". The background property can be set on classes, ids or directly on the HTML element.

```
.background, #background, body{  
background: rgb(173, 131, 148) }
```

If only the background color should be changed can be used:

```
.background{ background-color: rgb(173,  
131, 148) }
```

This example shows the color as background, it is applied via the CSS property "background".

To optimize and compress your CSS code, you can use our [online CSS compressor and optimizer](#) based on csstidy. If you want to create a linear or radial gradient as background or border, check our [CSS Gradient Generator](#).

Hey! You found this booklet interesting? Support Converting Colors with the new Membership Option!

The pro membership hides all ads, plus gives you double the colors in the color bucket, and more awesome pro features!

[Learn more, Memberships starting at \\$2.50/m!](#)

**Follow me
on Twitter!**

@ConvertingColor