

Converting Colors

YIQ(145.7570, 40.5290, 8.8890)

Have a look what the booklet for
YIQ(145.7570, 40.5290, 8.8890)
contains.

YIQ(145.7570, 40.5290, 8.8890)	3
<i>Conversions</i>	4
<i>Details</i>	6
<i>Harmonies</i>	12
<i>Previews</i>	24
<i>Color Blindness Simulation</i>	28
<i>CSS Examples</i>	31

Color

**YIQ(145.7570, 40.5290,
8.8890)**

Conversions

Conversions Part 1

Format	Color
Hex	BE8174
RGB	190, 129, 116
RGB Percent	75%, 51%, 45%
CMY	0.2548, 0.4942, 0.5449
CMYK	0.00, 0.32, 0.39, 0.25
HSL	10°, 36%, 60%
HSV	10°, 39%, 75%
XYZ	32.2457, 27.9074, 20.2234
YIQ	145.7570, 40.5290, 8.8890

Conversions

Conversions Part 2

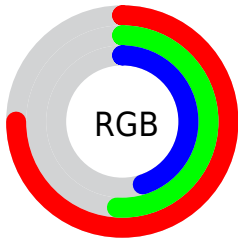
Format	Color
R_{YB}	190, 132, 116
Decimal	12484980
CIE _{Lab}	59.80, 21.98, 16.59
CIE _{LCh}	60, 27.535, 37.042
Yxy	27.9074, 0.4012, 0.3472
Android (android.graphics.Color)	4290675060 (0xFFBE8174)
YUV	145.7570, -14.6702, 38.8011
Hunter-Lab	52.8274, 16.5080, 14.2818

Details

The YIQ color **145.7570, 40.5290, 8.8890** is a dark color, and the websafe version is hex **CC9999**. A complement of this color would be **160.2430, -40.5290, -8.8890**, and the grayscale version is **146.0000, -0.0000, -0.0000**.

A 20% lighter version of the original color is **200.1380, 43.8300, 9.6380**, and **94.1910, 36.3110, 8.2390** is the 20% darker color. If you saturate the color by 10%, you get **134.1990, 51.0280, 11.3480**, and if you desaturate by 10%, it is **157.3150, 30.0300, 6.4300**.

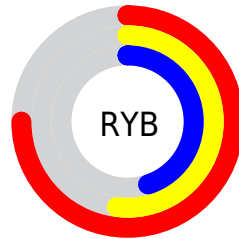
Distribution



Red (75%)

Green (51%)

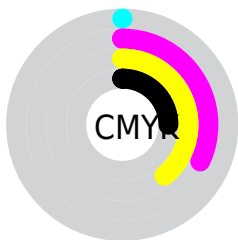
Blue (45%)



Red (75%)

Yellow (52%)

Blue (45%)

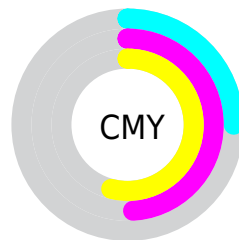


Cyan (0%)

Magenta (32%)

Yellow (39%)

Black (25%)



Cyan (25%)

Magenta (49%)

Yellow (54%)

Brightness & Saturation Gradients

These gradients show how the YIQ color 145.7570, 40.5290, 8.8890 changes by changing the brightness by 10 percent. The first figure shows a shift by +10% for each color and the second figure -10%.

Similar to the brightness gradients but the following saturation gradients show a change of the YIQ color 145.7570, 40.5290, 8.8890 by changing the saturation by 10% instead.

■ 145.7570, 40.5290,
8.8890

■ 145.7570, 40.5290,
8.8890

255.0000, -0.0000,
-0.0000

■ 119.8600, 38.7410,
8.2530

■ 200.1380, 43.8300,
9.6380

■ 94.4900, 36.9070,
8.4510

■ 221.7450, 31.6350,
4.8750

■ 70.4080, 34.2020,
7.9140

■ 241.3730, 14.9470,
-1.0610

■ 46.7390, 31.7720,
7.9000

254.6580, 0.9630,
-0.9330

■ 23.5000, 30.9470,
6.3310

■ 10.5790, 20.5390,
7.7310

■ 0.0000, 0.0000,

0.0000

■ 145.7570, 40.5290,
8.8890

■ 145.7570, 40.5290,
8.8890

■ 134.1990, 51.0280,
11.3480

■ 157.3150, 30.0300,
6.4300

■ 123.2280, 61.2520,
13.2840

■ 168.2860, 19.8060,
4.4940

■ 111.6700, 71.7510,
15.7430

■ 179.8440, 9.3070,
2.0350

■ 100.1120, 82.2500,
18.2020

■ 191.4020, -1.1920,
-0.4240

■ 89.1410, 92.4740,
20.1380

■ 202.3730,
-11.4160, -2.3600

■ 77.5830, 102.9730,
22.5970

■ 213.9310,
-21.9150, -4.8190

■ 76.1810, 104.1650,
23.0210

■ 225.4890,
-32.4140, -7.2780

■ 234.9780,
-38.4650, -13.2570

■ 235.5650,
-38.7400, -13.7800

Harmonies

Analogous

The Analogous color harmony consists of three colors that are next to each other on the color wheel.



147.2160, 35.1630, 18.0350



145.7570, 40.5290, 8.8890



144.1550, 35.9920, -2.5040

Triad

The Triadic color harmony groups three colors that are evenly spaced from another and form a triangle on the color wheel.



145.7570, 40.5290, 8.8890



135.6080, -23.1040, -21.8240



142.5950, -29.1160, 10.0520

Complementary

The Complementary color scheme is a pair of colors which are on the opposite of each other on the color wheel.



145.7570, 40.5290, 8.8890



160.2430, -40.5290, -8.8890

Split Complementary

Split-complementary colors differ from the complementary color scheme. The scheme consists of three colors, the original color and two neighbors of the complement color.



136.0710, -51.4880, -3.0080



145.7570, 40.5290, 8.8890



131.2710, -46.9000, -20.0840

Square

The Square scheme is like the rectangle color scheme, but the four colors are evenly spaced on the color wheel.



145.7570, 40.5290, 8.8890



139.1780, 1.6540, -18.9700



130.3160, -59.9680, -14.5280



147.0390, -3.7630, 18.6450

Rectangle

The Rectangle color scheme consists of four colors that form a rectangle on the color wheel.



145.7570, 40.5290, 8.8890



143.0350, 27.2820, -9.8540



130.3160, -59.9680, -14.5280



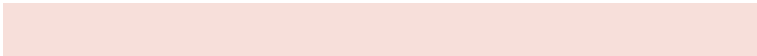
140.4690, -37.6890, 5.7270

Sweetspot

The Sweet Spot groups the original color and five complimentary colors.



145.7570, 40.5290, 8.8890



229.6060, 15.9090, 3.5330



145.1940, 24.2020, 34.9700



114.7300, 9.6280, 1.7240



252.0000, 0.0000, 0.0000



125.0000, 0.0000, 0.0000

Same Dimension

The Same Dimension uses a secret algorithm to generate beautiful new colors.



145.7570, 40.5290, 8.8890



177.4240, 63.6360, 14.1320



166.8890, 30.6290, -9.9390



88.8650, 4.8140, 0.8620



63.6780, 86.4680, 18.8520



12.2040, 17.1010, 3.9570

Inverse Universe

The Inverse Universe completely reimagines the original color for something new.



160.2430, -40.5290, -8.8890



200.5760, -63.6360, -14.1320



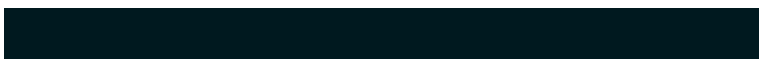
139.1110, -30.6290, 9.9390



90.7220, -5.0890, -1.3850



94.3220, -86.4680, -18.8520



18.2090, -16.8260, -3.4340

Previews

White Background



This preview shows how the YIQ color 145.7570, 40.5290, 8.8890 looks on a white background.

Color Contrast Check

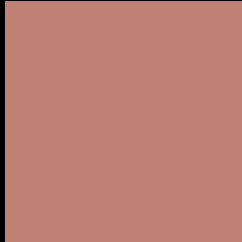
Large Text (above 18pt) WCAG AA ✓ Pass

Any Text WCAG AA × Fail

Large Text (above 18pt) WCAG AAA × Fail

Any Text WCAG AAA × Fail

Black Background



This preview shows how the YIQ color 145.7570, 40.5290, 8.8890 looks on a black background.

Color Contrast Check

Large Text (above 18pt) WCAG AA ✓ Pass

Any Text WCAG AA ✓ Pass

Large Text (above 18pt) WCAG AAA ✓ Pass

Any Text WCAG AAA × Fail

If you want to check with other color combinations, try the [Color Contrast Checker](#).

YIQ 145.7570, 40.5290, 8.8890

Background



This preview shows how black text looks on a background with the YIQ color 145.7570, 40.5290, 8.8890.



This preview shows how white text looks on a background with the YIQ color 145.7570, 40.5290,

8.8890.

Color Blindness Simulation

Color vision deficiency is a very complex topic, and I could not describe the different causes any better than Wikipedia does, so if you want to learn more, you should check out their [article about color blindness](#).

Dichromacy



Original Color

145.7570, 40.5290, 8.8890

Protanopia

143.9980, 11.5090, -4.8350

Deuteranopia

145.1200, 25.9050, -1.4150



Tritanopia

146.8740, 36.1260, 17.1020

Trichromacy



Original Color

145.7570, 40.5290, 8.8890

Protanomaly

144.9070, 22.1910, -0.1850

Deuteranomaly

145.2780, 31.4520, 2.6840

Tritanomaly

146.3640, 37.5020, 14.1900

Monochromacy



Original Color

145.7570, 40.5290, 8.8890

Achromatopsia

146.0000, -0.0000, -0.0000

Achromatomaly

146.0080, 14.7170, 3.1090

CSS Examples

Text

The CSS property to change the color of the text to YIQ 145.7570, 40.5290, 8.8890 is called "color". The color property can be set on classes, ids or directly on the HTML element.

This example shows how text in the color `rgb(190, 129, 116)` looks like.

```
.text, #text, p{  
    color:rgb(190, 129, 116)  
}
```

If you want to add a text shadow in that color use the text-shadow property, you can generate a text shadow directly with our [CSS Text Shadow Generator](#).

Here you see how black text with a 4 pixel rgb(190, 129, 116) colored shadow looks like.

```
.shadow{ text-shadow: 4px 4px 2px rgb(190, 129, 116) }
```

Border

The CSS property to change the border of an element to YIQ 145.7570, 40.5290, 8.8890 is called "border". The border property can be set on classes, ids or directly on the HTML element.

This example shows the color as border, it can be applied via the CSS property "border" or "border-color".

```
.border, #border, table{ border:4px solid rgb(190, 129, 116) }
```


If only the border color should be changed use the property `border-color`.

```
.border{ border-color:rgb(190, 129, 116) }
```

If you want to add a box shadow in that color use:

Here you see how a box with a 4 pixel `rgb(190, 129, 116)` colored shadow looks like.

```
.boxshadow{ -moz-box-shadow:4px 4px 4px  
4px rgb(190, 129, 116); -webkit-box-  
shadow:4px 4px 4px 4px rgb(190, 129, 116);  
box-shadow:4px 4px 4px 4px rgb(190, 129,  
116) }
```

Background

The CSS property to change the background color of an element to YIQ 145.7570, 40.5290, 8.8890 is called "background". The background property can be set on classes, ids or directly on the HTML element.

```
.background, #background, body{  
background: rgb(190, 129, 116) }
```

If only the background color should be changed can be used:

```
.background{ background-color: rgb(190,  
129, 116) }
```

This example shows the color as background, it is applied via the CSS property "background".

To optimize and compress your CSS code, you can use our [online CSS compressor and optimizer](#) based on csstidy. If you want to create a linear or radial gradient as background or border, check our [CSS Gradient Generator](#).

Hey! You found this booklet interesting? Support Converting Colors with the new Membership Option!

The pro membership hides all ads, plus gives you double the colors in the color bucket, and more awesome pro features!

[Learn more, Memberships starting at \\$2.50/m!](#)

**Follow me
on Twitter!**

@ConvertingColor