

Converting Colors

YIQ(145.8480, 47.0420, -4.5260)

Have a look what the booklet for
YIQ(145.8480, 47.0420, -4.5260)
contains.

YIQ(145.8480, 47.0420, -4.5260)	3
<i>Conversions</i>	4
<i>Details</i>	6
<i>Harmonies</i>	12
<i>Previews</i>	24
<i>Color Blindness Simulation</i>	28
<i>CSS Examples</i>	31

Color

**YIQ(145.8480, 47.0420,
-4.5260)**

Conversions

Conversions Part 1

Format	Color
Hex	BC8856
RGB	188, 136, 86
RGB Percent	74%, 53%, 34%
CMY	0.2627, 0.4667, 0.6625
CMYK	0.00, 0.28, 0.54, 0.26
HSL	29°, 43%, 54%
HSV	29°, 54%, 74%
XYZ	31.2280, 28.9693, 12.7620
YIQ	145.8480, 47.0420, -4.5260

Conversions

Conversions Part 2

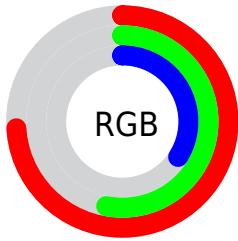
Format	Color
RYB	188, 184, 86
Decimal	12355670
CIELab	60.75, 14.18, 34.46
CIELCh	61, 37.260, 67.637
Yxy	28.9693, 0.4280, 0.3971
Android (android.graphics.Color)	4290545750 (0xFFBC8856)
YUV	145.8480, -29.5051, 36.9673
Hunter-Lab	53.8231, 9.3744, 23.6180

Details

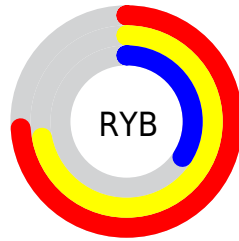
The YIQ color **145.8480, 47.0420, -4.5260** is a dark color, and the websafe version is hex **CC9966**. A complement of this color would be **128.1520, -47.0420, 4.5260**, and the grayscale version is **146.0000, -0.0000, -0.0000**.

A 20% lighter version of the original color is **200.4140, 51.2600, -3.8760**, and **94.3960, 42.5030, -4.8650** is the 20% darker color. If you saturate the color by 10%, you get **137.8120, 55.8910, -5.2050**, and if you desaturate by 10%, it is **153.8840, 38.1930, -3.8470**.

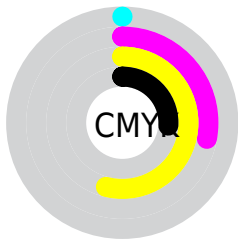
Distribution



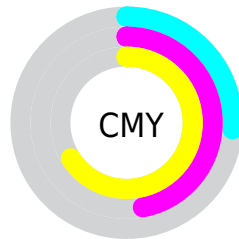
- Red (74%)
- Green (53%)
- Blue (34%)



- Red (74%)
- Yellow (72%)
- Blue (34%)



- Cyan (0%)
- Magenta (28%)
- Yellow (54%)
- Black (26%)



- Cyan (26%)
- Magenta (47%)
- Yellow (66%)

Brightness & Saturation Gradients

These gradients show how the YIQ color 145.8480, 47.0420, -4.5260 changes by changing the brightness by 10 percent. The first figure shows a shift by +10% for each color and the second figure -10%.

Similar to the brightness gradients but the following saturation gradients show a change of the YIQ color 145.8480, 47.0420, -4.5260 by changing the saturation by 10% instead.

■ 145.8480, 47.0420,
-4.5260

■ 145.8480, 47.0420,
-4.5260

■ 255.0000, -0.0000,
-0.0000

■ 120.0650, 44.9330,
-4.8510

■ 200.4140, 51.2600,
-3.8760

■ 94.3960, 42.5030,
-4.8650

■ 222.2060, 39.9820,
-8.7380

■ 70.2000, 40.1190,
-5.7130

■ 242.4210, 23.0190,
-15.1970

■ 47.6880, 35.8090,
-4.6950

■ 250.8960, 11.5560,
-11.1960

■ 27.2880, 25.4920,
0.5640

■ 254.0880, 2.5680,
-2.4880

■ 8.6710, 17.2840,
6.1480

■ 0.0000, 0.0000,

0.0000

■ 145.8480, 47.0420,
-4.5260

■ 145.8480, 47.0420,
-4.5260

■ 137.8120, 55.8910,
-5.2050

■ 153.8840, 38.1930,
-3.8470

■ 130.3630, 64.4650,
-6.4070

■ 161.3330, 29.6190,
-2.6450

■ 122.4410, 72.9930,
-6.7750

■ 169.2550, 21.0910,
-2.2770

■ 114.9920, 81.5670,
-7.9770

■ 176.7040, 12.5170,
-1.0750

■ 110.2160, 86.7480,
-8.2600

■ 184.7400, 3.6680,
-0.3960

■ 192.7760, -5.1810,
0.2830

■ 200.2250,
-13.7550, 1.4850

■ 208.1470,
-22.2830, 1.8530

■ 215.5960,
-30.8570, 3.0550

Harmonies

Analogous

The Analogous color harmony consists of three colors that are next to each other on the color wheel.



147.2810, 53.7330, 11.8850



145.8480, 47.0420, -4.5260



142.9500, 28.6590, -18.2930

Triad

The Triadic color harmony groups three colors that are evenly spaced from another and form a triangle on the color wheel.



145.8480, 47.0420, -4.5260



118.3090, -85.5940, -34.6980



150.0700, -5.0480, 25.4160

Complementary

The Complementary color scheme is a pair of colors which are on the opposite of each other on the color wheel.



145.8480, 47.0420, -4.5260



128.1520, -47.0420, 4.5260

Split Complementary

Split-complementary colors differ from the complementary color scheme. The scheme consists of three colors, the original color and two neighbors of the complement color.



143.5320, -42.0000, 12.2720



145.8480, 47.0420, -4.5260



116.2980, -104.2560, -26.8800

Square

The Square scheme is like the rectangle color scheme, but the four colors are evenly spaced on the color wheel.



145.8480, 47.0420, -4.5260



133.2920, -34.1980, -30.0220



128.0160, -85.1860, -9.0420



150.4020, 26.3120, 29.7680

Rectangle

The Rectangle color scheme consists of four colors that form a rectangle on the color wheel.



145.8480, 47.0420, -4.5260



140.9800, 10.7790, -24.6530



128.0160, -85.1860, -9.0420



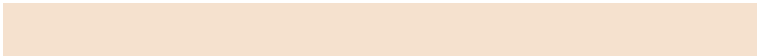
148.6170, -17.0140, 22.0100

Sweetspot

The Sweet Spot groups the original color and five complimentary colors.



145.8480, 47.0420, -4.5260



228.8140, 18.0190, -1.6690



122.5400, 43.7790, 38.1070



112.9210, 10.4080, -1.4000



250.0000, 0.0000, 0.0000



122.0000, 0.0000, -0.0000

Same Dimension

The Same Dimension uses a secret algorithm to generate beautiful new colors.



145.8480, 47.0420, -4.5260



179.3270, 73.3140, -7.0860



175.1980, 33.2920, -30.6760



90.6260, 3.9890, -0.7070



92.4410, 72.9930, -6.7750



18.0740, 14.3510, -1.2730

Inverse Universe

The Inverse Universe completely reimagines the original color for something new.



128.1520, -47.0420, 4.5260



151.6730, -73.3140, 7.0860



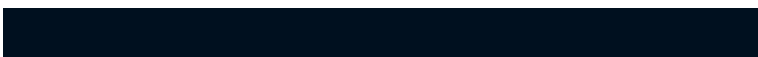
98.8020, -33.2920, 30.6760



88.9610, -4.2640, 0.1840



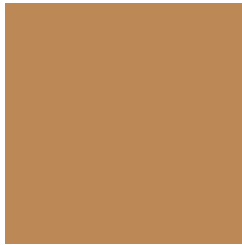
65.5590, -72.9930, 6.7750



12.9260, -14.3510, 1.2730

Previews

White Background



This preview shows how the YIQ color 145.8480, 47.0420, -4.5260 looks on a white background.

Color Contrast Check

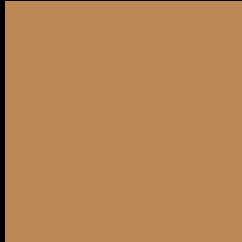
Large Text (above 18pt) WCAG AA ✓ Pass

Any Text WCAG AA × Fail

Large Text (above 18pt) WCAG AAA × Fail

Any Text WCAG AAA × Fail

Black Background



This preview shows how the YIQ color 145.8480, 47.0420, -4.5260 looks on a black background.

Color Contrast Check

Large Text (above 18pt) WCAG AA ✓ Pass

Any Text WCAG AA ✓ Pass

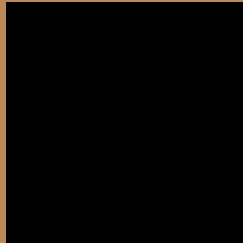
Large Text (above 18pt) WCAG AAA ✓ Pass

Any Text WCAG AAA × Fail

If you want to check with other color combinations, try the [Color Contrast Checker](#).

YIQ 145.8480, 47.0420, -4.5260

Background



This preview shows how black text looks on a background with the YIQ color 145.8480, 47.0420, -4.5260.



This preview shows how white text looks on a background with the YIQ color 145.8480, 47.0420, -4.5260.

-4.5260.

Color Blindness Simulation

Color vision deficiency is a very complex topic, and I could not describe the different causes any better than Wikipedia does, so if you want to learn more, you should check out their [article about color blindness](#).

Dichromacy



Original Color

145.8480, 47.0420, -4.5260

Protanopia

144.3890, 26.0450, -14.9710

Deuteranopia

145.3910, 40.8990, -8.8370



Tritanopia

148.9770, 34.3380, 16.4660

Trichromacy



Original Color

145.8480, 47.0420, -4.5260

Protanomaly

144.9170, 33.4260, -11.0700

Deuteranomaly

145.7010, 42.9620, -7.6780

Tritanomaly

148.2730, 39.0160, 8.7760

Monochromacy



Original Color

145.8480, 47.0420, -4.5260

Achromatopsia

146.0000, -0.0000, -0.0000

Achromatomaly

145.6290, 17.1020, -1.5700

CSS Examples

Text

The CSS property to change the color of the text to YIQ 145.8480, 47.0420, -4.5260 is called "color". The color property can be set on classes, ids or directly on the HTML element.

This example shows how text in the color `rgb(188, 136, 86)` looks like.

```
.text, #text, p{  
    color:rgb(188, 136, 86)  
}
```

If you want to add a text shadow in that color use the text-shadow property, you can generate a text shadow directly with our [CSS Text Shadow Generator](#).

Here you see how black text with a 4 pixel rgb(188, 136, 86) colored shadow looks like.

```
.shadow{ text-shadow: 4px 4px 2px rgb(188, 136, 86) }
```

Border

The CSS property to change the border of an element to YIQ 145.8480, 47.0420, -4.5260 is called "border". The border property can be set on classes, ids or directly on the HTML element.

This example shows the color as border, it can be applied via the CSS property "border" or "border-color".

```
.border, #border, table{ border:4px solid rgb(188, 136, 86) }
```


If only the border color should be changed use the property border-color.

```
.border{ border-color:rgb(188, 136, 86) }
```

If you want to add a box shadow in that color use:

Here you see how a box with a 4 pixel rgb(188, 136, 86) colored shadow looks like.

```
.boxshadow{ -moz-box-shadow:4px 4px 4px  
4px rgb(188, 136, 86); -webkit-box-  
shadow:4px 4px 4px 4px rgb(188, 136, 86);  
box-shadow:4px 4px 4px 4px rgb(188, 136,  
86) }
```

Background

The CSS property to change the background color of an element to YIQ 145.8480, 47.0420, -4.5260 is called "background". The background property can be set on classes, ids or directly on the HTML element.

```
.background, #background, body{  
background: rgb(188, 136, 86) }
```

If only the background color should be changed can be used:

```
.background{ background-color: rgb(188,  
136, 86) }
```

This example shows the color as background, it is applied via the CSS property "background".

To optimize and compress your CSS code, you can use our [online CSS compressor and optimizer](#) based on csstidy. If you want to create a linear or radial gradient as background or border, check our [CSS Gradient Generator](#).

Hey! You found this booklet interesting? Support Converting Colors with the new Membership Option!

The pro membership hides all ads, plus gives you double the colors in the color bucket, and more awesome pro features!

[Learn more, Memberships starting at \\$2.50/m!](#)

**Follow me
on Twitter!**

@ConvertingColor