

Converting Colors

YIQ(146.2910, 21.4100, 8.4660)

Have a look what the booklet for
YIQ(146.2910, 21.4100, 8.4660)
contains.

YIQ(146.2910, 21.4100, 8.4660)	3
<i>Conversions</i>	4
<i>Details</i>	6
<i>Harmonies</i>	12
<i>Previews</i>	24
<i>Color Blindness Simulation</i>	28
<i>CSS Examples</i>	31

Color

**YIQ(146.2910, 21.4100,
8.4660)**

Conversions

Conversions Part 1

Format	Color
Hex	AC8789
RGB	172, 135, 137
RGB Percent	67%, 53%, 54%
CMY	0.3254, 0.4706, 0.4627
CMYK	0.00, 0.22, 0.20, 0.33
HSL	357°, 18%, 60%
HSV	357°, 22%, 67%
XYZ	30.1969, 27.9036, 27.4693
YIQ	146.2910, 21.4100, 8.4660

Conversions

Conversions Part 2

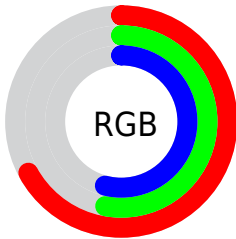
Format	Color
R_{YB}	172, 135, 137
Decimal	11306889
CIE _{Lab}	59.80, 14.45, 4.32
CIE _{LCh}	60, 15.077, 16.642
Yxy	27.9036, 0.3529, 0.3261
Android (android.graphics.Color)	4289496969 (0xFFAC8789)
YUV	146.2910, -4.5805, 22.5468
Hunter-Lab	52.8239, 9.5984, 6.1449

Details

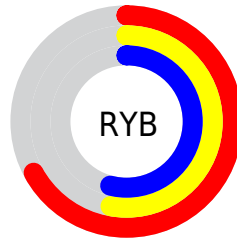
The YIQ color $146.2910, 21.4100, 8.4660$ is a dark color, and the websafe version is hex $CC9999$. A complement of this color would be $160.7090, -21.4100, -8.4660$, and the grayscale version is $146.0000, -0.0000, -0.0000$.

A 20% lighter version of the original color is $200.1880, 23.1980, 9.1020$, and $95.3940, 19.6220, 7.8300$ is the 20% darker color. If you saturate the color by 10%, you get $134.4880, 31.2210, 12.3810$, and if you desaturate by 10%, it is $158.0940, 11.5990, 4.5510$.

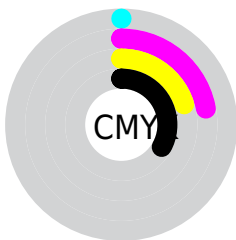
Distribution



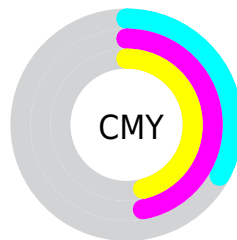
- Red (67%)
- Green (53%)
- Blue (54%)



- Red (67%)
- Yellow (53%)
- Blue (54%)



- Cyan (0%)
- Magenta (22%)
- Yellow (20%)
- Black (33%)



- Cyan (33%)
- Magenta (47%)
- Yellow (46%)

Brightness & Saturation Gradients

These gradients show how the YIQ color 146.2910, 21.4100, 8.4660 changes by changing the brightness by 10 percent. The first figure shows a shift by +10% for each color and the second figure -10%.

Similar to the brightness gradients but the following saturation gradients show a change of the YIQ color 146.2910, 21.4100, 8.4660 by changing the saturation by 10% instead.

■ 146.2910, 21.4100,
8.4660

■ 146.2910, 21.4100,
8.4660

■ 255.0000, -0.0000,
-0.0000

■ 120.6930, 20.2180,
8.0420

■ 200.1880, 23.1980,
9.1020

■ 95.3940, 19.6220,
7.8300

■ 227.8890, 22.6020,
8.8900

■ 71.7960, 18.4300,
7.4060

■ 248.2180, 5.3180,
2.7420

■ 49.1980, 17.2380,
6.9820

■ 27.4150, 15.1290,
6.6570

■ 8.1870, 15.7710,
6.0350

■ 0.0000, 0.0000,

0.0000

■ 146.2910, 21.4100,
8.4660

■ 146.2910, 21.4100,
8.4660

■ 134.4880, 31.2210,
12.3810

■ 158.0940, 11.5990,
4.5510

■ 122.6850, 41.0320,
16.2960

■ 170.0110, 1.4670,
0.9470

■ 110.1810, 51.4390,
20.4230

■ 182.4010, -8.6190,
-3.4910

■ 98.3780, 61.2500,
24.3380

■ 194.2040,
-18.4300, -7.4060

■ 86.5750, 71.0610,
28.2530

■ 206.0070,
-28.2410, -11.3210

■ 74.6580, 81.1930,
31.8570

■ 217.9240,
-38.3730, -14.9250

■ 62.8550, 91.0040,
35.7720

■ 229.7270,
-48.1840, -18.8400

■ 52.4540, 99.6230,
39.2630

■ 230.1830,
-49.4680, -17.5960

Harmonies

Analogous

The Analogous color harmony consists of three colors that are next to each other on the color wheel.



146.3920, 13.9360, 11.7600



146.2910, 21.4100, 8.4660



145.2000, 22.9240, 3.0520

Triad

The Triadic color harmony groups three colors that are evenly spaced from another and form a triangle on the color wheel.



146.2910, 21.4100, 8.4660



140.9960, -3.3450, -10.9690



142.0330, -21.9620, 1.5420

Complementary

The Complementary color scheme is a pair of colors which are on the opposite of each other on the color wheel.



146.2910, 21.4100, 8.4660



160.7090, -21.4100, -8.4660

Split Complementary

Split-complementary colors differ from the complementary color scheme. The scheme consists of three colors, the original color and two neighbors of the complement color.



139.8210, -27.4170, -4.2250



146.2910, 21.4100, 8.4660



139.5370, -15.1740, -11.3500

Square

The Square scheme is like the rectangle color scheme, but the four colors are evenly spaced on the color wheel.



146.2910, 21.4100, 8.4660



143.2210, 9.2630, -8.1850



139.3280, -24.7110, -9.2150



144.7680, -10.7300, 7.2380

Rectangle

The Rectangle color scheme consists of four colors that form a rectangle on the color wheel.



146.2910, 21.4100, 8.4660



144.8960, 20.7240, -1.1320



139.3280, -24.7110, -9.2150



141.0110, -24.8960, -0.3520

Sweetspot

The Sweet Spot groups the original color and five complimentary colors.



146.2910, 21.4100, 8.4660



215.0010, 7.4270, 3.0670



149.6830, 8.9830, 18.9270



106.5060, 4.4470, 2.0070



240.0000, -0.0000, -0.0000



112.0000, -0.0000, 0.0000

Same Dimension

The Same Dimension uses a secret algorithm to generate beautiful new colors.



146.2910, 21.4100, 8.4660



183.6840, 33.6050, 13.2290



155.4550, 17.6520, -0.5240



80.8050, 5.0430, 2.2190



45.7620, 86.8320, 34.2880



6.9910, 13.3870, 5.1870

Inverse Universe

The Inverse Universe completely reimagines the original color for something new.



146.2910, 21.4100, 8.4660



183.6840, 33.6050, 13.2290



151.5450, -17.6520, 0.5240



80.8050, 5.0430, 2.2190



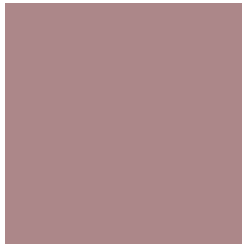
45.7620, 86.8320, 34.2880



6.9910, 13.3870, 5.1870

Previews

White Background



This preview shows how the YIQ color 146.2910, 21.4100, 8.4660 looks on a white background.

Color Contrast Check

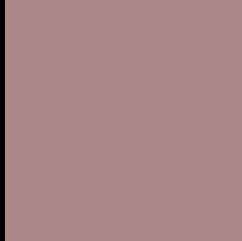
Large Text (above 18pt) WCAG AA ✓ Pass

Any Text WCAG AA ✗ Fail

Large Text (above 18pt) WCAG AAA ✗ Fail

Any Text WCAG AAA ✗ Fail

Black Background



This preview shows how the YIQ color 146.2910, 21.4100, 8.4660 looks on a black background.

Color Contrast Check

Large Text (above 18pt) WCAG AA ✓ Pass

Any Text WCAG AA ✓ Pass

Large Text (above 18pt) WCAG AAA ✓ Pass

Any Text WCAG AAA × Fail

If you want to check with other color combinations, try the [Color Contrast Checker](#).

YIQ 146.2910, 21.4100, 8.4660

Background



This preview shows how black text looks on a background with the YIQ color 146.2910, 21.4100, 8.4660.



This preview shows how white text looks on a background with the YIQ color 146.2910, 21.4100,

8.4660.

Color Blindness Simulation

Color vision deficiency is a very complex topic, and I could not describe the different causes any better than Wikipedia does, so if you want to learn more, you should check out their [article about color blindness](#).

Dichromacy



Original Color

146.2910, 21.4100, 8.4660

Protanopia

144.6690, 2.4300, 0.0140

Deuteranopia

145.2360, 14.0750, 3.7310



Tritanopia

146.8010, 20.0340, 11.3780

Trichromacy



Original Color

146.2910, 21.4100, 8.4660

Protanomaly

145.3710, 9.2610, 2.8690

Deuteranomaly

145.8450, 16.7340, 5.1020

Tritanomaly

146.4590, 20.9970, 10.4450

Monochromacy



Original Color

146.2910, 21.4100, 8.4660

Achromatopsia

146.0000, -0.0000, -0.0000

Achromatomaly

146.0010, 7.4270, 3.0670

CSS Examples

Text

The CSS property to change the color of the text to YIQ 146.2910, 21.4100, 8.4660 is called "color". The color property can be set on classes, ids or directly on the HTML element.

This example shows how text in the color `rgb(172, 135, 137)` looks like.

```
.text, #text, p{  
    color:rgb(172, 135, 137)  
}
```

If you want to add a text shadow in that color use the text-shadow property, you can generate a text shadow directly with our [CSS Text Shadow Generator](#).

Here you see how black text with a 4 pixel rgb(172, 135, 137) colored shadow looks like.

```
.shadow{ text-shadow: 4px 4px 2px rgb(172, 135, 137) }
```

Border

The CSS property to change the border of an element to YIQ 146.2910, 21.4100, 8.4660 is called "border". The border property can be set on classes, ids or directly on the HTML element.

This example shows the color as border, it can be applied via the CSS property "border" or "border-color".

```
.border, #border, table{ border:4px solid rgb(172, 135, 137) }
```


If only the border color should be changed use the property `border-color`.

```
.border{ border-color:rgb(172, 135, 137) }
```

If you want to add a box shadow in that color use:

Here you see how a box with a 4 pixel `rgb(172, 135, 137)` colored shadow looks like.

```
.boxshadow{ -moz-box-shadow:4px 4px 4px  
4px rgb(172, 135, 137); -webkit-box-  
shadow:4px 4px 4px 4px rgb(172, 135, 137);  
box-shadow:4px 4px 4px 4px rgb(172, 135,  
137) }
```

Background

The CSS property to change the background color of an element to YIQ 146.2910, 21.4100, 8.4660 is called "background". The background property can be set on classes, ids or directly on the HTML element.

```
.background, #background, body{  
background: rgb(172, 135, 137) }
```

If only the background color should be changed can be used:

```
.background{ background-color: rgb(172,  
135, 137) }
```

This example shows the color as background, it is applied via the CSS property "background".

To optimize and compress your CSS code, you can use our [online CSS compressor and optimizer](#) based on csstidy. If you want to create a linear or radial gradient as background or border, check our [CSS Gradient Generator](#).

Hey! You found this booklet interesting? Support Converting Colors with the new Membership Option!

The pro membership hides all ads, plus gives you double the colors in the color bucket, and more awesome pro features!

[Learn more, Memberships starting at \\$2.50/m!](#)

**Follow me
on Twitter!**

@ConvertingColor