

Converting Colors

YIQ(146.3740, 22.3740, 2.0060)

Have a look what the booklet for
YIQ(146.3740, 22.3740, 2.0060)
contains.

YIQ(146.3740, 22.3740, 2.0060)	3
<i>Conversions</i>	4
<i>Details</i>	6
<i>Harmonies</i>	12
<i>Previews</i>	24
<i>Color Blindness Simulation</i>	28
<i>CSS Examples</i>	31

Color

**YIQ(146.3740, 22.3740,
2.0060)**

Conversions

Conversions Part 1

Format	Color
Hex	A98B7D
RGB	169, 139, 125
RGB Percent	66%, 55%, 49%
CMY	0.3372, 0.4549, 0.5097
CMYK	0.00, 0.18, 0.26, 0.34
HSL	19°, 20%, 58%
HSV	19°, 26%, 66%
XYZ	29.2997, 28.3797, 23.3441
YIQ	146.3740, 22.3740, 2.0060

Conversions

Conversions Part 2

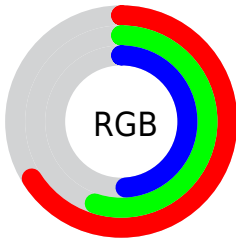
Format	Color
R_{YB}	169, 146, 125
Decimal	11111293
CIE _{Lab}	60.23, 9.18, 11.73
CIE _{LCh}	60, 14.897, 51.938
Yxy	28.3797, 0.3616, 0.3503
Android (android.graphics.Color)	4289301373 (0xFFA98B7D)
YUV	146.3740, -10.5374, 19.8430
Hunter-Lab	53.2726, 4.9472, 11.3099

Details

The YIQ color $146.3740, 22.3740, 2.0060$ is a dark color, and the websafe version is hex $CC9999$. A complement of this color would be $147.6260, -22.3740, -2.0060$, and the grayscale version is $146.0000, -0.0000, -0.0000$.

A 20% lighter version of the original color is $200.8580, 23.8870, 2.1190$, and $95.5910, 20.2650, 1.6810$ is the 20% darker color. If you saturate the color by 10%, you get $137.3920, 31.1310, 2.9950$, and if you desaturate by 10%, it is $155.3560, 13.6170, 1.0170$.

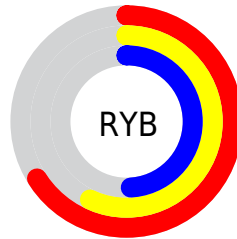
Distribution



Red (66%)

Green (55%)

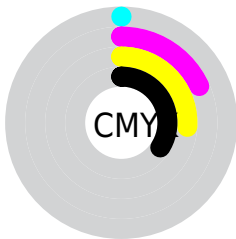
Blue (49%)



Red (66%)

Yellow (57%)

Blue (49%)

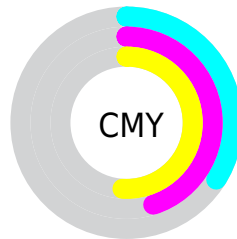


Cyan (0%)

Magenta (18%)

Yellow (26%)

Black (34%)



Cyan (34%)

Magenta (45%)

Yellow (51%)

Brightness & Saturation Gradients

These gradients show how the YIQ color 146.3740, 22.3740, 2.0060 changes by changing the brightness by 10 percent. The first figure shows a shift by +10% for each color and the second figure -10%.

Similar to the brightness gradients but the following saturation gradients show a change of the YIQ color 146.3740, 22.3740, 2.0060 by changing the saturation by 10% instead.

■ 146.3740, 22.3740,
2.0060

■ 146.3740, 22.3740,
2.0060

255.0000, -0.0000,
-0.0000

■ 120.7760, 21.1820,
1.5820

■ 200.2710, 24.1620,
2.6420

■ 95.5910, 20.2650,
1.6810

■ 228.4560, 25.0790,
2.5430

■ 71.9930, 19.0730,
1.2570

■ 248.9700, 8.7120,
-3.7040

■ 48.9220, 17.8350,
1.6670

■ 27.6830, 17.0100,
0.0980

■ 6.2790, 12.5160,
4.4520

■ 0.0000, 0.0000,

0.0000

■ 146.3740, 22.3740,
2.0060

■ 146.3740, 22.3740,
2.0060

■ 137.3920, 31.1310,
2.9950

■ 155.3560, 13.6170,
1.0170

■ 128.9970, 39.6130,
3.4610

■ 163.7510, 5.1350,
0.5510

■ 120.0150, 48.3700,
4.4500

■ 172.7330, -3.6220,
-0.4380

■ 111.6200, 56.8520,
4.9160

■ 181.1280,
-12.1040, -0.9040

■ 102.7520, 65.2880,
6.2160

■ 190.1100,
-20.8610, -1.8930

■ 94.3570, 73.7700,
6.6820

■ 198.3910,
-29.0220, -2.6700

■ 85.3750, 82.5270,
7.6710

■ 207.3730,
-37.7790, -3.6590

■ 82.2290, 85.8740,
7.5860

■ 215.1980,
-44.6560, -5.6800

■ 222.2420,
-47.9560, -11.9560

Harmonies

Analogous

The Analogous color harmony consists of three colors that are next to each other on the color wheel.



147.0630, 22.0520, 7.8440



146.3740, 22.3740, 2.0060



145.0480, 17.2400, -4.0720

Triad

The Triadic color harmony groups three colors that are evenly spaced from another and form a triangle on the color wheel.



146.3740, 22.3740, 2.0060



140.8680, -17.6040, -11.3640



145.9640, -8.3460, 8.0860

Complementary

The Complementary color scheme is a pair of colors which are on the opposite of each other on the color wheel.



146.3740, 22.3740, 2.0060



147.6260, -22.3740, -2.0060

Split Complementary

Split-complementary colors differ from the complementary color scheme. The scheme consists of three colors, the original color and two neighbors of the complement color.



143.4570, -20.2200, 3.0120



146.3740, 22.3740, 2.0060



140.5560, -25.3530, -8.5930

Square

The Square scheme is like the rectangle color scheme, but the four colors are evenly spaced on the color wheel.



146.3740, 22.3740, 2.0060



142.2130, -5.4540, -11.2940



141.5330, -26.5460, -3.4900



147.4880, 4.8580, 11.0820

Rectangle

The Rectangle color scheme consists of four colors that form a rectangle on the color wheel.



146.3740, 22.3740, 2.0060



144.2320, 10.7300, -7.2380



141.5330, -26.5460, -3.4900



145.5720, -13.1140, 6.3900

Sweetspot

The Sweet Spot groups the original color and five complimentary colors.



146.3740, 22.3740, 2.0060



210.0180, 8.7570, 0.9890



141.5760, 16.5940, 18.6580



104.0500, 5.7310, 0.7630



237.0000, -0.0000, -0.0000



110.0000, 0.0000, 0.0000

Same Dimension

The Same Dimension uses a secret algorithm to generate beautiful new colors.



146.3740, 22.3740, 2.0060



184.2460, 34.4780, 2.9100



159.2880, 16.3240, -9.5000



79.5660, 4.2180, 0.6500



71.8410, 75.2830, 6.7950



9.5020, 10.2700, 1.1020

Inverse Universe

The Inverse Universe completely reimagines the original color for something new.



147.6260, -22.3740, -2.0060



186.3410, -34.7530, -3.4330



134.7120, -16.3240, 9.5000



79.8470, -3.9430, -0.1270



76.1590, -75.2830, -6.7950



10.4980, -10.2700, -1.1020

Previews

White Background



This preview shows how the YIQ color 146.3740, 22.3740, 2.0060 looks on a white background.

Color Contrast Check

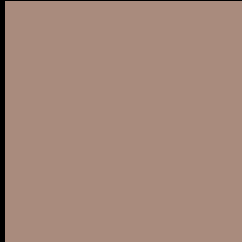
Large Text (above 18pt) WCAG AA ✓ Pass

Any Text WCAG AA × Fail

Large Text (above 18pt) WCAG AAA × Fail

Any Text WCAG AAA × Fail

Black Background



This preview shows how the YIQ color 146.3740, 22.3740, 2.0060 looks on a black background.

Color Contrast Check

Large Text (above 18pt) WCAG AA ✓ Pass

Any Text WCAG AA ✓ Pass

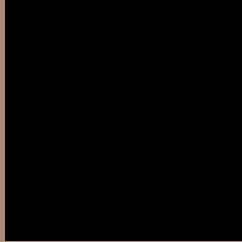
Large Text (above 18pt) WCAG AAA ✓ Pass

Any Text WCAG AAA × Fail

If you want to check with other color combinations, try the [Color Contrast Checker](#).

YIQ 146.3740, 22.3740, 2.0060

Background



This preview shows how black text looks on a background with the YIQ color 146.3740, 22.3740, 2.0060.



This preview shows how white text looks on a background with the YIQ color 146.3740, 22.3740,

Color Blindness Simulation

Color vision deficiency is a very complex topic, and I could not describe the different causes any better than Wikipedia does, so if you want to learn more, you should check out their [article about color blindness](#).

Dichromacy



Original Color

146.3740, 22.3740, 2.0060

Protanopia

145.1550, 9.6290, -3.8030

Deuteranopia

146.3630, 20.9070, 1.0590



Tritanopia

147.6050, 17.6500, 10.5300

Trichromacy



Original Color

146.3740, 22.3740, 2.0060

Protanomaly

145.6610, 14.0760, -1.7960

Deuteranomaly

146.6620, 21.5030, 1.2710

Tritanomaly

146.9810, 19.3470, 7.3070

Monochromacy



Original Color

146.3740, 22.3740, 2.0060

Achromatopsia

146.0000, -0.0000, -0.0000

Achromatomaly

145.7190, 8.1610, 0.7770

CSS Examples

Text

The CSS property to change the color of the text to YIQ 146.3740, 22.3740, 2.0060 is called "color". The color property can be set on classes, ids or directly on the HTML element.

This example shows how text in the color `rgb(169, 139, 125)` looks like.

```
.text, #text, p{  
    color:rgb(169, 139, 125)  
}
```

If you want to add a text shadow in that color use the text-shadow property, you can generate a text shadow directly with our [CSS Text Shadow Generator](#).

Here you see how black text with a 4 pixel rgb(169, 139, 125) colored shadow looks like.

```
.shadow{ text-shadow: 4px 4px 2px rgb(169, 139, 125) }
```

Border

The CSS property to change the border of an element to YIQ 146.3740, 22.3740, 2.0060 is called "border". The border property can be set on classes, ids or directly on the HTML element.

This example shows the color as border, it can be applied via the CSS property "border" or "border-color".

```
.border, #border, table{ border:4px solid rgb(169, 139, 125) }
```


If only the border color should be changed use the property `border-color`.

```
.border{ border-color:rgb(169, 139, 125) }
```

If you want to add a box shadow in that color use:

Here you see how a box with a 4 pixel `rgb(169, 139, 125)` colored shadow looks like.

```
.boxshadow{ -moz-box-shadow:4px 4px 4px  
4px rgb(169, 139, 125); -webkit-box-  
shadow:4px 4px 4px 4px rgb(169, 139, 125);  
box-shadow:4px 4px 4px 4px rgb(169, 139,  
125) }
```

Background

The CSS property to change the background color of an element to YIQ 146.3740, 22.3740, 2.0060 is called "background". The background property can be set on classes, ids or directly on the HTML element.

```
.background, #background, body{  
background: rgb(169, 139, 125) }
```

If only the background color should be changed can be used:

```
.background{ background-color: rgb(169,  
139, 125) }
```

This example shows the color as background, it is applied via the CSS property "background".

To optimize and compress your CSS code, you can use our [online CSS compressor and optimizer](#) based on csstidy. If you want to create a linear or radial gradient as background or border, check our [CSS Gradient Generator](#).

Hey! You found this booklet interesting? Support Converting Colors with the new Membership Option!

The pro membership hides all ads, plus gives you double the colors in the color bucket, and more awesome pro features!

[Learn more, Memberships starting at \\$2.50/m!](#)

**Follow me
on Twitter!**

@ConvertingColor