

Converting Colors

YIQ(146.6740, 30.3970, 5.2850)

Have a look what the booklet for
YIQ(146.6740, 30.3970, 5.2850)
contains.

YIQ(146.6740, 30.3970, 5.2850)	3
<i>Conversions</i>	4
<i>Details</i>	6
<i>Harmonies</i>	12
<i>Previews</i>	24
<i>Color Blindness Simulation</i>	28
<i>CSS Examples</i>	31

Color

**YIQ(146.6740, 30.3970,
5.2850)**

Conversions

Conversions Part 1

Format	Color
Hex	B3877A
RGB	179, 135, 122
RGB Percent	70%, 53%, 48%
CMY	0.2979, 0.4706, 0.5214
CMYK	0.00, 0.25, 0.32, 0.30
HSL	14°, 27%, 59%
HSV	14°, 32%, 70%
XYZ	30.7724, 28.3154, 22.2667
YIQ	146.6740, 30.3970, 5.2850

Conversions

Conversions Part 2

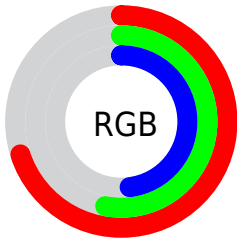
Format	Color
R_{YB}	179, 139, 122
Decimal	11765626
CIE Lab	60.17, 15.00, 13.50
CIE LCh	60, 20.180, 41.990
Yxy	28.3154, 0.3783, 0.3480
Android (android.graphics.Color)	4289955706 (0xFFB3877A)
YUV	146.6740, -12.1643, 28.3499
Hunter-Lab	53.2122, 10.1045, 12.4386

Details

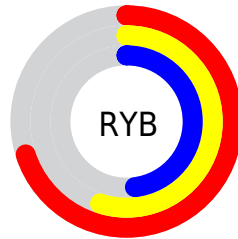
The YIQ color $146.6740, 30.3970, 5.2850$ is a dark color, and the websafe version is hex $CC9999$. A complement of this color would be $154.3260, -30.3970, -5.2850$, and the grayscale version is $147.0000, -0.0000, 0.0000$.

A 20% lighter version of the original color is $200.7560, 33.1020, 5.8220$, and $95.5920, 27.6920, 4.7480$ is the 20% darker color. If you saturate the color by 10%, you get $136.4040, 40.0250, 7.0090$, and if you desaturate by 10%, it is $156.9440, 20.7690, 3.5610$.

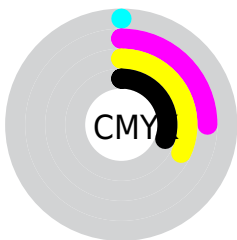
Distribution



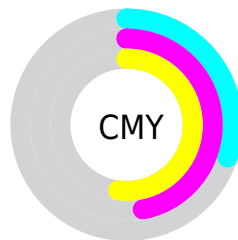
- Red (70%)
- Green (53%)
- Blue (48%)



- Red (70%)
- Yellow (55%)
- Blue (48%)



- Cyan (0%)
- Magenta (25%)
- Yellow (32%)
- Black (30%)



- Cyan (30%)
- Magenta (47%)
- Yellow (52%)

Brightness & Saturation Gradients

These gradients show how the YIQ color 146.6740, 30.3970, 5.2850 changes by changing the brightness by 10 percent. The first figure shows a shift by +10% for each color and the second figure -10%.

Similar to the brightness gradients but the following saturation gradients show a change of the YIQ color 146.6740, 30.3970, 5.2850 by changing the saturation by 10% instead.

■ 146.6740, 30.3970,
5.2850

■ 146.6740, 30.3970,
5.2850

255.0000, -0.0000,
-0.0000

■ 121.0760, 29.2050,
4.8610

■ 200.7560, 33.1020,
5.8220

■ 95.5920, 27.6920,
4.7480

■ 226.0650, 27.7380,
3.9140

■ 71.8090, 25.5830,
4.4230

■ 246.2800, 10.7750,
-2.5450

■ 49.0260, 23.4740,
4.0980

■ 26.6730, 22.9700,
2.2180

■ 8.7850, 16.9630,
6.4590

■ 0.0000, 0.0000,

0.0000

■ 146.6740, 30.3970,
5.2850

■ 146.6740, 30.3970,
5.2850

■ 136.4040, 40.0250,
7.0090

■ 156.9440, 20.7690,
3.5610

■ 126.1340, 49.6530,
8.7330

■ 167.2140, 11.1410,
1.8370

■ 115.8640, 59.2810,
10.4570

■ 176.8970, 1.7880,
0.6360

■ 106.1810, 68.6340,
11.6580

■ 187.1670, -7.8400,
-1.0880

■ 96.0250, 77.9410,
13.6930

■ 197.4370,
-17.4680, -2.8120

■ 85.7550, 87.5690,
15.4170

■ 207.5930,
-26.7750, -4.8470

■ 77.5880, 95.4090,
16.5050

■ 217.8630,
-36.4030, -6.5710

■ 226.9930,
-42.8210, -11.4050

■ 232.2760,
-45.2960, -16.1120

Harmonies

Analogous

The Analogous color harmony consists of three colors that are next to each other on the color wheel.



147.3350, 27.2780, 12.2540



146.6740, 30.3970, 5.2850



145.1800, 25.6760, -2.7720

Triad

The Triadic color harmony groups three colors that are evenly spaced from another and form a triangle on the color wheel.



146.6740, 30.3970, 5.2850



138.7490, -18.8870, -15.6470



145.1140, -17.5160, 9.0760

Complementary

The Complementary color scheme is a pair of colors which are on the opposite of each other on the color wheel.



146.6740, 30.3970, 5.2850



154.3260, -30.3970, -5.2850

Split Complementary

Split-complementary colors differ from the complementary color scheme. The scheme consists of three colors, the original color and two neighbors of the complement color.



141.2320, -32.8280, 0.2280



146.6740, 30.3970, 5.2850



137.3160, -33.6050, -13.2290

Square

The Square scheme is like the rectangle color scheme, but the four colors are evenly spaced on the color wheel.



146.6740, 30.3970, 5.2850



141.2580, -1.3270, -14.5030



138.2540, -39.0620, -7.9420



147.5570, 0.4100, 14.6020

Rectangle

The Rectangle color scheme consists of four colors that form a rectangle on the color wheel.



146.6740, 30.3970, 5.2850



144.0110, 18.6620, -7.8180



138.2540, -39.0620, -7.9420



143.5970, -23.4300, 6.1220

Sweetspot

The Sweet Spot groups the original color and five complimentary colors.



146.6740, 30.3970, 5.2850



218.8120, 12.3330, 2.2610



144.1730, 19.5270, 26.0790



108.9470, 7.5190, 1.3990



245.0000, -0.0000, 0.0000



117.0000, -0.0000, 0.0000

Same Dimension

The Same Dimension uses a secret algorithm to generate beautiful new colors.



146.6740, 30.3970, 5.2850



182.0520, 46.9480, 8.1960



163.1100, 22.6970, -9.3590



83.8650, 4.8140, 0.8620



66.2920, 81.5630, 14.1310



11.2960, 13.8460, 2.3740

Inverse Universe

The Inverse Universe completely reimagines the original color for something new.



154.3260, -30.3970, -5.2850



193.9480, -46.9480, -8.1960



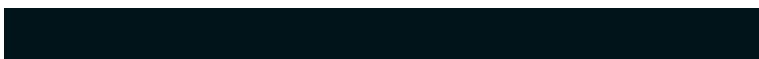
137.8900, -22.6970, 9.3590



85.1350, -4.8140, -0.8620



86.7080, -81.5630, -14.1310



14.7040, -13.8460, -2.3740

Previews

White Background



This preview shows how the YIQ color 146.6740, 30.3970, 5.2850 looks on a white background.

Color Contrast Check

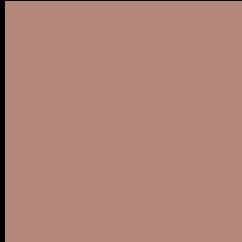
Large Text (above 18pt) WCAG AA ✓ Pass

Any Text WCAG AA × Fail

Large Text (above 18pt) WCAG AAA × Fail

Any Text WCAG AAA × Fail

Black Background



This preview shows how the YIQ color 146.6740, 30.3970, 5.2850 looks on a black background.

Color Contrast Check

Large Text (above 18pt) WCAG AA ✓ Pass

Any Text WCAG AA ✓ Pass

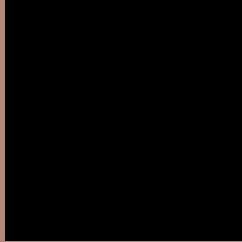
Large Text (above 18pt) WCAG AAA ✓ Pass

Any Text WCAG AAA × Fail

If you want to check with other color combinations, try the [Color Contrast Checker](#).

YIQ 146.6740, 30.3970, 5.2850

Background



This preview shows how black text looks on a background with the YIQ color 146.6740, 30.3970, 5.2850.



This preview shows how white text looks on a background with the YIQ color 146.6740, 30.3970,

Color Blindness Simulation

Color vision deficiency is a very complex topic, and I could not describe the different causes any better than Wikipedia does, so if you want to learn more, you should check out their [article about color blindness](#).

Dichromacy



Original Color

146.6740, 30.3970, 5.2850

Protanopia

145.0410, 9.9500, -4.1140

Deuteranopia

146.2060, 22.7870, 0.0270



Tritanopia

147.7910, 25.9940, 13.4980

Trichromacy



Original Color

146.6740, 30.3970, 5.2850

Protanomaly

145.4550, 17.6520, -0.5240

Deuteranomaly

146.2280, 25.7210, 1.9210

Tritanomaly

147.2810, 27.3700, 10.5860

Monochromacy



Original Color

146.6740, 30.3970, 5.2850

Achromatopsia

147.0000, -0.0000, 0.0000

Achromatomaly

147.2140, 11.1410, 1.8370

CSS Examples

Text

The CSS property to change the color of the text to YIQ 146.6740, 30.3970, 5.2850 is called "color". The color property can be set on classes, ids or directly on the HTML element.

This example shows how text in the color `rgb(179, 135, 122)` looks like.

```
.text, #text, p{  
    color:rgb(179, 135, 122)  
}
```

If you want to add a text shadow in that color use the text-shadow property, you can generate a text shadow directly with our [CSS Text Shadow Generator](#).

Here you see how black text with a 4 pixel rgb(179, 135, 122) colored shadow looks like.

```
.shadow{ text-shadow: 4px 4px 2px rgb(179, 135, 122) }
```

Border

The CSS property to change the border of an element to YIQ 146.6740, 30.3970, 5.2850 is called "border". The border property can be set on classes, ids or directly on the HTML element.

This example shows the color as border, it can be applied via the CSS property "border" or "border-color".

```
.border, #border, table{ border:4px solid rgb(179, 135, 122) }
```


If only the border color should be changed use the property `border-color`.

```
.border{ border-color:rgb(179, 135, 122) }
```

If you want to add a box shadow in that color use:

Here you see how a box with a 4 pixel `rgb(179, 135, 122)` colored shadow looks like.

```
.boxshadow{ -moz-box-shadow:4px 4px 4px  
4px rgb(179, 135, 122); -webkit-box-  
shadow:4px 4px 4px 4px rgb(179, 135, 122);  
box-shadow:4px 4px 4px 4px rgb(179, 135,  
122) }
```

Background

The CSS property to change the background color of an element to YIQ 146.6740, 30.3970, 5.2850 is called "background". The background property can be set on classes, ids or directly on the HTML element.

```
.background, #background, body{  
background: rgb(179, 135, 122) }
```

If only the background color should be changed can be used:

```
.background{ background-color: rgb(179,  
135, 122) }
```

This example shows the color as background, it is applied via the CSS property "background".

To optimize and compress your CSS code, you can use our [online CSS compressor and optimizer](#) based on csstidy. If you want to create a linear or radial gradient as background or border, check our [CSS Gradient Generator](#).

Hey! You found this booklet interesting? Support Converting Colors with the new Membership Option!

The pro membership hides all ads, plus gives you double the colors in the color bucket, and more awesome pro features!

[Learn more, Memberships starting at \\$2.50/m!](#)

**Follow me
on Twitter!**

@ConvertingColor