

Converting Colors

YIQ(146.7110, 28.9750, 9.0310)

Have a look what the booklet for
YIQ(146.7110, 28.9750, 9.0310)
contains.

YIQ(146.7110, 28.9750, 9.0310)	3
<i>Conversions</i>	4
<i>Details</i>	6
<i>Harmonies</i>	12
<i>Previews</i>	24
<i>Color Blindness Simulation</i>	28
<i>CSS Examples</i>	31

Color

**YIQ(146.7110, 28.9750,
9.0310)**

Conversions

Conversions Part 1

Format	Color
Hex	B48582
RGB	180, 133, 130
RGB Percent	71%, 52%, 51%
CMY	0.2940, 0.4785, 0.4901
CMYK	0.00, 0.26, 0.28, 0.29
HSL	4°, 25%, 61%
HSV	4°, 28%, 71%
XYZ	31.2450, 28.0888, 24.9045
YIQ	146.7110, 28.9750, 9.0310

Conversions

Conversions Part 2

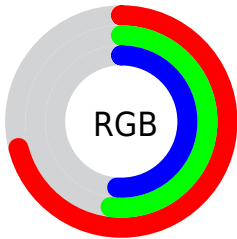
Format	Color
RYB	180, 133, 130
Decimal	11830658
CIELab	59.97, 17.63, 8.67
CIELCh	60, 19.642, 26.189
Yxy	28.0888, 0.3709, 0.3334
Android (android.graphics.Color)	4290020738 (0xFFB48582)
YUV	146.7110, -8.2385, 29.1945
Hunter-Lab	52.9989, 12.4850, 9.2385

Details

The YIQ color **146.7110, 28.9750, 9.0310** is a light color, and the websafe version is hex **CC9999**. A complement of this color would be **163.2890, -28.9750, -9.0310**, and the grayscale version is **147.0000, -0.0000, 0.0000**.

A 20% lighter version of the original color is **200.9070, 31.3590, 9.8790**, and **95.6290, 26.2700, 8.4940** is the 20% darker color. If you saturate the color by 10%, you get **134.6800, 39.4280, 12.3240**, and if you desaturate by 10%, it is **158.7420, 18.5220, 5.7380**.

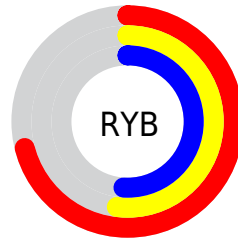
Distribution



Red (71%)

Green (52%)

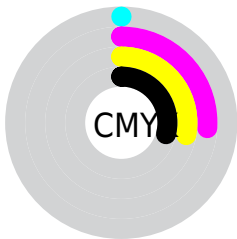
Blue (51%)



Red (71%)

Yellow (52%)

Blue (51%)

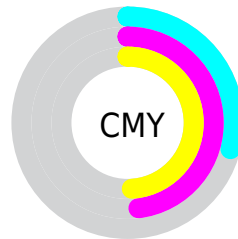


Cyan (0%)

Magenta (26%)

Yellow (28%)

Black (29%)



Cyan (29%)

Magenta (48%)

Yellow (49%)

Brightness & Saturation Gradients

These gradients show how the YIQ color 146.7110, 28.9750, 9.0310 changes by changing the brightness by 10 percent. The first figure shows a shift by +10% for each color and the second figure -10%.

Similar to the brightness gradients but the following saturation gradients show a change of the YIQ color 146.7110, 28.9750, 9.0310 by changing the saturation by 10% instead.

■ 146.7110, 28.9750,
9.0310

■ 146.7110, 28.9750,
9.0310

255.0000, -0.0000,
-0.0000

■ 121.1130, 27.7830,
8.6070

■ 200.9070, 31.3590,
9.8790

■ 95.6290, 26.2700,
8.4940

■ 225.9170, 25.3990,
7.7590

■ 71.7320, 24.4820,
7.8580

■ 246.1320, 8.4360,
1.3000

■ 48.2480, 22.9690,
7.7450

■ 26.3510, 21.1810,
7.1090

■ 9.3830, 18.1550,
6.8830

■ 0.0000, 0.0000,

0.0000

■ 146.7110, 28.9750,
9.0310

■ 146.7110, 28.9750,
9.0310

■ 134.6800, 39.4280,
12.3240

■ 158.7420, 18.5220,
5.7380

■ 122.6490, 49.8810,
15.6170

■ 170.7730, 8.0690,
2.4450

■ 110.6180, 60.3340,
18.9100

■ 182.8040, -2.3840,
-0.8480

■ 98.5870, 70.7870,
22.2030

■ 194.8350,
-12.8370, -4.1410

■ 86.5560, 81.2400,
25.4960

■ 206.8660,
-23.2900, -7.4340

■ 74.5250, 91.6930,
28.7890

■ 218.8970,
-33.7430, -10.7270

■ 62.4940, 102.1460,
32.0820

■ 230.8140,
-43.8750, -14.3310

■ 60.2770, 104.2550,
32.4070

■ 232.5750,
-44.7000, -15.9000

Harmonies

Analogous

The Analogous color harmony consists of three colors that are next to each other on the color wheel.



147.1650, 22.0050, 14.2050



146.7110, 28.9750, 9.0310



145.6690, 28.7930, 1.3130

Triad

The Triadic color harmony groups three colors that are evenly spaced from another and form a triangle on the color wheel.



146.7110, 28.9750, 9.0310



139.9520, -9.2130, -14.7570



142.8740, -25.7680, 4.4400

Complementary

The Complementary color scheme is a pair of colors which are on the opposite of each other on the color wheel.



146.7110, 28.9750, 9.0310



163.2890, -28.9750, -9.0310

Split Complementary

Split-complementary colors differ from the complementary color scheme. The scheme consists of three colors, the original color and two neighbors of the complement color.



138.8570, -36.2660, -3.5460



146.7110, 28.9750, 9.0310



137.6820, -25.9480, -14.3320

Square

The Square scheme is like the rectangle color scheme, but the four colors are evenly spaced on the color wheel.



146.7110, 28.9750, 9.0310



141.9170, 7.0630, -12.3690



137.2280, -36.1730, -10.7410



146.0720, -8.5300, 11.4220

Rectangle

The Rectangle color scheme consists of four colors that form a rectangle on the color wheel.



146.7110, 28.9750, 9.0310



144.7560, 23.9340, -4.2420



137.2280, -36.1730, -10.7410



141.2540, -29.8940, 2.1220

Sweetspot

The Sweet Spot groups the original color and five complimentary colors.



146.7110, 28.9750, 9.0310



222.2680, 11.0490, 3.5050



150.4220, 14.3920, 25.5280



109.2890, 6.5560, 2.3320



245.0000, -0.0000, 0.0000



117.0000, -0.0000, 0.0000

Same Dimension

The Same Dimension uses a secret algorithm to generate beautiful new colors.



146.7110, 28.9750, 9.0310



183.2570, 45.1130, 13.9210



161.3860, 22.1000, -4.0440



83.2780, 5.0890, 1.3850



51.0300, 88.7130, 27.7290



8.9480, 14.9460, 4.4660

Inverse Universe

The Inverse Universe completely reimagines the original color for something new.



163.2890, -28.9750, -9.0310



208.7430, -45.1130, -13.9210



149.2010, -22.3750, 3.5210



86.3090, -5.3640, -1.9080



101.9700, -88.7130, -27.7290



17.0520, -14.9460, -4.4660

Previews

White Background



This preview shows how the YIQ color 146.7110, 28.9750, 9.0310 looks on a white background.

Color Contrast Check

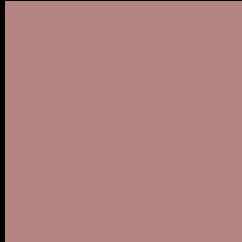
Large Text (above 18pt) WCAG AA ✓ Pass

Any Text WCAG AA ✗ Fail

Large Text (above 18pt) WCAG AAA ✗ Fail

Any Text WCAG AAA ✗ Fail

Black Background



This preview shows how the YIQ color 146.7110, 28.9750, 9.0310 looks on a black background.

Color Contrast Check

Large Text (above 18pt) WCAG AA ✓ Pass

Any Text WCAG AA ✓ Pass

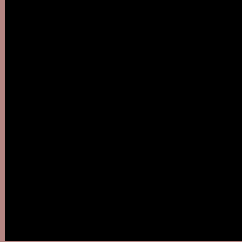
Large Text (above 18pt) WCAG AAA ✓ Pass

Any Text WCAG AAA × Fail

If you want to check with other color combinations, try the [Color Contrast Checker](#).

YIQ 146.7110, 28.9750, 9.0310

Background



This preview shows how black text looks on a background with the YIQ color 146.7110, 28.9750, 9.0310.



This preview shows how white text looks on a background with the YIQ color 146.7110, 28.9750,

Color Blindness Simulation

Color vision deficiency is a very complex topic, and I could not describe the different causes any better than Wikipedia does, so if you want to learn more, you should check out their [article about color blindness](#).

Dichromacy



Original Color

146.7110, 28.9750, 9.0310

Protanopia

144.5830, 5.5480, -1.4280

Deuteranopia

146.2210, 18.4310, 1.8790



Tritanopia

147.0900, 26.5900, 13.7100

Trichromacy



Original Color

146.7110, 28.9750, 9.0310

Protanomaly

145.2960, 13.8460, 2.3740

Deuteranomaly

145.9550, 22.2360, 4.5080

Tritanomaly

147.2210, 27.5990, 11.9430

Monochromacy



Original Color

146.7110, 28.9750, 9.0310

Achromatopsia

147.0000, -0.0000, 0.0000

Achromatomaly

146.9690, 10.4530, 3.2930

CSS Examples

Text

The CSS property to change the color of the text to YIQ 146.7110, 28.9750, 9.0310 is called "color". The color property can be set on classes, ids or directly on the HTML element.

This example shows how text in the color `rgb(180, 133, 130)` looks like.

```
.text, #text, p{  
    color:rgb(180, 133, 130)  
}
```

If you want to add a text shadow in that color use the text-shadow property, you can generate a text shadow directly with our [CSS Text Shadow Generator](#).

Here you see how black text with a 4 pixel rgb(180, 133, 130) colored shadow looks like.

```
.shadow{ text-shadow: 4px 4px 2px rgb(180, 133, 130) }
```

Border

The CSS property to change the border of an element to YIQ 146.7110, 28.9750, 9.0310 is called "border". The border property can be set on classes, ids or directly on the HTML element.

This example shows the color as border, it can be applied via the CSS property "border" or "border-color".

```
.border, #border, table{ border:4px solid rgb(180, 133, 130) }
```


If only the border color should be changed use the property border-color.

```
.border{ border-color:rgb(180, 133, 130) }
```

If you want to add a box shadow in that color use:

Here you see how a box with a 4 pixel rgb(180, 133, 130) colored shadow looks like.

```
.boxshadow{ -moz-box-shadow:4px 4px 4px  
4px rgb(180, 133, 130); -webkit-box-  
shadow:4px 4px 4px 4px rgb(180, 133, 130);  
box-shadow:4px 4px 4px 4px rgb(180, 133,  
130) }
```

Background

The CSS property to change the background color of an element to YIQ 146.7110, 28.9750, 9.0310 is called "background". The background property can be set on classes, ids or directly on the HTML element.

```
.background, #background, body{  
background: rgb(180, 133, 130) }
```

If only the background color should be changed can be used:

```
.background{ background-color: rgb(180,  
133, 130) }
```

This example shows the color as background, it is applied via the CSS property "background".

To optimize and compress your CSS code, you can use our [online CSS compressor and optimizer](#) based on csstidy. If you want to create a linear or radial gradient as background or border, check our [CSS Gradient Generator](#).

Hey! You found this booklet interesting? Support Converting Colors with the new Membership Option!

The pro membership hides all ads, plus gives you double the colors in the color bucket, and more awesome pro features!

[Learn more, Memberships starting at \\$2.50/m!](#)

**Follow me
on Twitter!**

@ConvertingColor