

Converting Colors

YIQ(146.7140, 15.7250, 6.8690)

Have a look what the booklet for
YIQ(146.7140, 15.7250, 6.8690)
contains.

YIQ(146.7140, 15.7250, 6.8690)	3
<i>Conversions</i>	4
<i>Details</i>	6
<i>Harmonies</i>	12
<i>Previews</i>	24
<i>Color Blindness Simulation</i>	28
<i>CSS Examples</i>	31

Color

**YIQ(146.7140, 15.7250,
6.8690)**

Conversions

Conversions Part 1

Format	Color
Hex	A68A8D
RGB	166, 138, 141
RGB Percent	65%, 54%, 55%
CMY	0.3489, 0.4589, 0.4470
CMYK	0.00, 0.17, 0.15, 0.35
HSL	354°, 14%, 60%
HSV	354°, 17%, 65%
XYZ	29.6252, 28.2060, 29.0882
YIQ	146.7140, 15.7250, 6.8690

Conversions

Conversions Part 2

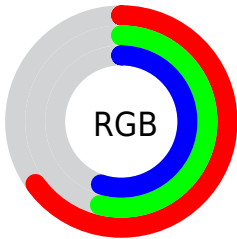
Format	Color
R _Y B	166, 138, 141
Decimal	10914445
CIE Lab	60.07, 11.10, 2.35
CIE LCh	60, 11.349, 11.966
Yxy	28.2060, 0.3408, 0.3245
Android (android.graphics.Color)	4289104525 (0xFFA68A8D)
YUV	146.7140, -2.8170, 16.9138
Hunter-Lab	53.1093, 6.6287, 4.7032

Details

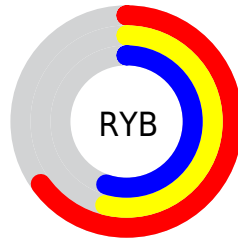
The YIQ color **146.7140, 15.7250, 6.8690** is a dark color, and the websafe version is hex **999999**. A complement of this color would be **157.2860, -15.7250, -6.8690**, and the grayscale version is **147.0000, -0.0000, 0.0000**.

A 20% lighter version of the original color is **200.4260, 16.5960, 7.6040**, and **96.1160, 14.5330, 6.4450** is the 20% darker color. If you saturate the color by 10%, you get **135.0250, 25.2150, 11.0950**, and if you desaturate by 10%, it is **158.4030, 6.2350, 2.6430**.

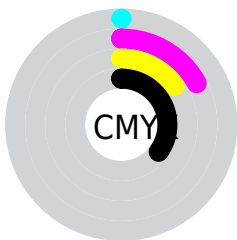
Distribution



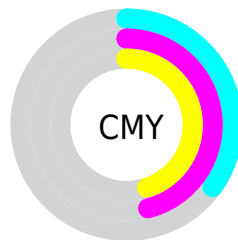
- Red (65%)
- Green (54%)
- Blue (55%)



- Red (65%)
- Yellow (54%)
- Blue (55%)



- Cyan (0%)
- Magenta (17%)
- Yellow (15%)
- Black (35%)



- Cyan (35%)
- Magenta (46%)
- Yellow (45%)

Brightness & Saturation Gradients

These gradients show how the YIQ color 146.7140, 15.7250, 6.8690 changes by changing the brightness by 10 percent. The first figure shows a shift by +10% for each color and the second figure -10%.

Similar to the brightness gradients but the following saturation gradients show a change of the YIQ color 146.7140, 15.7250, 6.8690 by changing the saturation by 10% instead.

■ 146.7140, 15.7250,
6.8690

■ 146.7140, 15.7250,
6.8690

255.0000, -0.0000,
-0.0000

■ 121.1160, 14.5330,
6.4450

■ 200.4260, 16.5960,
7.6040

■ 96.1160, 14.5330,
6.4450

■ 228.6110, 17.5130,
7.5050

■ 72.5180, 13.3410,
6.0210

■ 250.4350, 3.2090,
2.4170

■ 49.2190, 12.7450,
5.8090

■ 28.6210, 11.5530,
5.3850

■ 7.1760, 14.3040,
5.0880

■ 0.0000, 0.0000,

0.0000

146.7140, 15.7250,
6.8690

146.7140, 15.7250,
6.8690

135.0250, 25.2150,
11.0950

158.4030, 6.2350,
2.6430

123.9230, 34.4300,
14.7980

169.5050, -2.9800,
-1.0600

112.3480, 43.5990,
19.3350

181.0800,
-12.1490, -5.5970

101.2460, 52.8140,
23.0380

192.1820,
-21.3640, -9.3000

89.5570, 62.3040,
27.2640

203.8710,
-30.8540, -13.5260

77.8680, 71.7940,
31.4900

215.5600,
-40.3440, -17.7520

■ 66.7660, 81.0090,
35.1930

■ 226.6620,
-49.5590, -21.4550

■ 55.1910, 90.1780,
39.7300

■ 228.3890,
-53.0440, -18.8680

■ 51.6860, 93.1580,
40.7900

Harmonies

Analogous

The Analogous color harmony consists of three colors that are next to each other on the color wheel.



146.9460, 9.2600, 8.3960



146.7140, 15.7250, 6.8690



145.9760, 17.7430, 3.3350

Triad

The Triadic color harmony groups three colors that are evenly spaced from another and form a triangle on the color wheel.



146.7140, 15.7250, 6.8690



142.6590, -0.7780, -7.9300



142.8440, -17.0560, 0.7360

Complementary

The Complementary color scheme is a pair of colors which are on the opposite of each other on the color wheel.



146.7140, 15.7250, 6.8690



157.2860, -15.7250, -6.8690

Split Complementary

Split-complementary colors differ from the complementary color scheme. The scheme consists of three colors, the original color and two neighbors of the complement color.



141.9420, -20.4480, -3.8720



146.7140, 15.7250, 6.8690



141.7550, -9.8560, -8.6080

Square

The Square scheme is like the rectangle color scheme, but the four colors are evenly spaced on the color wheel.



146.7140, 15.7250, 6.8690



143.9160, 8.8040, -5.3720



141.3890, -17.5130, -7.5050



144.7850, -9.4000, 5.1600

Rectangle

The Rectangle color scheme consists of four colors that form a rectangle on the color wheel.



146.7140, 15.7250, 6.8690



145.3840, 16.4140, -0.1140



141.3890, -17.5130, -7.5050



142.4200, -18.7980, -0.7340

Sweetspot

The Sweet Spot groups the original color and five complimentary colors.



146.7140, 15.7250, 6.8690



209.4030, 6.2350, 2.6430



148.6670, 5.9120, 14.0080



105.2070, 3.8510, 1.7950



237.0000, -0.0000, -0.0000



110.0000, 0.0000, 0.0000

Same Dimension

The Same Dimension uses a secret algorithm to generate beautiful new colors.



146.7140, 15.7250, 6.8690



186.7260, 24.6190, 10.8830



152.8290, 13.6630, 0.1830



78.5060, 4.4470, 2.0070



46.0760, 83.0720, 36.3520



6.2080, 11.2780, 4.8620

Inverse Universe

The Inverse Universe completely reimagines the original color for something new.



146.7140, 15.7250, 6.8690



186.7260, 24.6190, 10.8830



151.1710, -13.6630, -0.1830



78.5060, 4.4470, 2.0070



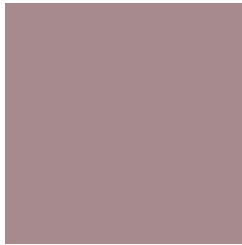
46.0760, 83.0720, 36.3520



6.2080, 11.2780, 4.8620

Previews

White Background



This preview shows how the YIQ color 146.7140, 15.7250, 6.8690 looks on a white background.

Color Contrast Check

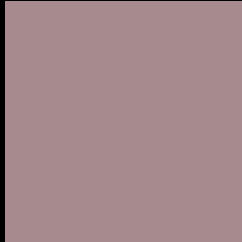
Large Text (above 18pt) WCAG AA ✓ Pass

Any Text WCAG AA × Fail

Large Text (above 18pt) WCAG AAA × Fail

Any Text WCAG AAA × Fail

Black Background



This preview shows how the YIQ color 146.7140, 15.7250, 6.8690 looks on a black background.

Color Contrast Check

Large Text (above 18pt) WCAG AA ✓ Pass

Any Text WCAG AA ✓ Pass

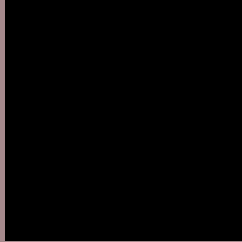
Large Text (above 18pt) WCAG AAA ✓ Pass

Any Text WCAG AAA × Fail

If you want to check with other color combinations, try the [Color Contrast Checker](#).

YIQ 146.7140, 15.7250, 6.8690

Background



This preview shows how black text looks on a background with the YIQ color 146.7140, 15.7250, 6.8690.



This preview shows how white text looks on a background with the YIQ color 146.7140, 15.7250,

6.8690.

Color Blindness Simulation

Color vision deficiency is a very complex topic, and I could not describe the different causes any better than Wikipedia does, so if you want to learn more, you should check out their [article about color blindness](#).

Dichromacy



Original Color

146.7140, 15.7250, 6.8690

Protanopia

145.0110, 1.4670, 0.9470

Deuteranopia

146.3930, 12.1950, 4.7630



Tritanopia

147.2240, 14.3490, 9.7810

Trichromacy



Original Color

146.7140, 15.7250, 6.8690

Protanomaly

145.8160, 6.5100, 3.1660

Deuteranomaly

146.4040, 13.6620, 5.7100

Tritanomaly

146.8820, 15.3120, 8.8480

Monochromacy



Original Color

146.7140, 15.7250, 6.8690

Achromatopsia

147.0000, -0.0000, 0.0000

Achromatomaly

147.1040, 5.6390, 2.4310

CSS Examples

Text

The CSS property to change the color of the text to YIQ 146.7140, 15.7250, 6.8690 is called "color". The color property can be set on classes, ids or directly on the HTML element.

This example shows how text in the color `rgb(166, 138, 141)` looks like.

```
.text, #text, p{  
    color:rgb(166, 138, 141)  
}
```

If you want to add a text shadow in that color use the text-shadow property, you can generate a text shadow directly with our [CSS Text Shadow Generator](#).

Here you see how black text with a 4 pixel rgb(166, 138, 141) colored shadow looks like.

```
.shadow{ text-shadow: 4px 4px 2px rgb(166, 138, 141) }
```

Border

The CSS property to change the border of an element to YIQ 146.7140, 15.7250, 6.8690 is called "border". The border property can be set on classes, ids or directly on the HTML element.

This example shows the color as border, it can be applied via the CSS property "border" or "border-color".

```
.border, #border, table{ border:4px solid rgb(166, 138, 141) }
```


If only the border color should be changed use the property `border-color`.

```
.border{ border-color:rgb(166, 138, 141) }
```

If you want to add a box shadow in that color use:

Here you see how a box with a 4 pixel `rgb(166, 138, 141)` colored shadow looks like.

```
.boxshadow{ -moz-box-shadow:4px 4px 4px  
4px rgb(166, 138, 141); -webkit-box-  
shadow:4px 4px 4px 4px rgb(166, 138, 141);  
box-shadow:4px 4px 4px 4px rgb(166, 138,  
141) }
```

Background

The CSS property to change the background color of an element to YIQ 146.7140, 15.7250, 6.8690 is called "background". The background property can be set on classes, ids or directly on the HTML element.

```
.background, #background, body{  
background: rgb(166, 138, 141) }
```

If only the background color should be changed can be used:

```
.background{ background-color: rgb(166,  
138, 141) }
```

This example shows the color as background, it is applied via the CSS property "background".

To optimize and compress your CSS code, you can use our [online CSS compressor and optimizer](#) based on csstidy. If you want to create a linear or radial gradient as background or border, check our [CSS Gradient Generator](#).

Hey! You found this booklet interesting? Support Converting Colors with the new Membership Option!

The pro membership hides all ads, plus gives you double the colors in the color bucket, and more awesome pro features!

[Learn more, Memberships starting at \\$2.50/m!](#)

**Follow me
on Twitter!**

@ConvertingColor