

Converting Colors

YIQ(146.7220, 57.9460, 40.1700)

Have a look what the booklet for
YIQ(146.7220, 57.9460, 40.1700)
contains.

YIQ(146.7220, 57.9460, 40.1700)	3
<i>Conversions</i>	4
<i>Details</i>	6
<i>Harmonies</i>	12
<i>Previews</i>	24
<i>Color Blindness Simulation</i>	28
<i>CSS Examples</i>	31

Color

**YIQ(146.7220, 57.9460,
40.1700)**

Conversions

Conversions Part 1

Format	Color
Hex	E36997
RGB	227, 105, 151
RGB Percent	89%, 41%, 59%
CMY	0.1095, 0.5884, 0.4076
CMYK	0.00, 0.54, 0.33, 0.11
HSL	337°, 69%, 65%
HSV	337°, 54%, 89%
XYZ	42.3405, 28.6728, 32.6021
YIQ	146.7220, 57.9460, 40.1700

Conversions

Conversions Part 2

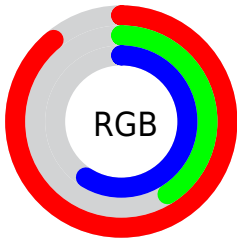
Format	Color
R _Y B	227, 105, 151
Decimal	14903703
CIE Lab	60.49, 52.16, -1.92
CIE LCh	60, 52.194, 357.894
Yxy	28.6728, 0.4086, 0.2767
Android (android.graphics.Color)	4293093783 (0xFFE36997)
YUV	146.7220, 2.1091, 70.4038
Hunter-Lab	53.5470, 47.4357, 1.3842

Details

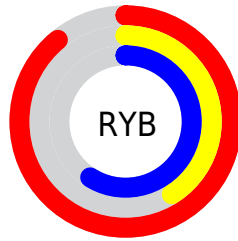
The YIQ color **146.7220, 57.9460, 40.1700** is a light color, and the websafe version is hex **CC6699**. A complement of this color would be **185.2780, -57.9460, -40.1700**, and the grayscale version is **147.0000, -0.0000, 0.0000**.

A 20% lighter version of the original color is **193.5350, 42.1750, 34.1350**, and **90.9820, 54.2780, 40.5660** is the 20% darker color. If you saturate the color by 10%, you get **131.6250, 68.7650, 47.8450**, and if you desaturate by 10%, it is **161.8190, 47.1270, 32.4950**.

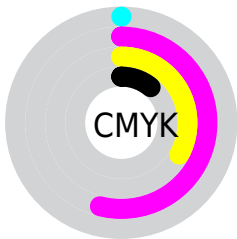
Distribution



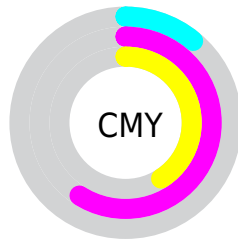
- Red (89%)
- Green (41%)
- Blue (59%)



- Red (89%)
- Yellow (41%)
- Blue (59%)



- Cyan (0%)
- Magenta (54%)
- Yellow (33%)
- Black (11%)



- Cyan (11%)
- Magenta (59%)
- Yellow (41%)

Brightness & Saturation Gradients

These gradients show how the YIQ color 146.7220, 57.9460, 40.1700 changes by changing the brightness by 10 percent. The first figure shows a shift by +10% for each color and the second figure -10%.

Similar to the brightness gradients but the following saturation gradients show a change of the YIQ color 146.7220, 57.9460, 40.1700 by changing the saturation by 10% instead.

■ 146.7220, 57.9460,
40.1700

■ 146.7220, 57.9460,
40.1700

■ 255.0000, -0.0000,
-0.0000

■ 118.9390, 55.8370,
39.8450

■ 193.5350, 42.1750,
34.1350

■ 90.9820, 54.2780,
40.5660

■ 213.1630, 25.4870,
28.1990

■ 59.9160, 54.6440,
44.9480

■ 232.6940, 10.4500,
19.8740

■ 39.3450, 48.8220,
40.3260

■ 249.7170, 2.4750,
4.7070

■ 28.8780, 39.4710,
28.0710

■ 18.6670, 32.2750,
15.3070

■ 6.9910, 13.3870,

5.1870

■ 0.0000, 0.0000,
0.0000

■ 146.7220, 57.9460,
40.1700

■ 146.7220, 57.9460,
40.1700

■ 131.6250, 68.7650,
47.8450

■ 161.8190, 47.1270,
32.4950

■ 117.1150, 79.3090,
54.9970

■ 176.3290, 36.5830,
25.3430

■ 102.0180, 90.1280,
62.6720

■ 191.4260, 25.7640,
17.6680

■ 86.9210, 100.9470,
70.3470

■ 206.6370, 14.6240,
10.3040

■ 77.6770, 107.6860,
74.8700

■ 221.1470, 4.0800,
3.1520

■ 236.2440, -6.7390,
-4.5230

■ 246.0580,
-15.0830, -7.4910

■ 246.6280,
-16.6880, -5.9360

Harmonies

Analogous

The Analogous color harmony consists of three colors that are next to each other on the color wheel.



149.8230, 24.1090, 42.1650



146.7220, 57.9460, 40.1700



144.4240, 72.8040, 24.1960

Triad

The Triadic color harmony groups three colors that are evenly spaced from another and form a triangle on the color wheel.



146.7220, 57.9460, 40.1700



136.5700, 14.4490, -36.1030



121.1030, -116.4080, -15.8960

Complementary

The Complementary color scheme is a pair of colors which are on the opposite of each other on the color wheel.



146.7220, 57.9460, 40.1700



185.2780, -57.9460, -40.1700

Split Complementary

Split-complementary colors differ from the complementary color scheme. The scheme consists of three colors, the original color and two neighbors of the complement color.



120.0480, -106.5480, -29.3960



146.7220, 57.9460, 40.1700



127.1310, -35.6630, -42.0230

Square

The Square scheme is like the rectangle color scheme, but the four colors are evenly spaced on the color wheel.



146.7220, 57.9460, 40.1700



140.8520, 49.2460, -22.4500



114.6900, -91.4610, -44.0130



120.2430, -110.4500, -2.7220

Rectangle

The Rectangle color scheme consists of four colors that form a rectangle on the color wheel.



146.7220, 57.9460, 40.1700



144.0410, 71.8440, 8.5480



114.6900, -91.4610, -44.0130



121.1370, -113.7480, -20.0520

Sweetspot

The Sweet Spot groups the original color and five complimentary colors.



146.7220, 57.9460, 40.1700



228.0830, 19.3000, 13.6680



141.3330, 5.5380, 53.8420



111.5010, 12.0110, 8.0990



0.0000, 0.0000, 0.0000



128.0000, -0.0000, -0.0000

Same Dimension

The Same Dimension uses a secret algorithm to generate beautiful new colors.



146.7220, 57.9460, 40.1700



145.8160, 78.7130, 54.7850



149.6960, 68.8620, 18.5420



107.1580, 5.5470, 4.0990



61.1590, 85.1770, 58.7850



17.4150, 24.2970, 16.7210

Inverse Universe

The Inverse Universe completely reimagines the original color for something new.



146.7220, 57.9460, 40.1700



145.8160, 78.7130, 54.7850



182.3040, -68.8620, -18.5420



107.1580, 5.5470, 4.0990



61.1590, 85.1770, 58.7850



17.4150, 24.2970, 16.7210

Previews

White Background



This preview shows how the YIQ color 146.7220, 57.9460, 40.1700 looks on a white background.

Color Contrast Check

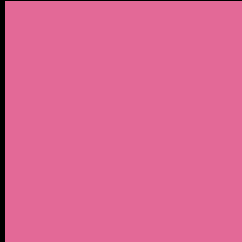
Large Text (above 18pt) WCAG AA ✓ Pass

Any Text WCAG AA × Fail

Large Text (above 18pt) WCAG AAA × Fail

Any Text WCAG AAA × Fail

Black Background



This preview shows how the YIQ color 146.7220, 57.9460, 40.1700 looks on a black background.

Color Contrast Check

Large Text (above 18pt) WCAG AA ✓ Pass

Any Text WCAG AA ✓ Pass

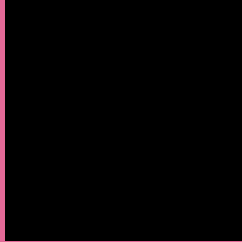
Large Text (above 18pt) WCAG AAA ✓ Pass

Any Text WCAG AAA × Fail

If you want to check with other color combinations, try the [Color Contrast Checker](#).

YIQ 146.7220, 57.9460, 40.1700

Background



This preview shows how black text looks on a background with the YIQ color 146.7220, 57.9460, 40.1700.



This preview shows how white text looks on a background with the YIQ color 146.7220, 57.9460,

Color Blindness Simulation

Color vision deficiency is a very complex topic, and I could not describe the different causes any better than Wikipedia does, so if you want to learn more, you should check out their [article about color blindness](#).

Dichromacy



Original Color

146.7220, 57.9460, 40.1700

Protanopia

147.0390, -12.9310, 8.5810

Deuteranopia

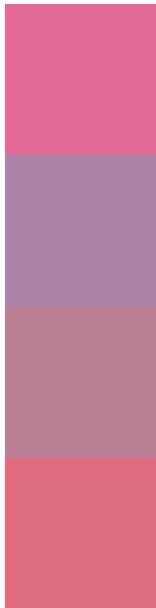
148.0230, 10.3610, 4.9610



Tritanopia

145.6990, 64.7800, 26.4440

Trichromacy



Original Color

146.7220, 57.9460, 40.1700

Protanomaly

146.7760, 13.1550, 20.4110

Deuteranomaly

147.7960, 27.5980, 17.4700

Tritanomaly

146.1920, 62.0740, 31.4340

Monochromacy



Original Color

146.7220, 57.9460, 40.1700

Achromatopsia

147.0000, -0.0000, 0.0000

Achromatomaly

146.9800, 21.0880, 14.3040

CSS Examples

Text

The CSS property to change the color of the text to YIQ 146.7220, 57.9460, 40.1700 is called "color". The color property can be set on classes, ids or directly on the HTML element.

This example shows how text in the color `rgb(227, 105, 151)` looks like.

```
.text, #text, p{  
    color:rgb(227, 105, 151)  
}
```

If you want to add a text shadow in that color use the text-shadow property, you can generate a text shadow directly with our [CSS Text Shadow Generator](#).

Here you see how black text with a 4 pixel rgb(227, 105, 151) colored shadow looks like.

```
.shadow{ text-shadow: 4px 4px 2px rgb(227, 105, 151) }
```

Border

The CSS property to change the border of an element to YIQ 146.7220, 57.9460, 40.1700 is called "border". The border property can be set on classes, ids or directly on the HTML element.

This example shows the color as border, it can be applied via the CSS property "border" or "border-color".

```
.border, #border, table{ border:4px solid rgb(227, 105, 151) }
```


If only the border color should be changed use the property `border-color`.

```
.border{ border-color:rgb(227, 105, 151) }
```

If you want to add a box shadow in that color use:

Here you see how a box with a 4 pixel `rgb(227, 105, 151)` colored shadow looks like.

```
.boxshadow{ -moz-box-shadow:4px 4px 4px  
4px rgb(227, 105, 151); -webkit-box-  
shadow:4px 4px 4px 4px rgb(227, 105, 151);  
box-shadow:4px 4px 4px 4px rgb(227, 105,  
151) }
```

Background

The CSS property to change the background color of an element to YIQ 146.7220, 57.9460, 40.1700 is called "background". The background property can be set on classes, ids or directly on the HTML element.

```
.background, #background, body{  
background: rgb(227, 105, 151) }
```

If only the background color should be changed can be used:

```
.background{ background-color: rgb(227,  
105, 151) }
```

This example shows the color as background, it is applied via the CSS property "background".

To optimize and compress your CSS code, you can use our [online CSS compressor and optimizer](#) based on csstidy. If you want to create a linear or radial gradient as background or border, check our [CSS Gradient Generator](#).

Hey! You found this booklet interesting? Support Converting Colors with the new Membership Option!

The pro membership hides all ads, plus gives you double the colors in the color bucket, and more awesome pro features!

[Learn more, Memberships starting at \\$2.50/m!](#)

**Follow me
on Twitter!**

@ConvertingColor