

# Converting Colors

YIQ(147.3210, 47.0880, -5.3600)

Have a look what the booklet for  
YIQ(147.3210, 47.0880, -5.3600)  
contains.

<b>YIQ(147.3210, 47.0880, -5.3600)</b> .....	3
<b><i>Conversions</i></b> .....	4
<b><i>Details</i></b> .....	6
<b><i>Harmonies</i></b> .....	12
<b><i>Previews</i></b> .....	24
<b><i>Color Blindness Simulation</i></b> .....	28
<b><i>CSS Examples</i></b> .....	31

# Color

**YIQ(147.3210, 47.0880,  
-5.3600)**

# Conversions

## Conversions Part 1

<b>Format</b>	<b>Color</b>
Hex	BD8A56
RGB	189, 138, 86
RGB Percent	74%, 54%, 34%
CMY	0.2587, 0.4589, 0.6625
CMYK	0.00, 0.27, 0.54, 0.26
HSL	30°, 44%, 54%
HSV	30°, 54%, 74%
XYZ	31.7593, 29.6653, 12.8684
YIQ	147.3210, 47.0880, -5.3600

# Conversions

## Conversions Part 2

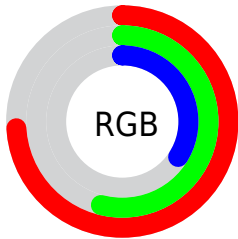
<b>Format</b>	<b>Color</b>
<b>R<sub>YB</sub></b>	187, 189, 86
Decimal	12421718
CIE <sub>Lab</sub>	61.36, 13.49, 35.24
CIE <sub>LCh</sub>	61, 37.733, 69.046
Yxy	29.6653, 0.4275, 0.3993
Android (android.graphics.Color)	4290611798 (0xFFBD8A56)
YUV	147.3210, -30.2313, 36.5525
Hunter-Lab	54.4659, 8.7690, 24.1179

# Details

The YIQ color **147.3210, 47.0880, -5.3600** is a dark color, and the websafe version is hex **CC9966**. A complement of this color would be **127.6790, -47.0880, 5.3600**, and the grayscale version is **148.0000, -0.0000, 0.0000**.

A 20% lighter version of the original color is **201.8870, 51.3060, -4.7100**, and **95.8690, 42.5490, -5.6990** is the 20% darker color. If you saturate the color by 10%, you get **139.8720, 55.6620, -6.5620**, and if you desaturate by 10%, it is **154.7700, 38.5140, -4.1580**.

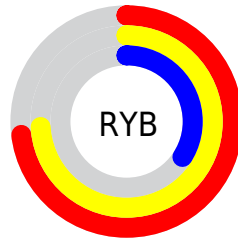
# Distribution



Red (74%)

Green (54%)

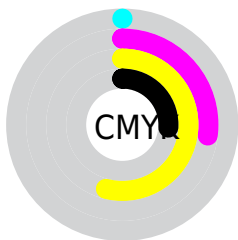
Blue (34%)



Red (73%)

Yellow (74%)

Blue (34%)

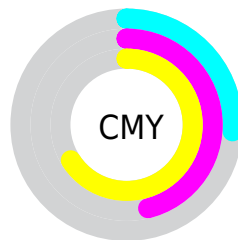


Cyan (0%)

Magenta (27%)

Yellow (54%)

Black (26%)



Cyan (26%)

Magenta (46%)

Yellow (66%)

# Brightness & Saturation Gradients

These gradients show how the YIQ color 147.3210, 47.0880, -5.3600 changes by changing the brightness by 10 percent. The first figure shows a shift by +10% for each color and the second figure -10%.

Similar to the brightness gradients but the following saturation gradients show a change of the YIQ color 147.3210, 47.0880, -5.3600 by changing the saturation by 10% instead.



■ 147.3210, 47.0880,  
-5.3600

■ 147.3210, 47.0880,  
-5.3600

■ 255.0000, -0.0000,  
-0.0000

■ 121.5380, 44.9790,  
-5.6850

■ 201.8870, 51.3060,  
-4.7100

■ 95.8690, 42.5490,  
-5.6990

■ 223.3800, 39.4320,  
-9.7840

■ 71.2600, 39.8900,  
-7.0700

■ 243.5950, 22.4690,  
-16.2430

■ 48.2750, 35.5340,  
-5.2180

■ 250.8960, 11.5560,  
-11.1960

■ 28.7610, 25.5380,  
-0.2700

■ 254.0880, 2.5680,  
-2.4880

■ 8.9700, 17.8800,  
6.3600

■ 0.0000, 0.0000,

0.0000

■ 147.3210, 47.0880,  
-5.3600

■ 147.3210, 47.0880,  
-5.3600

■ 139.8720, 55.6620,  
-6.5620

■ 154.7700, 38.5140,  
-4.1580

■ 131.8360, 64.5110,  
-7.2410

■ 162.8060, 29.6650,  
-3.4790

■ 124.3870, 73.0850,  
-8.4430

■ 170.2550, 21.0910,  
-2.2770

■ 116.9380, 81.6590,  
-9.6450

■ 177.7040, 12.5170,  
-1.0750

■ 112.2760, 86.5190,  
-9.6170

■ 185.7400, 3.6680,  
-0.3960

■ 193.0750, -4.5850,  
0.4950

■ 201.1110,  
-13.4340, 1.1740

■ 208.5600,  
-22.0080, 2.3760

■ 215.8950,  
-30.2610, 3.2670

# Harmonies

## Analogous

The Analogous color harmony consists of three colors that are next to each other on the color wheel.



149.0530, 54.3750, 11.2630



147.3210, 47.0880, -5.3600



144.5370, 28.3840, -18.8160

# Triad

The Triadic color harmony groups three colors that are evenly spaced from another and form a triangle on the color wheel.



147.3210, 47.0880, -5.3600



116.2370, -94.2590, -37.3550



151.9670, -3.2600, 26.0520

# Complementary

The Complementary color scheme is a pair of colors which are on the opposite of each other on the color wheel.



147.3210, 47.0880, -5.3600



127.6790, -47.0880, 5.3600

# Split Complementary

Split-complementary colors differ from the complementary color scheme. The scheme consists of three colors, the original color and two neighbors of the complement color.



145.6570, -40.8540, 13.5300



147.3210, 47.0880, -5.3600



117.8140, -105.7690, -26.9930

# Square

The Square scheme is like the rectangle color scheme, but the four colors are evenly spaced on the color wheel.



147.3210, 47.0880, -5.3600



134.2100, -36.9030, -30.5590



130.1410, -84.0400, -7.7840



152.2990, 28.1000, 30.4040



# Rectangle

The Rectangle color scheme consists of four colors that form a rectangle on the color wheel.



147.3210, 47.0880, -5.3600



142.2680, 9.9080, -25.3880



130.1410, -84.0400, -7.7840



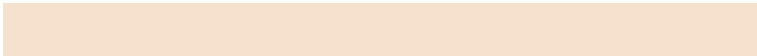
150.5140, -15.2260, 22.6460

# Sweetspot

The Sweet Spot groups the original color and five complimentary colors.



147.3210, 47.0880, -5.3600



228.8140, 18.0190, -1.6690



122.7250, 44.6960, 38.0080



112.9210, 10.4080, -1.4000



250.0000, 0.0000, 0.0000



122.0000, 0.0000, -0.0000



# Same Dimension

The Same Dimension uses a secret algorithm to generate beautiful new colors.



147.3210, 47.0880, -5.3600



180.5010, 72.7640, -8.1320



177.2580, 33.0630, -32.0330



90.6260, 3.9890, -0.7070



94.2020, 72.1680, -8.3440



18.0740, 14.3510, -1.2730



# Inverse Universe

The Inverse Universe completely reimagines the original color for something new.



127.6790, -47.0880, 5.3600



150.4990, -72.7640, 8.1320



97.7420, -33.0630, 32.0330



88.9610, -4.2640, 0.1840



63.7980, -72.1680, 8.3440

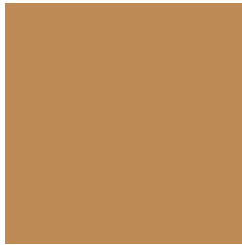


12.3390, -14.0760, 1.7960



# Previews

## White Background



This preview shows how the YIQ color 147.3210, 47.0880, -5.3600 looks on a white background.

## Color Contrast Check

Large Text (above 18pt) WCAG AA ✓ Pass

Any Text WCAG AA × Fail

Large Text (above 18pt) WCAG AAA × Fail

Any Text WCAG AAA × Fail



# Black Background



This preview shows how the YIQ color 147.3210, 47.0880, -5.3600 looks on a black background.

## Color Contrast Check

Large Text (above 18pt) WCAG AA ✓ Pass

Any Text WCAG AA ✓ Pass

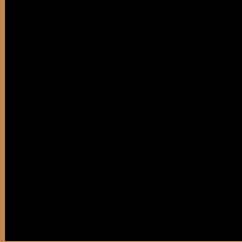
Large Text (above 18pt) WCAG AAA ✓ Pass

Any Text WCAG AAA × Fail

If you want to check with other color combinations, try the [Color Contrast Checker](#).

# YIQ 147.3210, 47.0880, -5.3600

## Background



This preview shows how black text looks on a background with the YIQ color 147.3210, 47.0880, -5.3600.



This preview shows how white text looks on a background with the YIQ color 147.3210, 47.0880, -5.3600.

-5.3600.

# Color Blindness Simulation

Color vision deficiency is a very complex topic, and I could not describe the different causes any better than Wikipedia does, so if you want to learn more, you should check out their [article about color blindness](#).

## Dichromacy



### Original Color

147.3210, 47.0880, -5.3600

### Protanopia

145.5740, 26.9620, -15.0700

### Deuteranopia

147.1630, 41.5410, -9.4590



## Tritanopia

150.9770, 34.3380, 16.4660

# Trichromacy



## Original Color

147.3210, 47.0880, -5.3600

## Protanomaly

146.1020, 34.3430, -11.1690

## Deuteranomaly

147.4730, 43.6040, -8.3000

## Tritanomaly

149.8600, 38.7410, 8.2530

# Monochromacy



## Original Color

147.3210, 47.0880, -5.3600

## Achromatopsia

147.0000, -0.0000, 0.0000

## Achromatomaly

147.2160, 16.8270, -2.0930

# CSS Examples

## Text

The CSS property to change the color of the text to YIQ 147.3210, 47.0880, -5.3600 is called "color". The color property can be set on classes, ids or directly on the HTML element.

This example shows how text in the color `rgb(189, 138, 86)` looks like.

```
.text, #text, p{  
    color:rgb(189, 138, 86)  
}
```

If you want to add a text shadow in that color use the text-shadow property, you can generate a text shadow directly with our [CSS Text Shadow Generator](#).

Here you see how black text with a 4 pixel rgb(189, 138, 86) colored shadow looks like.

```
.shadow{ text-shadow: 4px 4px 2px rgb(189, 138, 86) }
```

## Border

The CSS property to change the border of an element to YIQ 147.3210, 47.0880, -5.3600 is called "border". The border property can be set on classes, ids or directly on the HTML element.

This example shows the color as border, it can be applied via the CSS property "border" or "border-color".

```
.border, #border, table{ border:4px solid rgb(189, 138, 86) }
```



If only the border color should be changed use the property border-color.

```
.border{ border-color:rgb(189, 138, 86) }
```

If you want to add a box shadow in that color use:

Here you see how a box with a 4 pixel rgb(189, 138, 86) colored shadow looks like.

```
.boxshadow{ -moz-box-shadow:4px 4px 4px  
4px rgb(189, 138, 86); -webkit-box-  
shadow:4px 4px 4px 4px rgb(189, 138, 86);  
box-shadow:4px 4px 4px 4px rgb(189, 138,  
86) }
```

# Background

The CSS property to change the background color of an element to YIQ 147.3210, 47.0880, -5.3600 is called "background". The background property can be set on classes, ids or directly on the HTML element.

```
.background, #background, body{  
background: rgb(189, 138, 86) }
```

If only the background color should be changed can be used:

```
.background{ background-color: rgb(189,  
138, 86) }
```

This example shows the color as background, it is applied via the CSS property "background".

To optimize and compress your CSS code, you can use our [online CSS compressor and optimizer](#) based on csstidy. If you want to create a linear or radial gradient as background or border, check our [CSS Gradient Generator](#).

Hey! You found this booklet interesting? Support Converting Colors with the new Membership Option!

The pro membership hides all ads, plus gives you double the colors in the color bucket, and more awesome pro features!

**[Learn more, Memberships starting at \\$2.50/m!](#)**

**Follow me  
on Twitter!**

@ConvertingColor