

# Converting Colors

YIQ(147.3620, 39.8430, -0.7090)

Have a look what the booklet for  
YIQ(147.3620, 39.8430, -0.7090)  
contains.

<b>YIQ(147.3620, 39.8430, -0.7090)</b> .....	3
<b><i>Conversions</i></b> .....	4
<b><i>Details</i></b> .....	6
<b><i>Harmonies</i></b> .....	12
<b><i>Previews</i></b> .....	24
<b><i>Color Blindness Simulation</i></b> .....	28
<b><i>CSS Examples</i></b> .....	31

# Color

**YIQ(147.3620, 39.8430,  
-0.7090)**

# Conversions

## Conversions Part 1

<b>Format</b>	<b>Color</b>
Hex	<a href="#">B98966</a>
RGB	<a href="#">185, 137, 102</a>
RGB Percent	<a href="#">73%, 54%, 40%</a>
CMY	<a href="#">0.2744, 0.4628, 0.5998</a>
CMYK	<a href="#">0.00, 0.26, 0.45, 0.27</a>
HSL	<a href="#">25°, 37%, 56%</a>
HSV	<a href="#">25°, 45%, 73%</a>
XYZ	<a href="#">31.3567, 29.1630, 16.5590</a>
YIQ	<a href="#">147.3620, 39.8430, -0.7090</a>

# Conversions

## Conversions Part 2

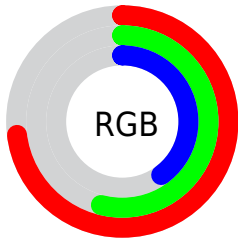
<b>Format</b>	<b>Color</b>
<b>R<sub>YB</sub></b>	185, 163, 102
Decimal	12159334
CIE <sub>Lab</sub>	60.93, 13.91, 25.87
CIE <sub>LCh</sub>	61, 29.379, 61.730
Yxy	29.1630, 0.4068, 0.3784
Android (android.graphics.Color)	4290349414 (0xFFB98966)
YUV	147.3620, -22.3635, 33.0085
Hunter-Lab	54.0028, 9.1409, 19.6217

# Details

The YIQ color **147.3620, 39.8430, -0.7090** is a dark color, and the websafe version is hex **CC9966**. A complement of this color would be **139.6380, -39.8430, 0.7090**, and the grayscale version is **148.0000, -0.0000, 0.0000**.

A 20% lighter version of the original color is **201.6290, 43.4650, -0.2710**, and **96.0950, 36.2210, -1.1470** is the 20% darker color. If you saturate the color by 10%, you get **138.8530, 48.6460, -0.5540**, and if you desaturate by 10%, it is **155.9850, 30.7190, -0.5530**.

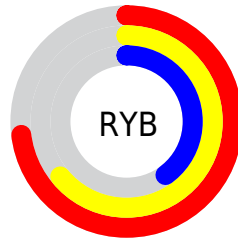
# Distribution



Red (73%)

Green (54%)

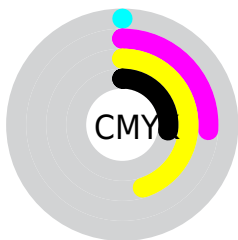
Blue (40%)



Red (73%)

Yellow (64%)

Blue (40%)

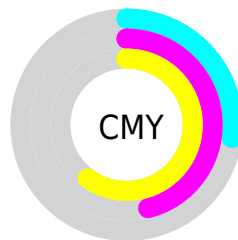


Cyan (0%)

Magenta (26%)

Yellow (45%)

Black (27%)



Cyan (27%)

Magenta (46%)


Yellow (60%)


# Brightness & Saturation Gradients

These gradients show how the YIQ color 147.3620, 39.8430, -0.7090 changes by changing the brightness by 10 percent. The first figure shows a shift by +10% for each color and the second figure -10%.


Similar to the brightness gradients but the following saturation gradients show a change of the YIQ color 147.3620, 39.8430, -0.7090 by changing the saturation by 10% instead.





 147.3620, 39.8430,  
-0.7090


 147.3620, 39.8430,  
-0.7090


255.0000, -0.0000,  
-0.0000


 121.5790, 37.7340,  
-1.0340


 201.6290, 43.4650,  
-0.2710

 96.2090, 35.9000,  
-0.8360


 224.7310, 34.2500,  
-3.9740


 72.0130, 33.5160,  
-1.6840

 244.9460, 17.2870,  
-10.4330

 48.2300, 31.4070,  
-2.0090

 252.8340, 6.0990,  
-5.9090

 27.8750, 25.2170,  
0.0410

 8.6710, 17.2840,  
6.1480

 0.0000, 0.0000,

0.0000

■ 147.3620, 39.8430,  
-0.7090

■ 147.3620, 39.8430,  
-0.7090

■ 138.8530, 48.6460,  
-0.5540

■ 155.9850, 30.7190,  
-0.5530

■ 130.8170, 57.4950,  
-1.2330

■ 163.9070, 22.1910,  
-0.1850

■ 122.3080, 66.2980,  
-1.0780

■ 172.5300, 13.0670,  
-0.0290

■ 113.6850, 75.4220,  
-1.2340

■ 181.0390, 4.2640,  
-0.1840

■ 105.1760, 84.2250,  
-1.0790

■ 189.6620, -4.8600,  
-0.0280

■ 101.1010, 88.8100,  
-1.5740

■ 197.5840,  
-13.3880, 0.3400

■ 206.2070,  
-22.5120, 0.4960

■ 214.7160,  
-31.3150, 0.3410

■ 221.1560,  
-35.6700, -3.3340

# Harmonies

## Analogous

The Analogous color harmony consists of three colors that are next to each other on the color wheel.



149.0070, 42.8210, 11.4050



147.3620, 39.8430, -0.7090



145.2690, 26.5030, -12.2570

# Triad

The Triadic color harmony groups three colors that are evenly spaced from another and form a triangle on the color wheel.



147.3620, 39.8430, -0.7090



133.8040, -47.0830, -22.2750



149.4020, -9.2190, 18.4050

# Complementary

The Complementary color scheme is a pair of colors which are on the opposite of each other on the color wheel.



147.3620, 39.8430, -0.7090



139.6380, -39.8430, 0.7090

# Split Complementary

Split-complementary colors differ from the complementary color scheme. The scheme consists of three colors, the original color and two neighbors of the complement color.



144.1210, -36.5890, 7.8190



147.3620, 39.8430, -0.7090



130.6850, -65.5610, -17.7930

# Square

The Square scheme is like the rectangle color scheme, but the four colors are evenly spaced on the color wheel.



147.3620, 39.8430, -0.7090



138.6360, -20.3070, -22.9550



135.8850, -59.8320, -5.9760



150.6240, 16.6390, 23.3510



# Rectangle

The Rectangle color scheme consists of four colors that form a rectangle on the color wheel.



147.3620, 39.8430, -0.7090



143.1640, 13.4370, -17.7550



135.8850, -59.8320, -5.9760



148.0310, -18.4800, 15.5360

# Sweetspot

The Sweet Spot groups the original color and five complimentary colors.



147.3620, 39.8430, -0.7090



225.9000, 14.9010, -0.2270



132.2890, 34.0600, 32.5240



111.3770, 9.1240, -0.1560



247.0000, -0.0000, -0.0000



120.0000, -0.0000, -0.0000



# Same Dimension

The Same Dimension uses a secret algorithm to generate beautiful new colors.



147.3620, 39.8430, -0.7090



181.1550, 62.3550, -1.2050



171.4290, 28.5680, -22.1520



87.4520, 4.5390, 0.3390



84.7990, 75.1010, -0.9230



15.4160, 13.3880, -0.3400



# Inverse Universe

The Inverse Universe completely reimagines the original color for something new.



139.6380, -39.8430, 0.7090



168.8450, -62.3550, 1.2050



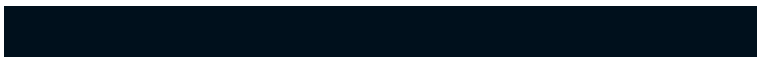
115.5710, -28.5680, 22.1520



86.9610, -4.2640, 0.1840



70.6140, -74.8260, 1.4460

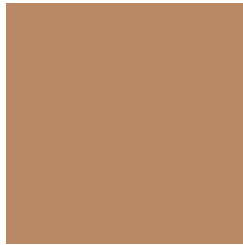


12.5840, -13.3880, 0.3400



# Previews

## White Background



This preview shows how the YIQ color 147.3620, 39.8430, -0.7090 looks on a white background.

## Color Contrast Check

Large Text (above 18pt) WCAG AA ✓ Pass

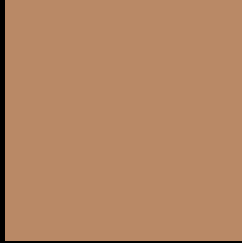
Any Text WCAG AA × Fail

Large Text (above 18pt) WCAG AAA × Fail

Any Text WCAG AAA × Fail



# Black Background



This preview shows how the YIQ color 147.3620, 39.8430, -0.7090 looks on a black background.

## Color Contrast Check

Large Text (above 18pt) WCAG AA ✓ Pass

Any Text WCAG AA ✓ Pass

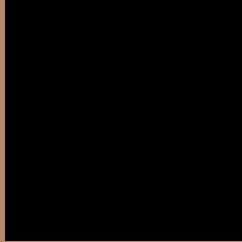
Large Text (above 18pt) WCAG AAA ✓ Pass

Any Text WCAG AAA × Fail

If you want to check with other color combinations, try the [Color Contrast Checker](#).

**YIQ 147.3620, 39.8430, -0.7090**

## **Background**



This preview shows how black text looks on a background with the YIQ color 147.3620, 39.8430, -0.7090.



This preview shows how white text looks on a background with the YIQ color 147.3620, 39.8430,

-0.7090.

# Color Blindness Simulation

Color vision deficiency is a very complex topic, and I could not describe the different causes any better than Wikipedia does, so if you want to learn more, you should check out their [article about color blindness](#).

## Dichromacy



### Original Color

147.3620, 39.8430, -0.7090

### Protanopia

145.6150, 19.7170, -10.4190

### Deuteranopia

146.9050, 33.7000, -5.0200



## Tritanopia

150.1830, 30.7620, 15.1940

# Trichromacy



## Original Color

147.3620, 39.8430, -0.7090

## Protanomaly

146.1430, 27.0980, -6.5180

## Deuteranomaly

147.2150, 35.7630, -3.8610

## Tritanomaly

149.3480, 34.4310, 9.2710

# Monochromacy



## Original Color

147.3620, 39.8430, -0.7090

## Achromatopsia

147.0000, -0.0000, 0.0000

## Achromatomaly

147.0140, 14.5800, 0.0840

# CSS Examples

## Text

The CSS property to change the color of the text to YIQ 147.3620, 39.8430, -0.7090 is called "color". The color property can be set on classes, ids or directly on the HTML element.

This example shows how text in the color `rgb(185, 137, 102)` looks like.

```
.text, #text, p{  
    color:rgb(185, 137, 102)  
}
```

If you want to add a text shadow in that color use the text-shadow property, you can generate a text shadow directly with our [CSS Text Shadow Generator](#).

Here you see how black text with a 4 pixel rgb(185, 137, 102) colored shadow looks like.

```
.shadow{ text-shadow: 4px 4px 2px rgb(185, 137, 102) }
```

## Border

The CSS property to change the border of an element to YIQ 147.3620, 39.8430, -0.7090 is called "border". The border property can be set on classes, ids or directly on the HTML element.

This example shows the color as border, it can be applied via the CSS property "border" or "border-color".

```
.border, #border, table{ border:4px solid rgb(185, 137, 102) }
```



If only the border color should be changed use the property border-color.

```
.border{ border-color:rgb(185, 137, 102) }
```

If you want to add a box shadow in that color use:

Here you see how a box with a 4 pixel rgb(185, 137, 102) colored shadow looks like.

```
.boxshadow{ -moz-box-shadow:4px 4px 4px  
4px rgb(185, 137, 102); -webkit-box-  
shadow:4px 4px 4px 4px rgb(185, 137, 102);  
box-shadow:4px 4px 4px 4px rgb(185, 137,  
102) }
```

# Background

The CSS property to change the background color of an element to YIQ 147.3620, 39.8430, -0.7090 is called "background". The background property can be set on classes, ids or directly on the HTML element.

```
.background, #background, body{  
background: rgb(185, 137, 102) }
```

If only the background color should be changed can be used:

```
.background{ background-color: rgb(185,  
137, 102) }
```

This example shows the color as background, it is applied via the CSS property "background".

To optimize and compress your CSS code, you can use our [online CSS compressor and optimizer](#) based on csstidy. If you want to create a linear or radial gradient as background or border, check our [CSS Gradient Generator](#).

Hey! You found this booklet interesting? Support Converting Colors with the new Membership Option!

The pro membership hides all ads, plus gives you double the colors in the color bucket, and more awesome pro features!

**[Learn more, Memberships starting at \\$2.50/m!](#)**

**Follow me  
on Twitter!**

@ConvertingColor