

Converting Colors

YIQ(147.5760, 24.6210, -0.1710)

Have a look what the booklet for
YIQ(147.5760, 24.6210, -0.1710)
contains.

YIQ(147.5760, 24.6210, -0.1710)	3
<i>Conversions</i>	4
<i>Details</i>	6
<i>Harmonies</i>	12
<i>Previews</i>	24
<i>Color Blindness Simulation</i>	28
<i>CSS Examples</i>	31

Color

**YIQ(147.5760, 24.6210,
-0.1710)**

Conversions

Conversions Part 1

Format	Color
Hex	AB8D78
RGB	171, 141, 120
RGB Percent	67%, 55%, 47%
CMY	0.3294, 0.4471, 0.5293
CMYK	0.00, 0.18, 0.30, 0.33
HSL	25°, 23%, 57%
HSV	25°, 30%, 67%
XYZ	29.7128, 29.0624, 21.8221
YIQ	147.5760, 24.6210, -0.1710

Conversions

Conversions Part 2

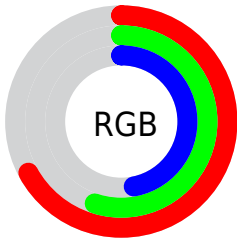
Format	Color
R_{YB}	171, 156, 120
Decimal	11242872
CIE Lab	60.84, 8.15, 15.43
CIE LCh	61, 17.454, 62.165
Yxy	29.0624, 0.3687, 0.3606
Android (android.graphics.Color)	4289432952 (0xFFAB8D78)
YUV	147.5760, -13.5950, 20.5428
Hunter-Lab	53.9095, 4.0403, 13.7366

Details

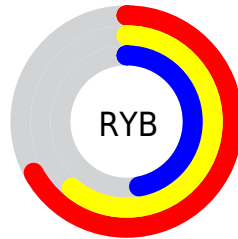
The YIQ color $147.5760, 24.6210, -0.1710$ is a dark color, and the websafe version is hex $CC9999$. A complement of this color would be $143.4240, -24.6210, 0.1710$, and the grayscale version is $148.0000, -0.0000, 0.0000$.

A 20% lighter version of the original color is $201.9460, 26.4550, -0.3690$, and $96.7930, 22.5120, -0.4960$ is the 20% darker color. If you saturate the color by 10%, you get $139.7680, 32.8280, -0.2280$, and if you desaturate by 10%, it is $155.3840, 16.4140, -0.1140$.

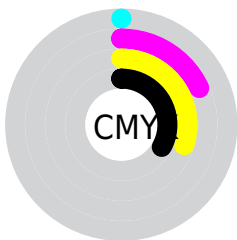
Distribution



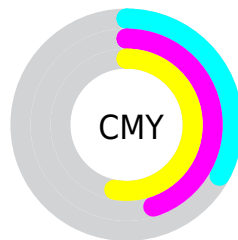
- Red (67%)
- Green (55%)
- Blue (47%)



- Red (67%)
- Yellow (61%)
- Blue (47%)



- Cyan (0%)
- Magenta (18%)
- Yellow (30%)
- Black (33%)





- Cyan (33%)
- Magenta (45%)
- Yellow (53%)

Brightness & Saturation Gradients


These gradients show how the YIQ color 147.5760, 24.6210, -0.1710 changes by changing the brightness by 10 percent. The first figure shows a shift by +10% for each color and the second figure -10%.


Similar to the brightness gradients but the following saturation gradients show a change of the YIQ color 147.5760, 24.6210, -0.1710 by changing the saturation by 10% instead.


 147.5760, 24.6210,
-0.1710


 147.5760, 24.6210,
-0.1710


255.0000, -0.0000,
-0.0000

 121.3910, 23.7040,
-0.0720


 201.9460, 26.4550,
-0.3690


 96.7930, 22.5120,
-0.4960


 229.9460, 26.4550,
-0.3690

 72.4230, 20.6780,
-0.2980

 249.5740, 9.7670,
-6.3050

 49.9390, 19.1650,
-0.4110

 27.7710, 19.5780,
-2.3900

 6.5780, 13.1120,
4.6640

 0.0000, 0.0000,

0.0000

■ 147.5760, 24.6210,
-0.1710

■ 147.5760, 24.6210,
-0.1710

■ 139.7680, 32.8280,
-0.2280

■ 155.3840, 16.4140,
-0.1140

■ 131.9600, 41.0350,
-0.2850

■ 163.1920, 8.2070,
-0.0570

■ 124.1520, 49.2420,
-0.3420

■ 171.0000, -0.0000,
-0.0000

■ 116.3440, 57.4490,
-0.3990

■ 178.8080, -8.2070,
0.0570

■ 108.5360, 65.6560,
-0.4560

■ 186.7300,
-16.7350, 0.4250

■ 100.6140, 74.1840,
-0.8240

■ 194.5380,
-24.9420, 0.4820

■ 92.2190, 82.6660,
-0.3580

■ 202.3460,
-33.1490, 0.5390

■ 210.5130,
-40.9890, -0.5490

■ 216.3830,
-43.7390, -5.7790

Harmonies

Analogous

The Analogous color harmony consists of three colors that are next to each other on the color wheel.



148.5750, 26.3620, 6.8260



147.5760, 24.6210, -0.1710



146.1680, 16.7820, -6.7860

Triad

The Triadic color harmony groups three colors that are evenly spaced from another and form a triangle on the color wheel.



147.5760, 24.6210, -0.1710



140.9210, -25.1230, -12.7630



148.2250, -4.5870, 11.5490

Complementary

The Complementary color scheme is a pair of colors which are on the opposite of each other on the color wheel.



147.5760, 24.6210, -0.1710



143.4240, -24.6210, 0.1710

Split Complementary

Split-complementary colors differ from the complementary color scheme. The scheme consists of three colors, the original color and two neighbors of the complement color.



146.2230, -19.4410, 5.4150



147.5760, 24.6210, -0.1710



140.9620, -32.3680, -8.1120

Square

The Square scheme is like the rectangle color scheme, but the four colors are evenly spaced on the color wheel.



147.5760, 24.6210, -0.1710



142.2230, -11.4140, -13.4140



142.7330, -29.9850, -1.7370



149.5920, 10.4970, 13.5130

Rectangle

The Rectangle color scheme consists of four colors that form a rectangle on the color wheel.



147.5760, 24.6210, -0.1710



144.5690, 8.1630, -10.2770



142.7330, -29.9850, -1.7370



147.5340, -9.9510, 9.6410

Sweetspot

The Sweet Spot groups the original color and five complimentary colors.



147.5760, 24.6210, -0.1710



212.6760, 9.7200, 0.0560



138.7830, 20.4450, 20.4530



106.5230, 5.7770, -0.0710



240.0000, -0.0000, -0.0000



112.0000, -0.0000, 0.0000

Same Dimension

The Same Dimension uses a secret algorithm to generate beautiful new colors.



147.5760, 24.6210, -0.1710



185.2910, 38.6050, -0.2990



162.2510, 17.7460, -13.2460



83.0390, 4.2640, -0.1840



81.2440, 72.3500, -0.6260



12.1600, 11.2330, 0.1690

Inverse Universe

The Inverse Universe completely reimagines the original color for something new.



143.4240, -24.6210, 0.1710



178.7090, -38.6050, 0.2990



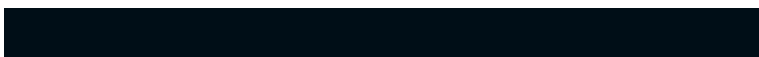
128.7490, -17.7460, 13.2460



81.9610, -4.2640, 0.1840



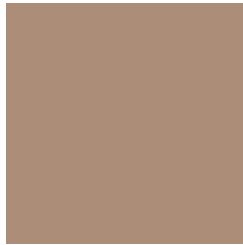
69.3430, -72.6250, 0.1030



10.8400, -11.2330, -0.1690

Previews

White Background



This preview shows how the YIQ color 147.5760, 24.6210, -0.1710 looks on a white background.

Color Contrast Check

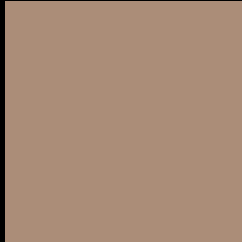
Large Text (above 18pt) WCAG AA ✓ Pass

Any Text WCAG AA × Fail

Large Text (above 18pt) WCAG AAA × Fail

Any Text WCAG AAA × Fail

Black Background



This preview shows how the YIQ color 147.5760, 24.6210, -0.1710 looks on a black background.

Color Contrast Check

Large Text (above 18pt) WCAG AA ✓ Pass

Any Text WCAG AA ✓ Pass

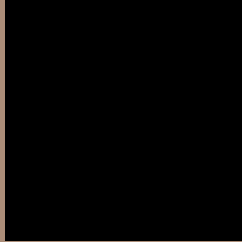
Large Text (above 18pt) WCAG AAA ✓ Pass

Any Text WCAG AAA × Fail

If you want to check with other color combinations, try the [Color Contrast Checker](#).

YIQ 147.5760, 24.6210, -0.1710

Background



This preview shows how black text looks on a background with the YIQ color 147.5760, 24.6210, -0.1710.



This preview shows how white text looks on a background with the YIQ color 147.5760, 24.6210, -0.1710.

-0.1710.

Color Blindness Simulation

Color vision deficiency is a very complex topic, and I could not describe the different causes any better than Wikipedia does, so if you want to learn more, you should check out their [article about color blindness](#).

Dichromacy



Original Color

147.5760, 24.6210, -0.1710

Protanopia

146.6560, 12.4720, -5.7680

Deuteranopia

147.2770, 24.0250, -0.3830



Tritanopia

149.3170, 18.5210, 11.2650

Trichromacy



Original Color

147.5760, 24.6210, -0.1710

Protanomaly

147.1620, 16.9190, -3.7610

Deuteranomaly

147.2770, 24.0250, -0.3830

Tritanomaly

148.4650, 20.8600, 7.4200

Monochromacy



Original Color

147.5760, 24.6210, -0.1710

Achromatopsia

148.0000, -0.0000, 0.0000

Achromatomaly

147.4910, 8.8030, 0.1550

CSS Examples

Text

The CSS property to change the color of the text to YIQ 147.5760, 24.6210, -0.1710 is called "color". The color property can be set on classes, ids or directly on the HTML element.

This example shows how text in the color `rgb(171, 141, 120)` looks like.

```
.text, #text, p{  
    color:rgb(171, 141, 120)  
}
```

If you want to add a text shadow in that color use the text-shadow property, you can generate a text shadow directly with our [CSS Text Shadow Generator](#).

Here you see how black text with a 4 pixel rgb(171, 141, 120) colored shadow looks like.

```
.shadow{ text-shadow: 4px 4px 2px rgb(171, 141, 120) }
```

Border

The CSS property to change the border of an element to YIQ 147.5760, 24.6210, -0.1710 is called "border". The border property can be set on classes, ids or directly on the HTML element.

This example shows the color as border, it can be applied via the CSS property "border" or "border-color".

```
.border, #border, table{ border:4px solid rgb(171, 141, 120) }
```


If only the border color should be changed use the property `border-color`.

```
.border{ border-color:rgb(171, 141, 120) }
```

If you want to add a box shadow in that color use:

Here you see how a box with a 4 pixel `rgb(171, 141, 120)` colored shadow looks like.

```
.boxshadow{ -moz-box-shadow:4px 4px 4px 4px rgb(171, 141, 120); -webkit-box-shadow:4px 4px 4px 4px rgb(171, 141, 120); box-shadow:4px 4px 4px 4px rgb(171, 141, 120) }
```

Background

The CSS property to change the background color of an element to YIQ 147.5760, 24.6210, -0.1710 is called "background". The background property can be set on classes, ids or directly on the HTML element.

```
.background, #background, body{  
background: rgb(171, 141, 120) }
```

If only the background color should be changed can be used:

```
.background{ background-color: rgb(171,  
141, 120) }
```

This example shows the color as background, it is applied via the CSS property "background".

To optimize and compress your CSS code, you can use our [online CSS compressor and optimizer](#) based on csstidy. If you want to create a linear or radial gradient as background or border, check our [CSS Gradient Generator](#).

Hey! You found this booklet interesting? Support Converting Colors with the new Membership Option!

The pro membership hides all ads, plus gives you double the colors in the color bucket, and more awesome pro features!

[Learn more, Memberships starting at \\$2.50/m!](#)

**Follow me
on Twitter!**

@ConvertingColor