

Converting Colors

YIQ(148.2650, 41.4940, -3.0980)

Have a look what the booklet for
YIQ(148.2650, 41.4940, -3.0980)
contains.

YIQ(148.2650, 41.4940, -3.0980)	3
<i>Conversions</i>	4
<i>Details</i>	6
<i>Harmonies</i>	12
<i>Previews</i>	24
<i>Color Blindness Simulation</i>	28
<i>CSS Examples</i>	31

Color

**YIQ(148.2650, 41.4940,
-3.0980)**

Conversions

Conversions Part 1

Format	Color
Hex	BA8B61
RGB	186, 139, 97
RGB Percent	73%, 55%, 38%
CMY	0.2705, 0.4550, 0.6194
CMYK	0.00, 0.25, 0.48, 0.27
HSL	28°, 39%, 56%
HSV	28°, 48%, 73%
XYZ	31.6448, 29.7653, 15.3990
YIQ	148.2650, 41.4940, -3.0980

Conversions

Conversions Part 2

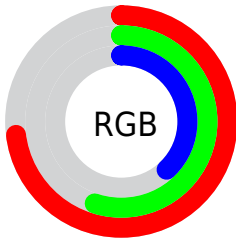
Format	Color
R_{YB}	186, 177, 97
Decimal	12225377
CIE _{Lab}	61.45, 12.70, 29.34
CIE _{LCh}	61, 31.967, 66.587
Yxy	29.7653, 0.4120, 0.3875
Android (android.graphics.Color)	4290415457 (0xFFBA8B61)
YUV	148.2650, -25.2736, 33.0936
Hunter-Lab	54.5576, 8.0586, 21.4556

Details

The YIQ color **148.2650, 41.4940, -3.0980** is a dark color, and the websafe version is hex **CC9966**. A complement of this color would be **134.7350, -41.4940, 3.0980**, and the grayscale version is **148.0000, -0.0000, 0.0000**.

A 20% lighter version of the original color is **203.1190, 44.8410, -3.1830**, and **96.8130, 36.9550, -3.4370** is the 20% darker color. If you saturate the color by 10%, you get **140.2290, 50.3430, -3.7770**, and if you desaturate by 10%, it is **156.3010, 32.6450, -2.4190**.

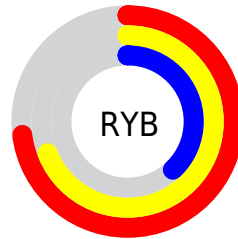
Distribution



Red (73%)

Green (55%)

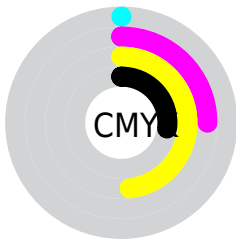
Blue (38%)



Red (73%)

Yellow (69%)

Blue (38%)

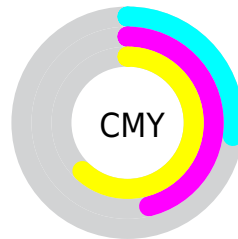


Cyan (0%)

Magenta (25%)

Yellow (48%)

Black (27%)



Cyan (27%)


Magenta (46%)


Yellow (62%)

Brightness & Saturation Gradients


These gradients show how the YIQ color 148.2650, 41.4940, -3.0980 changes by changing the brightness by 10 percent. The first figure shows a shift by +10% for each color and the second figure -10%.


Similar to the brightness gradients but the following saturation gradients show a change of the YIQ color 148.2650, 41.4940, -3.0980 by changing the saturation by 10% instead.


 148.2650, 41.4940,
-3.0980


 148.2650, 41.4940,
-3.0980


255.0000, -0.0000,
-0.0000

 121.8950, 39.6600,
-2.9000


 202.5320, 45.1160,
-2.6600


 96.8130, 36.9550,
-3.4370


 225.3350, 35.3050,
-6.5750


 72.9160, 35.1670,
-4.0730

 245.5500, 18.3420,
-13.0340

 48.9050, 33.7000,
-5.0200

 252.2640, 7.7040,
-7.4640

 28.7610, 25.5380,
-0.2700

 8.6710, 17.2840,
6.1480

 0.0000, 0.0000,

0.0000

■ 148.2650, 41.4940,
-3.0980

■ 148.2650, 41.4940,
-3.0980

■ 140.2290, 50.3430,
-3.7770

■ 156.3010, 32.6450,
-2.4190

■ 132.3070, 58.8710,
-4.1450

■ 164.2230, 24.1170,
-2.0510

■ 124.2710, 67.7200,
-4.8240

■ 171.6720, 15.5430,
-0.8490

■ 116.9360, 75.9730,
-5.7150

■ 179.5940, 7.0150,
-0.4810

■ 108.9000, 84.8220,
-6.3940

■ 187.6300, -1.8340,
0.1980

■ 107.2700, 86.6560,
-6.5920

■ 195.6660,
-10.6830, 0.8770

■ 203.5880,
-19.2110, 1.2450

■ 211.6240,
-28.0600, 1.9240

■ 217.9330,
-33.4240, 0.0160

Harmonies

Analogous

The Analogous color harmony consists of three colors that are next to each other on the color wheel.



149.6330, 46.8100, 10.6980



148.2650, 41.4940, -3.0980



146.0900, 25.4490, -15.1830

Triad

The Triadic color harmony groups three colors that are evenly spaced from another and form a triangle on the color wheel.



148.2650, 41.4940, -3.0980



132.0630, -58.1780, -24.9460



151.5490, -5.1390, 21.5570

Complementary

The Complementary color scheme is a pair of colors which are on the opposite of each other on the color wheel.



148.2650, 41.4940, -3.0980



134.7350, -41.4940, 3.0980

Split Complementary

Split-complementary colors differ from the complementary color scheme. The scheme consists of three colors, the original color and two neighbors of the complement color.



146.3000, -35.5350, 10.7450



148.2650, 41.4940, -3.0980



127.9870, -78.2150, -19.7430

Square

The Square scheme is like the rectangle color scheme, but the four colors are evenly spaced on the color wheel.



148.2650, 41.4940, -3.0980



138.3470, -26.8630, -25.2870



136.4870, -64.4630, -4.6470



152.3150, 22.0030, 25.2590

Rectangle

The Rectangle color scheme consists of four colors that form a rectangle on the color wheel.



148.2650, 41.4940, -3.0980



143.6150, 10.5490, -20.4830



136.4870, -64.4630, -4.6470



149.9930, -15.3170, 18.7870

Sweetspot

The Sweet Spot groups the original color and five complimentary colors.



148.2650, 41.4940, -3.0980



227.5580, 15.8640, -1.1600



129.0830, 37.6360, 33.7960



113.2630, 9.4450, -0.4670



250.0000, 0.0000, 0.0000



122.0000, 0.0000, -0.0000

Same Dimension

The Same Dimension uses a secret algorithm to generate beautiful new colors.



148.2650, 41.4940, -3.0980



183.4170, 64.3730, -4.7390



174.0930, 29.3940, -26.1100



88.0390, 4.2640, -0.1840



89.4950, 72.9010, -5.1070



16.0030, 13.1130, -0.8630

Inverse Universe

The Inverse Universe completely reimagines the original color for something new.



134.7350, -41.4940, 3.0980



162.5830, -64.3730, 4.7390



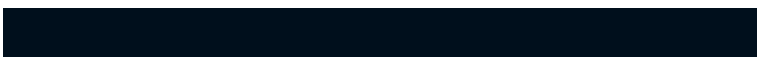
108.9070, -29.3940, 26.1100



86.3740, -3.9890, 0.7070



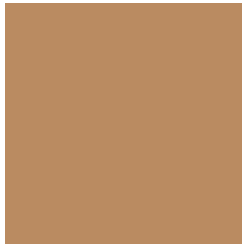
65.9180, -72.6260, 5.6300



11.9970, -13.1130, 0.8630

Previews

White Background



This preview shows how the YIQ color 148.2650, 41.4940, -3.0980 looks on a white background.

Color Contrast Check

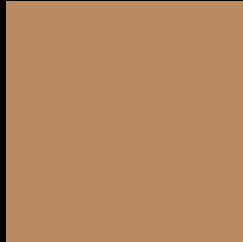
Large Text (above 18pt) WCAG AA ✓ Pass

Any Text WCAG AA × Fail

Large Text (above 18pt) WCAG AAA × Fail

Any Text WCAG AAA × Fail

Black Background



This preview shows how the YIQ color 148.2650, 41.4940, -3.0980 looks on a black background.

Color Contrast Check

Large Text (above 18pt) WCAG AA ✓ Pass

Any Text WCAG AA ✓ Pass

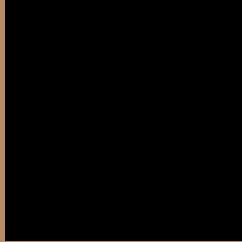
Large Text (above 18pt) WCAG AAA ✓ Pass

Any Text WCAG AAA × Fail

If you want to check with other color combinations, try the [Color Contrast Checker](#).

YIQ 148.2650, 41.4940, -3.0980

Background



This preview shows how black text looks on a background with the YIQ color 148.2650, 41.4940, -3.0980.



This preview shows how white text looks on a background with the YIQ color 148.2650, 41.4940,

-3.0980.

Color Blindness Simulation

Color vision deficiency is a very complex topic, and I could not describe the different causes any better than Wikipedia does, so if you want to learn more, you should check out their [article about color blindness](#).

Dichromacy



Original Color

148.2650, 41.4940, -3.0980

Protanopia

147.1160, 22.5600, -12.3840

Deuteranopia

147.8190, 36.8180, -6.4620



Tritanopia

151.1830, 30.7620, 15.1940

Trichromacy



Original Color

148.2650, 41.4940, -3.0980

Protanomaly

147.3450, 29.3450, -8.6950

Deuteranomaly

148.1290, 38.8810, -5.3030

Tritanomaly

150.1200, 35.0730, 8.6490

Monochromacy



Original Color

148.2650, 41.4940, -3.0980

Achromatopsia

148.0000, -0.0000, 0.0000

Achromatomaly

148.2590, 15.2680, -1.3720

CSS Examples

Text

The CSS property to change the color of the text to YIQ 148.2650, 41.4940, -3.0980 is called "color". The color property can be set on classes, ids or directly on the HTML element.

This example shows how text in the color `rgb(186, 139, 97)` looks like.

```
.text, #text, p{  
    color:rgb(186, 139, 97)  
}
```

If you want to add a text shadow in that color use the text-shadow property, you can generate a text shadow directly with our [CSS Text Shadow Generator](#).

Here you see how black text with a 4 pixel rgb(186, 139, 97) colored shadow looks like.

```
.shadow{ text-shadow: 4px 4px 2px rgb(186, 139, 97) }
```

Border

The CSS property to change the border of an element to YIQ 148.2650, 41.4940, -3.0980 is called "border". The border property can be set on classes, ids or directly on the HTML element.

This example shows the color as border, it can be applied via the CSS property "border" or "border-color".

```
.border, #border, table{ border:4px solid rgb(186, 139, 97) }
```


If only the border color should be changed use the property `border-color`.

```
.border{ border-color:rgb(186, 139, 97) }
```

If you want to add a box shadow in that color use:

Here you see how a box with a 4 pixel `rgb(186, 139, 97)` colored shadow looks like.

```
.boxshadow{ -moz-box-shadow:4px 4px 4px  
4px rgb(186, 139, 97); -webkit-box-  
shadow:4px 4px 4px 4px rgb(186, 139, 97);  
box-shadow:4px 4px 4px 4px rgb(186, 139,  
97) }
```

Background

The CSS property to change the background color of an element to YIQ 148.2650, 41.4940, -3.0980 is called "background". The background property can be set on classes, ids or directly on the HTML element.

```
.background, #background, body{  
background: rgb(186, 139, 97) }
```

If only the background color should be changed can be used:

```
.background{ background-color: rgb(186,  
139, 97) }
```

This example shows the color as background, it is applied via the CSS property "background".

To optimize and compress your CSS code, you can use our [online CSS compressor and optimizer](#) based on csstidy. If you want to create a linear or radial gradient as background or border, check our [CSS Gradient Generator](#).

Hey! You found this booklet interesting? Support Converting Colors with the new Membership Option!

The pro membership hides all ads, plus gives you double the colors in the color bucket, and more awesome pro features!

[Learn more, Memberships starting at \\$2.50/m!](#)

**Follow me
on Twitter!**

@ConvertingColor