

Converting Colors

YIQ(148.6880, 35.8090, -4.6950)

Have a look what the booklet for
YIQ(148.6880, 35.8090, -4.6950)
contains.

YIQ(148.6880, 35.8090, -4.6950)	3
<i>Conversions</i>	4
<i>Details</i>	6
<i>Harmonies</i>	12
<i>Previews</i>	24
<i>Color Blindness Simulation</i>	28
<i>CSS Examples</i>	31

Color

**YIQ(148.6880, 35.8090,
-4.6950)**

Conversions

Conversions Part 1

Format	Color
Hex	B48E65
RGB	180, 142, 101
RGB Percent	71%, 56%, 40%
CMY	0.2941, 0.4432, 0.6037
CMYK	0.00, 0.21, 0.44, 0.29
HSL	31°, 34%, 55%
HSV	31°, 44%, 71%
XYZ	30.8480, 29.9870, 16.4855
YIQ	148.6880, 35.8090, -4.6950

Conversions

Conversions Part 2

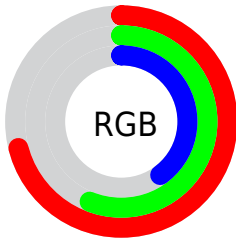
Format	Color
RYB	174, 180, 101
Decimal	11832933
CIELab	61.64, 8.94, 27.27
CIELCh	62, 28.699, 71.845
Yxy	29.9870, 0.3990, 0.3878
Android (android.graphics.Color)	4290023013 (0xFFB48E65)
YUV	148.6880, -23.5102, 27.4606
Hunter-Lab	54.7603, 4.7233, 20.4831

Details

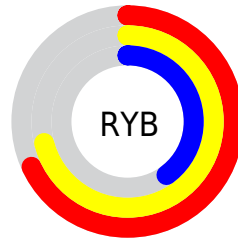
The YIQ color **148.6880, 35.8090, -4.6950** is a dark color, and the websafe version is hex **CC9966**. A complement of this color would be **132.3120, -35.8090, 4.6950**, and the grayscale version is **149.0000, 0.0000, -0.0000**.

A 20% lighter version of the original color is **203.2430, 38.5600, -4.9920**, and **97.4210, 32.1870, -5.1330** is the 20% darker color. If you saturate the color by 10%, you get **141.3530, 44.0620, -5.5860**, and if you desaturate by 10%, it is **156.0230, 27.5560, -3.8040**.

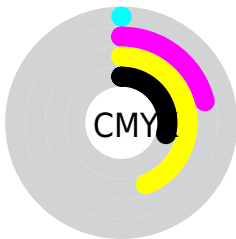
Distribution



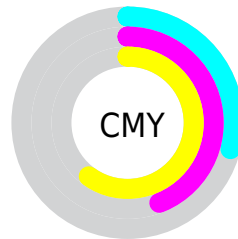
- Red (71%)
- Green (56%)
- Blue (40%)



- Red (68%)
- Yellow (71%)
- Blue (40%)



- Cyan (0%)
- Magenta (21%)
- Yellow (44%)
- Black (29%)



- Cyan (29%)
- Magenta (44%)
- Yellow (60%)

Brightness & Saturation Gradients

These gradients show how the YIQ color 148.6880, 35.8090, -4.6950 changes by changing the brightness by 10 percent. The first figure shows a shift by +10% for each color and the second figure -10%.

Similar to the brightness gradients but the following saturation gradients show a change of the YIQ color 148.6880, 35.8090, -4.6950 by changing the saturation by 10% instead.

■ 148.6880, 35.8090,
-4.6950

■ 148.6880, 35.8090,
-4.6950

■ 255.0000, -0.0000,
-0.0000

■ 122.3180, 33.9750,
-4.4970

■ 203.2430, 38.5600,
-4.9920

■ 97.4210, 32.1870,
-5.1330

■ 228.1390, 32.9210,
-7.4230

■ 73.0510, 30.3530,
-4.9350

■ 247.7670, 16.2330,
-13.3590

■ 50.0400, 28.8860,
-5.8820

■ 252.7200, 6.4200,
-6.2200

■ 29.3260, 22.3290,
-2.6870

■ 7.4750, 14.9000,
5.3000

■ 0.0000, 0.0000,

0.0000

■ 148.6880, 35.8090,
-4.6950

■ 148.6880, 35.8090,
-4.6950

■ 141.3530, 44.0620,
-5.5860

■ 156.0230, 27.5560,
-3.8040

■ 134.6050, 52.0400,
-7.0000

■ 162.7710, 19.5780,
-2.3900

■ 127.2700, 60.2930,
-7.8910

■ 170.1060, 11.3250,
-1.4990

■ 119.9350, 68.5460,
-8.7820

■ 177.4410, 3.0720,
-0.6080

■ 113.1870, 76.5240,
-10.1960

■ 184.1890, -4.9060,
0.8060

■ 108.4110, 81.7050,
-10.4790

■ 191.5240,
-13.1590, 1.6970

■ 198.8590,
-21.4120, 2.5880

■ 205.6070,
-29.3900, 4.0020

■ 212.0300,
-35.0750, 2.4050

Harmonies

Analogous

The Analogous color harmony consists of three colors that are next to each other on the color wheel.



150.1870, 42.1340, 7.3340



148.6880, 35.8090, -4.6950



146.5670, 19.6720, -15.1120

Triad

The Triadic color harmony groups three colors that are evenly spaced from another and form a triangle on the color wheel.



148.6880, 35.8090, -4.6950



134.9220, -53.2270, -21.0590



152.2460, 0.0880, 20.4400

Complementary

The Complementary color scheme is a pair of colors which are on the opposite of each other on the color wheel.



148.6880, 35.8090, -4.6950



132.3120, -35.8090, 4.6950

Split Complementary

Split-complementary colors differ from the complementary color scheme. The scheme consists of three colors, the original color and two neighbors of the complement color.



148.3180, -26.7780, 11.7340



148.6880, 35.8090, -4.6950



134.6900, -63.9570, -13.8210

Square

The Square scheme is like the rectangle color scheme, but the four colors are evenly spaced on the color wheel.



148.6880, 35.8090, -4.6950



139.4440, -28.5140, -22.8980



141.5380, -51.3050, -0.8170



152.8050, 23.3790, 22.3470

Rectangle

The Rectangle color scheme consists of four colors that form a rectangle on the color wheel.



148.6880, 35.8090, -4.6950



144.2170, 5.9180, -19.1540



141.5380, -51.3050, -0.8170



151.2880, -8.8980, 18.0940

Sweetspot

The Sweet Spot groups the original color and five complimentary colors.



148.6880, 35.8090, -4.6950



222.6610, 14.0760, -1.7960



128.9530, 34.8860, 28.5660



109.6650, 8.2530, -0.8910



245.0000, -0.0000, 0.0000



117.0000, -0.0000, 0.0000

Same Dimension

The Same Dimension uses a secret algorithm to generate beautiful new colors.



148.6880, 35.8090, -4.6950



185.5300, 56.6250, -7.4950



170.6950, 24.7630, -24.7810



85.6260, 3.9890, -0.7070



92.1200, 69.4630, -8.8810



15.4050, 11.9210, -1.2870

Inverse Universe

The Inverse Universe completely reimagines the original color for something new.



132.3120, -35.8090, 4.6950



159.4700, -56.6250, 7.4950



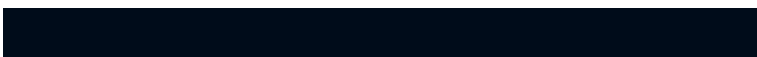
110.3050, -24.7630, 24.7810



83.9610, -4.2640, 0.1840



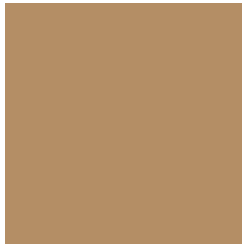
60.8800, -69.4630, 8.8810



10.0080, -11.6460, 1.8100

Previews

White Background



This preview shows how the YIQ color 148.6880, 35.8090, -4.6950 looks on a white background.

Color Contrast Check

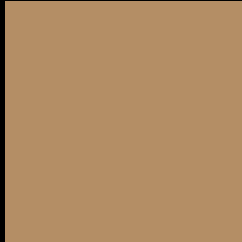
Large Text (above 18pt) WCAG AA ✓ Pass

Any Text WCAG AA × Fail

Large Text (above 18pt) WCAG AAA × Fail

Any Text WCAG AAA × Fail

Black Background



This preview shows how the YIQ color 148.6880, 35.8090, -4.6950 looks on a black background.

Color Contrast Check

Large Text (above 18pt) WCAG AA ✓ Pass

Any Text WCAG AA ✓ Pass

Large Text (above 18pt) WCAG AAA ✓ Pass

Any Text WCAG AAA ✓ Pass

If you want to check with other color combinations, try the [Color Contrast Checker](#).

YIQ 148.6880, 35.8090, -4.6950

Background



This preview shows how black text looks on a background with the YIQ color 148.6880, 35.8090, -4.6950.



This preview shows how white text looks on a background with the YIQ color 148.6880, 35.8090, -4.6950.

-4.6950.

Color Blindness Simulation

Color vision deficiency is a very complex topic, and I could not describe the different causes any better than Wikipedia does, so if you want to learn more, you should check out their [article about color blindness](#).

Dichromacy



Original Color

148.6880, 35.8090, -4.6950

Protanopia

147.4580, 21.5970, -11.4510

Deuteranopia

148.6770, 34.3420, -5.6420



Tritanopia

151.6060, 25.0770, 13.5970

Trichromacy



Original Color

148.6880, 35.8090, -4.6950

Protanomaly

147.6760, 26.9150, -8.7090

Deuteranomaly

148.9760, 34.9380, -5.4300

Tritanomaly

150.5430, 29.3880, 7.0520

Monochromacy



Original Color

148.6880, 35.8090, -4.6950

Achromatopsia

149.0000, 0.0000, -0.0000

Achromatomaly

148.5900, 12.8380, -1.3860

CSS Examples

Text

The CSS property to change the color of the text to YIQ 148.6880, 35.8090, -4.6950 is called "color". The color property can be set on classes, ids or directly on the HTML element.

This example shows how text in the color `rgb(180, 142, 101)` looks like.

```
.text, #text, p{  
    color:rgb(180, 142, 101)  
}
```

If you want to add a text shadow in that color use the text-shadow property, you can generate a text shadow directly with our [CSS Text Shadow Generator](#).

Here you see how black text with a 4 pixel rgb(180, 142, 101) colored shadow looks like.

```
.shadow{ text-shadow: 4px 4px 2px rgb(180, 142, 101) }
```

Border

The CSS property to change the border of an element to YIQ 148.6880, 35.8090, -4.6950 is called "border". The border property can be set on classes, ids or directly on the HTML element.

This example shows the color as border, it can be applied via the CSS property "border" or "border-color".

```
.border, #border, table{ border:4px solid rgb(180, 142, 101) }
```


If only the border color should be changed use the property border-color.

```
.border{ border-color:rgb(180, 142, 101) }
```

If you want to add a box shadow in that color use:

Here you see how a box with a 4 pixel rgb(180, 142, 101) colored shadow looks like.

```
.boxshadow{ -moz-box-shadow:4px 4px 4px  
4px rgb(180, 142, 101); -webkit-box-  
shadow:4px 4px 4px 4px rgb(180, 142, 101);  
box-shadow:4px 4px 4px 4px rgb(180, 142,  
101) }
```

Background

The CSS property to change the background color of an element to YIQ 148.6880, 35.8090, -4.6950 is called "background". The background property can be set on classes, ids or directly on the HTML element.

```
.background, #background, body{  
background: rgb(180, 142, 101) }
```

If only the background color should be changed can be used:

```
.background{ background-color: rgb(180,  
142, 101) }
```

This example shows the color as background, it is applied via the CSS property "background".

To optimize and compress your CSS code, you can use our [online CSS compressor and optimizer](#) based on csstidy. If you want to create a linear or radial gradient as background or border, check our [CSS Gradient Generator](#).

Hey! You found this booklet interesting? Support Converting Colors with the new Membership Option!

The pro membership hides all ads, plus gives you double the colors in the color bucket, and more awesome pro features!

[Learn more, Memberships starting at \\$2.50/m!](#)

**Follow me
on Twitter!**

@ConvertingColor