

Converting Colors

YIQ(148.8910, 28.2880, 4.9600)

Have a look what the booklet for
YIQ(148.8910, 28.2880, 4.9600)
contains.

YIQ(148.8910, 28.2880, 4.9600)	3
<i>Conversions</i>	4
<i>Details</i>	6
<i>Harmonies</i>	12
<i>Previews</i>	24
<i>Color Blindness Simulation</i>	28
<i>CSS Examples</i>	31

Color

**YIQ(148.8910, 28.2880,
4.9600)**

Conversions

Conversions Part 1

Format	Color
Hex	B38A7E
RGB	179, 138, 126
RGB Percent	70%, 54%, 49%
CMY	0.2979, 0.4589, 0.5058
CMYK	0.00, 0.23, 0.30, 0.30
HSL	14°, 26%, 60%
HSV	14°, 30%, 70%
XYZ	31.4496, 29.2656, 23.7404
YIQ	148.8910, 28.2880, 4.9600

Conversions

Conversions Part 2

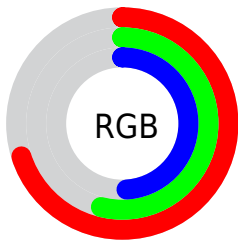
Format	Color
R_{YB}	179, 142, 126
Decimal	11766398
CIE _{Lab}	61.02, 13.87, 12.41
CIE _{LCh}	61, 18.609, 41.824
Yxy	29.2656, 0.3724, 0.3465
Android (android.graphics.Color)	4289956478 (0xFFB38A7E)
YUV	148.8910, -11.2853, 26.4056
Hunter-Lab	54.0977, 9.0997, 11.8494

Details

The YIQ color **148.8910, 28.2880, 4.9600** is a dark color, and the websafe version is hex **CC9999**. A complement of this color would be **156.1090, -28.2880, -4.9600**, and the grayscale version is **149.0000, 0.0000, -0.0000**.

A 20% lighter version of the original color is **203.6740, 30.3970, 5.2850**, and **97.8090, 25.5830, 4.4230** is the 20% darker color. If you saturate the color by 10%, you get **138.6210, 37.9160, 6.6840**, and if you desaturate by 10%, it is **159.1610, 18.6600, 3.2360**.

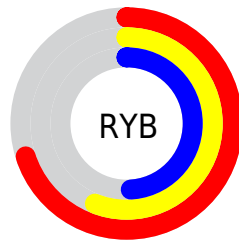
Distribution



Red (70%)

Green (54%)

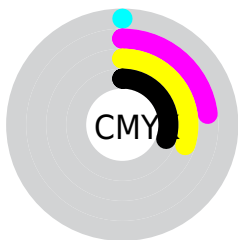
Blue (49%)



Red (70%)

Yellow (56%)

Blue (49%)

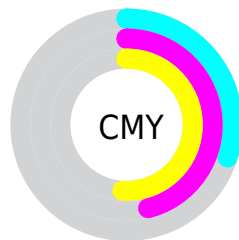


Cyan (0%)

Magenta (23%)

Yellow (30%)

Black (30%)



Cyan (30%)

Magenta (46%)

Yellow (51%)

Brightness & Saturation Gradients

These gradients show how the YIQ color 148.8910, 28.2880, 4.9600 changes by changing the brightness by 10 percent. The first figure shows a shift by +10% for each color and the second figure -10%.

Similar to the brightness gradients but the following saturation gradients show a change of the YIQ color 148.8910, 28.2880, 4.9600 by changing the saturation by 10% instead.

■ 148.8910, 28.2880,
4.9600

■ 148.8910, 28.2880,
4.9600

■ 255.0000, -0.0000,
-0.0000

■ 122.7060, 27.3710,
5.0590

■ 203.6740, 30.3970,
5.2850

■ 97.8090, 25.5830,
4.4230

■ 228.2820, 25.6290,
3.5890

■ 73.3250, 24.0700,
4.3100

■ 248.4970, 8.6660,
-2.8700

■ 50.5420, 21.9610,
3.9850

■ 28.8300, 21.0900,
3.2500

■ 8.9700, 17.8800,
6.3600

■ 0.0000, 0.0000,

0.0000

■ 148.8910, 28.2880,
4.9600

■ 148.8910, 28.2880,
4.9600

■ 138.6210, 37.9160,
6.6840

■ 159.1610, 18.6600,
3.2360

■ 128.3510, 47.5440,
8.4080

■ 169.4310, 9.0320,
1.5120

■ 118.0810, 57.1720,
10.1320

■ 179.7010, -0.5960,
-0.2120

■ 108.3980, 66.5250,
11.3330

■ 189.3840, -9.9490,
-1.4130

■ 98.2420, 75.8320,
13.3680

■ 199.6540,
-19.5770, -3.1370

■ 87.9720, 85.4600,
15.0920

■ 209.8100,
-28.8840, -5.1720

■ 77.7020, 95.0880,
16.8160

■ 220.0800,
-38.5120, -6.8960

■ 77.0010, 95.6840,
17.0280

■ 228.7540,
-43.6460, -12.9740

■ 232.2760,
-45.2960, -16.1120

Harmonies

Analogous

The Analogous color harmony consists of three colors that are next to each other on the color wheel.



150.0250, 25.2150, 11.0950



148.8910, 28.2880, 4.9600



147.6960, 24.1630, -2.8850

Triad

The Triadic color harmony groups three colors that are evenly spaced from another and form a triangle on the color wheel.



148.8910, 28.2880, 4.9600



141.7600, -17.4200, -14.7000



147.0710, -15.9570, 8.3550

Complementary

The Complementary color scheme is a pair of colors which are on the opposite of each other on the color wheel.



148.8910, 28.2880, 4.9600



156.1090, -28.2880, -4.9600

Split Complementary

Split-complementary colors differ from the complementary color scheme. The scheme consists of three colors, the original color and two neighbors of the complement color.



144.2000, -29.8020, 0.4540



148.8910, 28.2880, 4.9600



140.6970, -30.3040, -12.4800

Square

The Square scheme is like the rectangle color scheme, but the four colors are evenly spaced on the color wheel.



148.8910, 28.2880, 4.9600



143.7850, -1.3730, -13.6690



141.0480, -35.4860, -6.6700



149.6170, 0.1810, 13.2450

Rectangle

The Rectangle color scheme consists of four colors that form a rectangle on the color wheel.



148.8910, 28.2880, 4.9600



146.3530, 17.6990, -6.8850



141.0480, -35.4860, -6.6700



145.9670, -21.5960, 5.9240

Sweetspot

The Sweet Spot groups the original color and five complimentary colors.



148.8910, 28.2880, 4.9600



220.2140, 11.1410, 1.8370



146.6350, 18.1060, 24.2980



109.6480, 6.9230, 1.1870



245.0000, -0.0000, 0.0000



117.0000, -0.0000, 0.0000

Same Dimension

The Same Dimension uses a secret algorithm to generate beautiful new colors.



148.8910, 28.2880, 4.9600



184.3830, 44.5180, 8.1820



164.1530, 21.1380, -8.6380



83.8650, 4.8140, 0.8620



66.2920, 81.5630, 14.1310



11.2960, 13.8460, 2.3740

Inverse Universe

The Inverse Universe completely reimagines the original color for something new.



156.1090, -28.2880, -4.9600



196.0300, -44.2430, -7.6590



140.8470, -21.1380, 8.6380



85.1350, -4.8140, -0.8620



86.7080, -81.5630, -14.1310



14.7040, -13.8460, -2.3740

Previews

White Background



This preview shows how the YIQ color 148.8910, 28.2880, 4.9600 looks on a white background.

Color Contrast Check

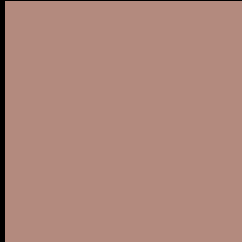
Large Text (above 18pt) WCAG AA ✓ Pass

Any Text WCAG AA × Fail

Large Text (above 18pt) WCAG AAA × Fail

Any Text WCAG AAA × Fail

Black Background



This preview shows how the YIQ color 148.8910, 28.2880, 4.9600 looks on a black background.

Color Contrast Check

Large Text (above 18pt) WCAG AA ✓ Pass

Any Text WCAG AA ✓ Pass

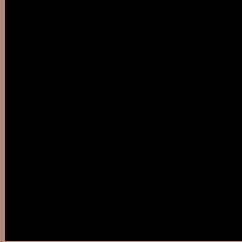
Large Text (above 18pt) WCAG AAA ✓ Pass

Any Text WCAG AAA × Fail

If you want to check with other color combinations, try the [Color Contrast Checker](#).

YIQ 148.8910, 28.2880, 4.9600

Background



This preview shows how black text looks on a background with the YIQ color 148.8910, 28.2880, 4.9600.



This preview shows how white text looks on a background with the YIQ color 148.8910, 28.2880,

4.9600.

Color Blindness Simulation

Color vision deficiency is a very complex topic, and I could not describe the different causes any better than Wikipedia does, so if you want to learn more, you should check out their [article about color blindness](#).

Dichromacy



Original Color

148.8910, 28.2880, 4.9600

Protanopia

147.2690, 9.3080, -3.4920

Deuteranopia

148.4340, 22.1450, 0.6490



Tritanopia

150.0080, 23.8850, 13.1730

Trichromacy



Original Color

148.8910, 28.2880, 4.9600

Protanomaly

147.9710, 16.1390, -0.6370

Deuteranomaly

148.7440, 24.2080, 1.8080

Tritanomaly

149.4980, 25.2610, 10.2610

Monochromacy



Original Color

148.8910, 28.2880, 4.9600

Achromatopsia

149.0000, 0.0000, -0.0000

Achromatomaly

149.0290, 10.2240, 1.9360

CSS Examples

Text

The CSS property to change the color of the text to YIQ 148.8910, 28.2880, 4.9600 is called "color". The color property can be set on classes, ids or directly on the HTML element.

This example shows how text in the color `rgb(179, 138, 126)` looks like.

```
.text, #text, p{  
    color:rgb(179, 138, 126)  
}
```

If you want to add a text shadow in that color use the text-shadow property, you can generate a text shadow directly with our [CSS Text Shadow Generator](#).

Here you see how black text with a 4 pixel rgb(179, 138, 126) colored shadow looks like.

```
.shadow{ text-shadow: 4px 4px 2px rgb(179, 138, 126) }
```

Border

The CSS property to change the border of an element to YIQ 148.8910, 28.2880, 4.9600 is called "border". The border property can be set on classes, ids or directly on the HTML element.

This example shows the color as border, it can be applied via the CSS property "border" or "border-color".

```
.border, #border, table{ border:4px solid rgb(179, 138, 126) }
```


If only the border color should be changed use the property `border-color`.

```
.border{ border-color:rgb(179, 138, 126) }
```

If you want to add a box shadow in that color use:

Here you see how a box with a 4 pixel `rgb(179, 138, 126)` colored shadow looks like.

```
.boxshadow{ -moz-box-shadow:4px 4px 4px  
4px rgb(179, 138, 126); -webkit-box-  
shadow:4px 4px 4px 4px rgb(179, 138, 126);  
box-shadow:4px 4px 4px 4px rgb(179, 138,  
126) }
```

Background

The CSS property to change the background color of an element to YIQ 148.8910, 28.2880, 4.9600 is called "background". The background property can be set on classes, ids or directly on the HTML element.

```
.background, #background, body{  
background: rgb(179, 138, 126) }
```

If only the background color should be changed can be used:

```
.background{ background-color: rgb(179,  
138, 126) }
```

This example shows the color as background, it is applied via the CSS property "background".

To optimize and compress your CSS code, you can use our [online CSS compressor and optimizer](#) based on csstidy. If you want to create a linear or radial gradient as background or border, check our [CSS Gradient Generator](#).

Hey! You found this booklet interesting? Support Converting Colors with the new Membership Option!

The pro membership hides all ads, plus gives you double the colors in the color bucket, and more awesome pro features!

[Learn more, Memberships starting at \\$2.50/m!](#)

**Follow me
on Twitter!**

@ConvertingColor