

# Converting Colors

YIQ(149.4440, 25.3530, 8.5930)

Have a look what the booklet for  
YIQ(149.4440, 25.3530, 8.5930)  
contains.

<b>YIQ(149.4440, 25.3530, 8.5930)</b> .....	3
<b><i>Conversions</i></b> .....	4
<b><i>Details</i></b> .....	6
<b><i>Harmonies</i></b> .....	12
<b><i>Previews</i></b> .....	24
<b><i>Color Blindness Simulation</i></b> .....	28
<b><i>CSS Examples</i></b> .....	31

# Color

**YIQ(149.4440, 25.3530,  
8.5930)**

# Conversions

## Conversions Part 1

Format	Color
Hex	B38988
RGB	179, 137, 136
RGB Percent	70%, 54%, 53%
CMY	0.2979, 0.4628, 0.4666
CMYK	0.00, 0.23, 0.24, 0.30
HSL	1°, 22%, 62%
HSV	1°, 24%, 70%
XYZ	31.9852, 29.2513, 27.2625
YIQ	149.4440, 25.3530, 8.5930

# Conversions

## Conversions Part 2

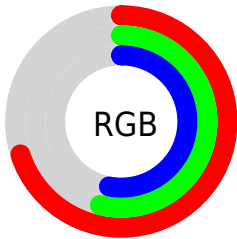
<b>Format</b>	<b>Color</b>
<b>RYB</b>	179, 137, 136
Decimal	11766152
CIELab	61.00, 15.87, 6.71
CIELCh	61, 17.232, 22.906
Yxy	29.2513, 0.3614, 0.3305
Android (android.graphics.Color)	4289956232 (0xFFB38988)
YUV	149.4440, -6.6279, 25.9206
Hunter-Lab	54.0845, 10.9157, 7.9727

# Details

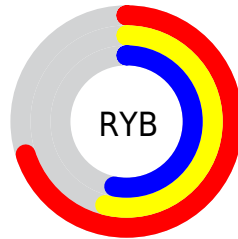
The YIQ color **149.4440, 25.3530, 8.5930** is a light color, and the websafe version is hex **CC9999**. A complement of this color would be **165.5560, -25.3530, -8.5930**, and the grayscale version is **149.0000, 0.0000, -0.0000**.

A 20% lighter version of the original color is **203.9280, 26.8660, 8.7060**, and **98.2480, 22.9690, 7.7450** is the 20% darker color. If you saturate the color by 10%, you get **136.8260, 36.0810, 12.4090**, and if you desaturate by 10%, it is **161.4750, 14.9000, 5.3000**.

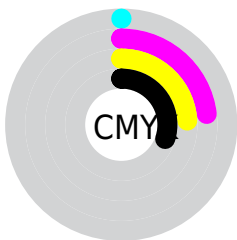
# Distribution



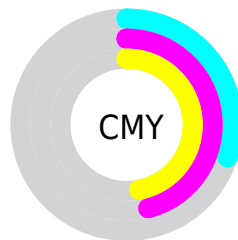
- Red (70%)
- Green (54%)
- Blue (53%)



- Red (70%)
- Yellow (54%)
- Blue (53%)



- Cyan (0%)
- Magenta (23%)
- Yellow (24%)
- Black (30%)



- Cyan (30%)
- Magenta (46%)
- Yellow (47%)

# Brightness & Saturation Gradients

These gradients show how the YIQ color 149.4440, 25.3530, 8.5930 changes by changing the brightness by 10 percent. The first figure shows a shift by +10% for each color and the second figure -10%.


Similar to the brightness gradients but the following saturation gradients show a change of the YIQ color 149.4440, 25.3530, 8.5930 by changing the saturation by 10% instead.





 149.4440, 25.3530,  
8.5930


 149.4440, 25.3530,  
8.5930


255.0000, -0.0000,  
-0.0000

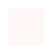
 123.2590, 24.4360,  
8.6920


 203.9280, 26.8660,  
8.7060


 98.2480, 22.9690,  
7.7450


 228.9490, 22.3730,  
7.5330

 74.0630, 22.0520,  
7.8440

 249.2780, 5.0890,  
1.3850

 51.1660, 20.2640,  
7.2080

 29.3830, 18.1550,  
6.8830

 9.5680, 19.0720,  
6.7840

 0.0000, 0.0000,

0.0000

■ 149.4440, 25.3530,  
8.5930

■ 149.4440, 25.3530,  
8.5930

■ 136.8260, 36.0810,  
12.4090

■ 161.4750, 14.9000,  
5.3000

■ 124.7950, 46.5340,  
15.7020

■ 174.0930, 4.1720,  
1.4840

■ 112.1770, 57.2620,  
19.5180

■ 186.1240, -6.2810,  
-1.8090

■ 100.1460, 67.7150,  
22.8110

■ 198.7420,  
-17.0090, -5.6250

■ 87.6420, 78.1220,  
26.9380

■ 211.3600,  
-27.7370, -9.4410

■ 75.6110, 88.5750,  
30.2310

■ 223.2770,  
-37.8690, -13.0450

■ 62.9930, 99.3030,  
34.0470

■ 232.2760,  
-45.2960, -16.1120

■ 55.8690, 105.5840,  
35.8560

# Harmonies

## Analogous

The Analogous color harmony consists of three colors that are next to each other on the color wheel.



149.9580, 18.1540, 12.4100



149.4440, 25.3530, 8.5930



148.3420, 25.4000, 2.2320

# Triad

The Triadic color harmony groups three colors that are evenly spaced from another and form a triangle on the color wheel.



149.4440, 25.3530, 8.5930



143.5610, -6.5540, -13.3860



145.6030, -23.5670, 3.0970

# Complementary

The Complementary color scheme is a pair of colors which are on the opposite of each other on the color wheel.



149.4440, 25.3530, 8.5930



165.5560, -25.3530, -8.5930

# Split Complementary

Split-complementary colors differ from the complementary color scheme. The scheme consists of three colors, the original color and two neighbors of the complement color.



142.7820, -31.6810, -4.0410



149.4440, 25.3530, 8.5930



141.9600, -20.8590, -12.9470

# Square

The Square scheme is like the rectangle color scheme, but the four colors are evenly spaced on the color wheel.



149.4440, 25.3530, 8.5930



145.2700, 7.5670, -10.4890



141.2780, -30.4420, -9.9780



148.4200, -9.6300, 9.3300



# Rectangle

The Rectangle color scheme consists of four colors that form a rectangle on the color wheel.



149.4440, 25.3530, 8.5930



147.3260, 22.3290, -2.6870



141.2780, -30.4420, -9.9780



144.2820, -27.0970, 0.9910

# Sweetspot

The Sweet Spot groups the original color and five complimentary colors.



149.4440, 25.3530, 8.5930



220.7840, 9.5360, 3.3920



153.6450, 12.1460, 22.1780



110.6910, 5.3640, 1.9080



245.0000, -0.0000, 0.0000



117.0000, -0.0000, 0.0000



# Same Dimension

The Same Dimension uses a secret algorithm to generate beautiful new colors.



149.4440, 25.3530, 8.5930



185.6200, 39.6570, 13.6810



161.7710, 19.5780, -2.3900



83.2780, 5.0890, 1.3850



47.5080, 90.3630, 30.8670



8.3610, 15.2210, 4.9890



# Inverse Universe

The Inverse Universe completely reimagines the original color for something new.



165.5560, -25.3530, -8.5930



211.3800, -39.6570, -13.6810



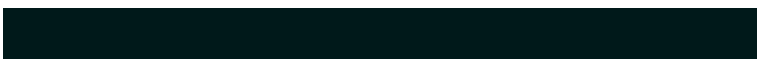
153.2290, -19.5780, 2.3900



86.3090, -5.3640, -1.9080



105.4920, -90.3630, -30.8670

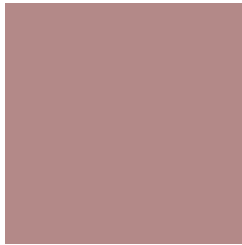


17.6390, -15.2210, -4.9890



# Previews

## White Background



This preview shows how the YIQ color 149.4440, 25.3530, 8.5930 looks on a white background.

## Color Contrast Check

Large Text (above 18pt) WCAG AA ✓ Pass

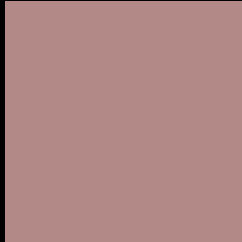
Any Text WCAG AA ✗ Fail

Large Text (above 18pt) WCAG AAA ✗ Fail

Any Text WCAG AAA ✗ Fail



# Black Background



This preview shows how the YIQ color 149.4440, 25.3530, 8.5930 looks on a black background.

## Color Contrast Check

Large Text (above 18pt) WCAG AA ✓ Pass

Any Text WCAG AA ✓ Pass

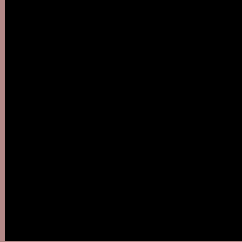
Large Text (above 18pt) WCAG AAA ✓ Pass

Any Text WCAG AAA × Fail

If you want to check with other color combinations, try the [Color Contrast Checker](#).

**YIQ 149.4440, 25.3530, 8.5930**

## **Background**



This preview shows how black text looks on a background with the YIQ color 149.4440, 25.3530, 8.5930.



This preview shows how white text looks on a background with the YIQ color 149.4440, 25.3530,

8.5930.

# Color Blindness Simulation

Color vision deficiency is a very complex topic, and I could not describe the different causes any better than Wikipedia does, so if you want to learn more, you should check out their [article about color blindness](#).

## Dichromacy



### Original Color

149.4440, 25.3530, 8.5930

### Protanopia

147.5120, 4.3100, -1.0180

### Deuteranopia

148.3780, 16.5510, 2.9110



## Tritanopia

149.7090, 23.2890, 12.9610

# Trichromacy



## Original Color

149.4440, 25.3530, 8.5930

## Protanomaly

147.9260, 12.0120, 2.5720

## Deuteranomaly

148.6990, 20.0810, 5.0170

## Tritanomaly

149.8400, 24.2980, 11.1940

# Monochromacy



## Original Color

149.4440, 25.3530, 8.5930

## Achromatopsia

149.0000, 0.0000, -0.0000

## Achromatomaly

149.3710, 9.2610, 2.8690

# CSS Examples

## Text

The CSS property to change the color of the text to YIQ 149.4440, 25.3530, 8.5930 is called "color". The color property can be set on classes, ids or directly on the HTML element.

This example shows how text in the color `rgb(179, 137, 136)` looks like.

```
.text, #text, p{  
    color:rgb(179, 137, 136)  
}
```

If you want to add a text shadow in that color use the text-shadow property, you can generate a text shadow directly with our [CSS Text Shadow Generator](#).

Here you see how black text with a 4 pixel rgb(179, 137, 136) colored shadow looks like.

```
.shadow{ text-shadow: 4px 4px 2px rgb(179, 137, 136) }
```

## Border

The CSS property to change the border of an element to YIQ 149.4440, 25.3530, 8.5930 is called "border". The border property can be set on classes, ids or directly on the HTML element.

This example shows the color as border, it can be applied via the CSS property "border" or "border-color".

```
.border, #border, table{ border:4px solid rgb(179, 137, 136) }
```



If only the border color should be changed use the property `border-color`.

```
.border{ border-color:rgb(179, 137, 136) }
```

If you want to add a box shadow in that color use:

Here you see how a box with a 4 pixel `rgb(179, 137, 136)` colored shadow looks like.

```
.boxshadow{ -moz-box-shadow:4px 4px 4px  
4px rgb(179, 137, 136); -webkit-box-  
shadow:4px 4px 4px 4px rgb(179, 137, 136);  
box-shadow:4px 4px 4px 4px rgb(179, 137,  
136) }
```

# Background

The CSS property to change the background color of an element to YIQ 149.4440, 25.3530, 8.5930 is called "background". The background property can be set on classes, ids or directly on the HTML element.

```
.background, #background, body{  
background: rgb(179, 137, 136) }
```

If only the background color should be changed can be used:

```
.background{ background-color: rgb(179,  
137, 136) }
```

This example shows the color as background, it is applied via the CSS property "background".

To optimize and compress your CSS code, you can use our [online CSS compressor and optimizer](#) based on csstidy. If you want to create a linear or radial gradient as background or border, check our [CSS Gradient Generator](#).

Hey! You found this booklet interesting? Support Converting Colors with the new Membership Option!

The pro membership hides all ads, plus gives you double the colors in the color bucket, and more awesome pro features!

**[Learn more, Memberships starting at \\$2.50/m!](#)**

**Follow me  
on Twitter!**

@ConvertingColor