

Converting Colors

YIQ(149.6440, 21.9140, 10.3460)

Have a look what the booklet for
YIQ(149.6440, 21.9140, 10.3460)
contains.

YIQ(149.6440, 21.9140, 10.3460)	3
<i>Conversions</i>	4
<i>Details</i>	6
<i>Harmonies</i>	12
<i>Previews</i>	24
<i>Color Blindness Simulation</i>	28
<i>CSS Examples</i>	31

Color

**YIQ(149.6440, 21.9140,
10.3460)**

Conversions

Conversions Part 1

Format	Color
Hex	B1898F
RGB	177, 137, 143
RGB Percent	69%, 54%, 56%
CMY	0.3058, 0.4628, 0.4391
CMYK	0.00, 0.23, 0.19, 0.31
HSL	351°, 20%, 62%
HSV	351°, 23%, 69%
XYZ	32.0400, 29.2204, 29.9464
YIQ	149.6440, 21.9140, 10.3460

Conversions

Conversions Part 2

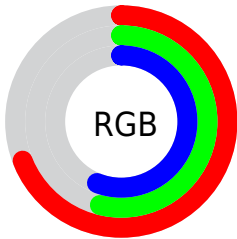
Format	Color
RYB	177, 137, 143
Decimal	11635087
CIELab	60.98, 16.19, 2.65
CIElCh	61, 16.404, 9.305
Yxy	29.2204, 0.3513, 0.3204
Android (android.graphics.Color)	4289825167 (0xFFB1898F)
YUV	149.6440, -3.2755, 23.9912
Hunter-Lab	54.0559, 11.2026, 4.9932

Details

The YIQ color **149.6440, 21.9140, 10.3460** is a light color, and the websafe version is hex **CC9999**. A complement of this color would be **164.3560, -21.9140, -10.3460**, and the grayscale version is **150.0000, -0.0000, -0.0000**.

A 20% lighter version of the original color is **204.2420, 23.1060, 10.7700**, and **98.7470, 20.1260, 9.7100** is the 20% darker color. If you saturate the color by 10%, you get **137.3680, 31.6790, 15.0950**, and if you desaturate by 10%, it is **161.9200, 12.1490, 5.5970**.

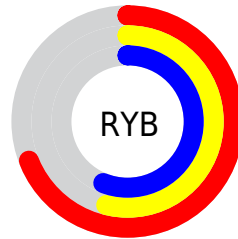
Distribution



Red (69%)

Green (54%)

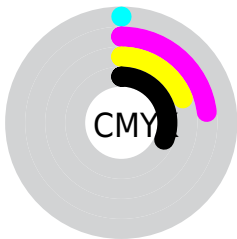
Blue (56%)



Red (69%)

Yellow (54%)

Blue (56%)

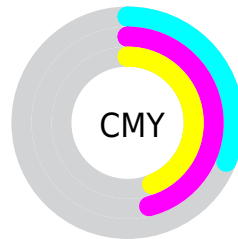


Cyan (0%)

Magenta (23%)

Yellow (19%)

Black (31%)



Cyan (31%)

Magenta (46%)

Yellow (44%)

Brightness & Saturation Gradients

These gradients show how the YIQ color 149.6440, 21.9140, 10.3460 changes by changing the brightness by 10 percent. The first figure shows a shift by +10% for each color and the second figure -10%.

Similar to the brightness gradients but the following saturation gradients show a change of the YIQ color 149.6440, 21.9140, 10.3460 by changing the saturation by 10% instead.

■ 149.6440, 21.9140,
10.3460

■ 149.6440, 21.9140,
10.3460

255.0000, -0.0000,
-0.0000

■ 123.3450, 21.3180,
10.1340

■ 204.2420, 23.1060,
10.7700

■ 98.7470, 20.1260,
9.7100

■ 229.8610, 19.8050,
10.0210

■ 74.1490, 18.9340,
9.2860

■ 250.0760, 2.8420,
3.5620

■ 51.5510, 17.7420,
8.8620

■ 29.6540, 15.9540,
8.2260

■ 9.5680, 19.0720,
6.7840

■ 0.0000, 0.0000,

0.0000

149.6440, 21.9140,
10.3460

149.6440, 21.9140,
10.3460

137.3680, 31.6790,
15.0950

161.9200, 12.1490,
5.5970

125.6790, 41.1690,
19.3210

173.6090, 2.6590,
1.3710

113.4030, 50.9340,
24.0700

185.8850, -7.1060,
-3.3780

101.1270, 60.6990,
28.8190

198.1610,
-16.8710, -8.1270

88.8510, 70.4640,
33.5680

210.4370,
-26.6360, -12.8760

77.1620, 79.9540,
37.7940

222.1260,
-36.1260, -17.1020

■ 64.8860, 89.7190,
42.5430

■ 230.8800,
-44.2410, -18.7130

■ 56.0010, 96.8250,
45.9210

■ 231.6780,
-46.4880, -16.5360

Harmonies

Analogous

The Analogous color harmony consists of three colors that are next to each other on the color wheel.



149.8480, 12.6520, 13.0040



149.6440, 21.9140, 10.3460



148.9230, 25.2620, 4.7340

Triad

The Triadic color harmony groups three colors that are evenly spaced from another and form a triangle on the color wheel.



149.6440, 21.9140, 10.3460



144.3230, 0.0480, -11.8880



144.0540, -26.4550, 0.3690

Complementary

The Complementary color scheme is a pair of colors which are on the opposite of each other on the color wheel.



149.6440, 21.9140, 10.3460



164.3560, -21.9140, -10.3460

Split Complementary

Split-complementary colors differ from the complementary color scheme. The scheme consists of three colors, the original color and two neighbors of the complement color.



141.7990, -30.3510, -6.1190



149.6440, 21.9140, 10.3460



142.6680, -14.1650, -13.1170

Square

The Square scheme is like the rectangle color scheme, but the four colors are evenly spaced on the color wheel.



149.6440, 21.9140, 10.3460



146.4880, 12.8850, -7.7470



141.6760, -25.8110, -11.3070



147.2020, -14.9480, 6.5880

Rectangle

The Rectangle color scheme consists of four colors that form a rectangle on the color wheel.



149.6440, 21.9140, 10.3460



147.9180, 23.6580, 0.7620



141.6760, -25.8110, -11.3070



143.5050, -29.3430, -2.3590

Sweetspot

The Sweet Spot groups the original color and five complimentary colors.



149.6440, 21.9140, 10.3460



218.4250, 9.1690, 4.5370



151.4270, 6.8280, 19.4360



108.8050, 5.0430, 2.2190



242.0000, -0.0000, 0.0000



115.0000, -0.0000, 0.0000

Same Dimension

The Same Dimension uses a secret algorithm to generate beautiful new colors.



149.6440, 21.9140, 10.3460



187.5640, 34.0630, 15.9430



156.5910, 20.2650, 1.6810



82.9190, 4.7220, 2.5300



48.3690, 83.8050, 39.5890



8.2300, 14.2120, 6.7560

Inverse Universe

The Inverse Universe completely reimagines the original color for something new.



149.6440, 21.9140, 10.3460



187.5640, 34.0630, 15.9430



157.4090, -20.2650, -1.6810



82.9190, 4.7220, 2.5300



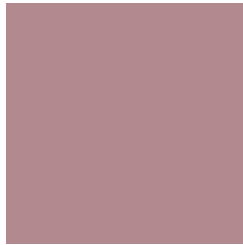
48.3690, 83.8050, 39.5890



8.2300, 14.2120, 6.7560

Previews

White Background



This preview shows how the YIQ color 149.6440, 21.9140, 10.3460 looks on a white background.

Color Contrast Check

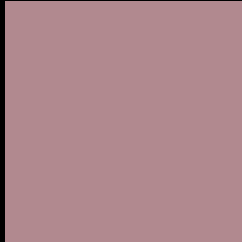
Large Text (above 18pt) WCAG AA ✓ Pass

Any Text WCAG AA ✗ Fail

Large Text (above 18pt) WCAG AAA ✗ Fail

Any Text WCAG AAA ✗ Fail

Black Background



This preview shows how the YIQ color 149.6440, 21.9140, 10.3460 looks on a black background.

Color Contrast Check

Large Text (above 18pt) WCAG AA ✓ Pass

Any Text WCAG AA ✓ Pass

Large Text (above 18pt) WCAG AAA ✓ Pass

Any Text WCAG AAA × Fail

If you want to check with other color combinations, try the [Color Contrast Checker](#).

YIQ 149.6440, 21.9140, 10.3460

Background



This preview shows how black text looks on a background with the YIQ color 149.6440, 21.9140, 10.3460.



This preview shows how white text looks on a background with the YIQ color 149.6440, 21.9140,

Color Blindness Simulation

Color vision deficiency is a very complex topic, and I could not describe the different causes any better than Wikipedia does, so if you want to learn more, you should check out their [article about color blindness](#).

Dichromacy



Original Color

149.6440, 21.9140, 10.3460

Protanopia

148.1250, 1.1460, 1.2580

Deuteranopia

148.5780, 13.1120, 4.6640



Tritanopia

149.5130, 20.9050, 12.1130

Trichromacy



Original Color

149.6440, 21.9140, 10.3460

Protanomaly

148.5390, 8.8480, 4.8480

Deuteranomaly

148.8990, 16.6420, 6.7700

Tritanomaly

149.3990, 21.2260, 11.8020

Monochromacy



Original Color

149.6440, 21.9140, 10.3460

Achromatopsia

150.0000, -0.0000, -0.0000

Achromatomaly

149.7130, 8.2980, 3.8020

CSS Examples

Text

The CSS property to change the color of the text to YIQ 149.6440, 21.9140, 10.3460 is called "color". The color property can be set on classes, ids or directly on the HTML element.

This example shows how text in the color `rgb(177, 137, 143)` looks like.

```
.text, #text, p{  
    color:rgb(177, 137, 143)  
}
```

If you want to add a text shadow in that color use the text-shadow property, you can generate a text shadow directly with our [CSS Text Shadow Generator](#).

Here you see how black text with a 4 pixel rgb(177, 137, 143) colored shadow looks like.

```
.shadow{ text-shadow: 4px 4px 2px rgb(177, 137, 143) }
```

Border

The CSS property to change the border of an element to YIQ 149.6440, 21.9140, 10.3460 is called "border". The border property can be set on classes, ids or directly on the HTML element.

This example shows the color as border, it can be applied via the CSS property "border" or "border-color".

```
.border, #border, table{ border:4px solid rgb(177, 137, 143) }
```


If only the border color should be changed use the property `border-color`.

```
.border{ border-color:rgb(177, 137, 143) }
```

If you want to add a box shadow in that color use:

Here you see how a box with a 4 pixel `rgb(177, 137, 143)` colored shadow looks like.

```
.boxshadow{ -moz-box-shadow:4px 4px 4px  
4px rgb(177, 137, 143); -webkit-box-  
shadow:4px 4px 4px 4px rgb(177, 137, 143);  
box-shadow:4px 4px 4px 4px rgb(177, 137,  
143) }
```

Background

The CSS property to change the background color of an element to YIQ 149.6440, 21.9140, 10.3460 is called "background". The background property can be set on classes, ids or directly on the HTML element.

```
.background, #background, body{  
background: rgb(177, 137, 143) }
```

If only the background color should be changed can be used:

```
.background{ background-color: rgb(177,  
137, 143) }
```

This example shows the color as background, it is applied via the CSS property "background".

To optimize and compress your CSS code, you can use our [online CSS compressor and optimizer](#) based on csstidy. If you want to create a linear or radial gradient as background or border, check our [CSS Gradient Generator](#).

Hey! You found this booklet interesting? Support Converting Colors with the new Membership Option!

The pro membership hides all ads, plus gives you double the colors in the color bucket, and more awesome pro features!

[Learn more, Memberships starting at \\$2.50/m!](#)

**Follow me
on Twitter!**

@ConvertingColor