

# Converting Colors

YIQ(150.8460, 41.3560, -0.5960)

Have a look what the booklet for  
YIQ(150.8460, 41.3560, -0.5960)  
contains.

<b>YIQ(150.8460, 41.3560, -0.5960)</b> .....	3
<b><i>Conversions</i></b> .....	4
<b><i>Details</i></b> .....	6
<b><i>Harmonies</i></b> .....	12
<b><i>Previews</i></b> .....	24
<b><i>Color Blindness Simulation</i></b> .....	28
<b><i>CSS Examples</i></b> .....	31

# Color

**YIQ(150.8460, 41.3560,  
-0.5960)**

# Conversions

## Conversions Part 1

Format	Color
Hex	BE8C68
RGB	190, 140, 104
RGB Percent	75%, 55%, 41%
CMY	0.2548, 0.4510, 0.5920
CMYK	0.00, 0.26, 0.45, 0.25
HSL	25°, 40%, 58%
HSV	25°, 45%, 75%
XYZ	33.1175, 30.7008, 17.2901
YIQ	150.8460, 41.3560, -0.5960

# Conversions

## Conversions Part 2

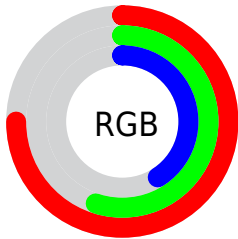
Format	Color
R <sub>Y</sub> B	190, 166, 104
Decimal	12487784
CIE Lab	62.25, 14.54, 26.62
CIE LCh	62, 30.328, 61.361
Yxy	30.7008, 0.4083, 0.3785
Android (android.graphics.Color)	4290677864 (0xFFBE8C68)
YUV	150.8460, -23.0951, 34.3381
Hunter-Lab	55.4083, 9.7249, 20.2844

# Details

The YIQ color **150.8460, 41.3560, -0.5960** is a dark color, and the websafe version is hex **CC9966**. A complement of this color would be **143.1540, -41.3560, 0.5960**, and the grayscale version is **151.0000, -0.0000, 0.0000**.

A 20% lighter version of the original color is **205.8140, 44.3820, -0.3700**, and **99.2800, 37.1380, -1.2460** is the 20% darker color. If you saturate the color by 10%, you get **142.2230, 50.4800, -0.7520**, and if you desaturate by 10%, it is **159.4690, 32.2320, -0.4400**.

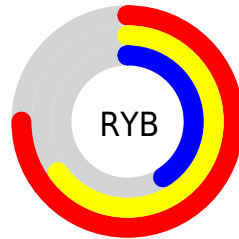
# Distribution



Red (75%)

Green (55%)

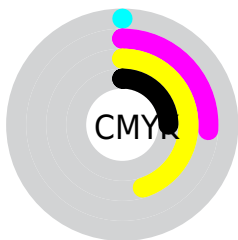
Blue (41%)



Red (75%)

Yellow (65%)

Blue (41%)

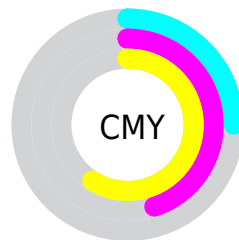


Cyan (0%)

Magenta (26%)

Yellow (45%)

Black (25%)



Cyan (25%)

Magenta (45%)

Yellow (59%)

# Brightness & Saturation Gradients

These gradients show how the YIQ color 150.8460, 41.3560, -0.5960 changes by changing the brightness by 10 percent. The first figure shows a shift by +10% for each color and the second figure -10%.

Similar to the brightness gradients but the following saturation gradients show a change of the YIQ color 150.8460, 41.3560, -0.5960 by changing the saturation by 10% instead.



■ 150.8460, 41.3560,  
-0.5960

■ 150.8460, 41.3560,  
-0.5960

■ 255.0000, -0.0000,  
-0.0000

■ 124.4760, 39.5220,  
-0.3980

■ 205.8140, 44.3820,  
-0.3700

■ 99.2800, 37.1380,  
-1.2460

■ 227.4210, 32.1870,  
-5.1330

■ 74.9100, 35.3040,  
-1.0480

■ 246.9350, 15.8200,  
-11.3800

■ 51.4150, 32.3240,  
-2.1080

■ 253.1760, 5.1360,  
-4.9760

■ 30.2450, 27.0510,  
-0.1570

■ 9.8670, 19.6680,  
6.9960

■ 0.0000, 0.0000,

0.0000

■ 150.8460, 41.3560,  
-0.5960

■ 150.8460, 41.3560,  
-0.5960

■ 142.2230, 50.4800,  
-0.7520

■ 159.4690, 32.2320,  
-0.4400

■ 133.6000, 59.6040,  
-0.9080

■ 168.0920, 23.1080,  
-0.2840

■ 124.9770, 68.7280,  
-1.0640

■ 176.7150, 13.9840,  
-0.1280

■ 116.3540, 77.8520,  
-1.2200

■ 185.3380, 4.8600,  
0.0280

■ 107.7310, 86.9760,  
-1.3760

■ 193.9610, -4.2640,  
0.1840

■ 103.1830, 91.5150,  
-1.0370

■ 202.5840,  
-13.3880, 0.3400

■ 211.2070,  
-22.5120, 0.4960

■ 219.7160,  
-31.3150, 0.3410

■ 226.7600,  
-34.6150, -5.9350

# Harmonies

## Analogous

The Analogous color harmony consists of three colors that are next to each other on the color wheel.



152.0180, 44.2880, 12.3520



150.8460, 41.3560, -0.5960



148.6390, 28.3370, -12.4550

# Triad

The Triadic color harmony groups three colors that are evenly spaced from another and form a triangle on the color wheel.



150.8460, 41.3560, -0.5960



136.7930, -48.5500, -23.2220



152.9290, -9.2650, 19.2390

# Complementary

The Complementary color scheme is a pair of colors which are on the opposite of each other on the color wheel.



150.8460, 41.3560, -0.5960



143.1540, -41.3560, 0.5960

# Split Complementary

Split-complementary colors differ from the complementary color scheme. The scheme consists of three colors, the original color and two neighbors of the complement color.



147.7510, -38.4230, 8.0170



150.8460, 41.3560, -0.5960



133.3040, -68.8620, -18.5420

# Square

The Square scheme is like the rectangle color scheme, but the four colors are evenly spaced on the color wheel.



150.8460, 41.3560, -0.5960



142.1090, -20.2610, -23.7890



138.8030, -62.5370, -6.5130



154.4500, 17.1890, 24.3970



# Rectangle

The Rectangle color scheme consists of four colors that form a rectangle on the color wheel.



150.8460, 41.3560, -0.5960



146.9360, 14.0790, -18.3770



138.8030, -62.5370, -6.5130



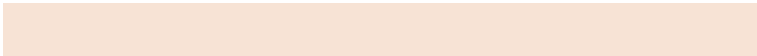
151.2590, -19.1220, 16.1580

# Sweetspot

The Sweet Spot groups the original color and five complimentary colors.



150.8460, 41.3560, -0.5960



231.3840, 16.4140, -0.1140



135.4140, 35.2060, 33.7820



115.5620, 10.0410, -0.2550



252.0000, 0.0000, 0.0000



125.0000, 0.0000, 0.0000



# Same Dimension

The Same Dimension uses a secret algorithm to generate beautiful new colors.



150.8460, 41.3560, -0.5960



186.6390, 63.8680, -1.0920



176.0870, 29.5310, -23.0850



90.0390, 4.2640, -0.1840



85.9840, 76.0180, -1.0220



16.9000, 14.9010, -0.2270



# Inverse Universe

The Inverse Universe completely reimagines the original color for something new.



143.1540, -41.3560, 0.5960



174.9480, -64.1430, 0.5690



117.9130, -29.5310, 23.0850



88.9610, -4.2640, 0.1840



72.0160, -76.0180, 1.0220



14.1000, -14.9010, 0.2270



# Previews

## White Background



This preview shows how the YIQ color 150.8460, 41.3560, -0.5960 looks on a white background.

## Color Contrast Check

Large Text (above 18pt) WCAG AA × Fail

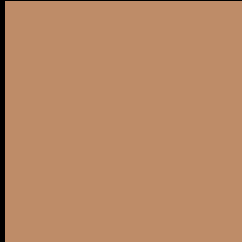
Any Text WCAG AA × Fail

Large Text (above 18pt) WCAG AAA × Fail

Any Text WCAG AAA × Fail



# Black Background



This preview shows how the YIQ color 150.8460, 41.3560, -0.5960 looks on a black background.

## Color Contrast Check

Large Text (above 18pt) WCAG AA ✓ Pass

Any Text WCAG AA ✓ Pass

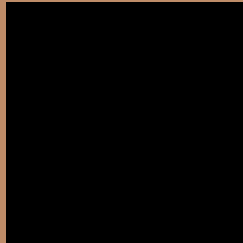
Large Text (above 18pt) WCAG AAA ✓ Pass

Any Text WCAG AAA ✓ Pass

If you want to check with other color combinations, try the [Color Contrast Checker](#).

# YIQ 150.8460, 41.3560, -0.5960

## Background



This preview shows how black text looks on a background with the YIQ color 150.8460, 41.3560, -0.5960.



This preview shows how white text looks on a background with the YIQ color 150.8460, 41.3560, -0.5960.

-0.5960.

# Color Blindness Simulation

Color vision deficiency is a very complex topic, and I could not describe the different causes any better than Wikipedia does, so if you want to learn more, you should check out their [article about color blindness](#).

## Dichromacy



### Original Color

150.8460, 41.3560, -0.5960

### Protanopia

149.5010, 20.0380, -10.7300

### Deuteranopia

150.0900, 34.6170, -5.1190



## Tritanopia

153.7810, 31.9540, 15.6180

# Trichromacy



## Original Color

150.8460, 41.3560, -0.5960

## Protanomaly

149.9150, 27.7400, -7.1400

## Deuteranomaly

150.6990, 37.2760, -3.7480

## Tritanomaly

152.9460, 35.6230, 9.6950

# Monochromacy



## Original Color

150.8460, 41.3560, -0.5960

## Achromatopsia

151.0000, -0.0000, 0.0000

## Achromatomaly

150.9000, 14.9010, -0.2270

# CSS Examples

## Text

The CSS property to change the color of the text to YIQ 150.8460, 41.3560, -0.5960 is called "color". The color property can be set on classes, ids or directly on the HTML element.

This example shows how text in the color `rgb(190, 140, 104)` looks like.

```
.text, #text, p{  
    color:rgb(190, 140, 104)  
}
```

If you want to add a text shadow in that color use the text-shadow property, you can generate a text shadow directly with our [CSS Text Shadow Generator](#).

Here you see how black text with a 4 pixel rgb(190, 140, 104) colored shadow looks like.

```
.shadow{ text-shadow: 4px 4px 2px rgb(190, 140, 104) }
```

## Border

The CSS property to change the border of an element to YIQ 150.8460, 41.3560, -0.5960 is called "border". The border property can be set on classes, ids or directly on the HTML element.

This example shows the color as border, it can be applied via the CSS property "border" or "border-color".

```
.border, #border, table{ border:4px solid rgb(190, 140, 104) }
```



If only the border color should be changed use the property `border-color`.

```
.border{ border-color:rgb(190, 140, 104) }
```

If you want to add a box shadow in that color use:

Here you see how a box with a 4 pixel `rgb(190, 140, 104)` colored shadow looks like.

```
.boxshadow{ -moz-box-shadow:4px 4px 4px  
4px rgb(190, 140, 104); -webkit-box-  
shadow:4px 4px 4px 4px rgb(190, 140, 104);  
box-shadow:4px 4px 4px 4px rgb(190, 140,  
104) }
```

# Background

The CSS property to change the background color of an element to YIQ 150.8460, 41.3560, -0.5960 is called "background". The background property can be set on classes, ids or directly on the HTML element.

```
.background, #background, body{  
background: rgb(190, 140, 104) }
```

If only the background color should be changed can be used:

```
.background{ background-color: rgb(190,  
140, 104) }
```

This example shows the color as background, it is applied via the CSS property "background".

To optimize and compress your CSS code, you can use our [online CSS compressor and optimizer](#) based on csstidy. If you want to create a linear or radial gradient as background or border, check our [CSS Gradient Generator](#).

Hey! You found this booklet interesting? Support Converting Colors with the new Membership Option!

The pro membership hides all ads, plus gives you double the colors in the color bucket, and more awesome pro features!

**[Learn more, Memberships starting at \\$2.50/m!](#)**

**Follow me  
on Twitter!**

@ConvertingColor