

# Converting Colors

YIQ(150.8680, 27.0950, 10.0630)

Have a look what the booklet for  
YIQ(150.8680, 27.0950, 10.0630)  
contains.

<b>YIQ(150.8680, 27.0950, 10.0630)</b> .....	3
<b><i>Conversions</i></b> .....	4
<b><i>Details</i></b> .....	6
<b><i>Harmonies</i></b> .....	12
<b><i>Previews</i></b> .....	24
<b><i>Color Blindness Simulation</i></b> .....	28
<b><i>CSS Examples</i></b> .....	31

# Color

**YIQ(150.8680, 27.0950,  
10.0630)**

# Conversions

## Conversions Part 1

Format	Color
Hex	B7898A
RGB	183, 137, 138
RGB Percent	72%, 54%, 54%
CMY	0.2822, 0.4628, 0.4587
CMYK	0.00, 0.25, 0.25, 0.28
HSL	359°, 24%, 63%
HSV	359°, 25%, 72%
XYZ	33.0674, 29.7923, 28.0627
YIQ	150.8680, 27.0950, 10.0630

# Conversions

## Conversions Part 2

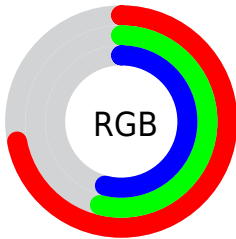
Format	Color
<a href="#">RYB</a>	<a href="#">183, 137, 138</a>
Decimal	<a href="#">12028298</a>
CIELab	<a href="#">61.47, 17.72, 6.30</a>
CIElCh	<a href="#">61, 18.805, 19.570</a>
Yxy	<a href="#">29.7923, 0.3637, 0.3277</a>
Android (android.graphics.Color)	<a href="#">4290218378</a> (0xFFB7898A)
YUV	<a href="#">150.8680, -6.3439, 28.1798</a>
Hunter-Lab	<a href="#">54.5823, 12.6210, 7.7245</a>

# Details

The YIQ color **150.8680, 27.0950, 10.0630** is a light color, and the websafe version is hex **CC9999**. A complement of this color would be **169.1320, -27.0950, -10.0630**, and the grayscale version is **151.0000, -0.0000, 0.0000**.

A 20% lighter version of the original color is **205.6510, 29.2040, 10.3880**, and **99.6720, 24.7110, 9.2150** is the 20% darker color. If you saturate the color by 10%, you get **138.2500, 37.8230, 13.8790**, and if you desaturate by 10%, it is **163.4860, 16.3670, 6.2470**.

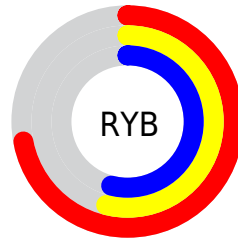
# Distribution



Red (72%)

Green (54%)

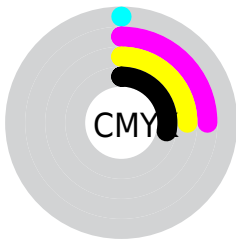
Blue (54%)



Red (72%)

Yellow (54%)

Blue (54%)

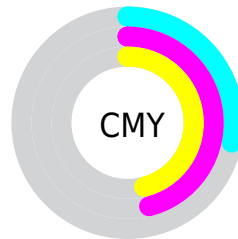


Cyan (0%)

Magenta (25%)

Yellow (25%)

Black (28%)



Cyan (28%)

Magenta (46%)


Yellow (46%)


# Brightness & Saturation Gradients

These gradients show how the YIQ color 150.8680, 27.0950, 10.0630 changes by changing the brightness by 10 percent. The first figure shows a shift by +10% for each color and the second figure -10%.


Similar to the brightness gradients but the following saturation gradients show a change of the YIQ color 150.8680, 27.0950, 10.0630 by changing the saturation by 10% instead.





 150.8680, 27.0950,  
10.0630


 150.8680, 27.0950,  
10.0630


255.0000, -0.0000,  
-0.0000


 124.6830, 26.1780,  
10.1620


 205.6510, 29.2040,  
10.3880


 99.6720, 24.7110,  
9.2150


 229.1770, 21.7310,  
8.1550

 75.1880, 23.1980,  
9.1020

 249.5060, 4.4470,  
2.0070

 52.2910, 21.4100,  
8.4660

 29.9210, 19.5760,  
8.6640

 10.4650, 20.8600,  
7.4200

 0.0000, 0.0000,

0.0000

150.8680, 27.0950,  
10.0630

150.8680, 27.0950,  
10.0630

138.2500, 37.8230,  
13.8790

163.4860, 16.3670,  
6.2470

125.0450, 48.8260,  
18.2180

176.6910, 5.3640,  
1.9080

112.4270, 59.5540,  
22.0340

189.3090, -5.3640,  
-1.9080

99.8090, 70.2820,  
25.8500

201.9270,  
-16.0920, -5.7240

86.7180, 80.9640,  
30.5000

214.4310,  
-26.4990, -9.8510

74.1000, 91.6920,  
34.3160

227.6360,  
-37.5020, -14.1900

■ 61.4820, 102.4200,  
38.1320

■ 233.4720,  
-42.9120, -15.2640

■ 55.1730, 107.7840,  
40.0400

# Harmonies

## Analogous

The Analogous color harmony consists of three colors that are next to each other on the color wheel.



151.3110, 18.6580, 14.2900



150.8680, 27.0950, 10.0630



149.8370, 28.3800, 3.2920

# Triad

The Triadic color harmony groups three colors that are evenly spaced from another and form a triangle on the color wheel.



150.8680, 27.0950, 10.0630



144.5180, -4.9950, -14.1070



146.3360, -27.1890, 2.6590

# Complementary

The Complementary color scheme is a pair of colors which are on the opposite of each other on the color wheel.



150.8680, 27.0950, 10.0630



169.1320, -27.0950, -10.0630

# Split Complementary

Split-complementary colors differ from the complementary color scheme. The scheme consists of three colors, the original color and two neighbors of the complement color.



142.9880, -35.2570, -5.3130



150.8680, 27.0950, 10.0630



142.7210, -21.6840, -14.5160

# Square

The Square scheme is like the rectangle color scheme, but the four colors are evenly spaced on the color wheel.



150.8680, 27.0950, 10.0630



146.8250, 10.3180, -10.7860



141.6690, -33.1010, -11.3490



149.2780, -12.1060, 10.1500



# Rectangle

The Rectangle color scheme consists of four colors that form a rectangle on the color wheel.



150.8680, 27.0950, 10.0630



149.1090, 24.4380, -2.3620



141.6690, -33.1010, -11.3490



144.6020, -30.9940, 0.0300

# Sweetspot

The Sweet Spot groups the original color and five complimentary colors.



150.8680, 27.0950, 10.0630



223.7950, 11.0030, 4.3390



155.4000, 11.4580, 23.6340



111.5880, 7.1520, 2.5440



247.0000, -0.0000, -0.0000



120.0000, -0.0000, -0.0000



# Same Dimension

The Same Dimension uses a secret algorithm to generate beautiful new colors.



150.8680, 27.0950, 10.0630



187.4570, 41.6740, 15.6740



163.0810, 21.6410, -1.2310



85.6910, 5.3640, 1.9080



47.1000, 91.6920, 34.3160



8.4860, 16.3670, 6.2470



# Inverse Universe

The Inverse Universe completely reimagines the original color for something new.



150.8680, 27.0950, 10.0630



187.4570, 41.6740, 15.6740



156.9190, -21.6410, 1.2310



85.6910, 5.3640, 1.9080



47.1000, 91.6920, 34.3160

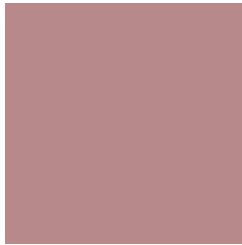


8.4860, 16.3670, 6.2470



# Previews

## White Background



This preview shows how the YIQ color 150.8680, 27.0950, 10.0630 looks on a white background.

## Color Contrast Check

Large Text (above 18pt) WCAG AA ✓ Pass

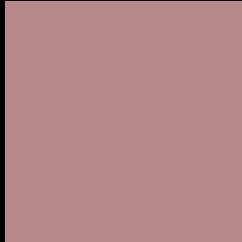
Any Text WCAG AA × Fail

Large Text (above 18pt) WCAG AAA × Fail

Any Text WCAG AAA × Fail



# Black Background



This preview shows how the YIQ color 150.8680, 27.0950, 10.0630 looks on a black background.

## Color Contrast Check

Large Text (above 18pt) WCAG AA ✓ Pass

Any Text WCAG AA ✓ Pass

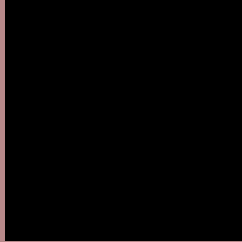
Large Text (above 18pt) WCAG AAA ✓ Pass

Any Text WCAG AAA × Fail

If you want to check with other color combinations, try the [Color Contrast Checker](#).

# YIQ 150.8680, 27.0950, 10.0630

## Background



This preview shows how black text looks on a background with the YIQ color 150.8680, 27.0950, 10.0630.



This preview shows how white text looks on a background with the YIQ color 150.8680, 27.0950,



# Color Blindness Simulation

Color vision deficiency is a very complex topic, and I could not describe the different causes any better than Wikipedia does, so if you want to learn more, you should check out their [article about color blindness](#).

## Dichromacy



### Original Color

150.8680, 27.0950, 10.0630

### Protanopia

148.7400, 3.6680, -0.3960

### Deuteranopia

149.4920, 16.2300, 3.2220



## Tritanopia

151.4920, 25.3980, 13.2860

# Trichromacy



## Original Color

150.8680, 27.0950, 10.0630

## Protanomaly

149.4530, 11.9660, 3.4060

## Deuteranomaly

150.1120, 20.3560, 5.5400

## Tritanomaly

151.1500, 26.3610, 12.3530

# Monochromacy



## Original Color

150.8680, 27.0950, 10.0630

## Achromatopsia

151.0000, -0.0000, 0.0000

## Achromatomaly

151.0830, 10.1320, 3.6040

# CSS Examples

## Text

The CSS property to change the color of the text to YIQ 150.8680, 27.0950, 10.0630 is called "color". The color property can be set on classes, ids or directly on the HTML element.

This example shows how text in the color `rgb(183, 137, 138)` looks like.

```
.text, #text, p{  
    color:rgb(183, 137, 138)  
}
```

If you want to add a text shadow in that color use the text-shadow property, you can generate a text shadow directly with our [CSS Text Shadow Generator](#).

Here you see how black text with a 4 pixel rgb(183, 137, 138) colored shadow looks like.

```
.shadow{ text-shadow: 4px 4px 2px rgb(183, 137, 138) }
```

## Border

The CSS property to change the border of an element to YIQ 150.8680, 27.0950, 10.0630 is called "border". The border property can be set on classes, ids or directly on the HTML element.

This example shows the color as border, it can be applied via the CSS property "border" or "border-color".

```
.border, #border, table{ border:4px solid rgb(183, 137, 138) }
```



If only the border color should be changed use the property `border-color`.

```
.border{ border-color:rgb(183, 137, 138) }
```

If you want to add a box shadow in that color use:

Here you see how a box with a 4 pixel `rgb(183, 137, 138)` colored shadow looks like.

```
.boxshadow{ -moz-box-shadow:4px 4px 4px  
4px rgb(183, 137, 138); -webkit-box-  
shadow:4px 4px 4px 4px rgb(183, 137, 138);  
box-shadow:4px 4px 4px 4px rgb(183, 137,  
138) }
```

# Background

The CSS property to change the background color of an element to YIQ 150.8680, 27.0950, 10.0630 is called "background". The background property can be set on classes, ids or directly on the HTML element.

```
.background, #background, body{  
background: rgb(183, 137, 138) }
```

If only the background color should be changed can be used:

```
.background{ background-color: rgb(183,  
137, 138) }
```

This example shows the color as background, it is applied via the CSS property "background".

To optimize and compress your CSS code, you can use our [online CSS compressor and optimizer](#) based on csstidy. If you want to create a linear or radial gradient as background or border, check our [CSS Gradient Generator](#).

Hey! You found this booklet interesting? Support Converting Colors with the new Membership Option!

The pro membership hides all ads, plus gives you double the colors in the color bucket, and more awesome pro features!

**[Learn more, Memberships starting at \\$2.50/m!](#)**

**Follow me  
on Twitter!**

@ConvertingColor