

Converting Colors

YIQ(151.0620, 40.9880, 6.0760)

Have a look what the booklet for
YIQ(151.0620, 40.9880, 6.0760)
contains.

YIQ(151.0620, 40.9880, 6.0760)	3
<i>Conversions</i>	4
<i>Details</i>	6
<i>Harmonies</i>	12
<i>Previews</i>	24
<i>Color Blindness Simulation</i>	28
<i>CSS Examples</i>	31

Color

**YIQ(151.0620, 40.9880,
6.0760)**

Conversions

Conversions Part 1

Format	Color
Hex	C28874
RGB	194, 136, 116
RGB Percent	76%, 53%, 45%
CMY	0.2391, 0.4667, 0.5449
CMYK	0.00, 0.30, 0.40, 0.24
HSL	15°, 39%, 61%
HSV	15°, 40%, 76%
XYZ	34.2121, 30.3370, 20.5893
YIQ	151.0620, 40.9880, 6.0760

Conversions

Conversions Part 2

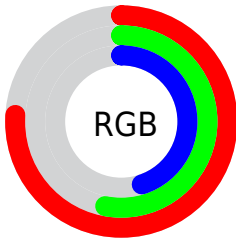
Format	Color
RYB	194, 143, 116
Decimal	12748916
CIELab	61.94, 19.71, 19.59
CIElCh	62, 27.788, 44.830
Yxy	30.3370, 0.4018, 0.3563
Android (android.graphics.Color)	4290938996 (0xFFC28874)
YUV	151.0620, -17.2856, 37.6566
Hunter-Lab	55.0791, 14.4861, 16.3919

Details

The YIQ color **151.0620, 40.9880, 6.0760** is a light color, and the websafe version is hex **CC9999**. A complement of this color would be **158.9380, -40.9880, -6.0760**, and the grayscale version is **151.0000, -0.0000, 0.0000**.

A 20% lighter version of the original color is **206.0300, 44.0140, 6.3020**, and **99.4960, 36.7700, 5.4260** is the 20% darker color. If you saturate the color by 10%, you get **140.6780, 50.9370, 7.4890**, and if you desaturate by 10%, it is **161.4460, 31.0390, 4.6630**.

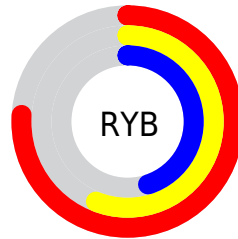
Distribution



Red (76%)

Green (53%)

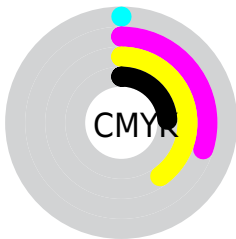
Blue (45%)



Red (76%)

Yellow (56%)

Blue (45%)

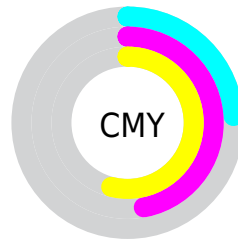


Cyan (0%)

Magenta (30%)

Yellow (40%)

Black (24%)



Cyan (24%)

Magenta (47%)

Yellow (54%)

Brightness & Saturation Gradients

These gradients show how the YIQ color 151.0620, 40.9880, 6.0760 changes by changing the brightness by 10 percent. The first figure shows a shift by +10% for each color and the second figure -10%.

Similar to the brightness gradients but the following saturation gradients show a change of the YIQ color 151.0620, 40.9880, 6.0760 by changing the saturation by 10% instead.

151.0620, 40.9880,
6.0760

151.0620, 40.9880,
6.0760

255.0000, -0.0000,
-0.0000

124.5780, 39.4750,
5.9630

206.0300, 44.0140,
6.3020

99.4960, 36.7700,
5.4260

225.8540, 29.7100,
1.2140

74.7130, 34.6610,
5.1010

246.0690, 12.7470,
-5.2450

51.6310, 31.9560,
4.5640

254.6580, 0.9630,
-0.9330

28.8050, 31.4060,
3.5180

11.0630, 22.0520,
7.8440

0.0000, 0.0000,

0.0000

■ 151.0620, 40.9880,
6.0760

■ 151.0620, 40.9880,
6.0760

■ 140.6780, 50.9370,
7.4890

■ 161.4460, 31.0390,
4.6630

■ 129.5930, 61.4820,
9.1140

■ 172.5310, 20.4940,
3.0380

■ 119.2090, 71.4310,
10.5270

■ 182.9150, 10.5450,
1.6250

■ 108.1240, 81.9760,
12.1520

■ 194.0000, -0.0000,
0.0000

■ 97.7400, 91.9250,
13.5650

■ 204.3840, -9.9490,
-1.4130

■ 87.3560, 101.8740,
14.9780

■ 215.3550,
-20.1730, -3.3490

■ 225.8530,
-30.4430, -4.4510

■ 235.0000,
-35.5310, -11.3630

■ 236.7610,
-36.3560, -12.9320

Harmonies

Analogous

The Analogous color harmony consists of three colors that are next to each other on the color wheel.



152.1300, 38.2810, 16.5930



151.0620, 40.9880, 6.0760



149.4920, 33.4250, -5.5430

Triad

The Triadic color harmony groups three colors that are evenly spaced from another and form a triangle on the color wheel.



151.0620, 40.9880, 6.0760



139.9000, -29.7980, -21.6540



149.6990, -23.4770, 12.4830

Complementary

The Complementary color scheme is a pair of colors which are on the opposite of each other on the color wheel.



151.0620, 40.9880, 6.0760



158.9380, -40.9880, -6.0760

Split Complementary

Split-complementary colors differ from the complementary color scheme. The scheme consists of three colors, the original color and two neighbors of the complement color.



143.6310, -47.1330, 0.6670



151.0620, 40.9880, 6.0760



136.1610, -52.4020, -19.4900

Square

The Square scheme is like the rectangle color scheme, but the four colors are evenly spaced on the color wheel.



151.0620, 40.9880, 6.0760



143.7150, -4.3520, -20.2560



137.0110, -60.4270, -11.7150



152.9150, 2.5180, 20.4540

Rectangle

The Rectangle color scheme consists of four colors that form a rectangle on the color wheel.



151.0620, 40.9880, 6.0760



147.6000, 24.0730, -12.2710



137.0110, -60.4270, -11.7150



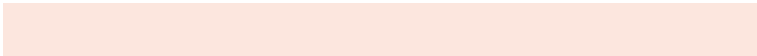
147.9860, -31.7750, 8.6810

Sweetspot

The Sweet Spot groups the original color and five complimentary colors.



151.0620, 40.9880, 6.0760



235.6660, 15.6800, 2.1760



146.0480, 27.5490, 34.8850



117.7300, 9.6280, 1.7240



0.0000, 0.0000, 0.0000



128.0000, -0.0000, -0.0000

Same Dimension

The Same Dimension uses a secret algorithm to generate beautiful new colors.



151.0620, 40.9880, 6.0760



185.3760, 63.5910, 9.4390



173.9550, 30.2630, -14.3210



91.7510, 5.1350, 0.5510



72.2060, 84.6810, 12.6890



14.5630, 17.4680, 2.8120

Inverse Universe

The Inverse Universe completely reimagines the original color for something new.



158.9380, -40.9880, -6.0760



197.6240, -63.5910, -9.4390



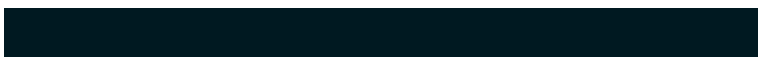
136.6320, -30.5380, 13.7980



92.2490, -5.1350, -0.5510



88.7940, -84.6810, -12.6890



18.4370, -17.4680, -2.8120

Previews

White Background



This preview shows how the YIQ color 151.0620, 40.9880, 6.0760 looks on a white background.

Color Contrast Check

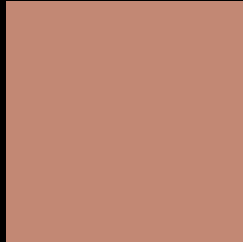
Large Text (above 18pt) WCAG AA × Fail

Any Text WCAG AA × Fail

Large Text (above 18pt) WCAG AAA × Fail

Any Text WCAG AAA × Fail

Black Background



This preview shows how the YIQ color 151.0620, 40.9880, 6.0760 looks on a black background.

Color Contrast Check

Large Text (above 18pt) WCAG AA ✓ Pass

Any Text WCAG AA ✓ Pass

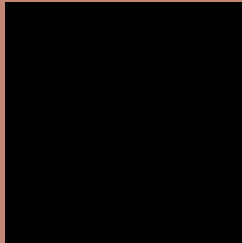
Large Text (above 18pt) WCAG AAA ✓ Pass

Any Text WCAG AAA ✓ Pass

If you want to check with other color combinations, try the [Color Contrast Checker](#).

YIQ 151.0620, 40.9880, 6.0760

Background



This preview shows how black text looks on a background with the YIQ color 151.0620, 40.9880, 6.0760.



This preview shows how white text looks on a background with the YIQ color 151.0620, 40.9880,

Color Blindness Simulation

Color vision deficiency is a very complex topic, and I could not describe the different causes any better than Wikipedia does, so if you want to learn more, you should check out their [article about color blindness](#).

Dichromacy



Original Color

151.0620, 40.9880, 6.0760

Protanopia

149.4990, 14.3520, -6.8000

Deuteranopia

150.2620, 28.3810, -2.2350



Tritanopia

152.2760, 34.9340, 16.6780

Trichromacy



Original Color

151.0620, 40.9880, 6.0760

Protanomaly

150.2230, 24.1170, -2.0510

Deuteranomaly

150.5940, 33.3780, 0.8180

Tritanomaly

151.5380, 36.9520, 13.1440

Monochromacy



Original Color

151.0620, 40.9880, 6.0760

Achromatopsia

151.0000, -0.0000, 0.0000

Achromatomaly

151.3670, 15.0840, 1.9640

CSS Examples

Text

The CSS property to change the color of the text to YIQ 151.0620, 40.9880, 6.0760 is called "color". The color property can be set on classes, ids or directly on the HTML element.

This example shows how text in the color `rgb(194, 136, 116)` looks like.

```
.text, #text, p{  
    color:rgb(194, 136, 116)  
}
```

If you want to add a text shadow in that color use the text-shadow property, you can generate a text shadow directly with our [CSS Text Shadow Generator](#).

Here you see how black text with a 4 pixel rgb(194, 136, 116) colored shadow looks like.

```
.shadow{ text-shadow: 4px 4px 2px rgb(194, 136, 116) }
```

Border

The CSS property to change the border of an element to YIQ 151.0620, 40.9880, 6.0760 is called "border". The border property can be set on classes, ids or directly on the HTML element.

This example shows the color as border, it can be applied via the CSS property "border" or "border-color".

```
.border, #border, table{ border:4px solid rgb(194, 136, 116) }
```


If only the border color should be changed use the property border-color.

```
.border{ border-color:rgb(194, 136, 116) }
```

If you want to add a box shadow in that color use:

Here you see how a box with a 4 pixel rgb(194, 136, 116) colored shadow looks like.

```
.boxshadow{ -moz-box-shadow:4px 4px 4px  
4px rgb(194, 136, 116); -webkit-box-  
shadow:4px 4px 4px 4px rgb(194, 136, 116);  
box-shadow:4px 4px 4px 4px rgb(194, 136,  
116) }
```

Background

The CSS property to change the background color of an element to YIQ 151.0620, 40.9880, 6.0760 is called "background". The background property can be set on classes, ids or directly on the HTML element.

```
.background, #background, body{  
background: rgb(194, 136, 116) }
```

If only the background color should be changed can be used:

```
.background{ background-color: rgb(194,  
136, 116) }
```

This example shows the color as background, it is applied via the CSS property "background".

To optimize and compress your CSS code, you can use our [online CSS compressor and optimizer](#) based on csstidy. If you want to create a linear or radial gradient as background or border, check our [CSS Gradient Generator](#).

Hey! You found this booklet interesting? Support Converting Colors with the new Membership Option!

The pro membership hides all ads, plus gives you double the colors in the color bucket, and more awesome pro features!

[Learn more, Memberships starting at \\$2.50/m!](#)

**Follow me
on Twitter!**

@ConvertingColor