

Converting Colors

YIQ(151.3450, 21.3180, 10.1340)

Have a look what the booklet for
YIQ(151.3450, 21.3180, 10.1340)
contains.

YIQ(151.3450, 21.3180, 10.1340)	3
<i>Conversions</i>	4
<i>Details</i>	6
<i>Harmonies</i>	12
<i>Previews</i>	24
<i>Color Blindness Simulation</i>	28
<i>CSS Examples</i>	31

Color

**YIQ(151.3450, 21.3180,
10.1340)**

Conversions

Conversions Part 1

Format	Color
Hex	B28B91
RGB	178, 139, 145
RGB Percent	70%, 55%, 57%
CMY	0.3019, 0.4549, 0.4313
CMYK	0.00, 0.22, 0.19, 0.30
HSL	351°, 20%, 62%
HSV	351°, 22%, 70%
XYZ	32.7084, 29.9733, 30.8578
YIQ	151.3450, 21.3180, 10.1340

Conversions

Conversions Part 2

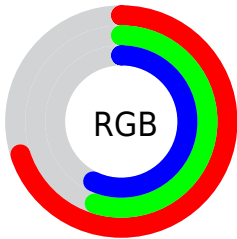
Format	Color
RYB	178, 139, 145
Decimal	11701137
CIELab	61.63, 15.77, 2.48
CIELCh	62, 15.959, 8.926
Yxy	29.9733, 0.3497, 0.3204
Android (android.graphics.Color)	4289891217 (0xFFB28B91)
YUV	151.3450, -3.1281, 23.3764
Hunter-Lab	54.7479, 10.8335, 4.9056

Details

The YIQ color **151.3450, 21.3180, 10.1340** is a light color, and the websafe version is hex **CC9999**. A complement of this color would be **165.6550, -21.3180, -10.1340**, and the grayscale version is **151.0000, -0.0000, 0.0000**.

A 20% lighter version of the original color is **205.9430, 22.5100, 10.5580**, and **100.4480, 19.5300, 9.4980** is the 20% darker color. If you saturate the color by 10%, you get **139.0690, 31.0830, 14.8830**, and if you desaturate by 10%, it is **163.6210, 11.5530, 5.3850**.

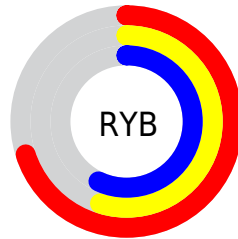
Distribution



Red (70%)

Green (55%)

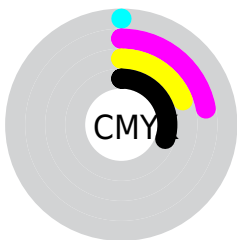
Blue (57%)



Red (70%)

Yellow (55%)

Blue (57%)

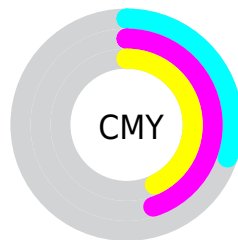


Cyan (0%)

Magenta (22%)

Yellow (19%)

Black (30%)



Cyan (30%)

Magenta (45%)

Yellow (43%)

Brightness & Saturation Gradients

These gradients show how the YIQ color 151.3450, 21.3180, 10.1340 changes by changing the brightness by 10 percent. The first figure shows a shift by +10% for each color and the second figure -10%.

Similar to the brightness gradients but the following saturation gradients show a change of the YIQ color 151.3450, 21.3180, 10.1340 by changing the saturation by 10% instead.

■ 151.3450, 21.3180,
10.1340

■ 151.3450, 21.3180,
10.1340

■ 255.0000, -0.0000,
-0.0000

■ 125.0460, 20.7220,
9.9220

■ 205.9430, 22.5100,
10.5580

■ 100.4480, 19.5300,
9.4980

■ 231.8500, 18.3380,
9.0740

■ 75.8500, 18.3380,
9.0740

■ 251.4780, 1.6500,
3.1380

■ 53.2520, 17.1460,
8.6500

■ 31.3550, 15.3580,
8.0140

■ 9.9810, 19.3470,
7.3070

■ 0.0000, 0.0000,

0.0000

151.3450, 21.3180,
10.1340

151.3450, 21.3180,
10.1340

139.0690, 31.0830,
14.8830

163.6210, 11.5530,
5.3850

126.7930, 40.8480,
19.6320

175.8970, 1.7880,
0.6360

115.1040, 50.3380,
23.8580

187.5860, -7.7020,
-3.5900

102.8280, 60.1030,
28.6070

199.8620,
-17.4670, -8.3390

90.5520, 69.8680,
33.3560

212.1380,
-27.2320, -13.0880

78.2760, 79.6330,
38.1050

224.4140,
-36.9970, -17.8370

■ 66.0000, 89.3980,
42.8540

■ 231.4070,
-44.2870, -17.8790

■ 56.4140, 97.1000,
46.4440

■ 231.9770,
-45.8920, -16.3240

Harmonies

Analogous

The Analogous color harmony consists of three colors that are next to each other on the color wheel.



151.4350, 12.3770, 12.4810



151.3450, 21.3180, 10.1340



150.7380, 24.3450, 4.8330

Triad

The Triadic color harmony groups three colors that are evenly spaced from another and form a triangle on the color wheel.



151.3450, 21.3180, 10.1340



146.1490, 0.5980, -10.8420



145.9400, -26.1340, 0.0580

Complementary

The Complementary color scheme is a pair of colors which are on the opposite of each other on the color wheel.



151.3450, 21.3180, 10.1340



165.6550, -21.3180, -10.1340

Split Complementary

Split-complementary colors differ from the complementary color scheme. The scheme consists of three colors, the original color and two neighbors of the complement color.



143.9840, -29.4340, -6.2180



151.3450, 21.3180, 10.1340



144.3800, -13.2940, -12.3820

Square

The Square scheme is like the rectangle color scheme, but the four colors are evenly spaced on the color wheel.



151.3450, 21.3180, 10.1340



147.9010, 13.1600, -7.2240



143.3880, -24.9400, -10.5720



148.7890, -15.2230, 6.0650

Rectangle

The Rectangle color scheme consists of four colors that form a rectangle on the color wheel.



151.3450, 21.3180, 10.1340



149.6190, 23.0620, 0.5500



143.3880, -24.9400, -10.5720



145.1030, -28.1510, -1.9350

Sweetspot

The Sweet Spot groups the original color and five complimentary colors.



151.3450, 21.3180, 10.1340



221.0120, 8.8940, 4.0140



153.3130, 7.1490, 19.1250



110.8050, 5.0430, 2.2190



245.0000, -0.0000, 0.0000



117.0000, -0.0000, 0.0000

Same Dimension

The Same Dimension uses a secret algorithm to generate beautiful new colors.



151.3450, 21.3180, 10.1340



190.9660, 32.8710, 15.5190



158.2920, 19.6690, 1.4690



82.9190, 4.7220, 2.5300



48.4830, 83.4840, 39.9000



8.2300, 14.2120, 6.7560

Inverse Universe

The Inverse Universe completely reimagines the original color for something new.



151.3450, 21.3180, 10.1340



190.9660, 32.8710, 15.5190



158.7080, -19.6690, -1.4690



82.9190, 4.7220, 2.5300



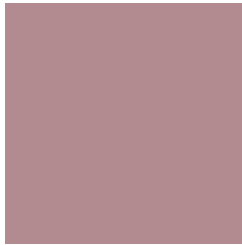
48.4830, 83.4840, 39.9000



8.2300, 14.2120, 6.7560

Previews

White Background



This preview shows how the YIQ color 151.3450, 21.3180, 10.1340 looks on a white background.

Color Contrast Check

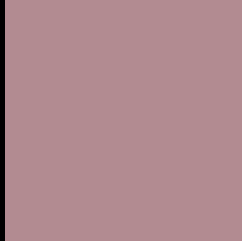
Large Text (above 18pt) WCAG AA ✓ Pass

Any Text WCAG AA ✗ Fail

Large Text (above 18pt) WCAG AAA ✗ Fail

Any Text WCAG AAA ✗ Fail

Black Background



This preview shows how the YIQ color 151.3450, 21.3180, 10.1340 looks on a black background.

Color Contrast Check

Large Text (above 18pt) WCAG AA ✓ Pass

Any Text WCAG AA ✓ Pass

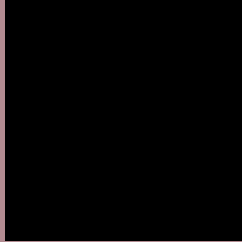
Large Text (above 18pt) WCAG AAA ✓ Pass

Any Text WCAG AAA ✓ Pass

If you want to check with other color combinations, try the [Color Contrast Checker](#).

YIQ 151.3450, 21.3180, 10.1340

Background



This preview shows how black text looks on a background with the YIQ color 151.3450, 21.3180, 10.1340.



This preview shows how white text looks on a background with the YIQ color 151.3450, 21.3180,

Color Blindness Simulation

Color vision deficiency is a very complex topic, and I could not describe the different causes any better than Wikipedia does, so if you want to learn more, you should check out their [article about color blindness](#).

Dichromacy



Original Color

151.3450, 21.3180, 10.1340

Protanopia

149.1250, 1.1460, 1.2580

Deuteranopia

150.2790, 12.5160, 4.4520



Tritanopia

151.5130, 20.9050, 12.1130

Trichromacy



Original Color

151.3450, 21.3180, 10.1340

Protanomaly

150.1260, 8.5730, 4.3250

Deuteranomaly

150.6000, 16.0460, 6.5580

Tritanomaly

151.3990, 21.2260, 11.8020

Monochromacy



Original Color

151.3450, 21.3180, 10.1340

Achromatopsia

151.0000, -0.0000, 0.0000

Achromatomaly

151.4140, 7.7020, 3.5900

CSS Examples

Text

The CSS property to change the color of the text to YIQ 151.3450, 21.3180, 10.1340 is called "color". The color property can be set on classes, ids or directly on the HTML element.

This example shows how text in the color `rgb(178, 139, 145)` looks like.

```
.text, #text, p{  
    color:rgb(178, 139, 145)  
}
```

If you want to add a text shadow in that color use the text-shadow property, you can generate a text shadow directly with our [CSS Text Shadow Generator](#).

Here you see how black text with a 4 pixel rgb(178, 139, 145) colored shadow looks like.

```
.shadow{ text-shadow: 4px 4px 2px rgb(178, 139, 145) }
```

Border

The CSS property to change the border of an element to YIQ 151.3450, 21.3180, 10.1340 is called "border". The border property can be set on classes, ids or directly on the HTML element.

This example shows the color as border, it can be applied via the CSS property "border" or "border-color".

```
.border, #border, table{ border:4px solid rgb(178, 139, 145) }
```


If only the border color should be changed use the property `border-color`.

```
.border{ border-color:rgb(178, 139, 145) }
```

If you want to add a box shadow in that color use:

Here you see how a box with a 4 pixel `rgb(178, 139, 145)` colored shadow looks like.

```
.boxshadow{ -moz-box-shadow:4px 4px 4px  
4px rgb(178, 139, 145); -webkit-box-  
shadow:4px 4px 4px 4px rgb(178, 139, 145);  
box-shadow:4px 4px 4px 4px rgb(178, 139,  
145) }
```

Background

The CSS property to change the background color of an element to YIQ 151.3450, 21.3180, 10.1340 is called "background". The background property can be set on classes, ids or directly on the HTML element.

```
.background, #background, body{  
background: rgb(178, 139, 145) }
```

If only the background color should be changed can be used:

```
.background{ background-color: rgb(178,  
139, 145) }
```

This example shows the color as background, it is applied via the CSS property "background".

To optimize and compress your CSS code, you can use our [online CSS compressor and optimizer](#) based on csstidy. If you want to create a linear or radial gradient as background or border, check our [CSS Gradient Generator](#).

Hey! You found this booklet interesting? Support Converting Colors with the new Membership Option!

The pro membership hides all ads, plus gives you double the colors in the color bucket, and more awesome pro features!

[Learn more, Memberships starting at \\$2.50/m!](#)

**Follow me
on Twitter!**

@ConvertingColor