

Converting Colors

YIQ(151.4530, 38.3290, 4.7050)

Have a look what the booklet for
YIQ(151.4530, 38.3290, 4.7050)
contains.

YIQ(151.4530, 38.3290, 4.7050)	3
<i>Conversions</i>	4
<i>Details</i>	6
<i>Harmonies</i>	12
<i>Previews</i>	24
<i>Color Blindness Simulation</i>	28
<i>CSS Examples</i>	31

Color

**YIQ(151.4530, 38.3290,
4.7050)**

Conversions

Conversions Part 1

Format	Color
Hex	BF8A75
RGB	191, 138, 117
RGB Percent	75%, 54%, 46%
CMY	0.2509, 0.4589, 0.5410
CMYK	0.00, 0.28, 0.39, 0.25
HSL	17°, 37%, 60%
HSV	17°, 39%, 75%
XYZ	33.7918, 30.5360, 20.9559
YIQ	151.4530, 38.3290, 4.7050

Conversions

Conversions Part 2

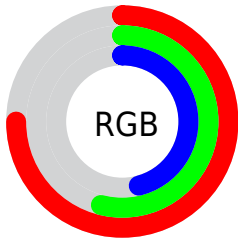
Format	Color
R_{YB}	191, 146, 117
Decimal	12552821
CIE Lab	62.11, 17.51, 19.21
CIE LCh	62, 25.992, 47.643
Yxy	30.5360, 0.3962, 0.3581
Android (android.graphics.Color)	4290742901 (0xFFBF8A75)
YUV	151.4530, -16.9853, 34.6827
Hunter-Lab	55.2594, 12.4510, 16.1972

Details

The YIQ color **151.4530, 38.3290, 4.7050** is a dark color, and the websafe version is hex **CC9999**. A complement of this color would be **156.5470, -38.3290, -4.7050**, and the grayscale version is **152.0000, -0.0000, -0.0000**.

A 20% lighter version of the original color is **206.4210, 41.3550, 4.9310**, and **100.1860, 34.7070, 4.2670** is the 20% darker color. If you saturate the color by 10%, you get **141.0690, 48.2780, 6.1180**, and if you desaturate by 10%, it is **161.8370, 28.3800, 3.2920**.

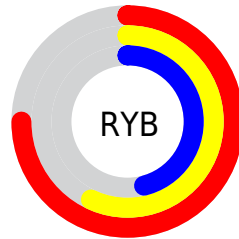
Distribution



Red (75%)

Green (54%)

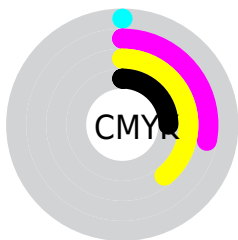
Blue (46%)



Red (75%)

Yellow (57%)

Blue (46%)

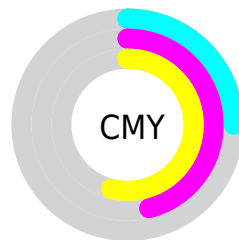


Cyan (0%)

Magenta (28%)

Yellow (39%)

Black (25%)



Cyan (25%)

Magenta (46%)

Yellow (54%)

Brightness & Saturation Gradients

These gradients show how the YIQ color 151.4530, 38.3290, 4.7050 changes by changing the brightness by 10 percent. The first figure shows a shift by +10% for each color and the second figure -10%.

Similar to the brightness gradients but the following saturation gradients show a change of the YIQ color 151.4530, 38.3290, 4.7050 by changing the saturation by 10% instead.

■ 151.4530, 38.3290,
4.7050

■ 151.4530, 38.3290,
4.7050

255.0000, -0.0000,
-0.0000

■ 124.9690, 36.8160,
4.5920

■ 206.4210, 41.3550,
4.9310

■ 100.1860, 34.7070,
4.2670

■ 227.7290, 28.5640,
-0.0440

■ 75.4030, 32.5980,
3.9420

■ 247.3570, 11.8760,
-5.9800

■ 52.3210, 29.8930,
3.4050

254.7720, 0.6420,
-0.6220

■ 29.3810, 29.6640,
2.0480

■ 10.7640, 21.4560,
7.6320

■ 0.0000, 0.0000,

0.0000

151.4530, 38.3290,
4.7050

151.4530, 38.3290,
4.7050

141.0690, 48.2780,
6.1180

161.8370, 28.3800,
3.2920

131.2720, 57.9520,
7.0080

171.6340, 18.7060,
2.4020

120.8880, 67.9010,
8.4210

182.0180, 8.7570,
0.9890

110.5040, 77.8500,
9.8340

192.4020, -1.1920,
-0.4240

100.7070, 87.5240,
10.7240

202.3130,
-11.1870, -1.0030

90.2090, 97.7940,
11.8260

212.6970,
-21.1360, -2.4160

■ 88.8070, 98.9860,
12.2500

■ 223.0810,
-31.0850, -3.8290

■ 231.7550,
-36.2190, -9.9070

■ 235.8640,
-38.1440, -13.5680

Harmonies

Analogous

The Analogous color harmony consists of three colors that are next to each other on the color wheel.



152.5920, 36.8600, 14.8120



151.4530, 38.3290, 4.7050



149.4100, 30.7200, -6.0800

Triad

The Triadic color harmony groups three colors that are evenly spaced from another and form a triangle on the color wheel.



151.4530, 38.3290, 4.7050



140.8400, -29.5690, -20.2970



150.8520, -19.5340, 12.6100

Complementary

The Complementary color scheme is a pair of colors which are on the opposite of each other on the color wheel.



151.4530, 38.3290, 4.7050



156.5470, -38.3290, -4.7050

Split Complementary

Split-complementary colors differ from the complementary color scheme. The scheme consists of three colors, the original color and two neighbors of the complement color.



145.2080, -41.4480, 2.2640



151.4530, 38.3290, 4.7050



138.4820, -48.8720, -17.3840

Square

The Square scheme is like the rectangle color scheme, but the four colors are evenly spaced on the color wheel.



151.4530, 38.3290, 4.7050



144.4590, -6.5070, -19.7470



139.3000, -53.8710, -9.3830



153.6440, 4.7190, 19.1110

Rectangle

The Rectangle color scheme consists of four colors that form a rectangle on the color wheel.



151.4530, 38.3290, 4.7050



148.6320, 21.0470, -12.4970



139.3000, -53.8710, -9.3830



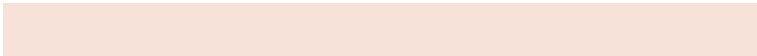
148.8510, -26.9610, 9.5430

Sweetspot

The Sweet Spot groups the original color and five complimentary colors.



151.4530, 38.3290, 4.7050



231.3670, 15.0840, 1.9640



145.2820, 26.7700, 32.4820



115.3170, 9.3530, 1.2010



252.0000, 0.0000, 0.0000



125.0000, 0.0000, 0.0000

Same Dimension

The Same Dimension uses a secret algorithm to generate beautiful new colors.



151.4530, 38.3290, 4.7050



186.5710, 58.5480, 7.2200



172.5850, 28.4290, -14.1230



89.4520, 4.5390, 0.3390



73.6570, 81.7930, 9.9610



14.5520, 16.0010, 1.8650

Inverse Universe

The Inverse Universe completely reimagines the original color for something new.



156.5470, -38.3290, -4.7050



194.4290, -58.5480, -7.2200



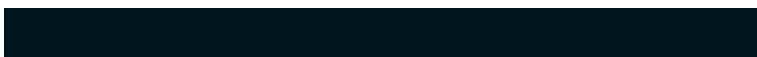
135.4150, -28.4290, 14.1230



90.1350, -4.8140, -0.8620



84.3430, -81.7930, -9.9610



16.4480, -16.0010, -1.8650

Previews

White Background



This preview shows how the YIQ color 151.4530, 38.3290, 4.7050 looks on a white background.

Color Contrast Check

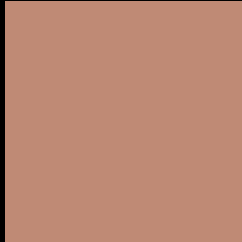
Large Text (above 18pt) WCAG AA × Fail

Any Text WCAG AA × Fail

Large Text (above 18pt) WCAG AAA × Fail

Any Text WCAG AAA × Fail

Black Background



This preview shows how the YIQ color 151.4530, 38.3290, 4.7050 looks on a black background.

Color Contrast Check

Large Text (above 18pt) WCAG AA ✓ Pass

Any Text WCAG AA ✓ Pass

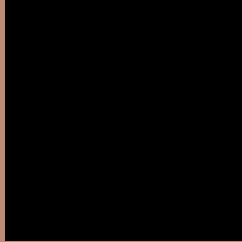
Large Text (above 18pt) WCAG AAA ✓ Pass

Any Text WCAG AAA ✓ Pass

If you want to check with other color combinations, try the [Color Contrast Checker](#).

YIQ 151.4530, 38.3290, 4.7050

Background



This preview shows how black text looks on a background with the YIQ color 151.4530, 38.3290, 4.7050.



This preview shows how white text looks on a background with the YIQ color 151.4530, 38.3290,

4.7050.

Color Blindness Simulation

Color vision deficiency is a very complex topic, and I could not describe the different causes any better than Wikipedia does, so if you want to learn more, you should check out their [article about color blindness](#).

Dichromacy



Original Color

151.4530, 38.3290, 4.7050

Protanopia

149.6130, 14.0310, -6.4890

Deuteranopia

150.6750, 28.6560, -1.7120



Tritanopia

153.0800, 32.5500, 15.8300

Trichromacy



Original Color

151.4530, 38.3290, 4.7050

Protanomaly

150.6250, 22.9250, -2.4750

Deuteranomaly

150.9960, 32.1860, 0.3940

Tritanomaly

152.2280, 34.8890, 11.9850

Monochromacy



Original Color

151.4530, 38.3290, 4.7050

Achromatopsia

151.0000, -0.0000, 0.0000

Achromatomaly

151.1820, 14.1670, 2.0630

CSS Examples

Text

The CSS property to change the color of the text to YIQ 151.4530, 38.3290, 4.7050 is called "color". The color property can be set on classes, ids or directly on the HTML element.

This example shows how text in the color `rgb(191, 138, 117)` looks like.

```
.text, #text, p{  
    color:rgb(191, 138, 117)  
}
```

If you want to add a text shadow in that color use the text-shadow property, you can generate a text shadow directly with our [CSS Text Shadow Generator](#).

Here you see how black text with a 4 pixel rgb(191, 138, 117) colored shadow looks like.

```
.shadow{ text-shadow: 4px 4px 2px rgb(191, 138, 117) }
```

Border

The CSS property to change the border of an element to YIQ 151.4530, 38.3290, 4.7050 is called "border". The border property can be set on classes, ids or directly on the HTML element.

This example shows the color as border, it can be applied via the CSS property "border" or "border-color".

```
.border, #border, table{ border:4px solid rgb(191, 138, 117) }
```


If only the border color should be changed use the property `border-color`.

```
.border{ border-color:rgb(191, 138, 117) }
```

If you want to add a box shadow in that color use:

Here you see how a box with a 4 pixel `rgb(191, 138, 117)` colored shadow looks like.

```
.boxshadow{ -moz-box-shadow:4px 4px 4px  
4px rgb(191, 138, 117); -webkit-box-  
shadow:4px 4px 4px 4px rgb(191, 138, 117);  
box-shadow:4px 4px 4px 4px rgb(191, 138,  
117) }
```

Background

The CSS property to change the background color of an element to YIQ 151.4530, 38.3290, 4.7050 is called "background". The background property can be set on classes, ids or directly on the HTML element.

```
.background, #background, body{  
background: rgb(191, 138, 117) }
```

If only the background color should be changed can be used:

```
.background{ background-color: rgb(191,  
138, 117) }
```

This example shows the color as background, it is applied via the CSS property "background".

To optimize and compress your CSS code, you can use our [online CSS compressor and optimizer](#) based on csstidy. If you want to create a linear or radial gradient as background or border, check our [CSS Gradient Generator](#).

Hey! You found this booklet interesting? Support Converting Colors with the new Membership Option!

The pro membership hides all ads, plus gives you double the colors in the color bucket, and more awesome pro features!

[Learn more, Memberships starting at \\$2.50/m!](#)

**Follow me
on Twitter!**

@ConvertingColor