

Converting Colors

YIQ(151.5690, 26.4990, 9.8510)

Have a look what the booklet for
YIQ(151.5690, 26.4990, 9.8510)
contains.

YIQ(151.5690, 26.4990, 9.8510)	3
<i>Conversions</i>	4
<i>Details</i>	6
<i>Harmonies</i>	12
<i>Previews</i>	24
<i>Color Blindness Simulation</i>	28
<i>CSS Examples</i>	31

Color

**YIQ(151.5690, 26.4990,
9.8510)**

Conversions

Conversions Part 1

Format	Color
Hex	B78A8B
RGB	183, 138, 139
RGB Percent	72%, 54%, 55%
CMY	0.2822, 0.4589, 0.4548
CMYK	0.00, 0.25, 0.24, 0.28
HSL	359°, 24%, 63%
HSV	359°, 25%, 72%
XYZ	33.2829, 30.1070, 28.4933
YIQ	151.5690, 26.4990, 9.8510

Conversions

Conversions Part 2

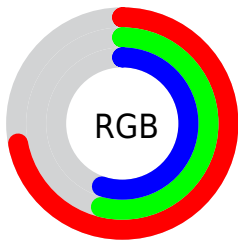
Format	Color
RYB	183, 138, 139
Decimal	12028555
CIELab	61.75, 17.31, 6.12
CIELCh	62, 18.359, 19.472
Yxy	30.1070, 0.3622, 0.3277
Android (android.graphics.Color)	4290218635 (0xFFB78A8B)
YUV	151.5690, -6.1965, 27.5650
Hunter-Lab	54.8699, 12.2520, 7.6203

Details

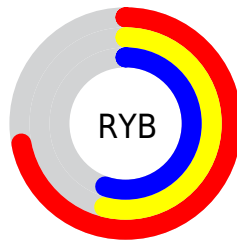
The YIQ color **151.5690, 26.4990, 9.8510** is a light color, and the websafe version is hex **CC9999**. A complement of this color would be **169.4310, -26.4990, -9.8510**, and the grayscale version is **152.0000, -0.0000, -0.0000**.

A 20% lighter version of the original color is **206.3520, 28.6080, 10.1760**, and **100.3730, 24.1150, 9.0030** is the 20% darker color. If you saturate the color by 10%, you get **138.9510, 37.2270, 13.6670**, and if you desaturate by 10%, it is **164.1870, 15.7710, 6.0350**.

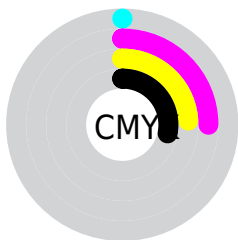
Distribution



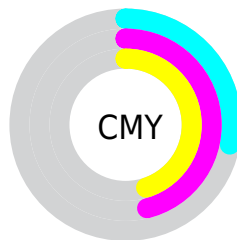
- Red (72%)
- Green (54%)
- Blue (55%)



- Red (72%)
- Yellow (54%)
- Blue (55%)



- Cyan (0%)
- Magenta (25%)
- Yellow (24%)
- Black (28%)



- Cyan (28%)
- Magenta (46%)
- Yellow (45%)

Brightness & Saturation Gradients

These gradients show how the YIQ color 151.5690, 26.4990, 9.8510 changes by changing the brightness by 10 percent. The first figure shows a shift by +10% for each color and the second figure -10%.

Similar to the brightness gradients but the following saturation gradients show a change of the YIQ color 151.5690, 26.4990, 9.8510 by changing the saturation by 10% instead.

151.5690, 26.4990,
9.8510

151.5690, 26.4990,
9.8510

255.0000, -0.0000,
-0.0000

125.3840, 25.5820,
9.9500

206.3520, 28.6080,
10.1760

100.3730, 24.1150,
9.0030

230.4650, 20.8600,
7.4200

75.8890, 22.6020,
8.8900

250.2070, 3.8510,
1.7950

52.9920, 20.8140,
8.2540

30.5080, 19.3010,
8.1410

10.4650, 20.8600,
7.4200

0.0000, 0.0000,

0.0000

151.5690, 26.4990,
9.8510

151.5690, 26.4990,
9.8510

138.9510, 37.2270,
13.6670

164.1870, 15.7710,
6.0350

125.7460, 48.2300,
18.0060

177.3920, 4.7680,
1.6960

113.1280, 58.9580,
21.8220

190.0100, -5.9600,
-2.1200

100.6240, 69.3650,
25.9490

202.6280,
-16.6880, -5.9360

87.4190, 80.3680,
30.2880

215.1320,
-27.0950, -10.0630

74.8010, 91.0960,
34.1040

228.3370,
-38.0980, -14.4020

■ 62.1830, 101.8240,
37.9200

■ 233.4720,
-42.9120, -15.2640

■ 55.1730, 107.7840,
40.0400

Harmonies

Analogous

The Analogous color harmony consists of three colors that are next to each other on the color wheel.



152.0120, 18.0620, 14.0780



151.5690, 26.4990, 9.8510



150.5380, 27.7840, 3.0800

Triad

The Triadic color harmony groups three colors that are evenly spaced from another and form a triangle on the color wheel.



151.5690, 26.4990, 9.8510



145.6320, -5.3160, -13.7960



146.6350, -26.5930, 2.8710

Complementary

The Complementary color scheme is a pair of colors which are on the opposite of each other on the color wheel.



151.5690, 26.4990, 9.8510



169.4310, -26.4990, -9.8510

Split Complementary

Split-complementary colors differ from the complementary color scheme. The scheme consists of three colors, the original color and two neighbors of the complement color.



143.5860, -34.0650, -4.8890



151.5690, 26.4990, 9.8510



143.4330, -20.8130, -13.7810

Square

The Square scheme is like the rectangle color scheme, but the four colors are evenly spaced on the color wheel.



151.5690, 26.4990, 9.8510



146.9390, 9.9970, -10.4750



142.2670, -31.9090, -10.9250



149.8650, -12.3810, 9.6270

Rectangle

The Rectangle color scheme consists of four colors that form a rectangle on the color wheel.



151.5690, 26.4990, 9.8510



149.5220, 24.7130, -1.8390



142.2670, -31.9090, -10.9250



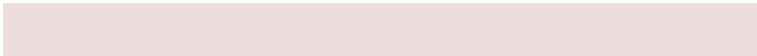
145.7870, -30.0770, -0.0690

Sweetspot

The Sweet Spot groups the original color and five complimentary colors.



151.5690, 26.4990, 9.8510



225.7840, 9.5360, 3.3920



156.2860, 11.7790, 23.3230



112.9900, 5.9600, 2.1200



247.0000, -0.0000, -0.0000



120.0000, -0.0000, -0.0000

Same Dimension

The Same Dimension uses a secret algorithm to generate beautiful new colors.



151.5690, 26.4990, 9.8510



187.4570, 41.6740, 15.6740



163.7820, 21.0450, -1.4430



85.6910, 5.3640, 1.9080



47.1000, 91.6920, 34.3160



8.4860, 16.3670, 6.2470

Inverse Universe

The Inverse Universe completely reimagines the original color for something new.



151.5690, 26.4990, 9.8510



187.4570, 41.6740, 15.6740



157.2180, -21.0450, 1.4430



85.6910, 5.3640, 1.9080



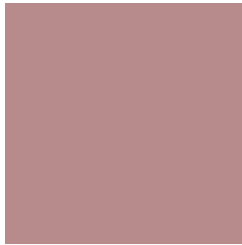
47.1000, 91.6920, 34.3160



8.4860, 16.3670, 6.2470

Previews

White Background



This preview shows how the YIQ color 151.5690, 26.4990, 9.8510 looks on a white background.

Color Contrast Check

Large Text (above 18pt) WCAG AA × Fail

Any Text WCAG AA × Fail

Large Text (above 18pt) WCAG AAA × Fail

Any Text WCAG AAA × Fail

Black Background



This preview shows how the YIQ color 151.5690, 26.4990, 9.8510 looks on a black background.

Color Contrast Check

Large Text (above 18pt) WCAG AA ✓ Pass

Any Text WCAG AA ✓ Pass

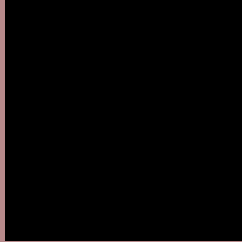
Large Text (above 18pt) WCAG AAA ✓ Pass

Any Text WCAG AAA ✓ Pass

If you want to check with other color combinations, try the [Color Contrast Checker](#).

YIQ 151.5690, 26.4990, 9.8510

Background



This preview shows how black text looks on a background with the YIQ color 151.5690, 26.4990, 9.8510.



This preview shows how white text looks on a background with the YIQ color 151.5690, 26.4990,

Color Blindness Simulation

Color vision deficiency is a very complex topic, and I could not describe the different causes any better than Wikipedia does, so if you want to learn more, you should check out their [article about color blindness](#).

Dichromacy



Original Color

151.5690, 26.4990, 9.8510

Protanopia

149.7400, 3.6680, -0.3960

Deuteranopia

150.4920, 16.2300, 3.2220



Tritanopia

152.1930, 24.8020, 13.0740

Trichromacy



Original Color

151.5690, 26.4990, 9.8510

Protanomaly

150.4530, 11.9660, 3.4060

Deuteranomaly

150.8130, 19.7600, 5.3280

Tritanomaly

151.8510, 25.7650, 12.1410

Monochromacy



Original Color

151.5690, 26.4990, 9.8510

Achromatopsia

152.0000, -0.0000, -0.0000

Achromatomaly

151.7840, 9.5360, 3.3920

CSS Examples

Text

The CSS property to change the color of the text to YIQ 151.5690, 26.4990, 9.8510 is called "color". The color property can be set on classes, ids or directly on the HTML element.

This example shows how text in the color `rgb(183, 138, 139)` looks like.

```
.text, #text, p{  
    color:rgb(183, 138, 139)  
}
```

If you want to add a text shadow in that color use the text-shadow property, you can generate a text shadow directly with our [CSS Text Shadow Generator](#).

Here you see how black text with a 4 pixel rgb(183, 138, 139) colored shadow looks like.

```
.shadow{ text-shadow: 4px 4px 2px rgb(183, 138, 139) }
```

Border

The CSS property to change the border of an element to YIQ 151.5690, 26.4990, 9.8510 is called "border". The border property can be set on classes, ids or directly on the HTML element.

This example shows the color as border, it can be applied via the CSS property "border" or "border-color".

```
.border, #border, table{ border:4px solid rgb(183, 138, 139) }
```


If only the border color should be changed use the property `border-color`.

```
.border{ border-color:rgb(183, 138, 139) }
```

If you want to add a box shadow in that color use:

Here you see how a box with a 4 pixel `rgb(183, 138, 139)` colored shadow looks like.

```
.boxshadow{ -moz-box-shadow:4px 4px 4px  
4px rgb(183, 138, 139); -webkit-box-  
shadow:4px 4px 4px 4px rgb(183, 138, 139);  
box-shadow:4px 4px 4px 4px rgb(183, 138,  
139) }
```

Background

The CSS property to change the background color of an element to YIQ 151.5690, 26.4990, 9.8510 is called "background". The background property can be set on classes, ids or directly on the HTML element.

```
.background, #background, body{  
background: rgb(183, 138, 139) }
```

If only the background color should be changed can be used:

```
.background{ background-color: rgb(183,  
138, 139) }
```

This example shows the color as background, it is applied via the CSS property "background".

To optimize and compress your CSS code, you can use our [online CSS compressor and optimizer](#) based on csstidy. If you want to create a linear or radial gradient as background or border, check our [CSS Gradient Generator](#).

Hey! You found this booklet interesting? Support Converting Colors with the new Membership Option!

The pro membership hides all ads, plus gives you double the colors in the color bucket, and more awesome pro features!

[Learn more, Memberships starting at \\$2.50/m!](#)

**Follow me
on Twitter!**

@ConvertingColor