

Converting Colors

YIQ(151.5870, 35.2560, 10.8400)

Have a look what the booklet for
YIQ(151.5870, 35.2560, 10.8400)
contains.

YIQ(151.5870, 35.2560, 10.8400)	3
<i>Conversions</i>	4
<i>Details</i>	6
<i>Harmonies</i>	12
<i>Previews</i>	24
<i>Color Blindness Simulation</i>	28
<i>CSS Examples</i>	31

Color

**YIQ(151.5870, 35.2560,
10.8400)**

Conversions

Conversions Part 1

Format	Color
Hex	C08783
RGB	192, 135, 131
RGB Percent	75%, 53%, 51%
CMY	0.2469, 0.4707, 0.4861
CMYK	0.00, 0.30, 0.32, 0.25
HSL	4°, 33%, 63%
HSV	4°, 32%, 75%
XYZ	34.5067, 30.1718, 25.4907
YIQ	151.5870, 35.2560, 10.8400

Conversions

Conversions Part 2

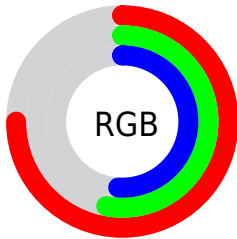
Format	Color
RYB	192, 135, 131
Decimal	12617603
CIELab	61.80, 21.34, 10.88
CIELCh	62, 23.949, 27.013
Yxy	30.1718, 0.3827, 0.3346
Android (android.graphics.Color)	4290807683 (0xFFC08783)
YUV	151.5870, -10.1494, 35.4422
Hunter-Lab	54.9289, 16.0092, 10.9356

Details

The YIQ color **151.5870, 35.2560, 10.8400** is a light color, and the websafe version is hex **CC9999**. A complement of this color would be **171.4130, -35.2560, -10.8400**, and the grayscale version is **152.0000, -0.0000, -0.0000**.

A 20% lighter version of the original color is **206.6690, 37.9610, 11.3770**, and **100.2060, 31.9550, 10.0910** is the 20% darker color. If you saturate the color by 10%, you get **138.8550, 46.3050, 14.3450**, and if you desaturate by 10%, it is **164.3190, 24.2070, 7.3350**.

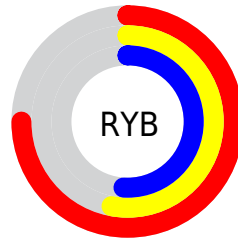
Distribution



Red (75%)

Green (53%)

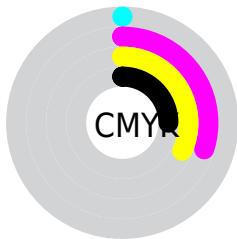
Blue (51%)



Red (75%)

Yellow (53%)

Blue (51%)

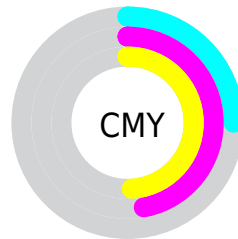


Cyan (0%)

Magenta (30%)

Yellow (32%)

Black (25%)



Cyan (25%)

Magenta (47%)

Yellow (49%)

Brightness & Saturation Gradients

These gradients show how the YIQ color 151.5870, 35.2560, 10.8400 changes by changing the brightness by 10 percent. The first figure shows a shift by +10% for each color and the second figure -10%.

Similar to the brightness gradients but the following saturation gradients show a change of the YIQ color 151.5870, 35.2560, 10.8400 by changing the saturation by 10% instead.

■ 151.5870, 35.2560,
10.8400

■ 151.5870, 35.2560,
10.8400

255.0000, -0.0000,
-0.0000

■ 125.1030, 33.7430,
10.7270

■ 206.6690, 37.9610,
11.3770

■ 100.2060, 31.9550,
10.0910

■ 227.2050, 24.5280,
7.0240

■ 75.4230, 29.8460,
9.7660

■ 247.4200, 7.5650,
0.5650

■ 51.9390, 28.3330,
9.6530

■ 29.1560, 26.2240,
9.3280

■ 11.6610, 23.2440,
8.2680

■ 0.0000, 0.0000,

0.0000

151.5870, 35.2560,
10.8400

151.5870, 35.2560,
10.8400

138.8550, 46.3050,
14.3450

164.3190, 24.2070,
7.3350

126.1230, 57.3540,
17.8500

177.0510, 13.1580,
3.8300

113.2770, 68.7240,
21.0440

189.8970, 1.7880,
0.6360

100.5450, 79.7730,
24.5490

202.6290, -9.2610,
-2.8690

87.8130, 90.8220,
28.0540

215.3610,
-20.3100, -6.3740

75.0810, 101.8710,
31.5590

228.0930,
-31.3590, -9.8790

■ 64.4520, 111.1320,
34.4280

■ 236.1630,
-37.5480, -13.3560

Harmonies

Analogous

The Analogous color harmony consists of three colors that are next to each other on the color wheel.



152.4970, 27.0020, 17.2580



151.5870, 35.2560, 10.8400



150.1920, 34.5700, 1.2420

Triad

The Triadic color harmony groups three colors that are evenly spaced from another and form a triangle on the color wheel.



151.5870, 35.2560, 10.8400



143.5770, -12.6510, -18.5310



146.8780, -31.5910, 5.3450

Complementary

The Complementary color scheme is a pair of colors which are on the opposite of each other on the color wheel.



151.5870, 35.2560, 10.8400



171.4130, -35.2560, -10.8400

Split Complementary

Split-complementary colors differ from the complementary color scheme. The scheme consists of three colors, the original color and two neighbors of the complement color.



141.8280, -46.4900, -5.4820



151.5870, 35.2560, 10.8400



140.4530, -32.7330, -18.0210

Square

The Square scheme is like the rectangle color scheme, but the four colors are evenly spaced on the color wheel.



151.5870, 35.2560, 10.8400



146.1080, 7.8430, -15.4930



139.3730, -46.9470, -13.7230



151.2830, -10.5020, 14.1220

Rectangle

The Rectangle color scheme consists of four colors that form a rectangle on the color wheel.



151.5870, 35.2560, 10.8400



149.1540, 28.5650, -5.5710



139.3730, -46.9470, -13.7230



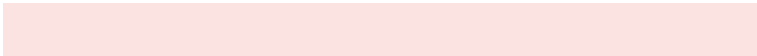
144.9480, -37.7800, 1.8680

Sweetspot

The Sweet Spot groups the original color and five complimentary colors.



151.5870, 35.2560, 10.8400



233.6490, 14.3500, 4.2540



155.8510, 17.7380, 30.9700



115.0720, 8.6650, 2.6570



252.0000, 0.0000, 0.0000



125.0000, 0.0000, 0.0000

Same Dimension

The Same Dimension uses a secret algorithm to generate beautiful new colors.



151.5870, 35.2560, 10.8400



186.9270, 54.9700, 17.0020



169.1970, 27.0060, -4.8500



90.5770, 5.6850, 1.5970



54.0090, 93.2060, 28.9020



11.0410, 19.1180, 5.9500

Inverse Universe

The Inverse Universe completely reimagines the original color for something new.



171.4130, -35.2560, -10.8400



218.0730, -54.9700, -17.0020



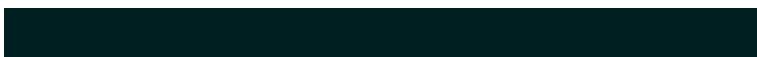
153.8030, -27.0060, 4.8500



93.4230, -5.6850, -1.5970



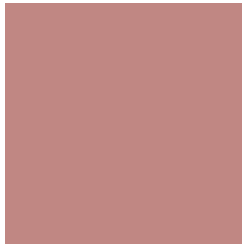
106.4040, -92.9310, -28.3790



21.9590, -19.1180, -5.9500

Previews

White Background



This preview shows how the YIQ color 151.5870, 35.2560, 10.8400 looks on a white background.

Color Contrast Check

Large Text (above 18pt) WCAG AA × Fail

Any Text WCAG AA × Fail

Large Text (above 18pt) WCAG AAA × Fail

Any Text WCAG AAA × Fail

Black Background



This preview shows how the YIQ color 151.5870, 35.2560, 10.8400 looks on a black background.

Color Contrast Check

Large Text (above 18pt) WCAG AA ✓ Pass

Any Text WCAG AA ✓ Pass

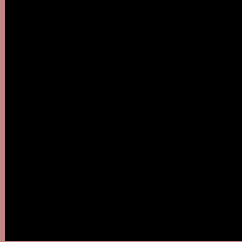
Large Text (above 18pt) WCAG AAA ✓ Pass

Any Text WCAG AAA ✓ Pass

If you want to check with other color combinations, try the [Color Contrast Checker](#).

YIQ 151.5870, 35.2560, 10.8400

Background



This preview shows how black text looks on a background with the YIQ color 151.5870, 35.2560, 10.8400.



This preview shows how white text looks on a background with the YIQ color 151.5870, 35.2560,

10.8400.

Color Blindness Simulation

Color vision deficiency is a very complex topic, and I could not describe the different causes any better than Wikipedia does, so if you want to learn more, you should check out their [article about color blindness](#).

Dichromacy



Original Color

151.5870, 35.2560, 10.8400

Protanopia

149.5400, 7.1070, -2.1490

Deuteranopia

150.3630, 20.9070, 1.0590



Tritanopia

152.0800, 32.5500, 15.8300

Trichromacy



Original Color

151.5870, 35.2560, 10.8400

Protanomaly

150.1500, 17.1930, 2.2890

Deuteranomaly

151.1080, 26.1790, 4.6350

Tritanomaly

152.2110, 33.5590, 14.0630

Monochromacy



Original Color

151.5870, 35.2560, 10.8400

Achromatopsia

152.0000, -0.0000, -0.0000

Achromatomaly

152.0510, 13.1580, 3.8300

CSS Examples

Text

The CSS property to change the color of the text to YIQ 151.5870, 35.2560, 10.8400 is called "color". The color property can be set on classes, ids or directly on the HTML element.

This example shows how text in the color `rgb(192, 135, 131)` looks like.

```
.text, #text, p{  
    color:rgb(192, 135, 131)  
}
```

If you want to add a text shadow in that color use the text-shadow property, you can generate a text shadow directly with our [CSS Text Shadow Generator](#).

Here you see how black text with a 4 pixel rgb(192, 135, 131) colored shadow looks like.

```
.shadow{ text-shadow: 4px 4px 2px rgb(192, 135, 131) }
```

Border

The CSS property to change the border of an element to YIQ 151.5870, 35.2560, 10.8400 is called "border". The border property can be set on classes, ids or directly on the HTML element.

This example shows the color as border, it can be applied via the CSS property "border" or "border-color".

```
.border, #border, table{ border:4px solid rgb(192, 135, 131) }
```


If only the border color should be changed use the property `border-color`.

```
.border{ border-color:rgb(192, 135, 131) }
```

If you want to add a box shadow in that color use:

Here you see how a box with a 4 pixel `rgb(192, 135, 131)` colored shadow looks like.

```
.boxshadow{ -moz-box-shadow:4px 4px 4px  
4px rgb(192, 135, 131); -webkit-box-  
shadow:4px 4px 4px 4px rgb(192, 135, 131);  
box-shadow:4px 4px 4px 4px rgb(192, 135,  
131) }
```

Background

The CSS property to change the background color of an element to YIQ 151.5870, 35.2560, 10.8400 is called "background". The background property can be set on classes, ids or directly on the HTML element.

```
.background, #background, body{  
background: rgb(192, 135, 131) }
```

If only the background color should be changed can be used:

```
.background{ background-color: rgb(192,  
135, 131) }
```

This example shows the color as background, it is applied via the CSS property "background".

To optimize and compress your CSS code, you can use our [online CSS compressor and optimizer](#) based on csstidy. If you want to create a linear or radial gradient as background or border, check our [CSS Gradient Generator](#).

Hey! You found this booklet interesting? Support Converting Colors with the new Membership Option!

The pro membership hides all ads, plus gives you double the colors in the color bucket, and more awesome pro features!

[Learn more, Memberships starting at \\$2.50/m!](#)

**Follow me
on Twitter!**

@ConvertingColor