

Converting Colors

YIQ(151.6810, 37.6870, 5.3270)

Have a look what the booklet for
YIQ(151.6810, 37.6870, 5.3270)
contains.

YIQ(151.6810, 37.6870, 5.3270)	3
<i>Conversions</i>	4
<i>Details</i>	6
<i>Harmonies</i>	12
<i>Previews</i>	24
<i>Color Blindness Simulation</i>	28
<i>CSS Examples</i>	31

Color

**YIQ(151.6810, 37.6870,
5.3270)**

Conversions

Conversions Part 1

Format	Color
Hex	BF8A77
RGB	191, 138, 119
RGB Percent	75%, 54%, 47%
CMY	0.2509, 0.4589, 0.5332
CMYK	0.00, 0.28, 0.38, 0.25
HSL	16°, 36%, 61%
HSV	16°, 38%, 75%
XYZ	33.9108, 30.5836, 21.5819
YIQ	151.6810, 37.6870, 5.3270

Conversions

Conversions Part 2

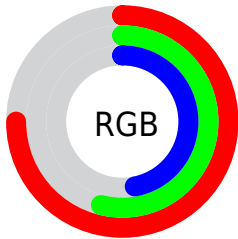
Format	Color
RYB	191, 145, 119
Decimal	12552823
CIELab	62.15, 17.75, 18.14
CIElCh	62, 25.380, 45.616
Yxy	30.5836, 0.3940, 0.3553
Android (android.graphics.Color)	4290742903 (0xFFBF8A77)
YUV	151.6810, -16.1117, 34.4828
Hunter-Lab	55.3025, 12.6746, 15.5737

Details

The YIQ color **151.6810, 37.6870, 5.3270** is a dark color, and the websafe version is hex **CC9999**. A complement of this color would be **158.3190, -37.6870, -5.3270**, and the grayscale version is **152.0000, -0.0000, -0.0000**.

A 20% lighter version of the original color is **206.6490, 40.7130, 5.5530**, and **100.3000, 34.3860, 4.5780** is the 20% darker color. If you saturate the color by 10%, you get **141.2970, 47.6360, 6.7400**, and if you desaturate by 10%, it is **162.0650, 27.7380, 3.9140**.

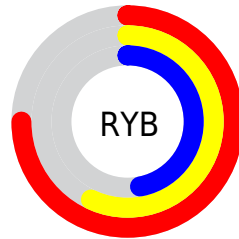
Distribution



Red (75%)

Green (54%)

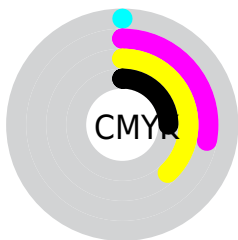
Blue (47%)



Red (75%)

Yellow (57%)

Blue (47%)

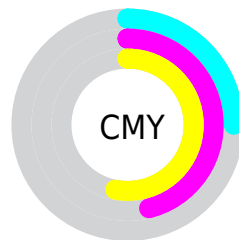


Cyan (0%)

Magenta (28%)

Yellow (38%)

Black (25%)



Cyan (25%)

Magenta (46%)

Yellow (53%)

Brightness & Saturation Gradients

These gradients show how the YIQ color 151.6810, 37.6870, 5.3270 changes by changing the brightness by 10 percent. The first figure shows a shift by +10% for each color and the second figure -10%.

Similar to the brightness gradients but the following saturation gradients show a change of the YIQ color 151.6810, 37.6870, 5.3270 by changing the saturation by 10% instead.

■ 151.6810, 37.6870,
5.3270

■ 151.6810, 37.6870,
5.3270

255.0000, -0.0000,
-0.0000

■ 125.1970, 36.1740,
5.2140

■ 206.6490, 40.7130,
5.5530

■ 100.4140, 34.0650,
4.8890

■ 228.0710, 27.6010,
0.8890

■ 75.6310, 31.9560,
4.5640

■ 247.6990, 10.9130,
-5.0470

■ 52.5490, 29.2510,
4.0270

■ 29.4950, 29.3430,
2.3590

■ 10.7640, 21.4560,
7.6320

■ 0.0000, 0.0000,

0.0000

■ 151.6810, 37.6870,
5.3270

■ 151.6810, 37.6870,
5.3270

■ 141.2970, 47.6360,
6.7400

■ 162.0650, 27.7380,
3.9140

■ 130.9130, 57.5850,
8.1530

■ 172.4490, 17.7890,
2.5010

■ 120.5290, 67.5340,
9.5660

■ 182.8330, 7.8400,
1.0880

■ 110.1450, 77.4830,
10.9790

■ 193.2170, -2.1090,
-0.3250

■ 99.7610, 87.4320,
12.3920

■ 203.7150,
-12.3790, -1.4270

■ 89.2630, 97.7020,
13.4940

■ 214.0990,
-22.3280, -2.8400

■ 86.4590, 100.0860,
14.3420

■ 225.0700,
-32.5520, -4.7760

■ 233.5160,
-37.0440, -11.4760

■ 235.8640,
-38.1440, -13.5680

Harmonies

Analogous

The Analogous color harmony consists of three colors that are next to each other on the color wheel.



153.1080, 35.3470, 14.6990



151.6810, 37.6870, 5.3270



149.9370, 30.6740, -5.2460

Triad

The Triadic color harmony groups three colors that are evenly spaced from another and form a triangle on the color wheel.



151.6810, 37.6870, 5.3270



141.6230, -27.4600, -19.9720



150.4390, -19.8090, 12.0870

Complementary

The Complementary color scheme is a pair of colors which are on the opposite of each other on the color wheel.



151.6810, 37.6870, 5.3270



158.3190, -37.6870, -5.3270

Split Complementary

Split-complementary colors differ from the complementary color scheme. The scheme consists of three colors, the original color and two neighbors of the complement color.



145.2680, -41.6770, 0.9070



151.6810, 37.6870, 5.3270



139.1510, -46.4420, -17.3700

Square

The Square scheme is like the rectangle color scheme, but the four colors are evenly spaced on the color wheel.



151.6810, 37.6870, 5.3270



144.7690, -4.4440, -18.5880



140.3710, -52.6330, -9.7930



153.1600, 3.2060, 18.9980

Rectangle

The Rectangle color scheme consists of four colors that form a rectangle on the color wheel.



151.6810, 37.6870, 5.3270



148.4580, 21.5970, -11.4510



140.3710, -52.6330, -9.7930



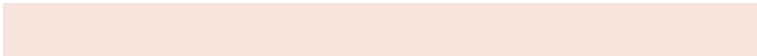
149.1390, -27.8320, 8.8080

Sweetspot

The Sweet Spot groups the original color and five complimentary colors.



151.6810, 37.6870, 5.3270



232.1820, 14.1670, 2.0630



146.6840, 25.5780, 32.0580



116.1320, 8.4360, 1.3000



252.0000, 0.0000, 0.0000



125.0000, 0.0000, 0.0000

Same Dimension

The Same Dimension uses a secret algorithm to generate beautiful new colors.



151.6810, 37.6870, 5.3270



186.2120, 58.1810, 8.3650



172.2260, 28.0620, -12.9780



88.8650, 4.8140, 0.8620



71.8960, 82.6180, 11.5300



13.9650, 16.2760, 2.3880

Inverse Universe

The Inverse Universe completely reimagines the original color for something new.



158.3190, -37.6870, -5.3270



196.7880, -58.1810, -8.3650



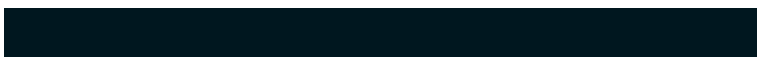
137.7740, -28.0620, 12.9780



90.1350, -4.8140, -0.8620



86.6910, -82.8930, -12.0530



17.0350, -16.2760, -2.3880

Previews

White Background



This preview shows how the YIQ color 151.6810, 37.6870, 5.3270 looks on a white background.

Color Contrast Check

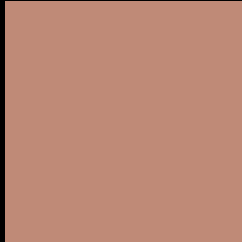
Large Text (above 18pt) WCAG AA × Fail

Any Text WCAG AA × Fail

Large Text (above 18pt) WCAG AAA × Fail

Any Text WCAG AAA × Fail

Black Background



This preview shows how the YIQ color 151.6810, 37.6870, 5.3270 looks on a black background.

Color Contrast Check

Large Text (above 18pt) WCAG AA ✓ Pass

Any Text WCAG AA ✓ Pass

Large Text (above 18pt) WCAG AAA ✓ Pass

Any Text WCAG AAA ✓ Pass

If you want to check with other color combinations, try the [Color Contrast Checker](#).

YIQ 151.6810, 37.6870, 5.3270

Background



This preview shows how black text looks on a background with the YIQ color 151.6810, 37.6870, 5.3270.



This preview shows how white text looks on a background with the YIQ color 151.6810, 37.6870,

Color Blindness Simulation

Color vision deficiency is a very complex topic, and I could not describe the different causes any better than Wikipedia does, so if you want to learn more, you should check out their [article about color blindness](#).

Dichromacy



Original Color

151.6810, 37.6870, 5.3270

Protanopia

149.8410, 13.3890, -5.8670

Deuteranopia

150.6040, 27.4180, -1.3020



Tritanopia

152.8950, 31.6330, 15.9290

Trichromacy



Original Color

151.6810, 37.6870, 5.3270

Protanomaly

150.8530, 22.2830, -1.8530

Deuteranomaly

150.9250, 30.9480, 0.8040

Tritanomaly

152.1570, 33.6510, 12.3950

Monochromacy



Original Color

151.6810, 37.6870, 5.3270

Achromatopsia

152.0000, -0.0000, -0.0000

Achromatomaly

151.8830, 13.5710, 1.8510

CSS Examples

Text

The CSS property to change the color of the text to YIQ 151.6810, 37.6870, 5.3270 is called "color". The color property can be set on classes, ids or directly on the HTML element.

This example shows how text in the color `rgb(191, 138, 119)` looks like.

```
.text, #text, p{  
    color:rgb(191, 138, 119)  
}
```

If you want to add a text shadow in that color use the text-shadow property, you can generate a text shadow directly with our [CSS Text Shadow Generator](#).

Here you see how black text with a 4 pixel rgb(191, 138, 119) colored shadow looks like.

```
.shadow{ text-shadow: 4px 4px 2px rgb(191, 138, 119) }
```

Border

The CSS property to change the border of an element to YIQ 151.6810, 37.6870, 5.3270 is called "border". The border property can be set on classes, ids or directly on the HTML element.

This example shows the color as border, it can be applied via the CSS property "border" or "border-color".

```
.border, #border, table{ border:4px solid rgb(191, 138, 119) }
```


If only the border color should be changed use the property `border-color`.

```
.border{ border-color:rgb(191, 138, 119) }
```

If you want to add a box shadow in that color use:

Here you see how a box with a 4 pixel `rgb(191, 138, 119)` colored shadow looks like.

```
.boxshadow{ -moz-box-shadow:4px 4px 4px  
4px rgb(191, 138, 119); -webkit-box-  
shadow:4px 4px 4px 4px rgb(191, 138, 119);  
box-shadow:4px 4px 4px 4px rgb(191, 138,  
119) }
```

Background

The CSS property to change the background color of an element to YIQ 151.6810, 37.6870, 5.3270 is called "background". The background property can be set on classes, ids or directly on the HTML element.

```
.background, #background, body{  
background: rgb(191, 138, 119) }
```

If only the background color should be changed can be used:

```
.background{ background-color: rgb(191,  
138, 119) }
```

This example shows the color as background, it is applied via the CSS property "background".

To optimize and compress your CSS code, you can use our [online CSS compressor and optimizer](#) based on csstidy. If you want to create a linear or radial gradient as background or border, check our [CSS Gradient Generator](#).

Hey! You found this booklet interesting? Support Converting Colors with the new Membership Option!

The pro membership hides all ads, plus gives you double the colors in the color bucket, and more awesome pro features!

[Learn more, Memberships starting at \\$2.50/m!](#)

**Follow me
on Twitter!**

@ConvertingColor